

WIND DATA REPORT

Yarmouth Water Dept.

August 2009 to August 2010

Prepared for

Massachusetts Clean Energy Center
55 Summer Street, 9th Floor
Boston, MA 02110

by

Daniel Finn-Foley
James F. Manwell
Utama Abdulwahid
Anthony F. Ellis

October 14, 2010

Report template version 1.7

Wind Energy Center
University of Massachusetts, Amherst
160 Governors Drive, Amherst, MA 01003
www.umass.edu/windenergy • (413) 545-4359 • rerl@ecs.umass.edu



NOTICE AND ACKNOWLEDGEMENTS

This report was prepared by the Wind Energy Center (WEC) at the University of Massachusetts, Amherst in the course of performing work sponsored by the Renewable Energy Trust (RET), as administered by the Massachusetts Clean Energy Center (MassCEC). The opinions expressed in this report do not necessarily reflect those of MTC or the Commonwealth of Massachusetts, and reference to any specific product, service, process, or method does not constitute an implied or expressed recommendation or endorsement of it.

Further, MassCEC, the Commonwealth of Massachusetts, and the Wind Energy Center make no warranties or representations, expressed or implied, as to the fitness for particular purpose or merchantability of any product, apparatus, or service, or the usefulness, completeness, or accuracy of any processes, methods or other information contained, described, disclosed, or referred to in this report. MassCEC, the Commonwealth of Massachusetts, and the Wind Energy Center make no representation that the use of any product, apparatus, process, method, or other information will not infringe privately owned rights and will assume no liability for any loss, injury, or damage directly or indirectly resulting from, or occurring in connection with, the use of information contained, described, disclosed, or referred to in this report.

TABLE OF CONTENTS

Notice and Acknowledgements	1
Table of Contents	2
Table of Figures	3
Executive Summary	4
SECTION 1 - Station Location	5
SECTION 2 - Instrumentation and Equipment	5
SECTION 3 - Data Summary	6
SECTION 4 - Long Term Estimate and Capacity Factor	8
SECTION 5 - Graphs	10
Wind Speed Time Series	11
Wind Speed Distributions	11
Monthly Average Wind Speeds	11
Diurnal Average Wind Speeds	12
Turbulence Intensities	12
Wind Roses	13
SECTION 6 - Significant Meteorological Events	13
SECTION 7 - Data Collection and Maintenance	13
SECTION 8 - Data Recovery and Validation	13
Test Definitions	14
Sensor Statistics	15
APPENDIX A - Sensor Performance Report	16
Test Definitions	16
Sensor Statistics	17
APPENDIX B - Plot Data	18
Wind Speed Distribution Data	18
Monthly Average Wind Speed Data	18
Diurnal Average Wind Speed Data	19
Wind Rose Data	20

TABLE OF FIGURES

Figure 1 – Site location	5
Figure 1 – Wind Speed Time Series, 49 m	11
Figure 2 – Wind Speed Distributions, 49 m, August 13 th , 2009 to August 12 th , 2010	11
Figure 3 – Monthly Average Wind Speeds, 49 m	11
Figure 4 – Diurnal Average Wind Speeds, 49 m, August 13 th , 2009 to August 12 th , 2010.....	12
Figure 5 – Turbulence Intensity, 49 m, August 13 th , 2009 to August 12 th , 2010	12
Figure 6 – Wind Rose, 49 m, August 13 th , 2009 to August 12 th , 2010.....	13

EXECUTIVE SUMMARY

All the work presented in this Wind Data Report including installation and decommissioning of the meteorological tower and instrumentation, and the data analysis and reporting was performed by the Wind Energy Center (WEC) at the University of Massachusetts, Amherst.

Wind monitoring equipment was installed at the Yarmouth Water Dept site in August 2009 and removed in August 2010. The base of the 50 meter meteorological tower was installed 5 meters above sea level. Anemometers were installed at heights of 38 and 49 meters (124.7 and 160.8 feet) above the tower base. Redundant anemometers were installed at both heights. A temperature sensor was installed near the base of the tower.

This report summarizes the wind data collected for the whole period. Annual statistics are calculated for the period between August 13, 2009 and August 12, 2010. The mean recorded wind speed was 5.47 m/s (12.2 mph*) at 49 meters, and the prevailing wind direction was from the Southwest. The average wind shear component was 0.38 and the average turbulence intensity at 49 meters was 0.21.

The gross data recovery percentage (the actual percentage of expected data received) was 100% and the net data recovery percentage (the percentage of expected data which passed all of the quality assurance tests) was 99.21 %.

Additional information about interpreting the data presented in this report can be found in the Fact Sheet, "Interpreting Your Wind Resource Data", produced by WEC and the Massachusetts Technology Collaborative (now known as Massachusetts Clean Energy Center (MassCEC)). This document is found through the WEC website:

http://www.ceere.org/rerl/about_wind/RERL_Fact_Sheet_6_Wind_resource_interpretation.pdf

* 1 m/s = 2.237 mph.

SECTION 1 - Station Location

The tower is located on a field adjacent to the Water Department of Yarmouth Massachusetts with the coordinates of 41.66215° N, 70.22458° W. The location is marked by a white square in Figure 1. The tower is immediately surrounded mainly by open fields and a single story Water Department facility.



Figure 1 – Site location

SECTION 2- Instrumentation and Equipment

The wind monitoring equipment is mounted on a 50 m (164 ft) meteorological tower. The wind monitoring equipment comes from NRG systems and consists of the following items:

- NRG Symphonie data logger
- 4 – NRG #40 Anemometers, standard calibration (Slope – 0.765 m/s, Offset – 0.350 m/s). Two anemometers are located at 49 m (160.8 ft), and two anemometers are located at 38 m (124.7 ft).
- 2 – NRG #200P Wind direction vanes. The vanes are located at 49 m (160.8 ft) and 38 m (124.7 ft).
- NRG 110S temperature Sensor located near the base of the tower.

The logger samples wind speed and direction once every two second. These samples are combined into 10-minute averages and are put into a binary file along with the maximum, minimum and standard deviation for each 10-minute interval. The binary data file from the Symphonie logger is sent to RERL via a cellular modem daily. These files are converted to ASCII text files using NRG software. The text files are then imported into a database software program where they are subjected to quality assurance tests prior to data usage.

SECTION 3 - Data Summary

A summary of the wind speeds and wind directions measured during the reporting period is included in Table 1. Table 1 includes the mean wind speeds measured at each measurement height, the maximum instantaneous wind speed measured at each measurement height and the prevailing wind direction measured at each measurement height. These values are provided for each month of the reporting period and for the whole reporting period.

Table 1. Wind Speed and Direction Data Summary

Date	Mean Wind Speed	Max Wind Speed	Prevailing Wind Direction	Mean Wind Speed	Max Wind Speed	Prevailing Wind Direction
Height Units	49 m [m/s]	49m [m/s]	49m [m/s]	38 m [m/s]	38 m [m/s]	38 m [m/s]
Sep 2009	4.84	12.09	WSW	4.41	11.46	WSW
Oct 2009	5.78	15.37	NNE	5.17	13.97	NE
Nov 2009	5.79	13.11	NE	5.23	12.06	NE
Dec 2009	6.43	16.98	NW	5.80	15.4	NW
Jan 2010	5.71	18.81	WNW	5.15	17.29	WNW
Feb 2010	5.78	16.4	NW	5.28	15.05	WNW
Mar 2010	6.65	17.87	E	5.99	16.47	NNE
Apr 2010	5.12	12.99	SW	4.65	11.86	SW
May 2010	5.12	13.79	SW	4.66	12.44	SW
Jun 2010	4.97	11.43	SW	4.56	10.71	SW
Jul 2010	4.62	11.49	SW	4.24	10.55	SW
Aug 2009 -Aug 2010	5.47	18.81	SW	4.97	17.29	SW

Wind data statistics in the table are reported when more than 90% of the data during the reporting period are valid. In cases when a larger amount of data are missing, the percent of the available data that are used to determine the data statistics is noted.

No measurement of wind speed or direction can be perfectly accurate. Wind speed measurement errors occur due to anemometer manufacturing variability, anemometer calibration errors, the response of anemometers to turbulence and vertical air flow and due to air flows caused by the anemometer mounting system. Every effort is made to reduce the sources of these errors. Nevertheless, the values reported in this report have an expected uncertainty of about $\pm 2\%$ or ± 0.2 m/s, whichever is greater. Wind direction measurement errors occur due to sensor measurement uncertainty, tower effects, boom alignment measurement errors and twisting of pipe sections during the raising of a pipe tower. Efforts are also made to reduce these errors, but the reported wind directions are estimated to have an uncertainty of ± 5 degrees.

A summary of the turbulence intensity and mean wind shear measured at each measurement height during the reporting period is included in Table 2. These values are provided for each month of the reporting period and for the whole reporting period. Turbulence Intensity is calculated by dividing the standard deviation of the wind speed by the mean wind speed and is a measure of the gustiness of a wind resource. Lower turbulence results in lower mechanical loads on a wind turbine. Turbulence intensity varies with wind speed. The average turbulence intensity presented in Table 2 is the mean turbulence intensity when the wind speed at the highest measurement height is between 9.5 and 10.5 m/s.

Shear coefficients provide a measure of the change in wind speed with height. When data at multiple heights are available, shear coefficients, α , have been determined. They can be used in the following formula to estimate the average wind speed, $U(z)$, at height z , when the average wind speed, $U(z_r)$, at height z_r is known:

$$U(z) = U(z_r) \left(\frac{z}{z_r} \right)^\alpha$$

The change in wind speed with height is a very complicated relationship related to atmospheric conditions, wind speed, wind direction, time of day and time of year. This formula will not always provide the correct answer at any given site. Nevertheless the calculated shear coefficient, based on measurements at two heights, can be used to characterize the degree of increase in wind speed with height at a site.

The mean wind shear coefficient that is provided here is calculated based on the mean wind speeds in Table 1, where z_{high} and z_{low} are the heights of the higher and lower mean wind speeds used in the calculation and $U(z_{low})$ and $U(z_{high})$ are the mean wind speeds at the two heights.

$$\alpha = \log \left(\frac{U(z_{high})}{U(z_{low})} \right) / \log \left(\frac{z_{high}}{z_{low}} \right)$$

Table 2. Shear and Turbulence Intensity Data Summary

Date	Turbulence Intensity at 10 m/s	Turbulence Intensity at 10 m/s	Mean Wind Shear Coefficient, α
Height Units	49 m [-]	38 m [-]	Between 50 m and 40 m [-]
Sep 2009	0.20	0.22	0.37
Oct 2009	0.21	0.22	0.44
Nov 2009	0.21	0.24	0.4
Dec 2009	0.21	0.24	0.41
Jan 2010	0.22	0.24	0.4
Feb 2010	0.21	0.23	0.35
Mar 2010	0.20	0.24	0.41
Apr 2010	0.21	0.24	0.37
May 2010	0.21	0.20	0.37
Jun 2010	0.18	0.22	0.34
Jul 2010	0.19	0.21	0.34
Aug 2009 - Aug 2010	0.21	0.23	0.38

The annual statistics shown in Tables 1 and 2 are calculated from data between August 13th, 2009 to August 12th, 2010.

SECTION 4- Long Term Estimate and Capacity Factor

Wind speed varies year by year and the mean obtained over the measurement period may be less or more compared to what is seen over a longer time period. Therefore, the use of the long term mean at the site is preferred when projecting the performance of a wind turbine. The long term mean at a site may be estimated by using the Measure-Correlate-Predict (MCP) method.

The MCP method correlates wind speed measurements at the target site to a reference site which collects data over the same period of time and has been collecting data for a much longer period. Based on this correlation, the reference wind speed data is used to predict long term mean at the site.

Long term data from the NOAA buoy BUZM3 between January 15th, 1998 and January 15th, 2010 is used as reference in the case of Yarmouth. Correlation between the two sites are obtained from concurrent data between August 12th, 2009 and

August 20th, 2010. The long term mean at Yarmouth at 50 m is estimated to be 5.6 m/s with an uncertainty of 5.8 % for the MCP process. This estimate may also be used to calculate the long term mean at different heights by using the mean wind shear at site and the equation described in the previous section. The long term mean wind speed at 70 m height is estimated at 6.4 m/s.

The capacity factor of a wind turbine at a given site depends on the hub height, wind speed distribution at the hub height, the wind turbine power curve and any assumptions about down time and losses due to wake effects from upwind wind turbines, etc. If the hub height wind speed is estimated from data at lower heights, then the capacity factor will also depend on the estimated wind shear and the wind speeds measured at lower heights. No simple estimate of capacity factor at a site could take all of these effects and choices into account. Nevertheless, an estimate of the capacity factor of a wind turbine at this site is provided here to help the reader understand the order of magnitude of the wind resource at this site.

The estimates assume a GE 1.5 sl turbine with a hub height of 80 m and the long term mean wind speed estimate at the highest measurement height and the mean wind shear at the site, in order to determine the mean hub height wind speed, in this case 6.7 m/s. The wind speed probability distribution is assumed to be given by a Rayleigh distribution. The average wind turbine power is then estimated from:

$$\overline{P_w} = \int_0^{\infty} P_w(U) p(U) dU$$

where $P_w(U)$ is the wind turbine power curve and $p(U)$ is the wind speed probability distribution. The capacity factor is then calculated from:

$$CF = \frac{\overline{P_w}}{P_{rated}}$$

where P_{rated} is the rated capacity of the turbine, i.e., 1500 kW. Based on this equation, the estimated capacity factor of a wind turbine at this site would be about 0.34.

SECTION 5- Graphs

This report contains several types of wind data graphs. Unless otherwise noted, each graph represents data from one calendar year (August 13th, 2009 to August 12th, 2010). The following graphs are included:

- Time Series – 10-minute average wind speeds are plotted against time. This graph includes all of the collected data. [Add to this section and others below a description of what is in the graph]
- Wind Speed Distribution – A histogram plot giving the percentage of time that the wind is at a given wind speed. Figure 3 shows that more than 70 % of the wind is higher than 4 m/s.
- Monthly Average – A plot of the monthly average wind speed over a 12-month period. Figure 4 shows the trends in the wind speed over the whole period of data collection and the lowest average wind speeds occur in the summer months.
- Diurnal – A plot of the average wind speed for each hour of the day. There is a slight increase in wind speed in the middle of the day as shown in Figure 5.
- Turbulence Intensity – A plot of turbulence intensity as a function of wind speed. Turbulence Intensity is calculated as the standard deviation of the wind speed divided by the wind speed and is a measure of the gustiness of a wind resource. Lower turbulence results in lower mechanical loads on a wind turbine.
- Wind Rose – A plot, by compass direction showing the percentage of time that the wind comes from a given direction and the average wind speed in that direction. Over the year, the wind came primarily from the southwest direction.

Data for the wind speed histograms, monthly and diurnal average plots, and wind roses are included in APPENDIX B.

Wind Speed Time Series

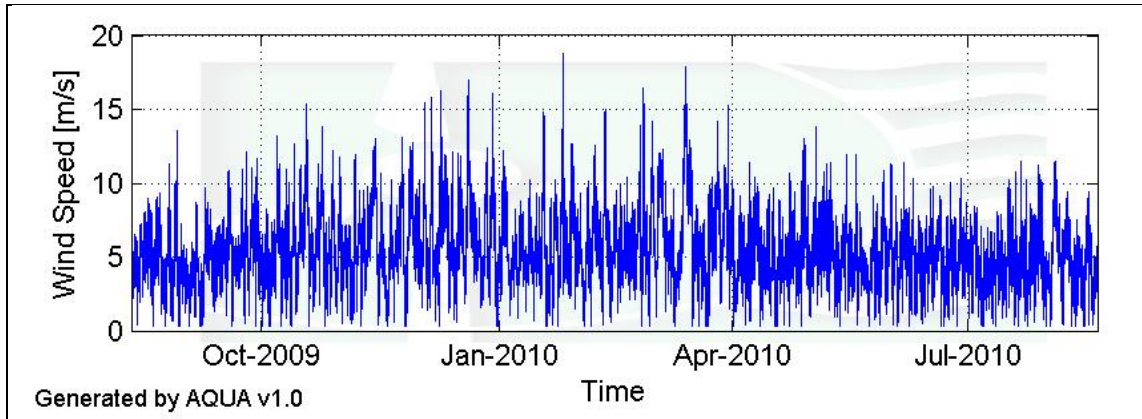


Figure 2 – Wind Speed Time Series, 49 m

Wind Speed Distributions

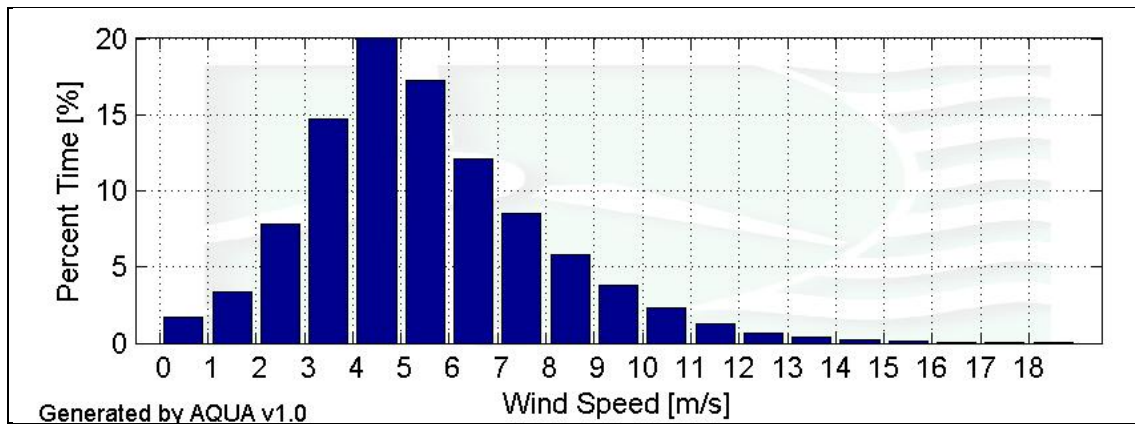


Figure 3 – Wind Speed Distributions, 49 m, August 13th, 2009 to August 12th, 2010

Monthly Average Wind Speeds

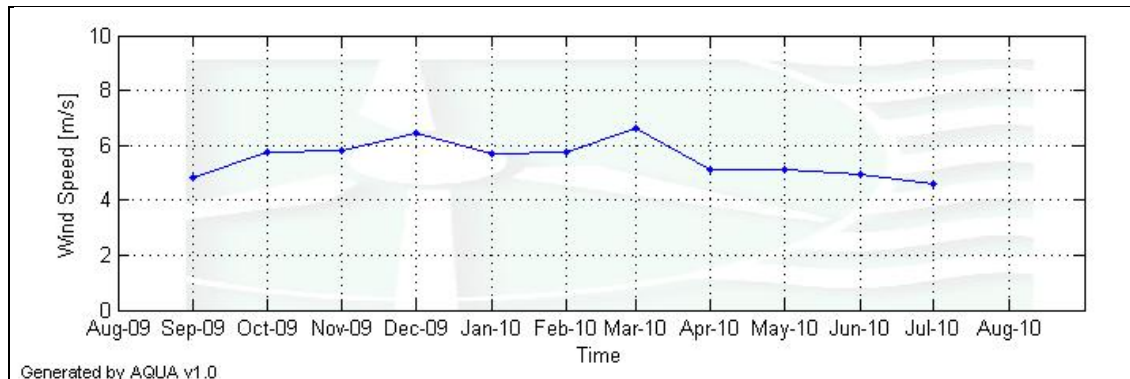


Figure 4 – Monthly Average Wind Speeds, 49 m

Diurnal Average Wind Speeds

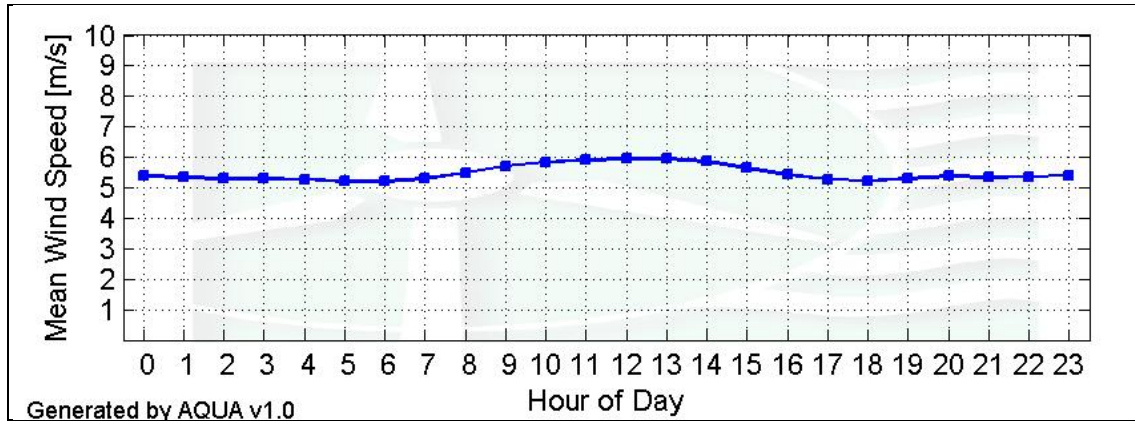


Figure 5 – Diurnal Average Wind Speeds, 49 m, August 13th, 2009 to August 12th, 2010

Turbulence Intensities

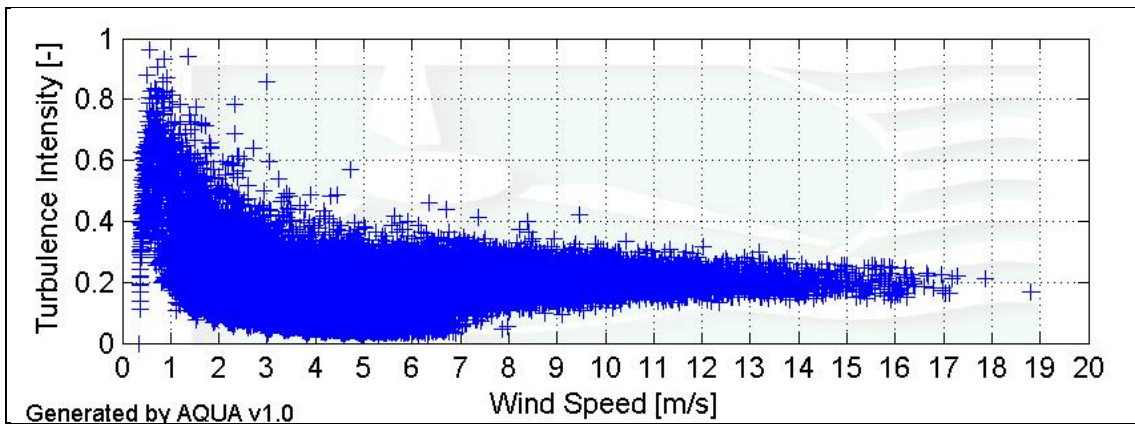


Figure 6 – Turbulence Intensity, 49 m, August 13th, 2009 to August 12th, 2010

Wind Roses

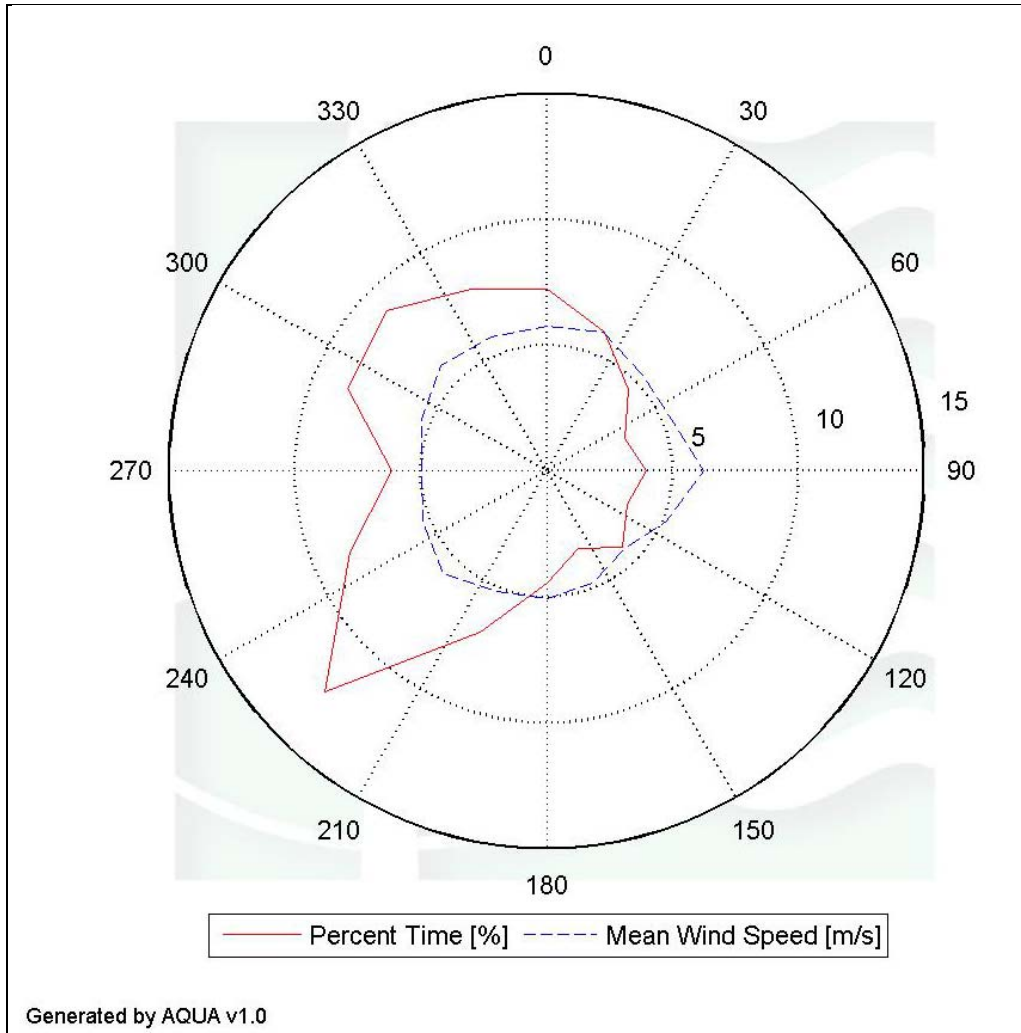


Figure 7 – Wind Rose, 49 m, August 13th, 2009 to August 12th, 2010

SECTION 6 - Significant Meteorological Events

No significant meteorological events took place over the recorded period.

SECTION 7 - Data Collection and Maintenance

No data collection or maintenance problems were encountered.

SECTION 8 - Data Recovery and Validation

All raw wind data are subjected to a series of tests and filters to weed out data that are faulty or corrupted. Definitions of these quality assurance (QA) controls are given below

under Test Definitions and Sensor Statistics. These control filters were designed to automate the quality control process and used many of the previous hand-worked data sets made at UMass to affect a suitable emulation. The gross percentage of data recovered (ratio of the number of raw data points received to data points expected) and net percentage (ratio of raw data points which passed all QA control tests to data points expected) are shown below. [Statistics over whole period of data collection].

Gross Data Recovered [%]	100
Net Data Recovered [%]	99.21

Test Definitions

All raw data were subjected to a series of validation tests, as described below. The sensors tested and the parameters specific to each sensor are given in the Sensor Performance Report which is included in APPENDIX A. Data which were flagged as invalid were not included in the statistics presented in this report.

MinMax Test: All sensors are expected to report data values within a range specified by the sensor and logger manufacturers. If a value falls outside this range, it is flagged as invalid. A data value from the sensor listed in Test Field 1 (TF1) is flagged if it is less than Factor 1 (F1) or greater than Factor 2. This test has been applied to the following sensors (as applicable): wind speed, wind speed standard deviation, wind direction, temperature, and solar insolation.

$$F1 > TF1 > F2$$

MinMaxT Test: This is a MinMax test for wind direction standard deviation with different ranges applied for high and low wind speeds. A wind direction standard deviation data value (TF1) is flagged either if it is less than Factor 1, if the wind speed (TF2) is less than Factor 4 and the wind direction standard deviation is greater than Factor 2, or if the wind speed is greater than or equal to Factor 4 and the wind direction standard deviation is greater than Factor 3.

$$\begin{aligned} & (TF1 < F1) \\ & \text{or } (TF2 < F4 \text{ and } TF1 > F2) \\ & \text{or } (TF2 \geq F4 \text{ and } TF1 > F3) \end{aligned}$$

Icing Test: An icing event occurs when ice collects on a sensor and degrades its performance. Icing events are characterized by the simultaneous measurements of near-zero standard deviation of wind direction, non-zero wind speed, and near- or below-freezing temperatures. Wind speed, wind speed standard deviation, wind direction, and wind direction standard deviation data values are flagged if the wind direction standard deviation (CF1) is less than or equal to Factor 1 (F1), the wind speed (TF1) is greater

than Factor 2 (F2), and the temperature (CF2) is less than Factor 3 (F3). To exit an icing event, the wind direction standard deviation must be greater than Factor 4.

$$CF1 \leq F1 \text{ and } TF1 > F2 \text{ and } CF2 < F3$$

CompareSensors Test: Where primary and redundant sensors are used, it is possible to determine when one of the sensors is not performing properly. For anemometers, poor performance is characterized by low data values. Therefore, if one sensor of the pair reports values significantly below the other, the low values are flagged. At low wind speeds (Test Fields 1 and 2 less than or equal to Factor 3) wind speed data are flagged if the absolute difference between the two wind speeds is greater than Factor 1. At high wind speeds (Test Fields 1 or 2 greater than Factor 3) wind speed data are flagged if the absolute value of the ratio of the two wind speeds is greater is greater than Factor 2.

$$\begin{aligned} & [TF1 \leq F3 \text{ and } TF2 \leq F3 \text{ and } \text{abs}(TF1 - TF2) > F1] \\ \text{or } & [(TF1 > F3 \text{ or } TF2 > F3) \text{ and } (\text{abs}(1 - TF1 / TF2) > F2 \text{ or } \text{abs}(1 - TF2 / TF1) > F2)] \end{aligned}$$

Sensor Statistics

A summary of the results of the data collection and filtering are given in the Sensor Performance Report which is included in APPENDIX A. The following categories of information, tabulated for each sensor, are included in that report.

Expected Data Points: the total number of sample intervals between the start and end dates (inclusive).

Actual Data Points: the total number of data points recorded between the start and end dates.

% Data Recovered: the ratio of actual and expected data points (this is the *gross data recovered percentage*).

Hours Out of Range: total number of hours for which data were flagged according to MinMax and MinMaxT tests. These tests flag data which fall outside of an expected range.

Hours of Icing: total number of hours for which data were flagged according to Icing tests. This test uses the standard deviation of wind direction, air temperature, and wind speed to determine when sensor icing has occurred.

Hours of Fault: total number of hours for which data were flagged according to CompareSensors tests. These tests compare two sensors (e.g. primary and redundant anemometers installed at the same height) and flag data points where one sensor differs significantly from the other.

% Data Good: the filter results are subtracted from the gross data recovery percentage to yield the *net data recovered percentage*.

APPENDIX A - Sensor Performance Report

Test Definitions

Test Order	Test Field 1	Test Field 2	Test Field 3	Calc Field 1	Calc Field 2	Test Type	Factor 1	Factor 2	Factor 3	Factor 4
1						TimeTest Insert	0	0	0	0
3	Batt2aVDC					MinMax	10.5	15	0	0
4	Etmp2aDEGC					MinMax	-30	60	0	0
5	EtmpSD2a DEGC					MinMax	-30	60	0	0
10	Anem49aMS					MinMax	0	90	0	0
11	Anem49bMS					MinMax	0	90	0	0
12	Anem38aMS					MinMax	0	90	0	0
13	Anem38bMS					MinMax	0	90	0	0
14	Anem49yMS					MinMax	0	90	0	0
20	AnemSD49aMS					MinMax	0	4	0	0
21	AnemSD49bMS					MinMax	0	4	0	0
22	AnemSD38aMS					MinMax	0	4	0	0
23	AnemSD38bMS					MinMax	0	4	0	0
24	AnemSD49yMS					MinMax	0	4	0	0
30	Vane49aDEG					MinMax	0	359.9	0	0
31	Vane38aDEG					MinMax	0	359.9	0	0
50	Turb49zNONE					MinMax	0	2	0	0
51	Turb38zNONE					MinMax	0	2	0	0
200	VaneSD49a DEG	Anem49yMS				MinMaxT	0	100	100	10
201	VaneSD38a DEG	Anem38yMS				MinMaxT	0	100	100	10
300	Anem49aMS	AnemSD49a MS	Vane49a DEG	VaneSD49aDEG	Etmp2aDEGC	Icing	0.5	1	2	4
301	Anem49bMS	AnemSD49b MS	Vane49a DEG	VaneSD49aDEG	Etmp2aDEGC	Icing	0.5	1	2	4
302	Anem38aMS	AnemSD38a MS	Vane38a DEG	VaneSD38aDEG	Etmp2aDEGC	Icing	0.5	1	2	4
303	Anem38bMS	AnemSD38a MS	Vane38a DEG	VaneSD38aDEG	Etmp2aDEGC	Icing	0.5	1	2	4
400	Anem49aMS	Anem49bMS				Compare Sensors	1	0.25	3	0
401	Anem38aMS	Anem38bMS				Compare Sensors	1	0.25	3	0
500	Amax49aMS					MinMax	0	90	0	0
501	Amax49bMS					MinMax	0	90	0	0
502	Amax38aMS					MinMax	0	90	0	0
503	Amax38bMS					MinMax	0	90	0	0
504	Amin49aMS					MinMax	0	90	0	0
505	Amin49bMS					MinMax	0	90	0	0
506	Amin38aMS					MinMax	0	90	0	0
507	Amin38bMS					MinMax	0	90	0	0
510	Vmax49aDEG					MinMax	0	359.9	0	0
511	Vmax38aDEG					MinMax	0	359.9	0	0
512	Vmin49aDEG					MinMax	0	359.9	0	0
513	Vmin38aDEG					MinMax	0	359.9	0	0
520	Etmpmax2aDEGC					MinMax	-30	60	0	0
521	Etmpmin2aDEGC					MinMax	-30	60	0	0

Sensor Statistics

	Expected Data Points	Actual Data Points	% Data Recovered	Hours Out of Range	Hours of Icing	Hours of Fault	%Data Good
Batt 10	53766	53766	100	0	0	0	100
Temp	53766	53766	100	10.5	0	0	99.88
Anem 38	53766	53766	100	2.5	68	13.833	99.06
Anem 38	53766	53766	100	1	80	14.167	98.94
Vane 38	53766	53766	100	0.83	80	0	99.10
Anem 49	53766	53766	100	2.67	47	27.333	99.16
Anem 49	53766	53766	100	1.67	52.67	115.5	98.13
Vane 49	53766	53766	100	1	52.67	0	99.40
Total	430128	430128	100	20.17	380.33	170.83	99.21

APPENDIX B - Plot Data

Wind Speed Distribution Data

Bin Center [m/s]	Percent Time [%]
0.5	1.78
1.5	3.28
2.5	7.79
3.5	14.72
4.5	19.99
5.5	17.25
6.5	12.07
7.5	8.53
8.5	5.79
9.5	3.78
10.5	2.27
11.5	1.23
12.5	0.66
13.5	0.43
14.5	0.26
15.5	0.11
16.5	0.06
17.5	0.01
18.5	0

Monthly Average Wind Speed Data

Month	Mean Wind Speed [m/s]
Sep-09	4.84
Oct-09	5.78
Nov-09	5.79
Dec-09	6.43
Jan-10	5.71
Feb-10	5.78
Mar-10	6.65
Apr-10	5.12
May-10	5.12
Jun-10	4.56
Jul-10	4.24

Diurnal Average Wind Speed Data

Hour of Day	Mean Wind Speed [m/s]
0	5.37
1	5.34
2	5.3
3	5.29
4	5.26
5	5.2
6	5.21
7	5.3
8	5.49
9	5.7
10	5.83
11	5.9
12	5.95
13	5.95
14	5.85
15	5.65
16	5.43
17	5.27
18	5.22
19	5.3
20	5.37
21	5.35
22	5.37
23	5.4

Wind Rose Data

Bin Center [deg]	Percent Time [%]	Mean Wind Speed [m/s]
0	7.23	5.77
22.5	5.95	5.97
45	4.58	5.4
67.5	3.39	5.36
90	4.07	6.06
112.5	3.38	5.18
135	4.25	4.39
157.5	3.32	4.84
180	4.48	5.06
202.5	6.93	5.18
225	12.45	5.79
247.5	8.44	5.34
270	6.15	4.96
292.5	8.56	5.35
315	8.98	5.94
337.5	7.84	5.75