

WIND DATA REPORT

Worcester County Jail West Boylston, MA

June 2009 to August 2009

Prepared for

Massachusetts Division of Capital Asset Management
One Ashburton Place, 15th Floor
Boston, MA 02108

by

James F. Manwell
Utama Abdulwahid
Anthony F. Ellis

January 8, 2010

Report template version 3.1.2

Renewable Energy Research Laboratory
University of Massachusetts, Amherst
160 Governors Drive, Amherst, MA 01003

www.ceere.org/rerl • (413) 545-4359 • rerl@ecs.umass.edu



NOTICE AND ACKNOWLEDGEMENTS

This report was prepared by the Renewable Energy Research Laboratory (RERL) at the University of Massachusetts, Amherst in the course of performing work sponsored by the Massachusetts Division of Capital Asset Management. The opinions expressed in this report do not necessarily reflect those of the Commonwealth of Massachusetts, and reference to any specific product, service, process, or method does not constitute an implied or expressed recommendation or endorsement of it.

Further, the Commonwealth of Massachusetts, and RERL make no warranties or representations, expressed or implied, as to the fitness for particular purpose or merchantability of any product, apparatus, or service, or the usefulness, completeness, or accuracy of any processes, methods or other information contained, described, disclosed, or referred to in this report. The Commonwealth of Massachusetts, and the contractor make no representation that the use of any product, apparatus, process, method, or other information will not infringe privately owned rights and will assume no liability for any loss, injury, or damage directly or indirectly resulting from, or occurring in connection with, the use of information contained, described, disclosed, or referred to in this report.

TABLE OF CONTENTS

| | |
|---|----|
| Notice and Acknowledgements | 1 |
| Table of Contents | 2 |
| Table of Figures | 3 |
| Executive Summary | 4 |
| SECTION 1 - Station Location | 5 |
| SECTION 2 - Instrumentation and Equipment | 6 |
| SECTION 3 - Data Summary | 7 |
| SECTION 4 - Graphs | 9 |
| Wind Speed Time Series | 10 |
| Wind Speed Distributions | 10 |
| Monthly Average Wind Speeds | 10 |
| Diurnal Average Wind Speeds | 11 |
| Turbulence Intensities | 11 |
| Wind Roses | 12 |
| SECTION 5 - Significant Meteorological Events | 13 |
| SECTION 6 - Data Collection and Maintenance | 13 |
| SECTION 7 - Data Recovery and Validation | 13 |
| Test Definitions | 13 |
| Sensor Statistics | 14 |
| APPENDIX A - Sensor Performance Report | 16 |
| Test Definitions | 16 |
| Sensor Statistics | 17 |
| APPENDIX B - Plot Data | 18 |
| Wind Speed Distribution Data | 18 |
| Monthly Average Wind Speed Data | 18 |
| Diurnal Average Wind Speed Data | 19 |
| Wind Rose Data | 19 |

TABLE OF FIGURES

| | |
|--|----|
| Figure 1 – Wind Speed Time Series, June 1 – August 31, 2009 | 10 |
| Figure 2 – Wind Speed Distribution, June 1 – August 31, 2009 | 10 |
| Figure 3 - Monthly Average Wind Speed, February 2009 – August 2009..... | 10 |
| Figure 4 - Diurnal Average Wind Speeds, June 1 – August 31, 2009..... | 11 |
| Figure 5 - Turbulence Intensity vs. Wind Speed, June 1 – August 31, 2009 | 11 |
| Figure 6 - Wind Rose, June 1– August 31, 2009 | 12 |

EXECUTIVE SUMMARY

All the work presented in this Wind Data Report including installation and decommissioning of the meteorological tower and instrumentation, and the data analysis and reporting was performed by the Renewable Energy Research Laboratory (RERL) at the University of Massachusetts, Amherst.

Wind monitoring equipment was installed on a 50 m tower at the Worcester County Jail grounds in West Boylston, Massachusetts on January 27th 2009. This is the second quarterly wind data report written subsequent to the special monthly update for February 2009.

At 49 m, the mean recorded wind speed was 3.81 m/s (8.53 mph)* and the prevailing wind direction was from the S. The average wind shear power-law factor is 0.55, and is calculated from data from the 49 m and 38 m anemometers. The average turbulence intensity at 49 m for wind speeds between 10 m/s and 11 m/s was 0.2, well within the normal values recorded by the RERL at wind monitoring sites it maintains in Massachusetts.

The gross data recovery percentage (the actual percentage of expected data received) was 100% and the net data recovery percentage (the percentage of expected data which passed all of the quality assurance tests) was 99.97%.

Additional information about interpreting the data presented in this report can be found in the Fact Sheet, "Interpreting Your Wind Resource Data," produced by RERL and the Massachusetts Technology Collaborative (MTC). This document is found through the RERL website:

http://www.ceere.org/rerl/about_wind/RERL_Fact_Sheet_6_Wind_resource_interpretation.pdf

* 1 m/s = 2.237 mph.

SECTION 1 - Station Location

The 50 m met tower is located in an open field within the grounds of the Worcester County Jail and House of Correction grounds in West Boylston. It's coordinates are 42° 19' 11.40" N, 71° 45' 55.56" W and marked with the white square in Figure 1.

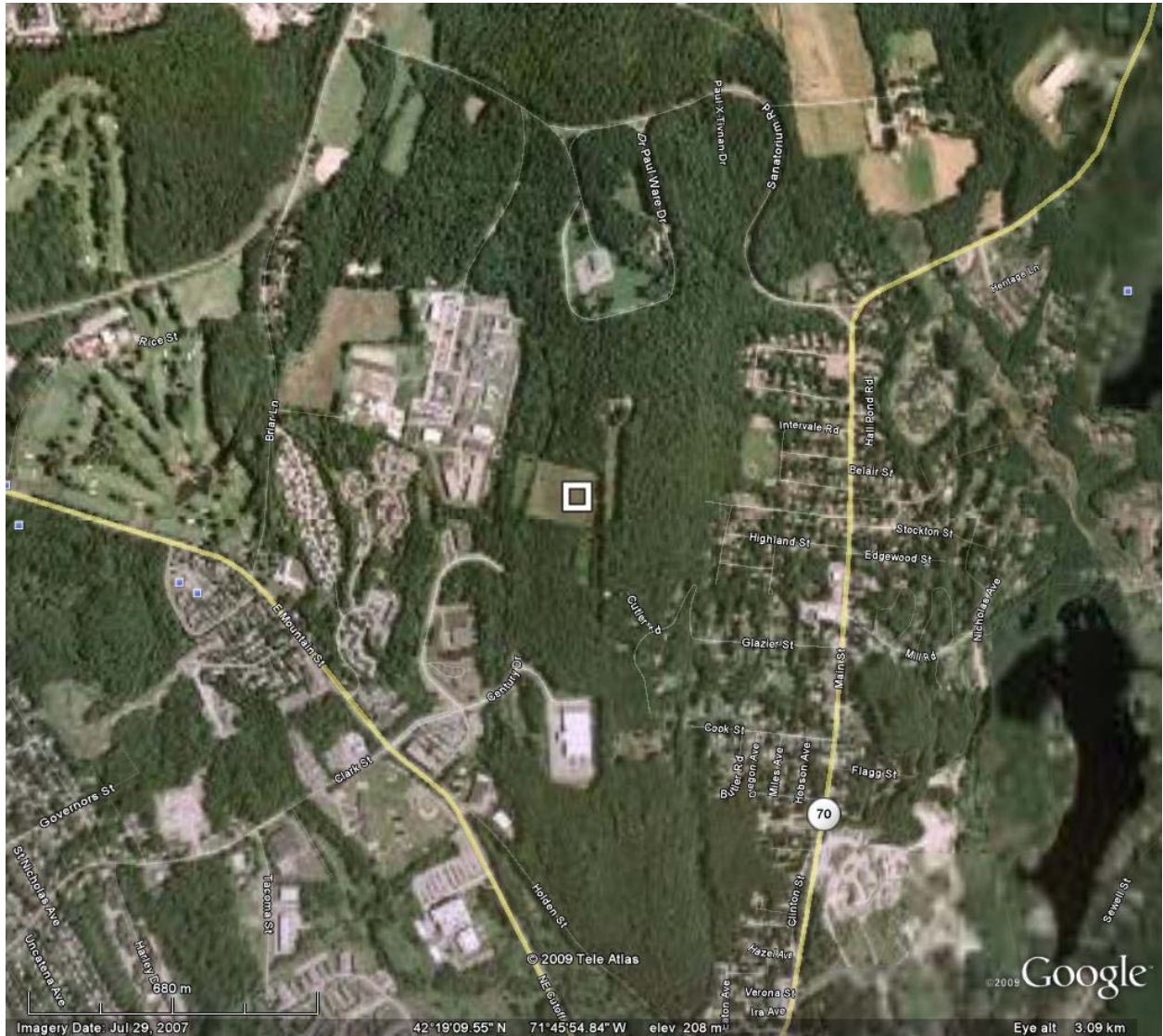


Figure 1 – Site Location

SECTION 2 - Instrumentation and Equipment

The wind monitoring equipment is mounted on a 50 m (164 ft) meteorological tower. The wind monitoring equipment comes from NRG systems and consists of the following items:

- NRG Symphonie data logger
- 4 – NRG #40 Anemometers, standard calibration (Slope – 0.765 m/s, Offset – 0.350 m/s). Two anemometers are located at 49 m (160.8 ft), and two anemometers are located at 38 m (124.7 ft).
- 2 – NRG #200P Wind direction vanes. The vanes are located at 49 m (160.8 ft) and 38 m (124.7 ft).
- NRG 110S temperature Sensor located near the base of the tower.

The logger samples wind speed and direction once every two second. These samples are combined into 10-minute averages and are put into a binary file along with the maximum, minimum and standard deviation for each 10-minute interval. The binary data file from the Symphonie logger is sent to RERL via a cellular modem daily. These files are converted to ASCII text files using NRG software. The text files are then imported into a database software program where they are subjected to quality assurance tests prior to data usage.

SECTION 3- Data Summary

A summary of the wind speeds and wind directions measured during the reporting period is included in Table 1. Table 1 includes the mean wind speeds measured at each measurement height, the maximum instantaneous wind speed measured at each measurement height and the prevailing wind direction measured at each measurement height. These values are provided for each month of the reporting period and for the whole reporting period.

Table 1. Wind Speed and Direction Data Summary

| Date | Mean Wind Speed | Max Wind Speed | Prevailing Wind Direction | Mean Wind Speed | Max Wind Speed | Prevailing Wind Direction |
|----------------------------|-----------------|----------------|---------------------------|-----------------|----------------|---------------------------|
| Height Units | 49 m [m/s] | 49 m [m/s] | 49 m [m/s] | 38 m [m/s] | 38 m [m/s] | 38 m [m/s] |
| Jun 2009 | 3.45 | 9.0 | NNW 337.5 | 2.97 | 8.5 | NNE 22.5 |
| Jul 2009 | 4.12 | 11.0 | WSW 247.5 | 3.61 | 10.6 | W 270 |
| Aug 2009 | 3.85 | 12.5 | S 180 | 3.35 | 11.4 | SW 225 |
| Jun 2009 – Aug 2009 | 3.81 | 12.5 | S 180 | 3.31 | 11.4 | W 270 |

Wind data statistics in the table are reported when more than 90% of the data during the reporting period are valid. In cases when a larger amount of data are missing, the percent of the available data that are used to determine the data statistics is noted.

No measurement of wind speed or direction can be perfectly accurate. Wind speed measurement errors occur due to anemometer manufacturing variability, anemometer calibration errors, the response of anemometers to turbulence and vertical air flow and due to air flows caused by the anemometer mounting system. Every effort is made to reduce the sources of these errors. Nevertheless, the values reported in this report have an expected uncertainty of about $\pm 2\%$ or ± 0.2 m/s, whichever is greater. Wind direction measurement errors occur due to sensor measurement uncertainty, tower effects, boom alignment measurement errors and twisting of pipe sections during the raising of a pipe tower. Efforts are also made to reduce these errors, but the reported wind directions are estimated to have an uncertainty of ± 5 degrees.

A summary of the turbulence intensity and mean wind shear measured at each measurement height during the reporting period is included in Table 2. These values are provided for each month of the reporting period and for the whole reporting period.

Turbulence Intensity is calculated by dividing the standard deviation of the wind speed by the mean wind speed and is a measure of the gustiness of a wind resource. Lower turbulence results in lower mechanical loads on a wind turbine. Turbulence intensity varies with wind speed. The average turbulence intensity presented in Table 2 is the mean turbulence intensity when the wind speed at each measurement height is between 10 and 11 m/s.

Shear coefficients provide a measure of the change in wind speed with height. When data at multiple heights are available, shear coefficients, α , have been determined. They can be used in the following formula to estimate the average wind speed, $U(z)$, at height z , when the average wind speed, $U(z_r)$, at height z_r is known:

$$U(z) = U(z_r) \left(\frac{z}{z_r} \right)^\alpha$$

The change in wind speed with height is a very complicated relationship related to atmospheric conditions, wind speed, wind direction, time of day and time of year. This formula will not always provide the correct answer at any given site. Nevertheless the calculated shear coefficient, based on measurements at two heights, can be used to characterize the degree of increase in wind speed with height at a site.

The mean wind shear coefficient that is provided here is calculated based on the mean wind speeds in Table 1, where z_{high} and z_{low} are the heights of the higher and lower mean wind speeds used in the calculation and $U(z_{low})$ and $U(z_{high})$ are the mean wind speeds at the two heights.

$$\alpha = \log \left(\frac{U(z_{high})}{U(z_{low})} \right) / \log \left(\frac{z_{high}}{z_{low}} \right)$$

Table 2. Shear and Turbulence Intensity Data Summary

| Date | Turbulence Intensity at 10 m/s | Turbulence Intensity at 10 m/s | Mean Wind Shear Coefficient, α |
|----------------------------|--------------------------------|--------------------------------|---------------------------------------|
| Height Units | 49 m [-] | 38 m [-] | Between 49 m and 38 m [-] |
| Jun 2009 | - | - | 0.59 |
| Jul 2009 | 0.19 | 0.2 | 0.52 |
| Aug 2009 | 0.22 | 0.29 | 0.55 |
| Jun 2009 – Aug 2009 | 0.2 | 0.22 | 0.55 |

SECTION 4- Graphs

This report contains several types of wind data graphs. Unless otherwise noted, each graph represents data from 1 quarter (3 months). The following graphs are included:

- Time Series – 10-minute average wind speeds are plotted against time. The graph shows that there were only very few occasions where the 10-minute average wind speeds rise above 10 m/s.
- Wind Speed Distribution – A histogram plot giving the percentage of time that the wind is at a given wind speed. The distribution peak occurs between 3 and 4 m/s and approximately 45% of the time the 10-minute average wind speed is higher than 4 m/s
- Monthly Average – A plot of the monthly average wind speed over a 7 month period. This graph shows the trends in the wind speed over the period. The summer months are when average wind speeds are at its minimum.
- Diurnal – A plot of the average wind speed for each hour of the day. The graph shows that there is a slight increase of wind speeds in the early afternoon.
- Turbulence Intensity – A plot of turbulence intensity as a function of wind speed. Turbulence Intensity is calculated as the standard deviation of the wind speed divided by the wind speed and is a measure of the gustiness of a wind resource. Lower turbulence results in lower mechanical loads on a wind turbine. The graphs shows that the turbulence intensity at the site is comparable to other sites in Massachusetts.
- Wind Rose – A plot, by compass direction showing the percentage of time that the wind comes from a given direction and the average wind speed in that direction. The majority of the wind is blowing from the south to west-southwest direction, although the wind also frequently comes from the north direction. The average wind speed coming in from the general south to west-southwest direction is slightly higher.

Data for the wind speed histograms, monthly and diurnal average plots, and wind roses are included in APPENDIX B.

Wind Speed Time Series

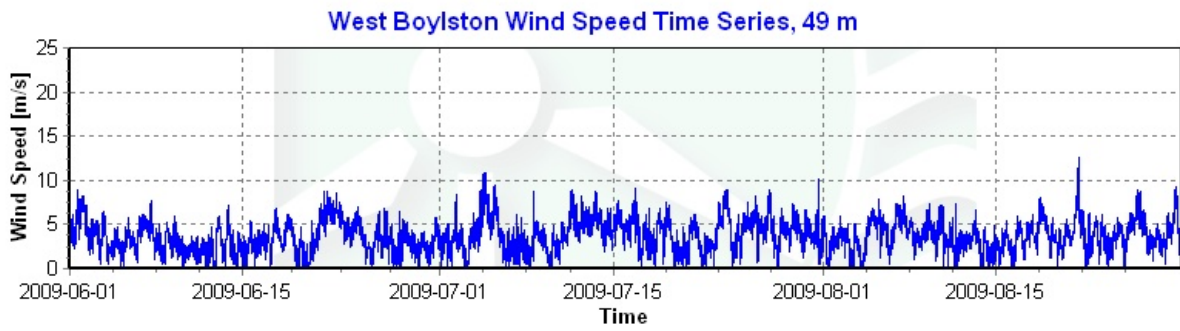


Figure 1 – Wind Speed Time Series, June 1 – August 31, 2009

Wind Speed Distributions

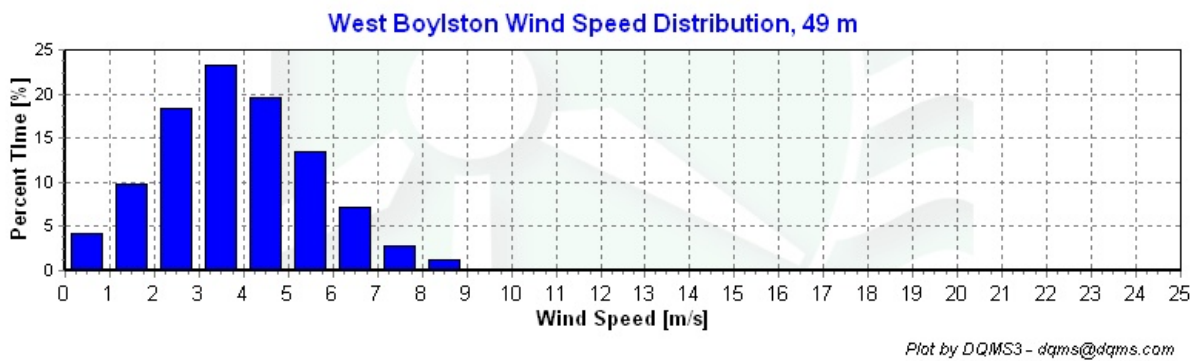


Figure 2 – Wind Speed Distribution, June 1 – August 31, 2009

Monthly Average Wind Speeds

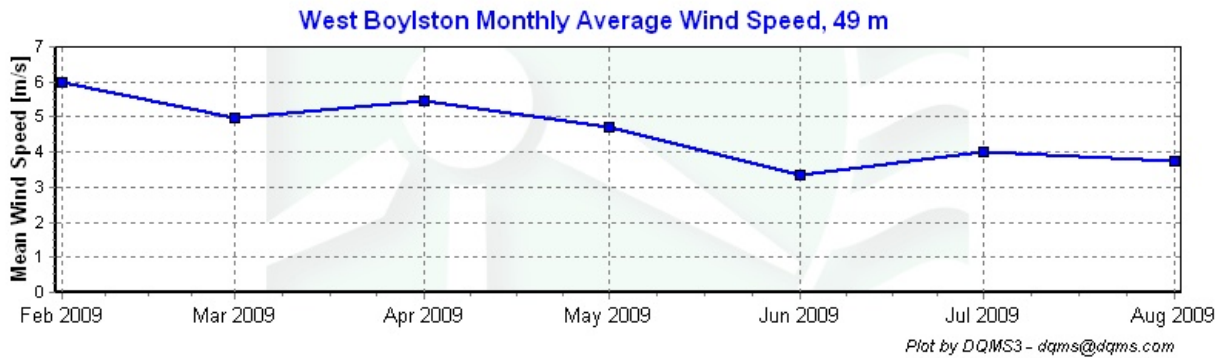
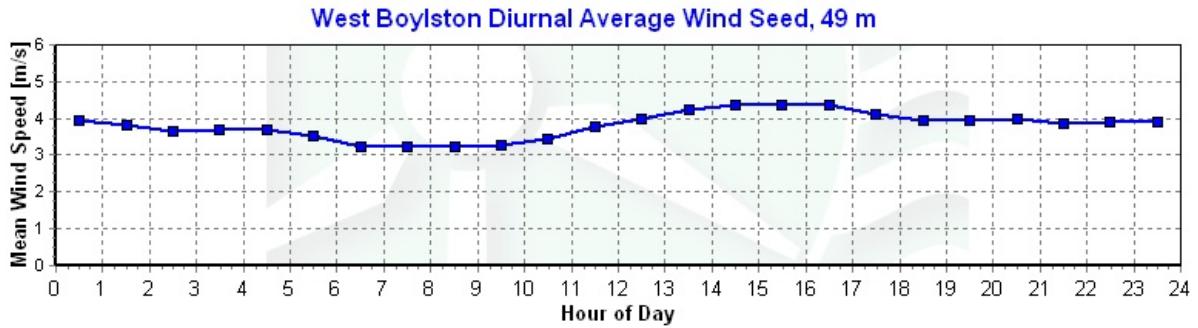


Figure 3 - Monthly Average Wind Speed, February 2009 – August 2009

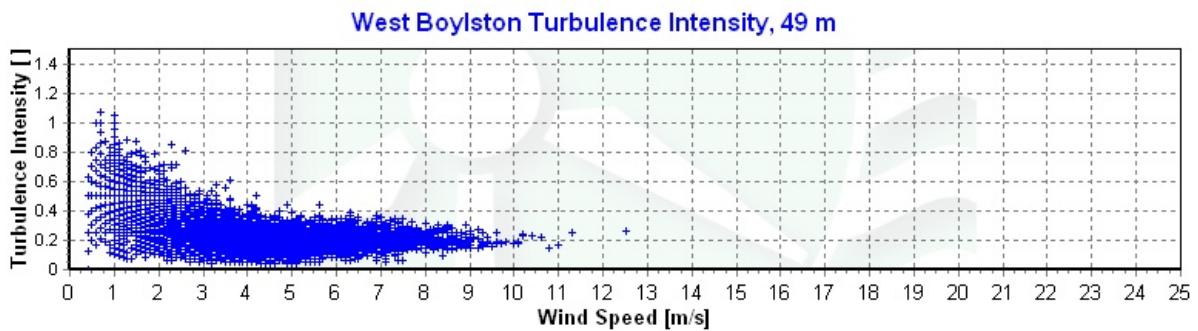
Diurnal Average Wind Speeds



Plot by DQMS3 - dqms@dqms.com

Figure 4 - Diurnal Average Wind Speeds, June 1 – August 31, 2009

Turbulence Intensities

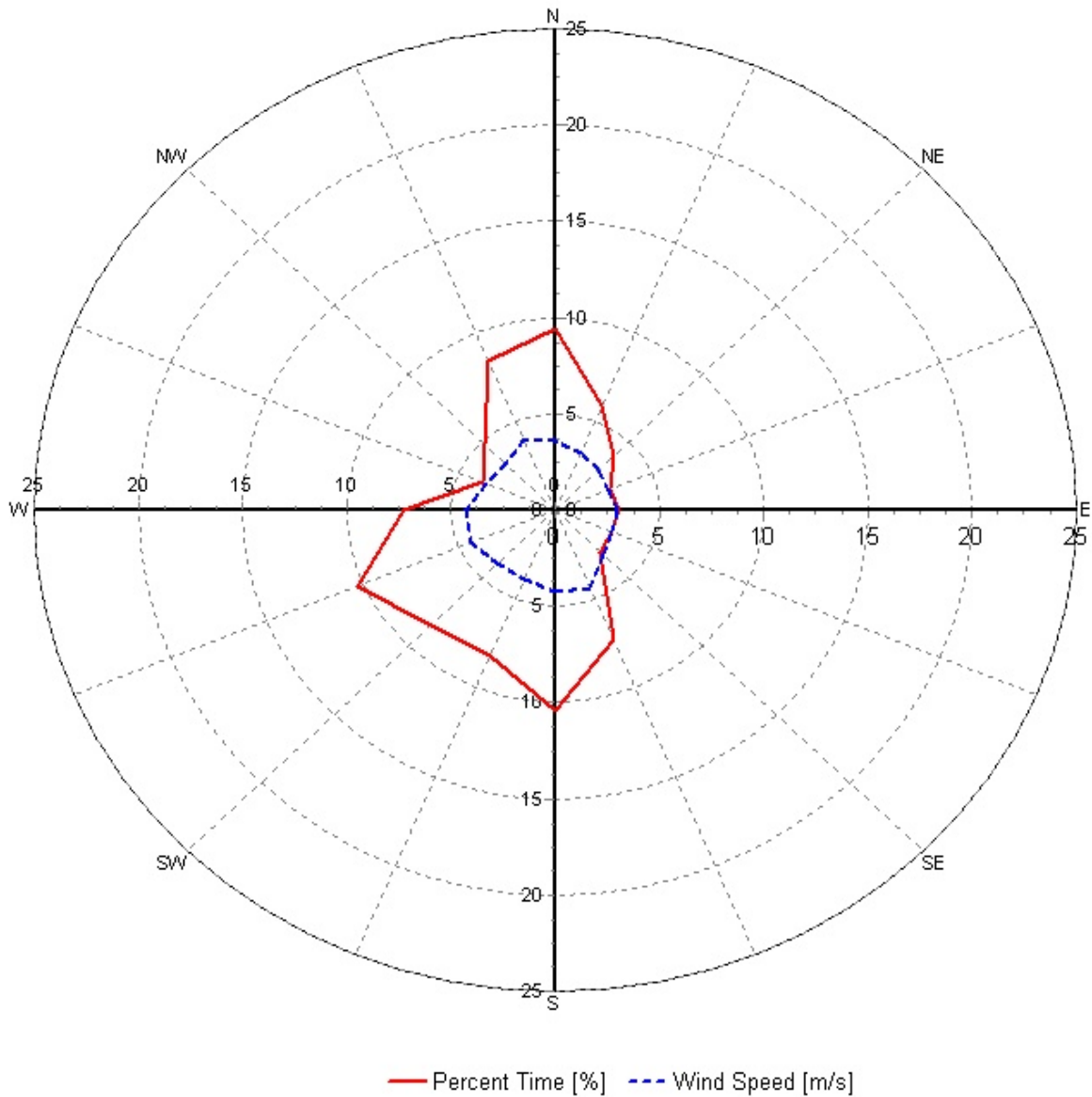


Plot by DQMS3 - dqms@dqms.com

Figure 5 - Turbulence Intensity vs. Wind Speed, June 1 – August 31, 2009

Wind Roses

West Boylston Wind Rose, 49 m



Plot by DQMS3 - dqms@dqms.com

Figure 6 - Wind Rose, June 1– August 31, 2009

SECTION 5 - Significant Meteorological Events

There were no significant meteorological events during the reporting period.

SECTION 6 - Data Collection and Maintenance

All sensors and equipment functioned properly throughout the monitoring period. No maintenance was performed during this quarter.

SECTION 7 - Data Recovery and Validation

All raw wind data are subjected to a series of tests and filters to weed out data that are faulty or corrupted. Definitions of these quality assurance (QA) controls are given below under Test Definitions and Sensor Statistics. These control filters were designed to automate the quality control process and used many of the previous hand-worked data sets made at UMass to affect a suitable emulation. The gross percentage of data recovered (ratio of the number of raw data points received to data points expected) and net percentage (ratio of raw data points which passed all QA control tests to data points expected) are shown below.

| | |
|--------------------------|-------|
| Gross Data Recovered [%] | 100 |
| Net Data Recovered [%] | 99.97 |

Test Definitions

All raw data were subjected to a series of validation tests, as described below. The sensors tested and the parameters specific to each sensor are given in the Sensor Performance Report which is included in APPENDIX A. Data which were flagged as invalid were not included in the statistics presented in this report.

MinMax Test: All sensors are expected to report data values within a range specified by the sensor and logger manufacturers. If a value falls outside this range, it is flagged as invalid. A data value from the sensor listed in Test Field 1 (TF1) is flagged if it is less than Factor 1 (F1) or greater than Factor 2. This test has been applied to the following sensors (as applicable): wind speed, wind speed standard deviation, wind direction, temperature, and solar insolation.

$$F1 > TF1 > F2$$

MinMaxT Test: This is a MinMax test for wind direction standard deviation with different ranges applied for high and low wind speeds. A wind direction standard deviation data value (TF1) is flagged either if it is less than Factor 1, if the wind speed

(TF2) is less than Factor 4 and the wind direction standard deviation is greater than Factor 2, or if the wind speed is greater than or equal to Factor 4 and the wind direction standard deviation is greater than Factor 3.

$$\begin{aligned} & (\text{TF1} < \text{F1}) \\ & \text{or } (\text{TF2} < \text{F4} \text{ and } \text{TF1} > \text{F2}) \\ & \text{or } (\text{TF2} \geq \text{F4} \text{ and } \text{TF1} > \text{F3}) \end{aligned}$$

Icing Test: An icing event occurs when ice collects on a sensor and degrades its performance. Icing events are characterized by the simultaneous measurements of near-zero standard deviation of wind direction, non-zero wind speed, and near- or below-freezing temperatures. Wind speed, wind speed standard deviation, wind direction, and wind direction standard deviation data values are flagged if the wind direction standard deviation (CF1) is less than or equal to Factor 1 (F1), the wind speed (TF1) is greater than Factor 2 (F2), and the temperature (CF2) is less than Factor 3 (F3). To exit an icing event, the wind direction standard deviation must be greater than Factor 4.

$$\text{CF1} \leq \text{F1} \text{ and } \text{TF1} > \text{F2} \text{ and } \text{CF2} < \text{F3}$$

CompareSensors Test: Where primary and redundant sensors are used, it is possible to determine when one of the sensors is not performing properly. For anemometers, poor performance is characterized by low data values. Therefore, if one sensor of the pair reports values significantly below the other, the low values are flagged. At low wind speeds (Test Fields 1 and 2 less than or equal to Factor 3) wind speed data are flagged if the absolute difference between the two wind speeds is greater than Factor 1. At high wind speeds (Test Fields 1 or 2 greater than Factor 3) wind speed data are flagged if the absolute value of the ratio of the two wind speeds is greater is greater than Factor 2.

$$\begin{aligned} & [\text{TF1} \leq \text{F3} \text{ and } \text{TF2} \leq \text{F3} \text{ and } \text{abs}(\text{TF1} - \text{TF2}) > \text{F1}] \\ & \text{or } [(\text{TF1} > \text{F3} \text{ or } \text{TF2} > \text{F3}) \text{ and } (\text{abs}(1 - \text{TF1} / \text{TF2}) > \text{F2} \text{ or } \text{abs}(1 - \text{TF2} / \text{TF1}) > \text{F2})] \end{aligned}$$

Sensor Statistics

A summary of the results of the data collection and filtering are given in the Sensor Performance Report which is included in APPENDIX A. The following categories of information, tabulated for each sensor, are included in that report.

Expected Data Points: the total number of sample intervals between the start and end dates (inclusive).

Actual Data Points: the total number of data points recorded between the start and end dates.

% Data Recovered: the ratio of actual and expected data points (this is the *gross data recovered percentage*).

Hours Out of Range: total number of hours for which data were flagged according to MinMax and MinMaxT tests. These tests flag data which fall outside of an expected range.

Hours of Icing: total number of hours for which data were flagged according to Icing tests. This test uses the standard deviation of wind direction, air temperature, and wind speed to determine when sensor icing has occurred.

Hours of Fault: total number of hours for which data were flagged according to CompareSensors tests. These tests compare two sensors (e.g. primary and redundant anemometers installed at the same height) and flag data points where one sensor differs significantly from the other.

% Data Good: the filter results are subtracted from the gross data recovery percentage to yield the *net data recovered percentage*.

APPENDIX A - Sensor Performance Report

Test Definitions

| Test Order | TestField1 | TestField2 | TestField3 | CalcField1 | CalcField2 | CalcField3 | TestType | Factor1 | Factor2 | Factor3 | Factor4 |
|------------|-------------------|-----------------|----------------|------------------|-----------------|------------|--------------------|---------|---------|---------|---------|
| 1 | | | | | | | TimeTest Insert | 0 | 0 | 0 | 0 |
| 2 | Anem49aMS | | | | | | MinMax | 0 | 90 | 0 | 0 |
| 3 | Anem49bMS | | | | | | MinMax | 0 | 90 | 0 | 0 |
| 4 | Anem38aMS | | | | | | MinMax | 0 | 90 | 0 | 0 |
| 5 | Anem38bMS | | | | | | MinMax | 0 | 90 | 0 | 0 |
| 6 | Anem49yMS | | | | | | MinMax | 0 | 90 | 0 | 0 |
| 7 | Anem38yMS | | | | | | MinMax | 0 | 90 | 0 | 0 |
| 8 | Vane49aDEG | | | | | | MinMax | 0 | 359.9 | 0 | 0 |
| 9 | Vane38aDEG | | | | | | MinMax | 0 | 359.9 | 0 | 0 |
| 10 | Etemp2aDEGF | | | | | | MinMax | -30 | 60 | 0 | 0 |
| 11 | Batt2aVDC | | | | | | MinMax | 10.5 | 15 | 0 | 0 |
| 12 | Turb49zNONE | | | | | | MinMax | 0 | 2 | 0 | 0 |
| 13 | Turb38zNONE | | | | | | MinMax | 0 | 2 | 0 | 0 |
| 14 | AnemSD49aMS | | | | | | MinMax | 0 | 4 | 0 | 0 |
| 15 | AnemSD49bMS | | | | | | MinMax | 0 | 4 | 0 | 0 |
| 16 | AnemSD38aMS | | | | | | MinMax | 0 | 4 | 0 | 0 |
| 17 | AnemSD38bMS | | | | | | MinMax | 0 | 4 | 0 | 0 |
| 18 | AnemSD49yMS | | | | | | MinMax | 0 | 4 | 0 | 0 |
| 19 | AnemSD38yMS | | | | | | MinMax | 0 | 4 | 0 | 0 |
| 21 | EtempSD2a DEGF | | | | | | MinMax | -30 | 60 | 0 | 0 |
| 22 | BattSD2aVDC | | | | | | MinMax | 0 | 5 | 0 | 0 |
| 200 | VaneSD49a DEG | Anem49yMS | | | | | MinMax T | 0 | 100 | 100 | 10 |
| 201 | VaneSD38a DEG | Anem38yMS | | | | | MinMax T | 0 | 100 | 100 | 10 |
| 300 | Anem49aMS | AnemSD49a MS | Vane49a DEG | VaneSD49a DEG | Etemp2a DEGF | | Icing | 0.5 | 1 | 2 | 4 |
| 301 | Anem49bMS | AnemSD49b MS | Vane49a DEG | VaneSD49a DEG | Etemp2a DEGF | | Icing | 0.5 | 1 | 2 | 4 |
| 302 | Anem38aMS | AnemSD38a MS | Vane38a DEG | VaneSD38a DEG | Etemp2a DEGF | | Icing | 0.5 | 1 | 2 | 4 |
| 303 | Anem38bMS | AnemSD38b MS | Vane38a DEG | VaneSD38a DEG | Etemp2a DEGF | | Icing | 0.5 | 1 | 2 | 4 |
| 400 | Anem49aMS | Anem49bMS | | | | | Compare Sensors | 1 | 0.25 | 3 | 0 |
| 401 | Anem38aMS | Anem38bMS | | | | | Compare Sensors | 1 | 0.25 | 3 | 0 |

Sensor Statistics

| Sensor | Expected Data Points | Actual Data Points | % Data Recovered | Hours Out of Range | Hours of Icing | Hours of Fault | % Data Good |
|---------------|----------------------|--------------------|------------------|--------------------|----------------|----------------|-------------|
| Etemp2aDEGF | 13248 | 13248 | 100 | 0 | 0 | 0 | 100 |
| EtempSD2aDEGF | 13248 | 13248 | 100 | 0 | 0 | 0 | 100 |
| Batt2aVDC | 13248 | 13248 | 100 | 0 | 0 | 0 | 100 |
| Anem49aMS | 13248 | 13248 | 100 | 2 | 0 | 0 | 99.91 |
| AnemSD49aMS | 13248 | 13248 | 100 | 2 | 0 | 0 | 99.91 |
| Anem49bMS | 13248 | 13248 | 100 | 0.17 | 0 | 0 | 99.99 |
| AnemSD49bMS | 13248 | 13248 | 100 | 0.17 | 0 | 0 | 99.99 |
| Vane49aDEG | 13248 | 13248 | 100 | 0.5 | 0 | 0 | 99.98 |
| VaneSD49aDEG | 13248 | 13248 | 100 | 0.5 | 0 | 0 | 99.98 |
| Anem38aMS | 13248 | 13248 | 100 | 0.5 | 0 | 0 | 99.98 |
| AnemSD38aMS | 13248 | 13248 | 100 | 0.5 | 0 | 0 | 99.98 |
| Anem38bMS | 13248 | 13248 | 100 | 0.67 | 0 | 0 | 99.97 |
| AnemSD38bMS | 13248 | 13248 | 100 | 0.67 | 0 | 0 | 99.97 |
| Vane38aDEG | 13248 | 13248 | 100 | 1.5 | 0 | 0 | 99.93 |
| VaneSD38aDEG | 13248 | 13248 | 100 | 1.5 | 0 | 0 | 99.93 |
| | | | | | | | |
| Total | 198720 | 198720 | 100 | 10.67 | 0 | 0 | 99.97 |

APPENDIX B - Plot Data

Wind Speed Distribution Data

| Bin Center Wind Speed [m/s] | Percent of Time [%] |
|--------------------------------|------------------------|
| 0.5 | 4.24 |
| 1.5 | 9.75 |
| 2.5 | 18.3 |
| 3.5 | 23.26 |
| 4.5 | 19.56 |
| 5.5 | 13.53 |
| 6.5 | 7.11 |
| 7.5 | 2.8 |
| 8.5 | 1.15 |
| 9.5 | 0.23 |
| 10.5 | 0.06 |
| 11.5 | 0.02 |
| 12.5 | 0.01 |
| 13.5 | 0 |
| 14.5 | 0 |
| 15.5 | 0 |
| 16.5 | 0 |
| 17.5 | 0 |
| 18.5 | 0 |
| 19.5 | 0 |
| 20.5 | 0 |
| 21.5 | 0 |
| 22.5 | 0 |
| 23.5 | 0 |
| 24.5 | 0 |

Monthly Average Wind Speed Data

| Date | 10 min Mean [m/s] |
|--------|----------------------|
| Feb-09 | 5.98 |
| Mar-09 | 4.98 |
| Apr-09 | 5.52 |
| May-09 | 4.75 |
| Jun-09 | 3.45 |
| Jul-09 | 4.12 |
| Aug-09 | 3.85 |

Diurnal Average Wind Speed Data

| Hour of Day | Average Wind Speed [m/s] |
|-------------|-----------------------------|
| 0.5 | 3.96 |
| 1.5 | 3.82 |
| 2.5 | 3.66 |
| 3.5 | 3.68 |
| 4.5 | 3.67 |
| 5.5 | 3.52 |
| 6.5 | 3.24 |
| 7.5 | 3.22 |
| 8.5 | 3.25 |
| 9.5 | 3.25 |
| 10.5 | 3.46 |
| 11.5 | 3.77 |
| 12.5 | 4 |
| 13.5 | 4.24 |
| 14.5 | 4.34 |
| 15.5 | 4.38 |
| 16.5 | 4.37 |
| 17.5 | 4.13 |
| 18.5 | 3.96 |
| 19.5 | 3.95 |
| 20.5 | 3.97 |
| 21.5 | 3.87 |
| 22.5 | 3.89 |
| 23.5 | 3.9 |

Wind Rose Data

| Direction | Percent Time [%], 49 m | Mean Wind Speed [m/s], 49 m |
|-----------|---------------------------|--------------------------------|
| N | 9.40 | 3.58 |
| NNE | 5.87 | 3.2 |
| NE | 3.99 | 2.96 |
| ENE | 2.88 | 2.74 |
| E | 3.09 | 2.96 |
| ESE | 2.92 | 2.97 |
| SE | 3.08 | 3.31 |
| SSE | 7.26 | 4.42 |
| S | 10.40 | 4.26 |
| SSW | 8.21 | 3.93 |
| SW | 8.42 | 3.92 |
| WSW | 10.28 | 4.37 |
| W | 7.24 | 4.33 |
| WNW | 3.78 | 3.6 |

| | | |
|------------|------|------|
| NW | 4.78 | 3.39 |
| NNW | 8.40 | 3.98 |