

WIND DATA REPORT

Templeton, MA

October 1, 2011 – December 31, 2011

Prepared for

Massachusetts Division of Capital Asset Management
One Ashburton Place, 15th Floor
Boston, MA 02108

by

Meltem Duran
James F. Manwell
Anthony F. Ellis

January 15, 2012

Report template version 3.1.2

Wind Energy Center

University of Massachusetts, Amherst
160 Governors Drive, Amherst, MA 01003

www.umass.edu/windenergy • (413) 545-4359 • wec@ecs.umass.edu



NOTICE AND ACKNOWLEDGEMENTS

This report was prepared by the Wind Energy Center (WEC) at the University of Massachusetts, Amherst in the course of performing work sponsored by the Renewable Energy Trust (RET), as administered by the Massachusetts in the course of performing work sponsored by the Massachusetts Division of Capital Asset Management. The opinions expressed in this report do not necessarily reflect those of the Commonwealth of Massachusetts, and reference to any specific product, service, process, or method does not constitute an implied or expressed recommendation or endorsement of it.

Further, the Commonwealth of Massachusetts, and WEC make no warranties or representations, expressed or implied, as to the fitness for particular purpose or merchantability of any product, apparatus, or service, or the usefulness, completeness, or accuracy of any processes, methods or other information contained, described, disclosed, or referred to in this report. The Commonwealth of Massachusetts, and WEC make no representation that the use of any product, apparatus, process, method, or other information will not infringe privately owned rights and will assume no liability for any loss, injury, or damage directly or indirectly resulting from, or occurring in connection with, the use of information contained, described, disclosed, or referred to in this report.

TABLE OF CONTENTS

Notice and Acknowledgements	1
Table of Contents	2
Table of Figures	3
Executive Summary	4
SECTION 1 - Station Location.....	5
SECTION 2 - Instrumentation and Equipment.....	5
SECTION 3 - Data Summary	6
SECTION 4 - Graphs.....	8
Wind Speed Time Series.....	9
Wind Speed Distributions	9
Monthly Average Wind Speeds	10
Diurnal Average Wind Speeds.....	10
Turbulence Intensities	10
Wind Roses	11
SECTION 5 - Significant Meteorological Events	12
SECTION 6 - Data Collection and Maintenance.....	12
SECTION 7 - Data Recovery and Validation.....	12
Test Definitions.....	12
Sensor Statistics	13
APPENDIX A - Sensor Performance Report	15
Test Definitions.....	15
Sensor Statistics	15
APPENDIX B - Plot Data.....	16
Wind Speed Distribution Data	16
Monthly Average Wind Speed Data	16
Diurnal Average Wind Speed Data.....	17
Wind Rose Data	18

TABLE OF FIGURES

Figure 1 – Meteorological Tower location in Templeton, MA	5
Figure 2 – Templeton Wind Speed Time Series for October 1 to December 31, 2011	9
Figure 3 – Templeton Wind Speed Distribution for October 1 to December 31, 2011	9
Figure 4 – Templeton Monthly Wind Speed Averages for October 1 2011 to December 31 2011	10
Figure 5 – Templeton Diurnal Average Wind Speeds for October 1 to December 31, 2011	10
Figure 6 – Templeton Turbulence Intensity for October 1 to December 31, 2011	10
Figure 7 – Templeton Wind Rose for October 1 to December 31, 2011	11

EXECUTIVE SUMMARY

All the work presented in this Wind Data Report including installation and decommissioning of the meteorological tower and instrumentation, and the data analysis and reporting was performed by the Wind Energy Center (WEC) at the University of Massachusetts, Amherst.

This report covers wind data measured at Templeton, MA. It was installed in September but raised on October 7 2011. The raising was delayed due to problems with the installation of anchors. The site will be fully functional for the next quarter. Two cup anemometers are mounted at each height of 49m (161 ft), and 38m (125 ft). There is one wind vane at the height of 38 m and another wind vane at the height of 24 m.

The period covered by this report is October 2011 through December 2011. The mean recorded wind speed was 5.12 m/s (11.45 mph) at 50 m and the prevailing wind direction was from the southwest. The average turbulence intensity at 49 m was 0.20. The gross data recovery percentage (the actual percentage of expected data received) was 92.8 % and the net data recovery percentage (the percentage of expected data which passed all of the quality assurance tests) was 90.1%.

Additional information about interpreting the data presented in this report can be found in the Fact Sheet, “Interpreting Your Wind Resource Data,” produced by RERL and the Massachusetts Technology Collaborative (MTC). This document is found through the RERL website:

www.umass.edu/windenergy/publications/published/communityWindFactSheets/RERL_Fact_Sheet_6_Wind_resource_interpretation.pdf

* 1 m/s = 2.237 mph.

SECTION 1 - Station Location

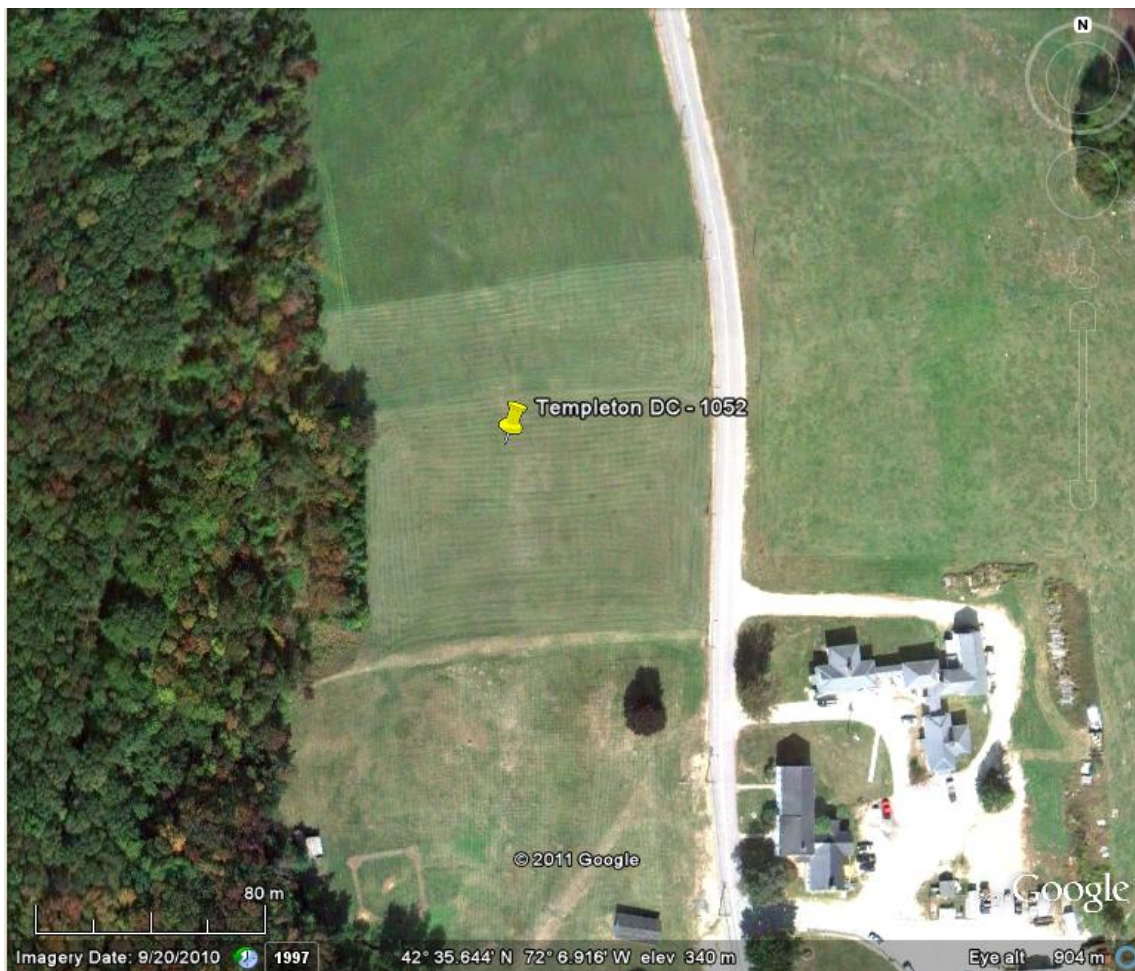


Figure 1 – Meteorological Tower location in Templeton, MA

The tower is located in Templeton, MA. The site coordinates are $42^{\circ} 35.643' N$, $72^{\circ} 7.015' W$. These coordinates correspond to the WGS84 datum.

SECTION 2 - Instrumentation and Equipment

The wind monitoring equipment is mounted on an NRG Systems 50 meter meteorological tower. The wind monitoring equipment includes:

- 1 – Calibrated MAX 40 Anemometer (slope - 0.755 m/s, offset – 0.39 m/s). The anemometer is located at a height of 49m (161 ft)
- 3 - Comptus A75-104 Anemometers (standard slope - 0.765 m/s, offset – 0.35 m/s). One anemometer is located at 49 m (161 ft) and the other two are located at 38 m (125 ft).

- 2 – Comptus A75-302 wind direction vanes. One vane is located at a height of 38 m (125 ft) and the other at a height of 24 m (79 ft).
- #110S thermostat (temperature sensor). The sensor is located 1.5 m (5 ft) from the tower base.
- NRG Systems Symphonie Plus data logger

SECTION 3- Data Summary

A summary of the wind speeds and wind directions measured during the reporting period is included in Table 1. Table 1 includes the mean wind speeds measured at each measurement height, the maximum instantaneous wind speed measured at each measurement height and the prevailing wind direction measured at each measurement height. These values are provided for each month of the reporting period and for the whole reporting period.

Table 1. Wind Speed and Direction Data Summary

Date	Mean Wind Speed	Max Wind Speed	Prevailing Wind Direction	Mean Wind Speed	Max Wind Speed	Prevailing Wind Direction
Height Units	49 m [m/s]	49 m [m/s]	49 m [m/s]	38 m [m/s]	38 m [m/s]	38 m [m/s]
Oct 2011	5.09	12.92	W	4.53	11.85	W
Nov 2011	5.18	12.12	SSW	4.59	10.79	SSW
Dec 2011	5.10	15.38	SSW	4.60	14.50	SSW
Oct 2011 – Dec 2011	5.12	15.38	SW	4.58	14.50	SSW

Wind data statistics in the table are reported when more than 90% of the data during the reporting period are valid. In cases when a larger amount of data is missing, the percent of the available data that are used to determine the data statistics is noted.

No measurement of wind speed or direction can be perfectly accurate. Wind speed measurement errors occur due to anemometer manufacturing variability, anemometer calibration errors, the response of anemometers to turbulence and vertical air flow and due to air flows caused by the anemometer mounting system. Every effort is made to reduce the sources of these errors. Nevertheless, the values reported in this report have an expected uncertainty of about $\pm 2\%$ or ± 0.2 m/s, whichever is greater. Wind direction measurement errors occur due to sensor measurement uncertainty, tower effects, boom alignment measurement errors and twisting of pipe sections during the raising of a pipe tower. Efforts are also made to reduce these errors, but the reported wind directions are estimated to have an uncertainty of ± 5 degrees.

A summary of the turbulence intensity and mean wind shear measured at each measurement height during the reporting period is included in Table 2. These values are provided for each month of the reporting period and for the whole reporting period. Turbulence Intensity is calculated by dividing the standard deviation of the wind speed by the mean wind speed and is a measure of the gustiness of a wind resource. Lower turbulence results in lower mechanical loads on a wind turbine. Turbulence intensity varies with wind speed. The average turbulence intensity presented in Table 2 is the mean turbulence intensity when the wind speed at each measurement height is between 10 and 11 m/s.

Shear coefficients provide a measure of the change in wind speed with height. When data at multiple heights are available, shear coefficients, α , have been determined. They can be used in the following formula to estimate the average wind speed, $U(z)$, at height z , when the average wind speed, $U(z_r)$, at height z_r is known:

$$U(z) = U(z_r) \left(\frac{z}{z_r} \right)^\alpha$$

The change in wind speed with height is a very complicated relationship related to atmospheric conditions, wind speed, wind direction, time of day and time of year. This formula will not always provide the correct answer at any given site. Nevertheless the calculated shear coefficient, based on measurements at two heights, can be used to characterize the degree of increase in wind speed with height at a site.

The mean wind shear coefficient that is provided here is calculated based on the mean wind speeds in Table 1, where z_{high} and z_{low} are the heights of the higher and lower mean wind speeds used in the calculation and $U(z_{low})$ and $U(z_{high})$ are the mean wind speeds at the two heights.

$$\alpha = \log \left(\frac{U(z_{high})}{U(z_{low})} \right) / \log \left(\frac{z_{high}}{z_{low}} \right)$$

Table 2. Shear and Turbulence Intensity Data Summary

Date	Turbulence Intensity at 10 m/s	Turbulence Intensity at 10 m/s	Mean Wind Shear Coefficient, α
Height Units	49 m [-]	38 m [-]	Between 49 m and 38 m [-]
Oct 2011	0.20	0.18	0.46
Nov 2011	0.20	0.22	0.47
Dec 2011	0.21	0.23	0.41
Oct 2011 – Dec 2011	0.20	0.23	0.44

SECTION 4- Graphs

This report contains several types of wind data graphs. Unless otherwise noted, each graph represents data from 1 quarter (3 months). The following graphs are included:

- Time Series – 10-minute average wind speeds are plotted against time.
- Wind Speed Distribution – A histogram plot giving the percentage of time that the wind is at a given wind speed.
- Monthly Average – A plot of the monthly average wind speed since the start of the measurement period. This graph shows the trends in the wind speed over the year. The average wind speed for October was not plotted because there was not enough data collected (above 90%) for this month.
- Diurnal – A plot of the average wind speed for each hour of the day. On average the wind speed was relatively uniformly distributed throughout the day. A slight peak can be observed over the middle of the day.
- Turbulence Intensity – A plot of turbulence intensity as a function of wind speed. Turbulence Intensity is calculated as the standard deviation of the wind speed divided by the wind speed and is a measure of the gustiness of a wind resource. Lower turbulence results in lower mechanical loads on a wind turbine. The data exhibits a normal trend of decreasing turbulence intensity with higher wind speed.
- Wind Rose – A plot, by compass direction showing the percentage of time that the wind comes from a given direction and the average wind speed in that direction.

Data for the wind speed histograms, monthly and diurnal average plots, and wind roses are included in APPENDIX B.

Wind Speed Time Series

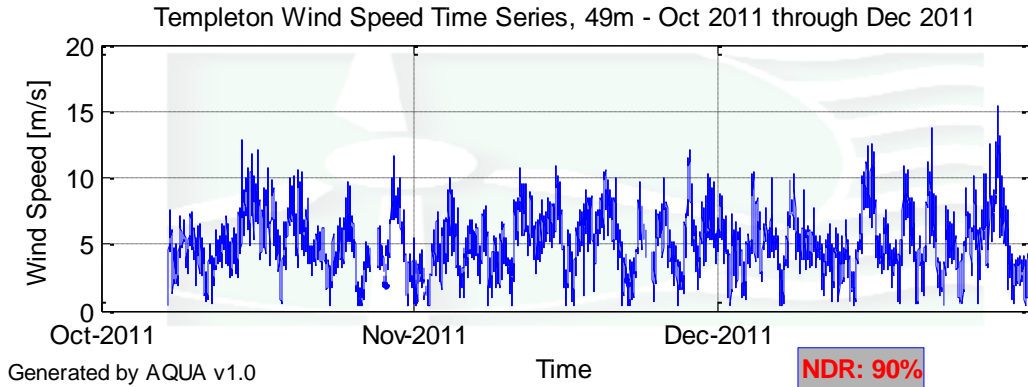


Figure 2 – Templeton Wind Speed Time Series for October 1 to December 31, 2011

Wind Speed Distributions

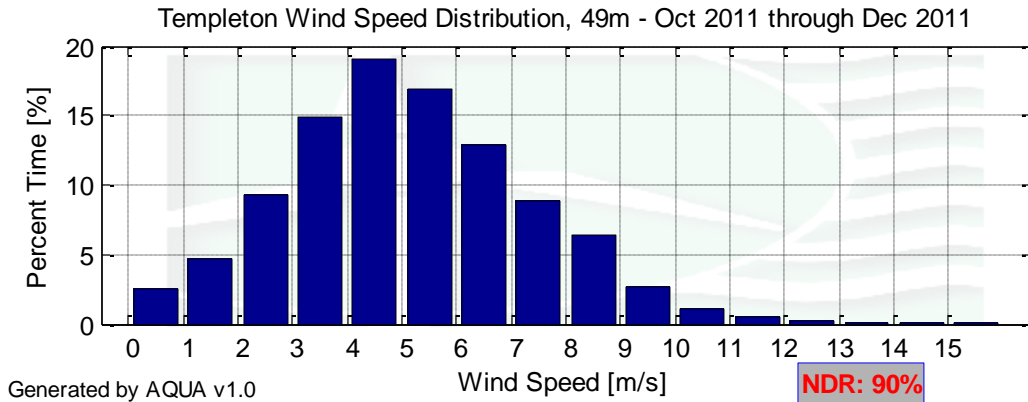


Figure 3 – Templeton Wind Speed Distribution for October 1 to December 31, 2011

Monthly Average Wind Speeds

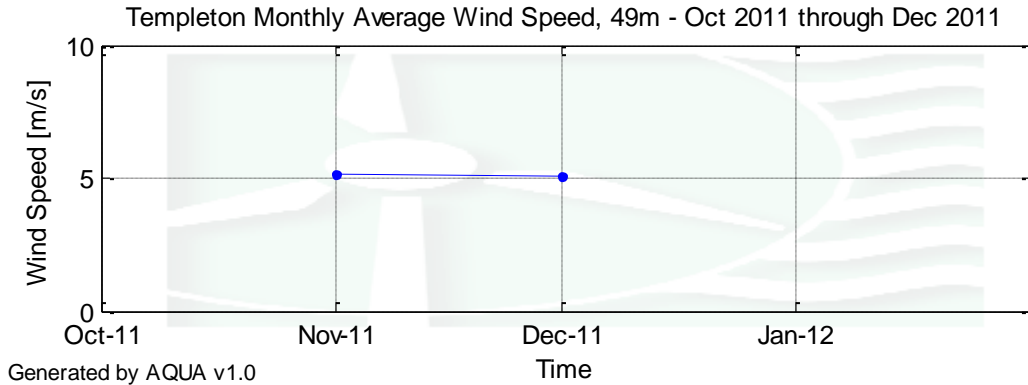


Figure 4 – Templeton Monthly Wind Speed Averages for October 1 2011 to December 31 2011

Diurnal Average Wind Speeds

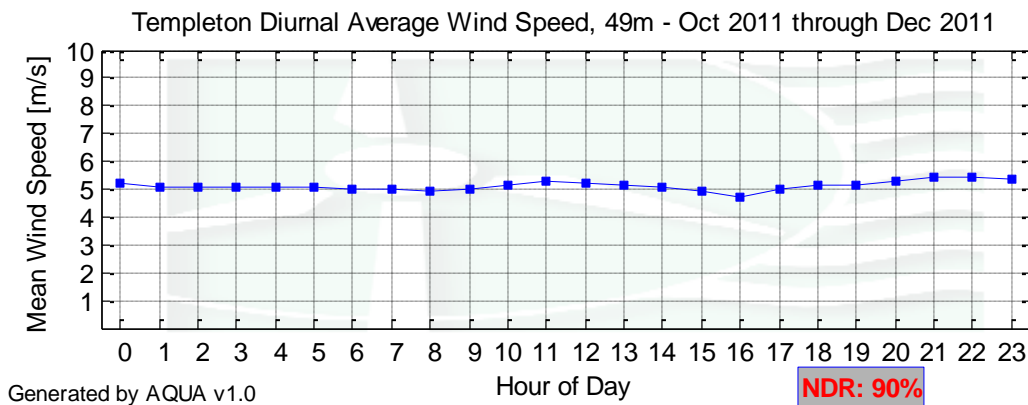


Figure 5 – Templeton Diurnal Average Wind Speeds for October 1 to December 31, 2011

Turbulence Intensities

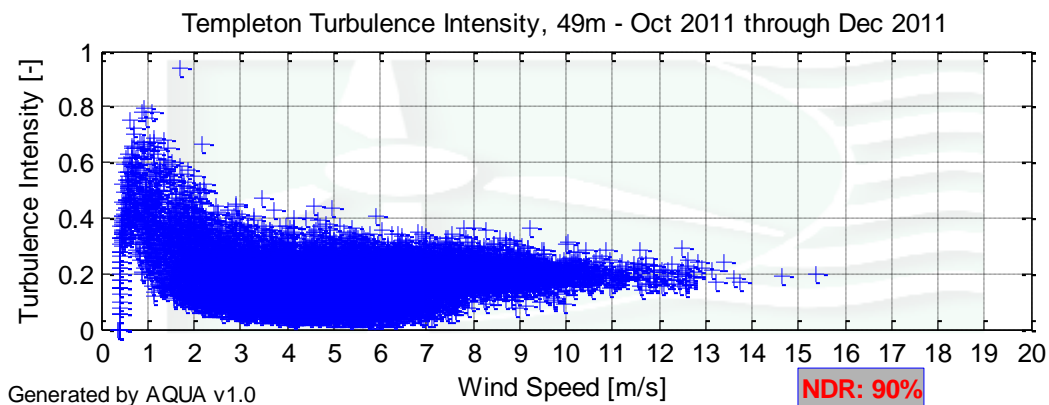
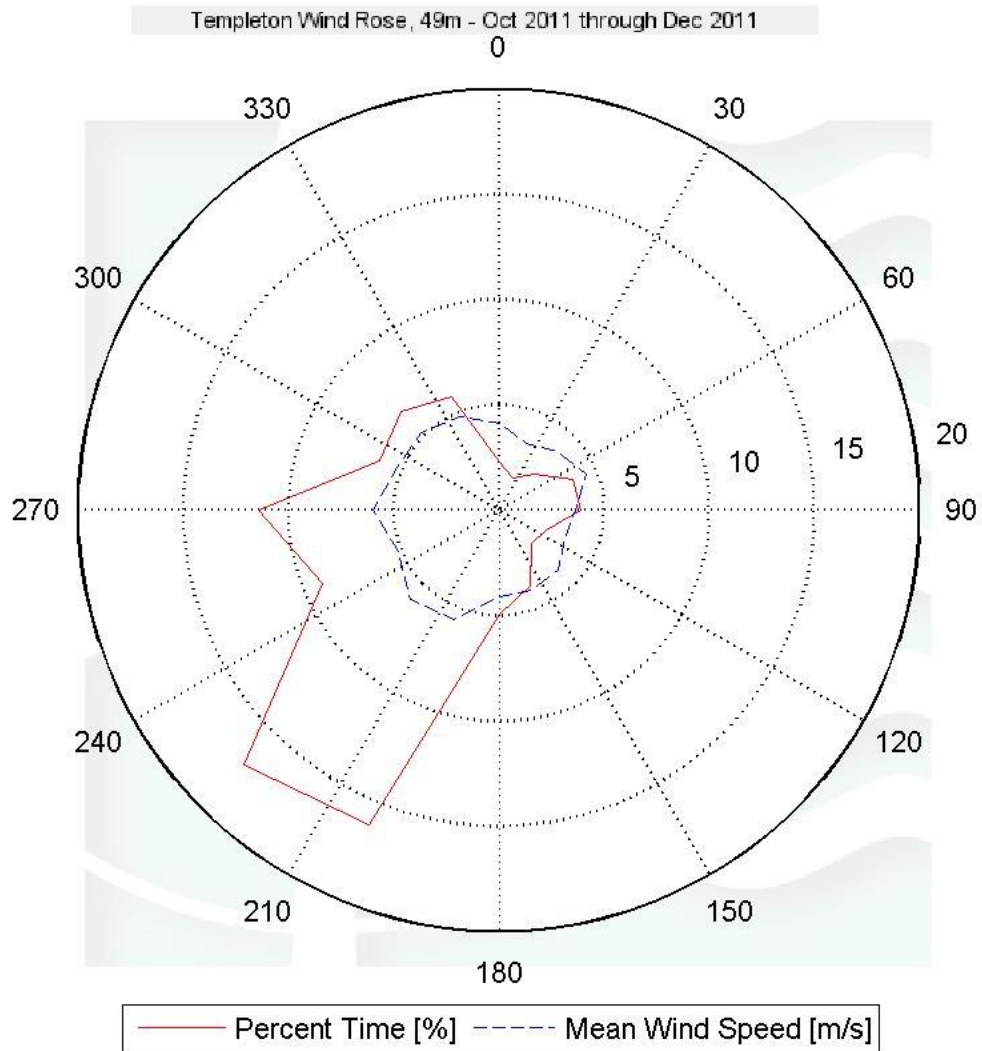


Figure 6 – Templeton Turbulence Intensity for October 1 to December 31, 2011

Wind Roses



Generated by AQUA v1.0

NDR: 89.9%

Figure 7 – Templeton Wind Rose for October 1 to December 31, 2011

SECTION 5 - Significant Meteorological Events

On October 30, a Nor'easter was observed. The storm developed on October 28 over Canada and reached Massachusetts on October 30. Winds as high as 69 mph were observed in Massachusetts.

SECTION 6 - Data Collection and Maintenance

On November 11, the ipack stopped calling in and a manual call was made to retrieve the data. On December 12 the ipack was removed for service.

SECTION 7 - Data Recovery and Validation

All raw wind data are subjected to a series of tests and filters to weed out data that are faulty or corrupted. Definitions of these quality assurance (QA) controls are given below under Test Definitions and Sensor Statistics. These control filters were designed to automate the quality control process and used many of the previous hand-worked data sets made at UMass to affect a suitable emulation. The gross percentage of data recovered (ratio of the number of raw data points received to data points expected) and net percentage (ratio of raw data points which passed all QA control tests to data points expected) are shown below. The gross data recovery was relatively low due to the fact that the station started recording data on October 7, 6 days after the beginning of the quarter.

Gross Data Recovered [%]	92.75
Net Data Recovered [%]	90.05

Test Definitions

All raw data were subjected to a series of validation tests, as described below. The sensors tested and the parameters specific to each sensor are given in the Sensor Performance Report which is included in APPENDIX A. Data which were flagged as invalid were not included in the statistics presented in this report.

MinMax Test: All sensors are expected to report data values within a range specified by the sensor and logger manufacturers. If a value falls outside this range, it is flagged as invalid. A data value from the sensor listed in Test Field 1 (TF1) is flagged if it is less than Factor 1 (F1) or greater than Factor 2. This test has been applied to the following sensors (as applicable): wind speed, wind speed standard deviation, wind direction, temperature, and solar insolation.

$$F1 > TF1 > F2$$

MinMaxT Test: This is a MinMax test for wind direction standard deviation with different ranges applied for high and low wind speeds. A wind direction standard deviation data value (TF1) is flagged either if it is less than Factor 1, if the wind speed (TF2) is less than Factor 4 and the wind direction standard deviation is greater than Factor 2, or if the wind speed is greater than or equal to Factor 4 and the wind direction standard deviation is greater than Factor 3.

$$\begin{aligned} & (\text{TF1} < \text{F1}) \\ & \text{or } (\text{TF2} < \text{F4} \text{ and } \text{TF1} > \text{F2}) \\ & \text{or } (\text{TF2} \geq \text{F4} \text{ and } \text{TF1} > \text{F3}) \end{aligned}$$

Icing Test: An icing event occurs when ice collects on a sensor and degrades its performance. Icing events are characterized by the simultaneous measurements of near-zero standard deviation of wind direction, non-zero wind speed, and near- or below-freezing temperatures. Wind speed, wind speed standard deviation, wind direction, and wind direction standard deviation data values are flagged if the wind direction standard deviation (CF1) is less than or equal to Factor 1 (F1), the wind speed (TF1) is greater than Factor 2 (F2), and the temperature (CF2) is less than Factor 3 (F3). To exit an icing event, the wind direction standard deviation must be greater than Factor 4.

$$\text{CF1} \leq \text{F1} \text{ and } \text{TF1} > \text{F2} \text{ and } \text{CF2} < \text{F3}$$

CompareSensors Test: Where primary and redundant sensors are used, it is possible to determine when one of the sensors is not performing properly. For anemometers, poor performance is characterized by low data values. Therefore, if one sensor of the pair reports values significantly below the other, the low values are flagged. At low wind speeds (Test Fields 1 and 2 less than or equal to Factor 3) wind speed data are flagged if the absolute difference between the two wind speeds is greater than Factor 1. At high wind speeds (Test Fields 1 or 2 greater than Factor 3) wind speed data are flagged if the absolute value of the ratio of the two wind speeds is greater is greater than Factor 2.

$$\begin{aligned} & [\text{TF1} \leq \text{F3} \text{ and } \text{TF2} \leq \text{F3} \text{ and } \text{abs}(\text{TF1} - \text{TF2}) > \text{F1}] \\ & \text{or } [(\text{TF1} > \text{F3} \text{ or } \text{TF2} > \text{F3}) \text{ and } (\text{abs}(1 - \text{TF1} / \text{TF2}) > \text{F2} \text{ or } \text{abs}(1 - \text{TF2} / \text{TF1}) > \text{F2})] \end{aligned}$$

Sensor Statistics

A summary of the results of the data collection and filtering are given in the Sensor Performance Report which is included in APPENDIX A. The following categories of information, tabulated for each sensor, are included in that report.

Expected Data Points: the total number of sample intervals between the start and end dates (inclusive).

Actual Data Points: the total number of data points recorded between the start and end dates.

% Data Recovered: the ratio of actual and expected data points (this is the *gross data recovered percentage*).

Hours Out of Range: total number of hours for which data were flagged according to MinMax and MinMaxT tests. These tests flag data which fall outside of an expected range.

Hours of Icing: total number of hours for which data were flagged according to Icing tests. This test uses the standard deviation of wind direction, air temperature, and wind speed to determine when sensor icing has occurred.

Hours of Fault: total number of hours for which data were flagged according to CompareSensors tests. These tests compare two sensors (e.g. primary and redundant anemometers installed at the same height) and flag data points where one sensor differs significantly from the other.

% Data Good: the filter results are subtracted from the gross data recovery percentage to yield the *net data recovered percentage*.

APPENDIX A - Sensor Performance Report

Test Definitions

TestOrder	TestField1	TestField2	TestField3	CalcField1	CalcField2	TestType	Factor1	Factor2	Factor3	Factor4
1	Temp>T_val					MinMax	-30	60	0	0
2	Anem38a>WS_val					MinMax	0	90	0	0
3	Anem38a>WS_SD					MinMax	0	4	0	0
4	Anem38b>WS_val					MinMax	0	90	0	0
5	Anem38b>WS_SD					MinMax	0	4	0	0
6	Vane38>WD_val					MinMax	0	359.9	0	0
7	Vane38>WD_SD					MinMax	0	100	0	0
8	Anem49a>WS_val					MinMax	0	90	0	0
9	Anem49a>WS_SD					MinMax	0	4	0	0
10	Anem49b>WS_val					MinMax	0	90	0	0
11	Anem49b>WS_SD					MinMax	0	4	0	0
12	Vane49>WD_val					MinMax	0	359.9	0	0
13	Vane49>WD_SD					MinMax	0	100	0	0
14	Anem38a>WS_val	Anem38b>WS_val				Comp Sens	1	0.25	3	0
15	Anem49a>WS_val	Anem49b>WS_val				Comp Sens	1	0.25	3	0
16	Anem38a>WS_val	Anem38a>WS_SD	Vane38>WD_val	Vane38>WD_SD	Temp>T_val	Icing	0.5	1	2	4
17	Anem38b>WS_val	Anem38b>WS_SD	Vane38>WD_val	Vane38>WD_SD	Temp>T_val	Icing	0.5	1	2	4
18	Anem49a>WS_val	Anem49a>WS_SD	Vane49>WD_val	Vane49>WD_SD	Temp>T_val	Icing	0.5	1	2	4
19	Anem49b>WS_val	Anem49b>WS_SD	Vane49>WD_val	Vane49>WD_SD	Temp>T_val	Icing	0.5	1	2	4

Sensor Statistics

	Expected Data Points	Actual Data Points	% Data Recovered	Hours Out of Range	Hours of Icing	Hours of Fault	%Data Good
Temp	13248	12288	92.754	0.667	0	0	92.723
Vane24	13248	12288	92.754	1	37	0	91.033
Anem1_38	13248	12288	92.754	0	35.5	28	89.878
Anem2_38	13248	12288	92.754	0	36.833	2.5	90.987
Vane38	13248	12288	92.754	0.167	62.833	0	89.9
Anem1_49	13248	12288	92.754	0	62.167	83.667	86.149
Anem2_49	13248	12288	92.754	0	61.5	6.333	89.697
Total	92736	86016	92.754	1.833	295.833	120.5	90.052

APPENDIX B - Plot Data

Wind Speed Distribution Data

Bin Center [m/s]	Percent Time [%]
0.5	2.5
1.5	4.72
2.5	9.24
3.5	14.91
4.5	19.05
5.5	16.9
6.5	12.87
7.5	8.91
8.5	6.36
9.5	2.68
10.5	1.09
11.5	0.44
12.5	0.26
13.5	0.04
14.5	0.01
15.5	0.01

Monthly Average Wind Speed Data

Month	Mean Wind Speed [[m/s]
Oct-11	5.090
Nov-11	5.175
Dec-11	5.100

Diurnal Average Wind Speed Data

Hour of Day	Mean Wind Speed [m/s]
0	5.24
1	5.1
2	5.09
3	5.1
4	5.07
5	5.07
6	5.04
7	4.98
8	4.94
9	5.01
10	5.12
11	5.31
12	5.25
13	5.12
14	5.05
15	4.92
16	4.72
17	5.02
18	5.12
19	5.15
20	5.29
21	5.45
22	5.46
23	5.32

Wind Rose Data

Bin Center [deg]	Percent Time [%]	Mean Wind Speed [m/s]
0	2.3	4.1
22.5	1.66	3.44
45	2.42	3.9
67.5	3.84	4.48
90	3.9	3.63
112.5	2.41	3.41
135	2.23	4.02
157.5	3.9	4.11
180	4.95	4.11
202.5	16.17	5.62
225	17.15	6
247.5	9.08	5.17
270	11.44	5.96
292.5	6.13	5.22
315	6.61	5.22
337.5	5.81	4.82