

WIND DATA REPORT

Plymouth South High School

October 1, 2010 – December 31, 2010

Prepared for

Massachusetts Clean Energy Center
55 Summer Street, 9th Floor
Boston, MA 02110

by

Preeti Verma
James F. Manwell
Utama Abdulwahid
Anthony F. Ellis

March 21, 2011

Wind Energy Center
University of Massachusetts, Amherst
160 Governors Drive, Amherst, MA 01003
www.umass.edu/windenergy • (413) 545-4359 • wec@ecs.umass.edu



NOTICE AND ACKNOWLEDGEMENTS

This report was prepared by the Wind Energy Center (WEC) at the University of Massachusetts, Amherst in the course of performing work sponsored by the Renewable Energy Trust (RET), as administered by the Massachusetts Clean Energy Center (MassCEC). The opinions expressed in this report do not necessarily reflect those of MTC or the Commonwealth of Massachusetts, and reference to any specific product, service, process, or method does not constitute an implied or expressed recommendation or endorsement of it.

Further, MassCEC, the Commonwealth of Massachusetts, and the Wind Energy Center make no warranties or representations, expressed or implied, as to the fitness for particular purpose or merchantability of any product, apparatus, or service, or the usefulness, completeness, or accuracy of any processes, methods or other information contained, described, disclosed, or referred to in this report. MassCEC, the Commonwealth of Massachusetts, and the Wind Energy Center make no representation that the use of any product, apparatus, process, method, or other information will not infringe privately owned rights and will assume no liability for any loss, injury, or damage directly or indirectly resulting from, or occurring in connection with, the use of information contained, described, disclosed, or referred to in this report.

TABLE OF CONTENTS

Notice and Acknowledgements	1
Table of Contents	2
Table of Figures	3
Executive Summary	4
SECTION 1 - Station Location	5
SECTION 2 - Instrumentation and Equipment	6
SECTION 3 - Data Summary	6
SECTION 4 - Graphs	9
Wind Speed Time Series	10
Wind Speed Distributions	10
Monthly Average Wind Speeds	11
Diurnal Average Wind Speeds	11
Turbulence Intensities	11
Wind Roses	12
SECTION 5 - Significant Meteorological Events	13
SECTION 6 - Data Collection and Maintenance	13
SECTION 7 - Data Recovery and Validation	13
Test Definitions	13
Sensor Statistics	14
APPENDIX A - Sensor Performance Report	16
Test Definitions	16
Sensor Statistics	17
APPENDIX B - Plot Data	18
Wind Speed Distribution Data	18
Monthly Average Wind Speed Data	19
Diurnal Average Wind Speed Data	20
Wind Rose Data	21

TABLE OF FIGURES

Figure 1 – Site Location.....	5
Figure 2 – Wind Speed Time Series, October 2010 - December 2010.....	10
Figure 3 – Wind Speed Distribution, October 2010 - December 2010	10
Figure 4 – Monthly Average Wind Speed, September 2010 – December 2010.....	11
Figure 5 – Diurnal Average Wind Speed, October 2010 - December 2010	11
Figure 6 – Turbulence Intensity, October 2010 - December 2010	11
Figure 7 – Wind Rose, October 2010 - December 2010.....	12

EXECUTIVE SUMMARY

All the work presented in this Wind Data Report including installation and decommissioning of the meteorological tower and instrumentation, and the data analysis and reporting was performed by the Wind Energy Center (WEC) at the University of Massachusetts, Amherst.

Wind monitoring equipment was installed at the South High School in Plymouth in April 2010. The base of the 50 m meteorological tower is installed 34 m above sea level. Anemometers and wind direction vanes are installed at 38 and 50 m (125 and 164 ft) above the tower base. There are redundant anemometers at both heights. There is a temperature sensor installed near the base of the tower.

This report summarizes the wind data collected during the fourth quarter of 2010, between October 2010 and December 2010. The mean recorded wind speed was 6.79 m/s (15.19 mph) at 50 m and the prevailing wind direction was from the north-west. The average wind shear exponent was 0.33. The average turbulence intensity at 50 m was 0.18.

The gross data recovery percentage (the actual percentage of expected data received) was 100% and the net data recovery percentage (the percentage of expected data which passed all of the quality assurance tests) was 85.7%.

Additional information about interpreting the data presented in this report can be found in the Fact Sheet, "Interpreting Your Wind Resource Data," produced by WEC and the Massachusetts Technology Collaborative (MTC). This document is found through the WEC website:

http://www.ceere.org/rerl/about_wind/RERL_Fact_Sheet_6_Wind_resource_interpretation.pdf

* 1 m/s = 2.237 mph.

SECTION 1 - Station Location

The Plymouth monitoring tower is located in a cornfield owned by the Plymouth County Sherriff's Office, and is used by the nearby Plymouth County Correctional Facility. The 50 m (164 ft) tower is located at 41° 53.018' North, 70° 36.810' West, shown below in Figure 1. The tower base is 34 m (111.5 ft) above sea level.

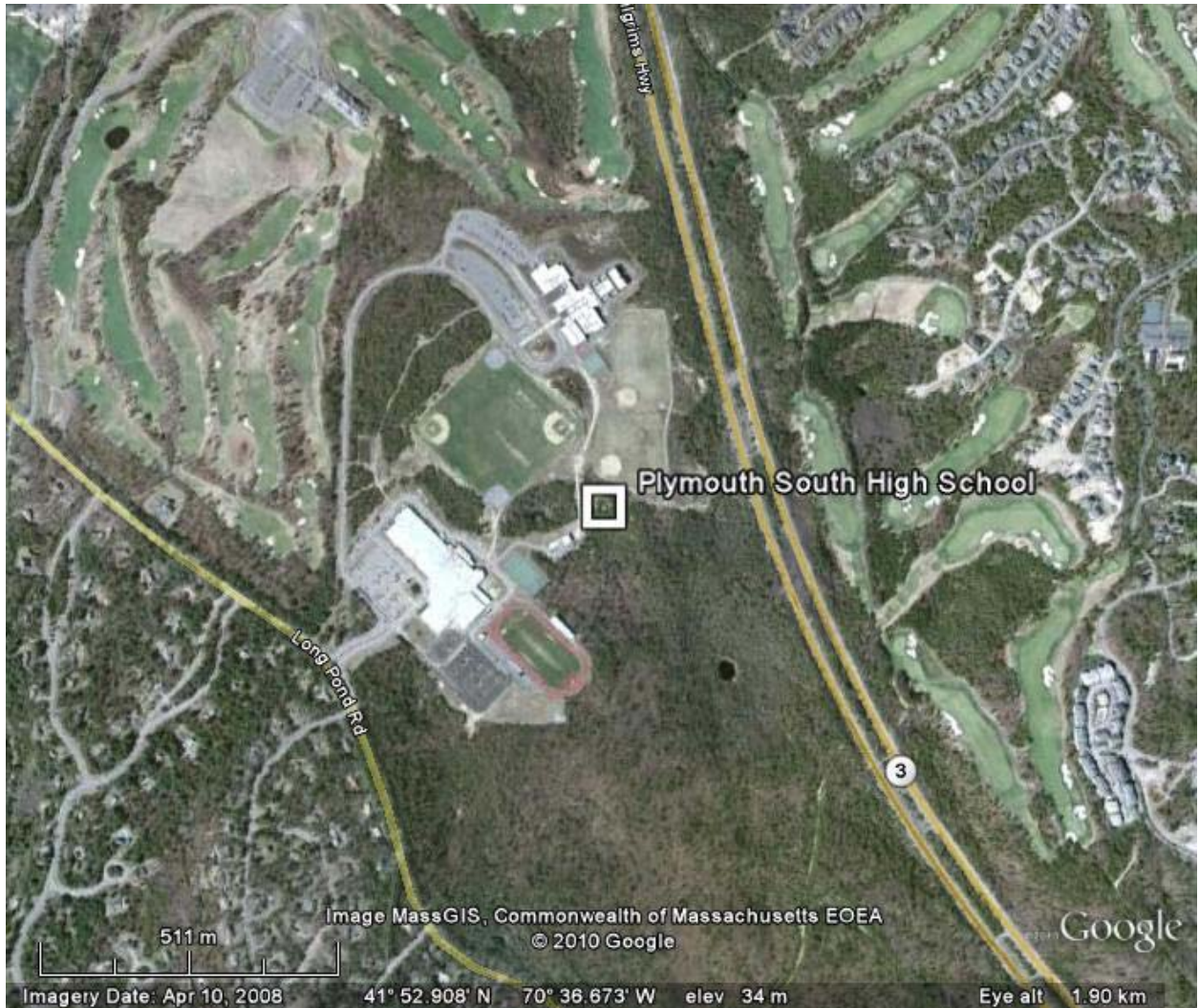


Figure 1 – Site Location

SECTION 2 - Instrumentation and Equipment

The 50 m (164 ft) monitoring tower is supplied by SecondWind, the sensors and logger are supplied by NRG systems. The wind speed and direction were measured at both 38 and 50 m height. The monitoring equipment consists of the following items:

- Symphony Data Logger, serial #3204
- SecondWind 50m tower
- Three Favonius Model A75-104 Anemometers (mfg. by Comptus, Inc.) , standard calibration (Slope 0.765, Offset 0.350)and –one calibrated NRG #40 Anemometer (calibration: slope—0.7652 m/s, offset—0.425 m/s)
- 2-#200P Wind direction vanes
- #110S Temperature sensor (Slope 0.136, Offset -86.383)
- 4- Sensor booms for anemometers, 54” length
- 2- Sensor booms for vanes, 44” length
- Lightning rod and grounding cable
- Shielded sensor wire

The logger samples data from the sensors once every two seconds. These samples are combined into 10-minute averages and are put into a binary file along with the standard deviation for each 10-minute interval. These binary files are stored on a data card that is mailed to the University of Massachusetts, Amherst on a regular basis. Using the NRG software BaseStation®, the binary files are converted into ASCII text files.

SECTION 3- Data Summary

A summary of the wind speeds and wind directions measured during the reporting period is included in Table 1. Table 1 includes the mean wind speeds measured at each measurement height, the maximum instantaneous wind speed measured at each measurement height and the prevailing wind direction measured at each measurement height. These values are provided for each month of the reporting period and for the whole reporting period.

Table 1. Wind Speed and Direction Data Summary

Date	Mean Wind Speed	Max Wind Speed	Prevailing Wind Direction	Mean Wind Speed	Max Wind Speed	Prevailing Wind Direction
Height Units	50 m [m/s]	50 m [m/s]	50 m [-]	38 m [m/s]	38 m [m/s]	38 m [-]
Oct 2010	6.703	15.4	W	6.08	14.2	-
Nov 2010	6.675	14.87	NNE	6.04	14.05	-
Dec 2010	7.006	20.66	WNW	6.26	19.37	-
Oct 2010- Dec 2010	6.794	16.97	NE	6.12	19.37	-

Wind data statistics in the table are reported when more than 90% of the data during the reporting period are valid. In cases when a larger amount of data is missing, the percent of the available data that are used to determine the data statistics is noted.

No measurement of wind speed or direction can be perfectly accurate. Wind speed measurement errors occur due to anemometer manufacturing variability, anemometer calibration errors, the response of anemometers to turbulence and vertical air flow and due to air flows caused by the anemometer mounting system. Every effort is made to reduce the sources of these errors. Nevertheless, the values reported in this report have an expected uncertainty of about $\pm 2\%$ or ± 0.2 m/s, whichever is greater. Wind direction measurement errors occur due to sensor measurement uncertainty, tower effects, boom alignment measurement errors and twisting of pipe sections during the raising of a pipe tower. Efforts are also made to reduce these errors, but the reported wind directions are estimated to have an uncertainty of ± 5 degrees.

A summary of the turbulence intensity and mean wind shear measured at each measurement height during the reporting period is included in Table 2. These values are provided for each month of the reporting period and for the whole reporting period. Turbulence Intensity is calculated by dividing the standard deviation of the wind speed by the mean wind speed and is a measure of the gustiness of a wind resource. Lower turbulence results in lower mechanical loads on a wind turbine. Turbulence intensity varies with wind speed. The average turbulence intensity presented in Table 2 is the mean turbulence intensity when the wind speed at each measurement height is between 10 and 11 m/s.

Shear coefficients provide a measure of the change in wind speed with height. When data at multiple heights are available, shear coefficients, α , have been determined. They can be

used in the following formula to estimate the average wind speed, $U(z)$, at height z , when the average wind speed, $U(z_r)$, at height z_r is known:

$$U(z) = U(z_r) \left(\frac{z}{z_r} \right)^\alpha$$

The change in wind speed with height is a very complicated relationship related to atmospheric conditions, wind speed, wind direction, time of day and time of year. This formula will not always provide the correct answer at any given site. Nevertheless the calculated shear coefficient, based on measurements at two heights, can be used to characterize the degree of increase in wind speed with height at a site.

The mean wind shear coefficient that is provided here is calculated based on the mean wind speeds in Table 1, where z_{high} and z_{low} are the heights of the higher and lower mean wind speeds used in the calculation and $U(z_{low})$ and $U(z_{high})$ are the mean wind speeds at the two heights.

$$\alpha = \log \left(\frac{U(z_{high})}{U(z_{low})} \right) / \log \left(\frac{z_{high}}{z_{low}} \right)$$

Table 2. Shear and Turbulence Intensity Data Summary

Date	Turbulence Intensity at 10 m/s	Turbulence Intensity at 10 m/s	Mean Wind Shear Coefficient, α
Height Units	50 m [-]	38 m [-]	Between 50 m and 38 m [-]
Oct 2010	0.19	0.20	0.36
Nov 2010	0.18	0.20	0.33
Dec 2010	0.18	0.19	0.31
Oct 2007-Dec 2010	0.18	0.20	0.33

SECTION 4- Graphs

This report contains several types of wind data graphs. Unless otherwise noted, each graph represents data from 1 quarter (3 months). The following graphs are included:

- Time Series – 10-minute average wind speeds are plotted against time.
- Wind Speed Distribution – A histogram plot giving the percentage of time that the wind is at a given wind speed.
- Monthly Average – A plot of the monthly average wind speed over a 12-month period. This graph shows the trends in the wind speed over the year.
- Diurnal – A plot of the average wind speed for each hour of the day.
- Turbulence Intensity – A plot of turbulence intensity as a function of wind speed. Turbulence Intensity is calculated as the standard deviation of the wind speed divided by the wind speed and is a measure of the gustiness of a wind resource. Lower turbulence results in lower mechanical loads on a wind turbine.
- Wind Rose – A plot, by compass direction showing the percentage of time that the wind comes from a given direction and the average wind speed in that direction.

As this monitoring tower was installed directly prior to the beginning of this quarter, the monthly averages included are only those of this quarter. The wind speed distribution shows a peak centered between 4 and 5 m/s (9.0 and 11.2 mph). The wind rose shows the dominant prevailing direction to be SSW.

Data for the wind speed histograms, monthly and diurnal average plots, and wind roses are included in APPENDIX B.

Wind Speed Time Series

South Plymouth High School Wind Speed Time Series, 50m - 01-Oct-2010 through 31-Dec-2010

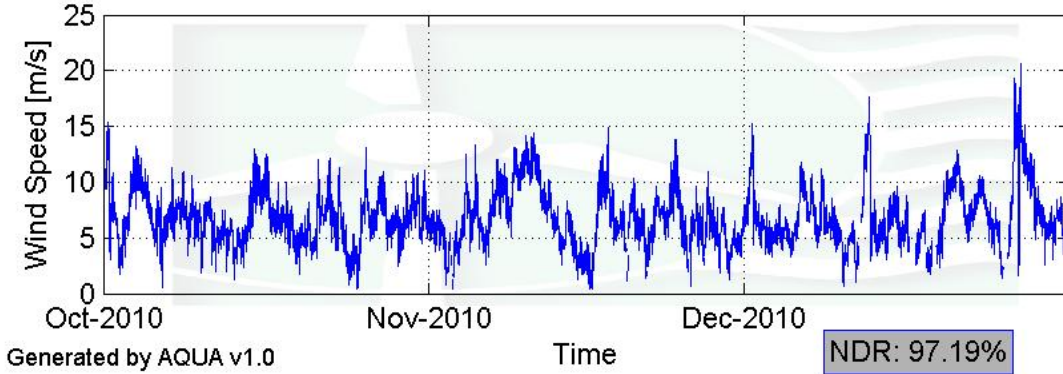


Figure 2 – Wind Speed Time Series, October 2010 - December 2010

Wind Speed Distributions

South Plymouth High School Wind Speed Distribution, 50m - 01-Oct-2010 through 31-Dec-2010

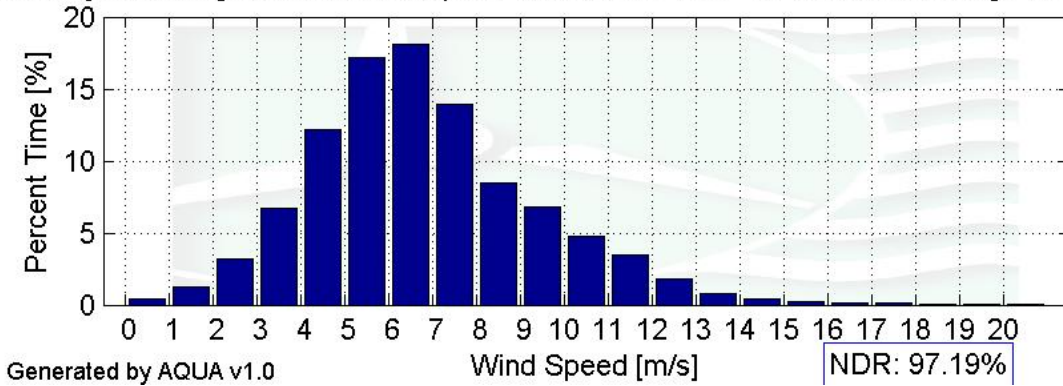


Figure 3 – Wind Speed Distribution, October 2010 - December 2010

Monthly Average Wind Speeds

South Plymouth High School Monthly Average Wind Speed, 50m - 01-Sep-2010 through 31-Dec-20

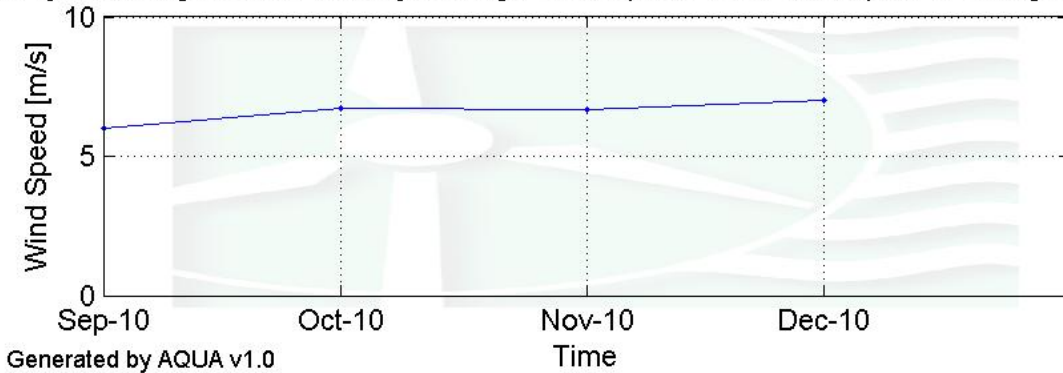


Figure 4 – Monthly Average Wind Speed, September 2010 – December 2010

Diurnal Average Wind Speeds

South Plymouth High School Diurnal Average Wind Speed, 50m - 01-Oct-2010 through 31-Dec-20

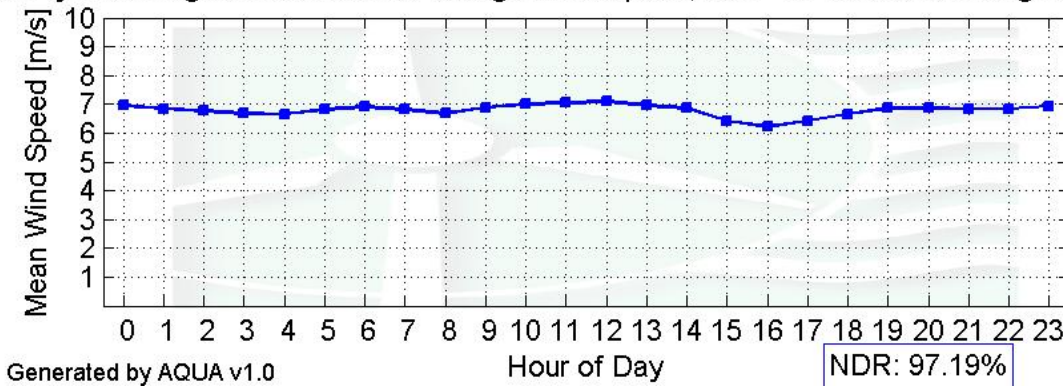


Figure 5 – Diurnal Average Wind Speed, October 2010 - December 2010

Turbulence Intensities

South Plymouth High School Turbulence Intensity, 50m - 01-Oct-2010 through 31-Dec-2010

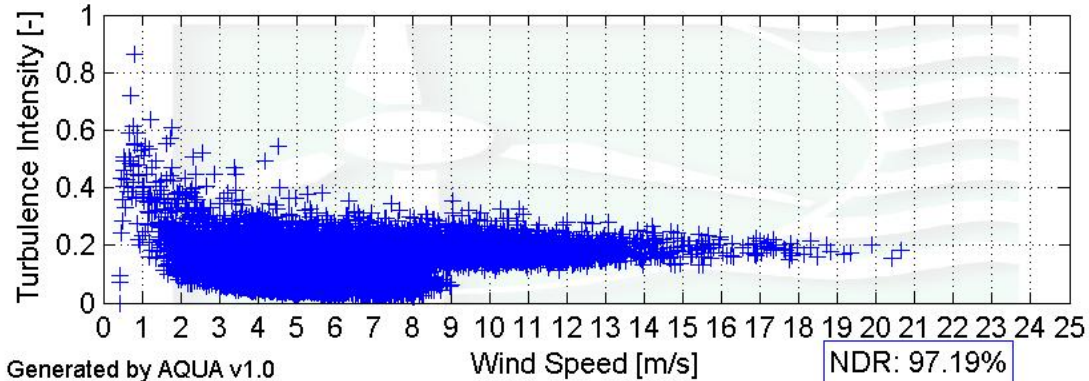
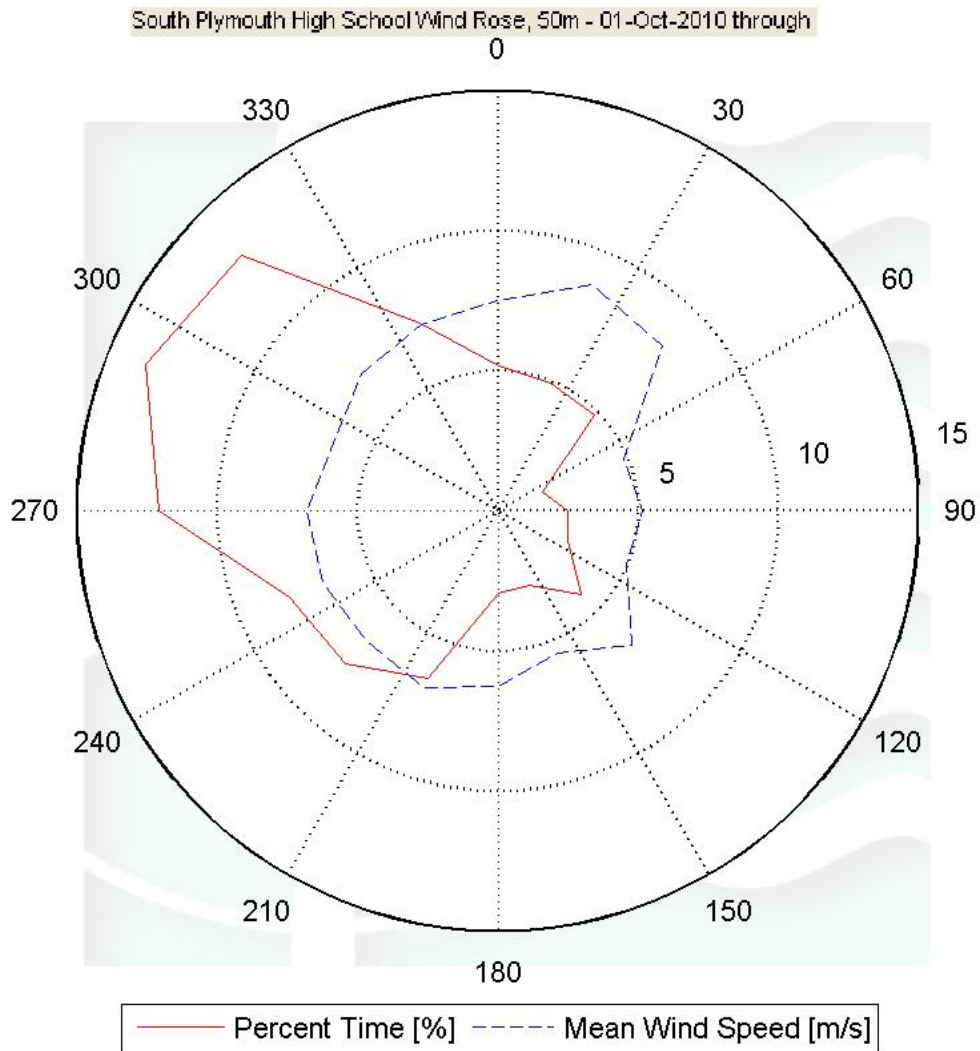


Figure 6 – Turbulence Intensity, October 2010 - December 2010

Wind Roses



Generated by AQUA v1.0

NDR: 97.19%

Figure 7 – Wind Rose, October 2010 - December 2010

SECTION 5 - Significant Meteorological Events

The fourth quarter of 2010 experienced, on average, normal winds and precipitation. There are no major wind events shown in the wind speed time series.

Source: <http://www.erh.noaa.gov/box/MonthlyClimate2.shtml>.

SECTION 6 - Data Collection and Maintenance

The lower vane failed on August 18 and it was determined that the problem was not at the logger. The system is left as is and corrective action will need to be taken if the other vane shows indications of failure.

SECTION 7 - Data Recovery and Validation

All raw wind data are subjected to a series of tests and filters to weed out data that are faulty or corrupted. Definitions of these quality assurance (QA) controls are given below under Test Definitions and Sensor Statistics. These control filters were designed to automate the quality control process and used many of the previous hand-worked data sets made at UMass to affect a suitable emulation. The gross percentage of data recovered (ratio of the number of raw data points received to data points expected) and net percentage (ratio of raw data points which passed all QA control tests to data points expected) are shown below.

Gross Data Recovered [%]	100
Net Data Recovered [%]	85.7

Test Definitions

All raw data were subjected to a series of validation tests, as described below. The sensors tested and the parameters specific to each sensor are given in the Sensor Performance Report which is included in APPENDIX A. Data which were flagged as invalid were not included in the statistics presented in this report.

MinMax Test: All sensors are expected to report data values within a range specified by the sensor and logger manufacturers. If a value falls outside this range, it is flagged as invalid. A data value from the sensor listed in Test Field 1 (TF1) is flagged if it is less than Factor 1 (F1) or greater than Factor 2. This test has been applied to the following sensors (as applicable): wind speed, wind speed standard deviation, wind direction, temperature, and solar insolation.

$$F1 > TF1 > F2$$

MinMaxT Test: This is a MinMax test for wind direction standard deviation with different ranges applied for high and low wind speeds. A wind direction standard deviation data value (TF1) is flagged either if it is less than Factor 1, if the wind speed (TF2) is less than Factor 4 and the wind direction standard deviation is greater than Factor 2, or if the wind speed is greater than or equal to Factor 4 and the wind direction standard deviation is greater than Factor 3.

$$\begin{aligned} & (\text{TF1} < \text{F1}) \\ & \text{or } (\text{TF2} < \text{F4} \text{ and } \text{TF1} > \text{F2}) \\ & \text{or } (\text{TF2} \geq \text{F4} \text{ and } \text{TF1} > \text{F3}) \end{aligned}$$

Icing Test: An icing event occurs when ice collects on a sensor and degrades its performance. Icing events are characterized by the simultaneous measurements of near-zero standard deviation of wind direction, non-zero wind speed, and near- or below-freezing temperatures. Wind speed, wind speed standard deviation, wind direction, and wind direction standard deviation data values are flagged if the wind direction standard deviation (CF1) is less than or equal to Factor 1 (F1), the wind speed (TF1) is greater than Factor 2 (F2), and the temperature (CF2) is less than Factor 3 (F3). To exit an icing event, the wind direction standard deviation must be greater than Factor 4.

$$\text{CF1} \leq \text{F1} \text{ and } \text{TF1} > \text{F2} \text{ and } \text{CF2} < \text{F3}$$

The icing test is suspended for the 38 m station due to the malfunctioning vane.

CompareSensors Test: Where primary and redundant sensors are used, it is possible to determine when one of the sensors is not performing properly. For anemometers, poor performance is characterized by low data values. Therefore, if one sensor of the pair reports values significantly below the other, the low values are flagged. At low wind speeds (Test Fields 1 and 2 less than or equal to Factor 3) wind speed data are flagged if the absolute difference between the two wind speeds is greater than Factor 1. At high wind speeds (Test Fields 1 or 2 greater than Factor 3) wind speed data are flagged if the absolute value of the ratio of the two wind speeds is greater is greater than Factor 2.

$$\begin{aligned} & [\text{TF1} \leq \text{F3} \text{ and } \text{TF2} \leq \text{F3} \text{ and } \text{abs}(\text{TF1} - \text{TF2}) > \text{F1}] \\ & \text{or } [(\text{TF1} > \text{F3} \text{ or } \text{TF2} > \text{F3}) \text{ and } (\text{abs}(1 - \text{TF1} / \text{TF2}) > \text{F2} \text{ or } \text{abs}(1 - \text{TF2} / \text{TF1}) > \text{F2})] \end{aligned}$$

Sensor Statistics

A summary of the results of the data collection and filtering are given in the Sensor Performance Report which is included in APPENDIX A. The following categories of information, tabulated for each sensor, are included in that report.

Expected Data Points: the total number of sample intervals between the start and end dates (inclusive).

Actual Data Points: the total number of data points recorded between the start and end dates.

% Data Recovered: the ratio of actual and expected data points (this is the *gross data recovered percentage*).

Hours Out of Range: total number of hours for which data were flagged according to MinMax and MinMaxT tests. These tests flag data which fall outside of an expected range.

Hours of Icing: total number of hours for which data were flagged according to Icing tests. This test uses the standard deviation of wind direction, air temperature, and wind speed to determine when sensor icing has occurred.

Hours of Fault: total number of hours for which data were flagged according to CompareSensors tests. These tests compare two sensors (e.g. primary and redundant anemometers installed at the same height) and flag data points where one sensor differs significantly from the other.

% Data Good: the filter results are subtracted from the gross data recovery percentage to yield the *net data recovered percentage*.

APPENDIX A - Sensor Performance Report

Test Definitions

Test Order	TestField1	TestField2	TestField3	CalcField1	CalcField2	Calc Field3	TestType	Factor1	Factor2	Factor3	Factor4
1	Etmp2a>T_val						MinMax	-30	60	0	0
2	Etmp2a>T_SD						MinMax	-30	60	0	0
3	Batt2a>V_val						MinMax	10.5	15	0	0
4	Anem38a>WS_val						MinMax	0	90	0	0
5	Anem38a>WS_SD						MinMax	0	4	0	0
6	Anem38b>WS_val						MinMax	0	90	0	0
7	Anem38b>WS_SD						MinMax	0	4	0	0
8	Vane38>WD_val						MinMax	0	360	0	0
9	Vane38>WD_SD						MinMax	0	100	0	0
10	Anem50a>WS_val						MinMax	0	90	0	0
11	Anem50a>WS_SD						MinMax	0	4	0	0
12	Anem50b>WS_val						MinMax	0	90	0	0
13	Anem50b>WS_SD						MinMax	0	4	0	0
14	Vane50>WD_val						MinMax	0	360	0	0
15	Vane50>WD_SD						MinMax	0	100	0	0
16	Anem38b>WS_val	Anem38a>WS_val					Compare Sensors	1	0.25	3	0
17	Anem50a>WS_val	Anem50b>WS_val					Compare Sensors	1	0.25	3	0
18	Anem50a>WS_val	Anem50a>WS_SD	Vane50>WD_val	Vane50>WD_SD	Etmp2a>T_val		Icing	0.5	1	2	4

Sensor Statistics

Sensor	Expected Data Points	Actual Data Points	% Data Recovered	Hours Out of Range	Hours of Icing	Hours of Fault	%Data Good
Etmp2a	13248	13248	100	0	0	0	100
Batt2a	13248	13248	100	0	0	0	100
Anem38a	13248	13248	100	0.333	0 ¹	14.167	99.34
Anem38b	13248	13248	100	0.167	0 ¹	7.333	99.66
Vane38	13248	13248	100	0	0 ¹	2208	0
Anem50a	13248	13248	100	0.167	61.833	63.667	97.11
Anem50b	13248	13248	100	0.167	61.333	46.5	97.89
Vane50	13248	13248	100	0	61.833	0	100
Total	105984	105984	100	0.834	185	2339.7	85.7

¹ Icing test for 38 m suspended due to faulty vane

APPENDIX B - Plot Data

Wind Speed Distribution Data

Bin Center Wind Speed [m/s]	Percent of Time [%]
0.5	0.39
1.5	1.24
2.5	3.18
3.5	6.72
4.5	12.21
5.5	17.18
6.5	18.07
7.5	13.95
8.5	8.47
9.5	6.83
10.5	4.79
11.5	3.49
12.5	1.78
13.5	0.75
14.5	0.38
15.5	0.22
16.5	0.11
17.5	0.16
18.5	0.05
19.5	0.02
20.5	0.02

Monthly Average Wind Speed Data

Month	Average Wind Speed [m/s]
May	5.72
Jun	5.32
Jul	5.31
Aug	5.45
Sep	6.01
Oct	6.7
Nov	6.67
Dec	7.01

Diurnal Average Wind Speed Data

Bin Center Hour	Average Wind Speed [m/s]
0	6.95
1	6.84
2	6.78
3	6.69
4	6.65
5	6.81
6	6.91
7	6.81
8	6.68
9	6.89
10	7.01
11	7.05
12	7.1
13	6.96
14	6.86
15	6.43
16	6.21
17	6.42
18	6.65
19	6.87
20	6.86
21	6.83
22	6.83
23	6.93

Wind Rose Data

Bin Center	Percent Time [%]	Mean Wind Speed [m/s]
0	5.19	7.53
22.5	4.94	8.73
45	4.85	8.32
67.5	1.72	4.84
90	2.48	5.16
112.5	2.69	4.95
135	4.21	6.79
157.5	2.89	5.48
180	2.94	6.29
202.5	6.48	6.86
225	7.7	6.62
247.5	8.05	6.74
270	12.08	6.81
292.5	13.63	6.33
315	12.91	6.9
337.5	7.25	7.19