

# WIND DATA REPORT

## Mt. Tom

January 1, 2011 – March 31, 2011

Prepared for

Massachusetts Clean Energy Center  
55 Summer Street, 9th Floor  
Boston, MA02110

by

Meltem Duran  
James F. Manwell  
Utama Abdulwahid  
Anthony F. Ellis

May 11, 2011

---

WindEnergyCenter  
University of Massachusetts, Amherst  
160 Governors Drive, Amherst, MA01003  
[www.umass.edu/windenergy](http://www.umass.edu/windenergy) • (413) 545-4359 • [rerl@ecs.umass.edu](mailto:rerl@ecs.umass.edu)



## **NOTICE AND ACKNOWLEDGEMENTS**

This report was prepared by the Wind Energy Center (WEC) at the University of Massachusetts, Amherst in the course of performing work sponsored by the Renewable Energy Trust (RET), as administered by the Massachusetts Clean Energy Center (MassCEC). The opinions expressed in this report do not necessarily reflect those of MTC or the Commonwealth of Massachusetts, and reference to any specific product, service, process, or method does not constitute an implied or expressed recommendation or endorsement of it.

Further, MassCEC, the Commonwealth of Massachusetts, and the Wind Energy Center make no warranties or representations, expressed or implied, as to the fitness for particular purpose or merchantability of any product, apparatus, or service, or the usefulness, completeness, or accuracy of any processes, methods or other information contained, described, disclosed, or referred to in this report. MassCEC, the Commonwealth of Massachusetts, and the Wind Energy Center make no representation that the use of any product, apparatus, process, method, or other information will not infringe privately owned rights and will assume no liability for any loss, injury, or damage directly or indirectly resulting from, or occurring in connection with, the use of information contained, described, disclosed, or referred to in this report.

# TABLE OF CONTENTS

Notice and Acknowledgements .....	1
Table of Contents .....	2
Table of Figures .....	3
Executive Summary .....	4
SECTION 1 - Station Location .....	5
SECTION 2 - Instrumentation and Equipment .....	6
SECTION 3 - Data Summary .....	6
SECTION 4 - Graphs .....	8
Wind Speed Time Series .....	9
Wind Speed Distributions .....	9
Monthly Average Wind Speeds .....	10
Diurnal Average Wind Speeds .....	10
Turbulence Intensities .....	10
Wind Roses .....	11
SECTION 5 - Significant Meteorological Events .....	12
SECTION 6 - Data Collection and Maintenance .....	12
SECTION 7 - Data Recovery and Validation .....	12
Test Definitions .....	12
Sensor Statistics .....	13
APPENDIX A - Sensor Performance Report .....	15
Sensor Statistics .....	15
APPENDIX B - Plot Data .....	16
Wind Speed Distribution Data .....	16
Monthly Average Wind Speed Data .....	17
Diurnal Average Wind Speed Data .....	18
Wind Rose Data .....	19

## TABLE OF FIGURES

Figure 1 – Station location of Mt.Tom. ....	5
Figure 2 – Mt. Tom Wind Speed Time Series, 36.6 m, January 1 – March 31, 2011 .....	9
Figure 3 - Mt. Tom Wind Speed Distributions, 36.6 m, January 1 – March 31, 2011 .....	9
Figure 4 – Mt. Tom Monthly Average Wind Speeds, January 1 – March 31, 2011 .....	10
Figure 5 - Mt. Tom Diurnal Average Wind Speed, 36.6 m, January 1 – March 31, 2011 .....	10
Figure 6 - Mt. Tom Turbulence Intensity, 36.6 m, January 1 – March 31, 2011 .....	10
Figure 7 – Mt. Tom Wind Rose, 24.4 m, January 1 – March 31, 2011 .....	11

## EXECUTIVE SUMMARY

All the work presented in this Wind Data Report including installation and decommissioning of the meteorological tower and instrumentation, and the data analysis and reporting was performed by the Wind Energy Center (WEC) at the University of Massachusetts, Amherst.

This wind measurement station is installed on the FAA tower and on the University of Massachusetts wind turbine at Mt. Tom in Holyoke, MA. Installed in December of 1999, the station is in continuous operation to this day. Until December 22, two sets of 3 horizontal anemometers and one wind vane were mounted at 24.4 m (80.0 ft) and 36.6 m (120.0 ft), respectively. One vertical anemometer was mounted each at 18 m (59.1 ft) and 22 m (72.2 ft) on the wind turbine tower at Mt Tom. Also, currently there are two horizontal anemometers at two heights, 24.4 m (80.0 ft) and 36.6 m (120.0 ft) and the vertical anemometers are at the heights of 17 m (55.8 ft) and 19 m (62.3 ft) on the wind turbine.

During the period covered by this report, January 2011 – March 2011, the mean recorded wind speed for this quarter was 7.11 m/s (15.91 mph\*) and the prevailing wind direction was west-northwest. The gross data recovery percentage (the actual percentage of expected data received) was 100% and the net data recovery percentage (the percentage of expected data which passed all of the quality assurance tests) was 73.87%.

Additional information about interpreting the data presented in this report can be found in the Fact Sheet, “Interpreting Your Wind Resource Data,” produced by the Renewable Energy Research Lab (RERL) and the Massachusetts Technology Collaborative (MTC). This document is found through the RERL website:

[http://www.ceere.org/rerl/about\\_wind/RERL\\_Fact\\_Sheet\\_6\\_Wind\\_resource\\_interpretation.pdf](http://www.ceere.org/rerl/about_wind/RERL_Fact_Sheet_6_Wind_resource_interpretation.pdf)

\* 1 m/s = 2.237 mph.

## SECTION 1- Station Location

The Mt. Tom site is located at an existing FAA tower on top of Mt. Tom in Holyoke, MA. Some trees are located in the vicinity, as is an ESI-80 wind turbine. The location of the tower base is at 42° 14' 59.2" N, 72° 38' 42.2" W (NAD 27).

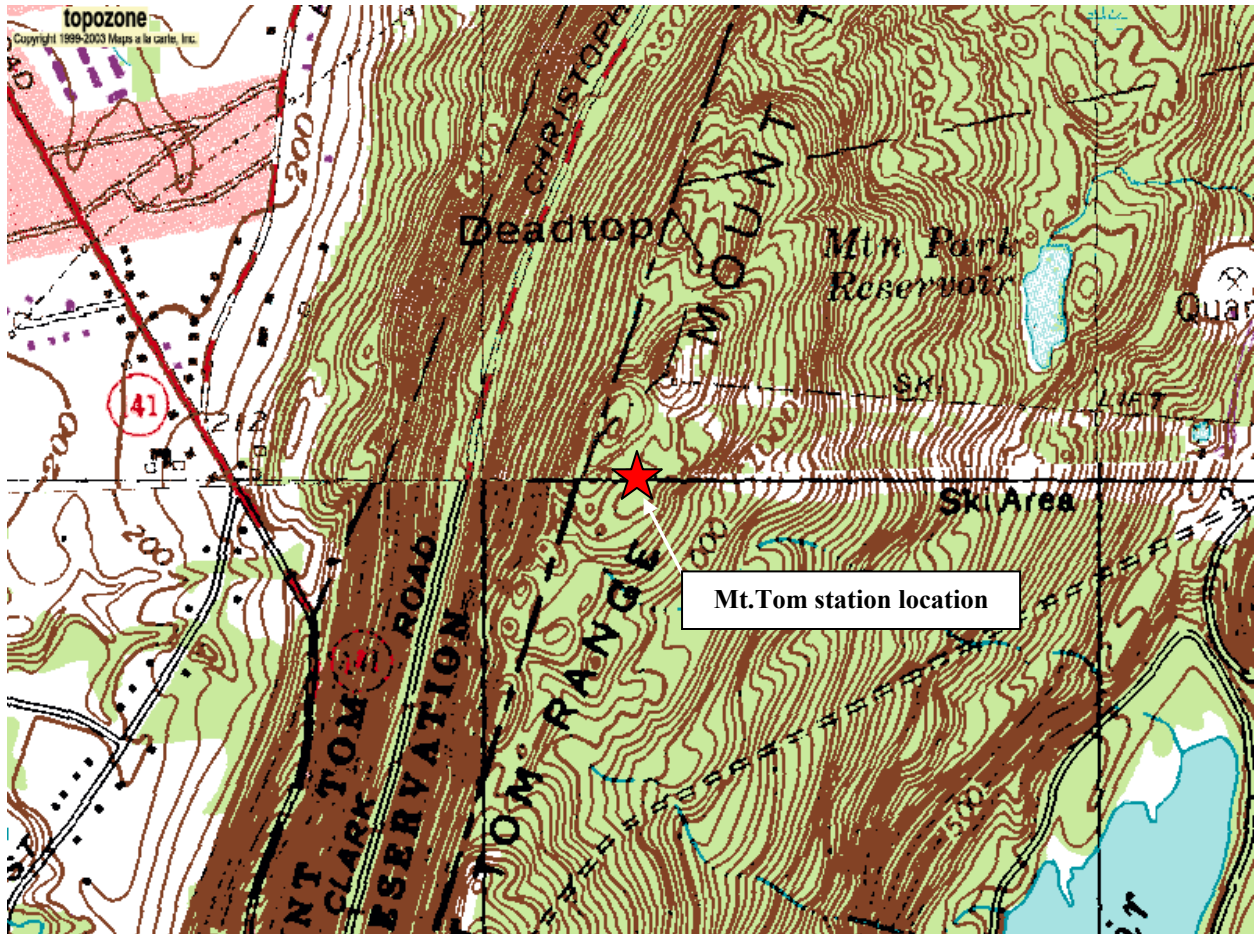


Figure 1 – Station location of Mt. Tom.

[www.topozone.com](http://www.topozone.com)

## SECTION 2- Instrumentation and Equipment

The wind monitoring equipment is mounted on two towers, the first, a 160 ft lattice tower and the second, a 90 ft lattice tower. The wind monitoring equipment was renewed on December and can be listed as follows:

- 1 Nomad Logger, replaced with a SymphoniePLUSLogger within an electrical enclosure box
- 4 - #40 Anemometers, two anemometers are located at both 24.4 m (80.0 ft) and 36.6 m (120.0 ft).
- 2 - Riso P2546A Anemometers, one is located at both 24.4 m (80.0 ft) and 36.6 m (120.0 ft).
- 2 - #200P Wind direction vanes. They are located at at both 24.4 m (80.0 ft) and 36.6 m (120.0 ft).
- 2 -RMYoungRMY27106 Anemometers, one is located at both of 17 m (55.8 ft) and 19 m (62.3 ft). These are the only sensors on the second tower.
- Shielded sensor wire

## SECTION 3- Data Summary

A summary of the wind speeds and wind directions measured during the reporting period is included in Table 1. Table 1 includes the mean wind speeds measured at each measurement height, the maximum instantaneous wind speed measured at each measurement height and the prevailing wind direction measured at each measurement height. These values are provided for each month of the reporting period and for the whole reporting period. Wind data statistics in the table are reported when more than 90% of the data during the reporting period are valid.

**Table 1. Wind Speed and Direction Data Summary**

Date	Mean Wind Speed	Max Wind Speed	Prevailing Wind Direction	Mean Wind Speed	Max Wind Speed	Prevailing Wind Direction
Height Units	36.6 m [m/s]	36.6 m [m/s]	36.6 m [m/s]	24.4 m [m/s]	24.4 m [m/s]	24.4 m [m/s]
Jan 2011	6.64	20.54	-	5.69	18.03	WNW
Feb 2011	7.72*	26.29	-	6.56*	23.45	WNW*
Mar 2011	7.12	22.53	-	6.13	19.40	WNW
<b>Jan 2011 – Mar 2011</b>	<b>7.11**</b>	<b>26.29</b>	<b>-</b>	<b>6.09**</b>	<b>23.45</b>	<b>WNW**</b>

\*78% of data valid

\*\* 88% of data valid

No measurement of wind speed or direction can be perfectly accurate. Wind speed measurement errors occur due to anemometer manufacturing variability, anemometer calibration errors, the response of anemometers to turbulence and vertical air flow and due to air flows caused by the anemometer mounting system. Every effort is made to reduce the sources of these errors. Nevertheless, the values reported in this report have an expected uncertainty of about  $\pm 2\%$  or  $\pm 0.2$  m/s, whichever is greater. Wind direction measurement errors occur due to sensor measurement uncertainty, tower effects, boom alignment measurement errors and twisting of pipe sections during the raising of a pipe tower. Efforts are also made to reduce these errors, but the reported wind directions are estimated to have an uncertainty of  $\pm 5$  degrees.

A summary of the turbulence intensity and mean wind shear measured at each measurement height during the reporting period is included in Table 2. These values are provided for each month of the reporting period and for the whole reporting period. Turbulence Intensity is calculated by dividing the standard deviation of the wind speed by the mean wind speed and is a measure of the gustiness of a wind resource. Lower turbulence results in lower mechanical loads on a wind turbine. Turbulence intensity varies with wind speed. The average turbulence intensity presented in Table 2 is the mean turbulence intensity when the wind speed at each measurement height is between 10 and 11 m/s.

Shear coefficients provide a measure of the change in wind speed with height. When data at multiple heights are available, shear coefficients,  $\alpha$ , have been determined. They can be used in the following formula to estimate the average wind speed,  $U(z)$ , at height  $z$ , when the average wind speed,  $U(z_r)$ , at height  $z_r$  is known:

$$U(z) = U(z_r) \left( \frac{z}{z_r} \right)^\alpha$$

The change in wind speed with height is a very complicated relationship related to atmospheric conditions, wind speed, wind direction, time of day and time of year. This formula will not always provide the correct answer at any given site. Nevertheless the calculated shear coefficient, based on measurements at two heights, can be used to characterize the degree of increase in wind speed with height at a site.

The mean wind shear coefficient that is provided here is calculated based on the mean wind speeds in Table 1, where  $z_{high}$  and  $z_{low}$  are the heights of the higher and lower mean wind speeds used in the calculation and  $U(z_{low})$  and  $U(z_{high})$  are the mean wind speeds at the two heights.

$$\alpha = \log \left( \frac{U(z_{high})}{U(z_{low})} \right) / \log \left( \frac{z_{high}}{z_{low}} \right)$$



**Table 2. Shear and Turbulence Intensity Data Summary**

<b>Date</b>	<b>Turbulence Intensity at 10 m/s</b>	<b>Turbulence Intensity at 10 m/s</b>	<b>Mean Wind Shear Coefficient, <math>\alpha</math></b>
<b>Height Units</b>	<b>36.6 m [-]</b>	<b>24.4 m [-]</b>	<b>Between 36.6 m and 24.4 m [-]</b>
Jan 2011	0.15	0.20	0.36
Feb 2011	0.16*	0.23*	0.46
Mar 2011	0.16	0.21	0.46
<b>Jan 2011 – Mar 2011</b>	<b>0.16**</b>	<b>0.21**</b>	<b>0.43</b>

\*78% of data valid

\*\* 88% of data valid

## SECTION 4- Graphs

This report contains several types of wind data graphs. The following graphs represent data between January 1, 2011 and March 31, 2011. The following graphs are included:

- Time Series – 10-minute average wind speeds are plotted against time.
- Wind Speed Distribution – A histogram plot giving the percentage of time that the wind is at a given wind speed.
- Monthly Average – A plot of the monthly average wind speed over a 12-month period. This graph shows the trends in the wind speed over the year.
- Diurnal – A plot of the average wind speed for each hour of the day.
- Turbulence Intensity – A plot of turbulence intensity as a function of wind speed. Turbulence Intensity is calculated as the standard deviation of the wind speed divided by the wind speed and is a measure of the gustiness of a wind resource. Lower turbulence results in lower mechanical loads on a wind turbine.
- Wind Rose – A plot, by compass direction showing the percentage of time that the wind comes from a given direction and the average wind speed in that direction.

Data for the wind speed histograms, monthly and diurnal average plots, and wind roses are included in APPENDIX B.

### Wind Speed Time Series

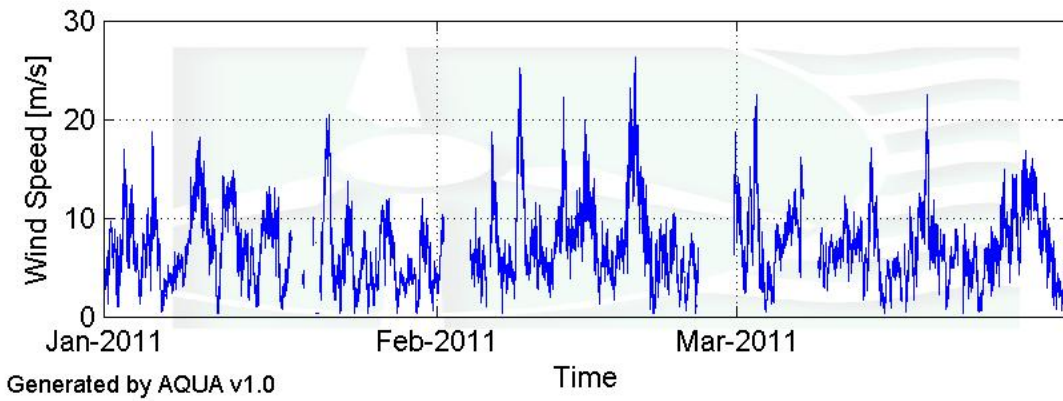


Figure 2 – Mt. Tom Wind Speed Time Series, 36.6 m, January 1 – March 31, 2011

### Wind Speed Distributions

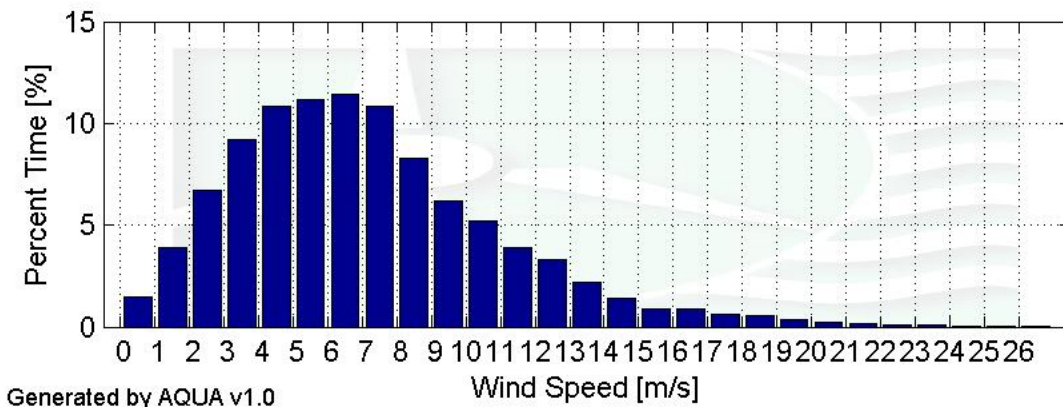


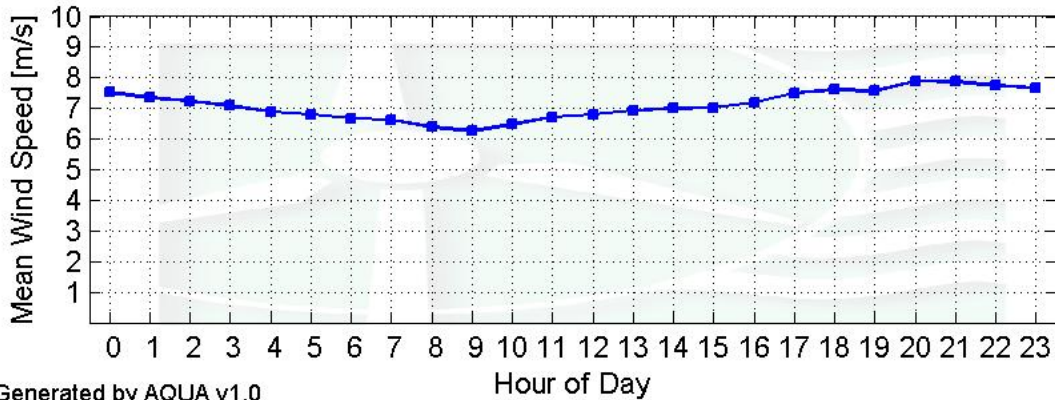
Figure 3 - Mt. Tom Wind Speed Distributions, 36.6 m, January 1 – March 31, 2011

### Monthly Average Wind Speeds



Figure 4 – Mt. Tom Monthly Average Wind Speeds, January 1 – March 31, 2011

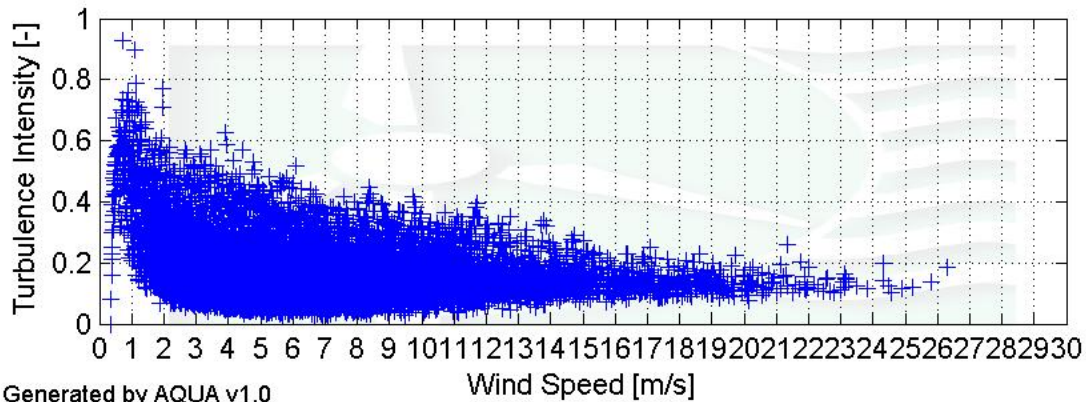
### Diurnal Average Wind Speeds



Generated by AQUA v1.0

Figure 5 - Mt. Tom Diurnal Average Wind Speed, 36.6 m, January 1 – March 31, 2011

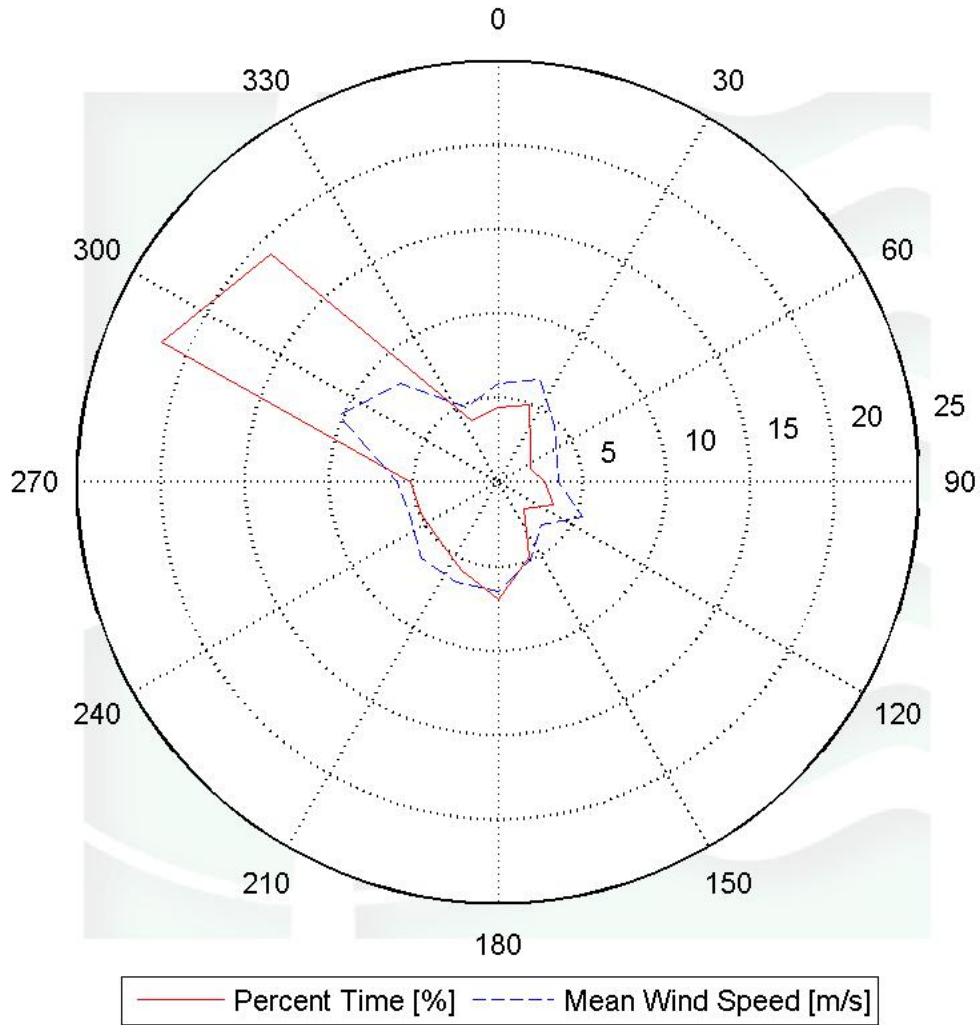
### Turbulence Intensities



Generated by AQUA v1.0

Figure 6 - Mt. Tom Turbulence Intensity, 36.6 m, January 1 – March 31, 2011

## Wind Roses



Generated by AQUA v1.0

**Figure 7 – Mt. Tom Wind Rose, 24.4 m, January 1 – March 31, 2011**

## SECTION 5- Significant Meteorological Events

No significant meteorological events were recorded during the time period of this report.

## SECTION 6- Data Collection and Maintenance

The wind vane at 36.6 m and both the Risoe anemometers are malfunctioning and not reporting any useful data for this period. Data from the 24.4 m vane is used in the icing test for the height of 36.6 m.

## SECTION 7- Data Recovery and Validation

All raw wind data are subjected to a series of tests and filters to weed out data that are faulty or corrupted. Definitions of these quality assurance (QA) controls are given below under Test Definitions and Sensor Statistics. These control filters were designed to automate the quality control process and used many of the previous hand-worked data sets made at UMass to affect a suitable emulation. The gross percentage of data recovered (ratio of the number of raw data points received to data points expected) and net percentage (ratio of raw data points which passed all QA control tests to data points expected) are shown below.

Gross Data Recovered [%]	100
Net Data Recovered [%]	73.87

The low data net recovery is due to the failure of the vane at 36.6 m and the two Risoe anemometers.

### Test Definitions

All raw data were subjected to a series of validation tests, as described below. The sensors tested and the parameters specific to each sensor are given in the Sensor Performance Report which is included in APPENDIX A. Data which were flagged as invalid were not included in the statistics presented in this report.

**MinMax Test:** All sensors are expected to report data values within a range specified by the sensor and logger manufacturers. If a value falls outside this range, it is flagged as invalid. A data value from the sensor listed in Test Field 1 (TF1) is flagged if it is less than Factor 1 (F1) or greater than Factor 2. This test has been applied to the following sensors (as applicable): wind speed, wind speed standard deviation, wind direction, temperature, and solar insolation.

$$F1 > TF1 > F2$$

**MinMaxT Test:** This is a MinMax test for wind direction standard deviation with different ranges applied for high and low wind speeds. A wind direction standard deviation data value (TF1) is flagged either if it is less than Factor 1, if the wind speed (TF2) is less than Factor 4 and the wind direction standard deviation is greater than Factor 2, or if the wind speed is greater than or equal to Factor 4 and the wind direction standard deviation is greater than Factor 3.

$$\begin{aligned} & (\text{TF1} < \text{F1}) \\ & \text{or } (\text{TF2} < \text{F4} \text{ and } \text{TF1} > \text{F2}) \\ & \text{or } (\text{TF2} \geq \text{F4} \text{ and } \text{TF1} > \text{F3}) \end{aligned}$$

**Icing Test:** An icing event occurs when ice collects on a sensor and degrades its performance. Icing events are characterized by the simultaneous measurements of near-zero standard deviation of wind direction, non-zero wind speed, and near- or below-freezing temperatures. Wind speed, wind speed standard deviation, wind direction, and wind direction standard deviation data values are flagged if the wind direction standard deviation (CF1) is less than or equal to Factor 1 (F1), the wind speed (TF1) is greater than Factor 2 (F2), and the temperature (CF2) is less than Factor 3 (F3). To exit an icing event, the wind direction standard deviation must be greater than Factor 4.

$$\text{CF1} \leq \text{F1} \text{ and } \text{TF1} > \text{F2} \text{ and } \text{CF2} < \text{F3}$$

**CompareSensors Test:** Where primary and redundant sensors are used, it is possible to determine when one of the sensors is not performing properly. For anemometers, poor performance is characterized by low data values. Therefore, if one sensor of the pair reports values significantly below the other, the low values are flagged. At low wind speeds (Test Fields 1 and 2 less than or equal to Factor 3) wind speed data are flagged if the absolute difference between the two wind speeds is greater than Factor 1. At high wind speeds (Test Fields 1 or 2 greater than Factor 3) wind speed data are flagged if the absolute value of the ratio of the two wind speeds is greater is greater than Factor 2.

$$\begin{aligned} & [ \text{TF1} \leq \text{F3} \text{ and } \text{TF2} \leq \text{F3} \text{ and } \text{abs}(\text{TF1} - \text{TF2}) > \text{F1} ] \\ & \text{or } [ (\text{TF1} > \text{F3} \text{ or } \text{TF2} > \text{F3}) \text{ and } (\text{abs}(1 - \text{TF1} / \text{TF2}) > \text{F2} \text{ or } \text{abs}(1 - \text{TF2} / \text{TF1}) > \text{F2}) ] \end{aligned}$$

### Sensor Statistics

A summary of the results of the data collection and filtering are given in the Sensor Performance Report which is included in APPENDIX A. The following categories of information, tabulated for each sensor, are included in that report.

**Expected Data Points:** the total number of sample intervals between the start and end dates (inclusive).

**Actual Data Points:** the total number of data points recorded between the start and end dates.

**% Data Recovered:** the ratio of actual and expected data points (this is the *gross data recovered percentage*).

**Hours Out of Range:** total number of hours for which data were flagged according to MinMax and MinMaxT tests. These tests flag data which fall outside of an expected range.

**Hours of Icing:** total number of hours for which data were flagged according to Icing tests. This test uses the standard deviation of wind direction, air temperature, and wind speed to determine when sensor icing has occurred.

**Hours of Fault:** total number of hours for which data were flagged according to CompareSensors tests. These tests compare two sensors (e.g. primary and redundant anemometers installed at the same height) and flag data points where one sensor differs significantly from the other.

**% Data Good:** the filter results are subtracted from the gross data recovery percentage to yield the *net data recovered percentage*.

## APPENDIX A- Sensor Performance Report

### Sensor Statistics

Sensor	Expected Data Points	Actual Data Points	% Data Recovered	Hours Out of Range	Hours of Icing	Hours of Fault	%Data Good
ETemp	12960	12960	100	84.5	0	0	96.09
VertAnem17	12960	12960	100	0	0	0	96.10
VertAnem19	12960	12960	100	0	0	0	96.10
Anem24W	12960	12960	100	0	253	20.17	87.65
Anem24WSW	12960	12960	100	0	248.67	0	88.49
Anem24WNW_Riso	12960	12960	100	0	0	2160	0
Vane24	12960	12960	100	0	253.5	0	88.26
Anem37W	12960	12960	100	0	221.5	90.67	86.63
Anem37WSW	12960	12960	100	0	253.67	86.17	85.02
Anem37WNW_Riso	12960	12960	100	0	0	2160	0
Vane37	12960	12960	100	0	253.67	0	88.26
<b>Total</b>	<b>155520</b>	<b>155520</b>	<b>100</b>	<b>85</b>	<b>1484</b>	<b>4517</b>	<b>73.87</b>



## APPENDIX B- Plot Data

### Wind Speed Distribution Data

<b>Bin Center Wind Speed [m/s]</b>	<b>Percent of Time [%]</b>
0.5	1.47
1.5	3.93
2.5	6.74
3.5	9.21
4.5	10.87
5.5	11.15
6.5	11.4
7.5	10.82
8.5	8.27
9.5	6.18
10.5	5.19
11.5	3.92
12.5	3.33
13.5	2.18
14.5	1.41
15.5	0.91
16.5	0.86
17.5	0.63
18.5	0.58
19.5	0.34
20.5	0.25
21.5	0.14
22.5	0.08
23.5	0.08
24.5	0.04
25.5	0.02
26.5	0.01

### Monthly Average Wind Speed Data

<b>Month</b>	<b>Mean Wind Speed  [m/s]</b>
Aug-09	4.7
Sep-09	5.4
Oct-09	6.3
Nov-09	6.6
Dec-09	8.4
Jan-10	7.7
Feb-10	8.1
Mar-10	7.2
Apr-10	6.2
May-10	6.0
Jun-10	5.6
Jul-10	5.6
Aug-10	5.4
Sep-10	NaN
Oct-10	7.2
Nov-10	6.7
Dec-10	8.6
Jan-11	6.6
Feb-11	7.7
Mar-11	7.1

### **Diurnal Average Wind Speed Data**

<b>Hour of Day</b>	<b>Mean Wind Speed [m/s]</b>
0	7.53
1	7.34
2	7.23
3	7.08
4	6.9
5	6.79
6	6.68
7	6.62
8	6.39
9	6.25
10	6.47
11	6.72
12	6.8
13	6.94
14	6.99
15	7.03
16	7.19
17	7.5
18	7.6
19	7.56
20	7.89
21	7.86
22	7.74
23	7.68

### Wind Rose Data

<b>Direction</b>	<b>Percent Time [%]</b>	<b>Mean Wind Speed [m/s]</b>
N	4.47	5.84
NNE	4.94	6.62
NE	2.74	4.74
ENE	2.06	3.82
E	2.78	3.63
ESE	3.53	5.43
SE	2.2	3.6
SSE	4.83	4.97
S	7	6.53
SSW	5.67	6.42
SW	4.89	6.42
WSW	4.92	5.62
W	5.22	5.96
WNW	21.67	10.26
NW	19.12	8.26
NNW	3.94	4.79