



Renewable Energy Research Laboratory

Department of Mechanical and Industrial Engineering
University of Massachusetts
160 Governor's Drive
Amherst, MA 01003-9265

Phone: 413-545-4359
Fax: 413-577-1301
www.ceere.org/rerl
rerl@ecs.umass.edu



Data Update for Mt. Tom, Holyoke, MA April 2007

Prepared for
Massachusetts Technology Collaborative
75 North Drive, Westborough, MA 01581

By Puneet Malhotra

Monthly Data Summary for April 2007

This update summarizes the monthly data results for the Mt. Tom monitoring site in Holyoke, MA, at 42° 14' 59.2" N, 72° 38' 42.2" W (NAD83). More information on the sensors and site, including the data, can be found at http://www.ceere.org/rerl/rerl_resourcedata.html.

Height	Wind Speed			Prevailing Wind Direction	Power Law Shear Exponent
	Mean [m/s]	Max [m/s]	Turbulence Intensity		
24 m	5.53	19.46	0.24	180° S	0.31
37 m	6.32	22.49	0.19	202.5° SSW	

Data Recovery

All raw wind data are subjected to a series of tests and filters to identify data that are faulty or corrupted. The gross percentage of data recovered (ratio of the number of raw data points received to data points expected) and net data recovered (ratio of raw data points which passed all QA control tests to data points expected) are shown below.

Gross Data Recovered [%]	100
Net Data Recovered [%]	90.236

The net data recovery percentage is less than 100% due to icing conditions and fault in one of the anemometer sensors at a height of 37m.



Renewable Energy Research Laboratory

Department of Mechanical and Industrial Engineering
University of Massachusetts
160 Governor's Drive
Amherst, MA 01003-9265

Phone: 413-545-4359
Fax: 413-577-1301
www.ceere.org/rerl
rerl@ecs.umass.edu



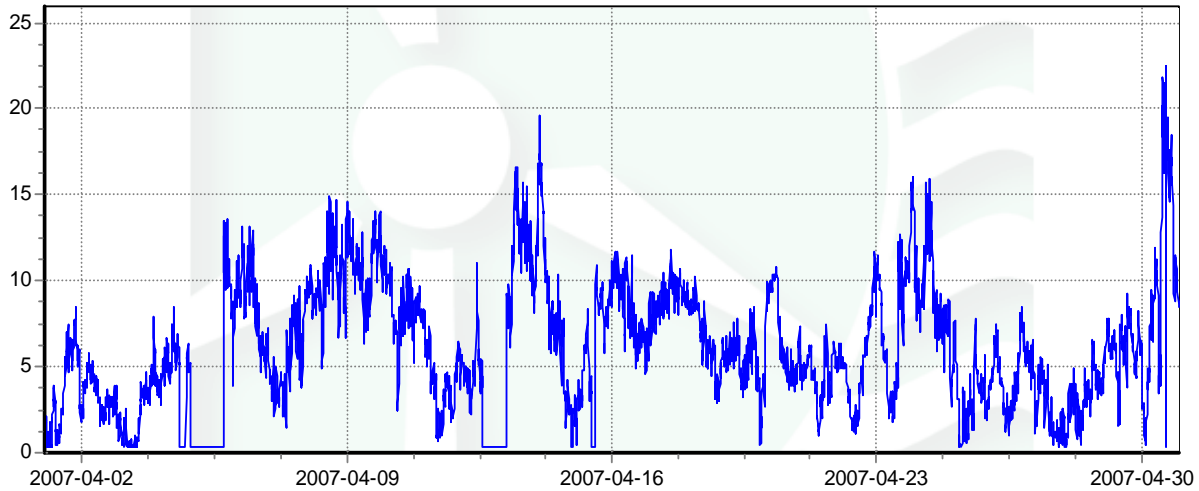
Maintenance Issues and Changes to Site Configuration

No maintenance issues arose during the month of April.

Monthly Data Time Series

Seen below is a graph of wind speed at Mt. Tom for the month of April 2007, at the anemometer height of 37 m.

Mt Tom Wind Speed Time Series, 37m



Plot by DQMS3 - dqms@dqms.com