



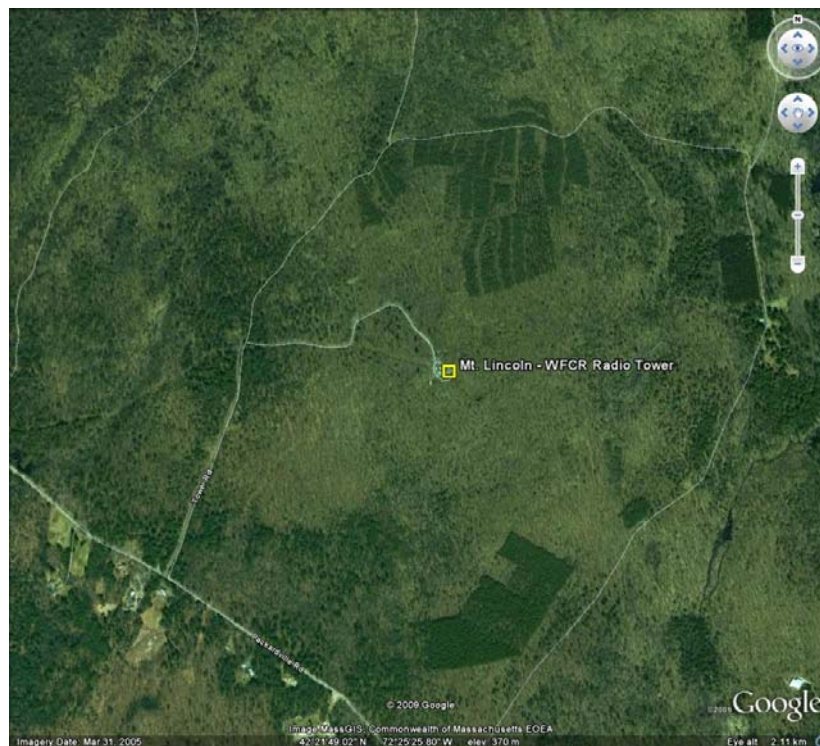
**Data Update for Mt. Lincoln, Pelham MA
May 2009**

Prepared for
Massachusetts Technology Collaborative
75 North Drive, Westborough, MA 01581
By Jonathan Black

Monthly Data Summary for May 2009

Site Description

This update summarizes monthly data results for the Mt. Lincoln monitoring site in Pelham, MA, at 42° 21' 49.56" North, 72° 25' 22.80". The wind monitoring equipment is mounted on an existing radio tower known as the WFCR broadcast tower, and is seen in the picture below.



Tower and Sensors

Three anemometers and one wind vane are mounted at each of the two measurement heights, 65 m (213.3 ft) and 86 m (282.2 ft). More information on the sensors and site will be forthcoming in subsequent quarterly Wind Data Reports generated for the Mt. Lincoln site.

Data Summary Statistics

A summary of the data during the reporting period are included in the following table. The wind shear power law exponent is based on the mean wind speeds during the measurement period. For more information on wind shear and turbulence intensity, see: <http://www.ceere.org/rerl/publications/published/communityWindFactSheets/>.

Height	Wind Speed			Prevailing Wind Direction	Wind Shear Power Law Exponent
	Mean [m/s]	Max [m/s]	Mean Turbulence Intensity at 10 m/s		
86 m	6.539	18.17	0.123	225, SW	0.219
65 m	6.150	17.43	0.133	202.5, SSW	

Data Recovery

All raw wind data are subjected to a series of tests and filters to identify data that are faulty or corrupted. The gross percentage of data recovered (ratio of the number of raw data points received to data points expected) and net data recovered (ratio of raw data points which passed all QA control tests to data points expected) are shown below.

Gross Data Recovered [%]	100.00
Net Data Recovered [%]	99.72

Information on the tests and filters will be forthcoming in subsequent quarterly site documents.

Maintenance Issues and Changes to Site Configuration

No maintenance issues were encountered in the month of May 2009.

Monthly Data Time Series

Below is a graph of wind speed at the Mt. Lincoln site for the month of May 2009 at a height of 86m.

