

WIND DATA REPORT

Mass Turnpike Authority Blandford, MA

April 2011 – June 2011

Prepared for

Massachusetts Clean Energy Center
55 Summer Street, 9th Floor
Boston, MA 02110

by

Eric Morgan
James F. Manwell
Utama Abdulwahid
Anthony F. Ellis

August 19, 2011

Report template version 3.1.2

Wind Energy Center
University of Massachusetts, Amherst
160 Governors Drive, Amherst, MA 01003
www.umass.edu/windenergy • (413) 545-4359 • rerl@ecs.umass.edu



NOTICE AND ACKNOWLEDGEMENTS

This report was prepared by the Wind Energy Center (WEC) at the University of Massachusetts, Amherst in the course of performing work sponsored by the Renewable Energy Trust (RET), as administered by the Massachusetts Clean Energy Center (MassCEC). The opinions expressed in this report do not necessarily reflect those of MassCEC or the Commonwealth of Massachusetts, and reference to any specific product, service, process, or method does not constitute an implied or expressed recommendation or endorsement of it.

Further, MassCEC, the Commonwealth of Massachusetts, and the Wind Energy Center make no warranties or representations, expressed or implied, as to the fitness for particular purpose or merchantability of any product, apparatus, or service, or the usefulness, completeness, or accuracy of any processes, methods or other information contained, described, disclosed, or referred to in this report. MassCEC, the Commonwealth of Massachusetts, and the Wind Energy Center make no representation that the use of any product, apparatus, process, method, or other information will not infringe privately owned rights and will assume no liability for any loss, injury, or damage directly or indirectly resulting from, or occurring in connection with, the use of information contained, described, disclosed, or referred to in this report.

TABLE OF CONTENTS

| | |
|---|----|
| Notice and Acknowledgements | 1 |
| Table of Contents | 2 |
| Table of Figures | 3 |
| Executive Summary | 4 |
| SECTION 1 - Station Location..... | 5 |
| SECTION 2 - Instrumentation and Equipment..... | 5 |
| SECTION 3 - Data Summary | 6 |
| SECTION 4 - Graphs..... | 8 |
| Wind Speed Time Series..... | 9 |
| Wind Speed Distributions | 9 |
| Monthly Average Wind Speeds | 10 |
| Diurnal Average Wind Speeds..... | 10 |
| Turbulence Intensities | 11 |
| Wind Roses | 12 |
| SECTION 5 - Significant Meteorological Events | 13 |
| SECTION 6 - Data Collection and Maintenance..... | 13 |
| SECTION 7 - Data Recovery and Validation..... | 13 |
| Test Definitions..... | 13 |
| Sensor Statistics | 14 |
| APPENDIX A - Sensor Performance Report | 16 |
| Test Definitions..... | 16 |
| Sensor Statistics | 16 |
| APPENDIX B - Plot Data..... | 17 |
| Distribution Data..... | 17 |
| Monthly Average Wind Speed Data | 17 |
| Diurnal Average Wind Speed Data..... | 18 |
| Wind Rose Data | 19 |

TABLE OF FIGURES

| | |
|---|----|
| Figure 1 – Site Location..... | 5 |
| Figure 2 - Wind Speed Time Series, April – June 2011 | 9 |
| Figure 3 – Wind Speed Distribution, April – June 2011 | 9 |
| Figure 4 – Monthly Average Wind Speed, April 2010 – June 2011 | 10 |
| Figure 5 – Diurnal Average Wind Speed, April – June 2011 | 10 |
| Figure 6 – Turbulence Intensity, April – June 2011 | 11 |
| Figure 7 – Wind Rose, April – June 2011 | 12 |

EXECUTIVE SUMMARY

All the work presented in this Wind Data Report including installation and decommissioning of the meteorological tower and instrumentation, and the data analysis and reporting was performed by the Wind Energy Center (WEC) at the University of Massachusetts, Amherst.

Two anemometers and one wind vane are mounted each at the 60 m (197 ft) tower height and at the 40 m (131 ft) tower height. A temperature sensor was installed near the base of the tower.

This report summarizes the wind data collected during the spring of 2011, between April and June. The mean recorded wind speed was 5.04 m/s (11.27 mph*) at 60 meters, and the prevailing wind direction was from the west-northwest. The average wind shear component was 0.45 and the average turbulence intensity at 60 meters was 0.21.

The gross data recovery percentage (the actual percentage of expected data received) was 100% and the net data recovery percentage (the percentage of expected data which passed all of the quality assurance tests) was 98.203%.

Additional information about interpreting the data presented in this report can be found in the Fact Sheet, "Interpreting Your Wind Resource Data," produced by the Wind Energy Center (WEC) and the Massachusetts Technology Collaborative (MTC). This document is found through the RERL website:

http://www.ceere.org/rerl/about_wind/RERL_Fact_Sheet_6_Wind_resource_interpretation.pdf

* 1 m/s = 2.237 mph.

SECTION 1 - Station Location

This update summarizes the quarterly data results for the Blandford monitoring site in Blandford, MA, at 42.223° N, 72.968° W (NAD 27). The site is located on the MTA tower in Blandford, MA. The picture below shows the location of the tower, with the red circle indicating the location of the tower base.

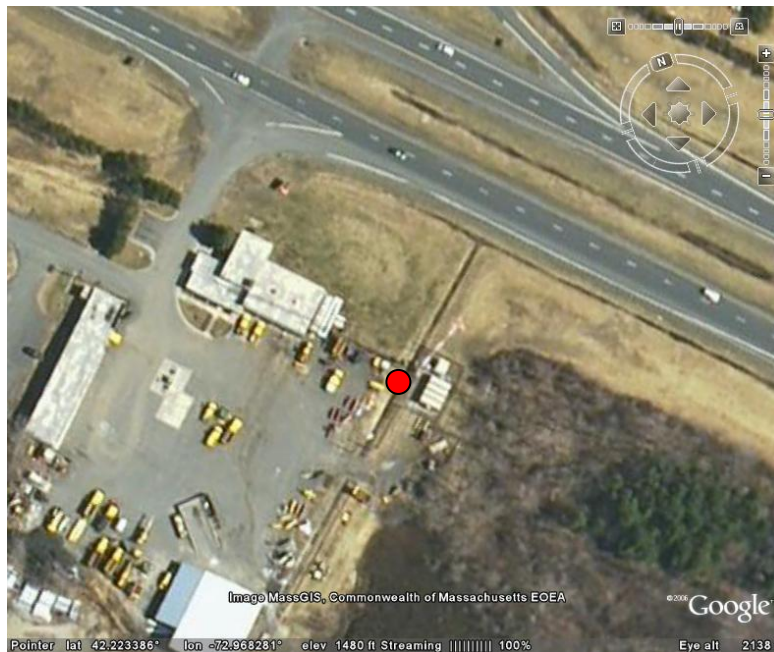


Figure 1 – Site Location

SECTION 2 - Instrumentation and Equipment

The wind monitoring equipment is mounted on an 80 m (262 ft) lattice communications tower. The wind monitoring equipment comes from several vendors and consists of the following items:

- NRG Symphonie data logger and I-pack cellular modem
- 1 – Second Wind C3 anemometer, std calibration (Slope – 0.765 m/s, offset – 0.35 m/s) located at 60 m (196.85 ft)
- 1 – NRG Max 40 anemometer, std calibration (Slope – 0.765 m/s, offset – 0.35 m/s) located at 40m (131.2 ft)
- 1 – Risoe P2546A calibrated cup anemometer located at 60 m (164 ft) (Slope 0.62 m/s, offset 0.27 m/s)
- 1 – RM Young 05103 propeller anemometer and vane located at 40 m (131.2 ft)

- 1 – NRG #200P Wind direction vane. The vane is located at 60 m (196.85 ft)
- NRG 110S temperature sensor located near the base of the tower

SECTION 3- Data Summary

A summary of the wind speeds and wind directions measured during the reporting period is included in Table 1. Table 1 includes the mean wind speeds measured at each measurement height, the maximum instantaneous wind speed measured at each measurement height and the prevailing wind direction measured at each measurement height. These values are provided for each month of the reporting period and for the whole reporting period.

Table 1. Wind Speed and Direction Data Summary

| Date | Mean Wind Speed | Max Wind Speed | Prevailing Wind Direction | Mean Wind Speed | Max Wind Speed | Prevailing Wind Direction |
|------------------------------|-----------------|----------------|---------------------------|-----------------|----------------|---------------------------|
| Height Units | 60 m [m/s] | 60 m [m/s] | 60 m [m/s] | 40 m [m/s] | 40 m [m/s] | 40 m [m/s] |
| April 2011 | 5.74 | 16.68 | WSW | 4.84 | 14.96 | WNW |
| May 2011 | 4.92 | 13.51 | S | 4.08 | 11.45 | S |
| Jun 2011 | 4.47 | 15.61 | WNW | 3.66 | 13.25 | WNW |
| April 2011 - Jun 2011 | 5.04 | 16.68 | WNW | 4.19 | 14.96 | WNW |

Wind data statistics in the table are reported when more than 90% of the data during the reporting period are valid. In cases when a large amount of data is missing, the percent of the available data that is used to determine the data statistics is noted.

No measurement of wind speed or direction can be perfectly accurate. Wind speed measurement errors occur due to anemometer manufacturing variability, anemometer calibration errors, the response of anemometers to turbulence and vertical air flow and due to air flows caused by the anemometer mounting system. Every effort is made to reduce the sources of these errors. Nevertheless, the values reported in this report have an expected uncertainty of about $\pm 2\%$ or ± 0.2 m/s, whichever is greater. Wind direction measurement errors occur due to sensor measurement uncertainty, tower effects, boom alignment measurement errors and twisting of pipe sections during the raising of a pipe tower. Efforts are also made to reduce these errors, but the reported wind directions are estimated to have an uncertainty of ± 5 degrees.

A summary of the turbulence intensity and mean wind shear measured at each measurement height during the reporting period is included in Table 2. These values are provided for each month of the reporting period and for the whole reporting period. Turbulence Intensity is calculated by dividing the standard deviation of the wind speed by the mean wind speed and is a measure of the gustiness of a wind resource. Lower turbulence results in lower mechanical loads on a wind turbine. Turbulence intensity varies with wind speed. The average turbulence intensity presented in Table 2 is the mean turbulence intensity when the wind speed at each measurement height is between 10 and 11 m/s.

Shear coefficients provide a measure of the change in wind speed with height. When data at multiple heights are available, shear coefficients, α , have been determined. They can be used in the following formula to estimate the average wind speed, $U(z)$, at height z , when the average wind speed, $U(z_r)$, at height z_r is known:

$$U(z) = U(z_r) \left(\frac{z}{z_r} \right)^\alpha$$

The change in wind speed with height is a very complicated relationship related to atmospheric conditions, wind speed, wind direction, time of day and time of year. This formula will not always provide the correct answer at any given site. Nevertheless the calculated shear coefficient, based on measurements at two heights, can be used to characterize the degree of increase in wind speed with height at a site.

The mean wind shear coefficient that is provided here is calculated based on the mean wind speeds in Table 1, where z_{high} and z_{low} are the heights of the higher and lower mean wind speeds used in the calculation and $U(z_{low})$ and $U(z_{high})$ are the mean wind speeds at the two heights.

$$\alpha = \log \left(\frac{U(z_{high})}{U(z_{low})} \right) / \log \left(\frac{z_{high}}{z_{low}} \right)$$

Table 2. Shear and Turbulence Intensity Data Summary

| Date | Turbulence Intensity at 10 m/s | Turbulence Intensity at 40 m/s | Mean Wind Shear Coefficient, α Between 60 m and 40 m |
|--------------|--------------------------------|--------------------------------|---|
| Height Units | 60 m [-] | 40 m [-] | 60 m and 40 m [-] |
| April 2011 | 0.21 | 0.22 | 0.425 |
| Feb 2011 | 0.20 | 0.22 | 0.458 |

| | | | |
|-----------------------------|--------------|-------------|--------------|
| Mar 2011 | 0.21 | 0.24 | 0.491 |
| April 2011 -Mar 2011 | 0.207 | 0.23 | 0.455 |

SECTION 4- Graphs

This report contains several types of wind data graphs. Unless otherwise noted, each graph represents data from 1 quarter (3 months). The following graphs are included:

- Time Series – 10-minute average wind speeds are plotted against time.
- Wind Speed Distribution – A histogram plot giving the percentage of time that the wind is at a given wind speed.
- Monthly Average – A plot of the monthly average wind speed over a 12-month period. This graph shows the trends in the wind speed over the year.
- Diurnal – A plot of the average wind speed for each hour of the day.
- Turbulence Intensity – A plot of turbulence intensity as a function of wind speed. Turbulence Intensity is calculated as the standard deviation of the wind speed divided by the wind speed and is a measure of the gustiness of a wind resource. Lower turbulence results in lower mechanical loads on a wind turbine.
- Wind Rose – A plot, by compass direction showing the percentage of time that the wind comes from a given direction and the average wind speed in that direction.

Data for the wind speed histograms, monthly and diurnal average plots, and wind roses are included in APPENDIX B.

Wind Speed Time Series

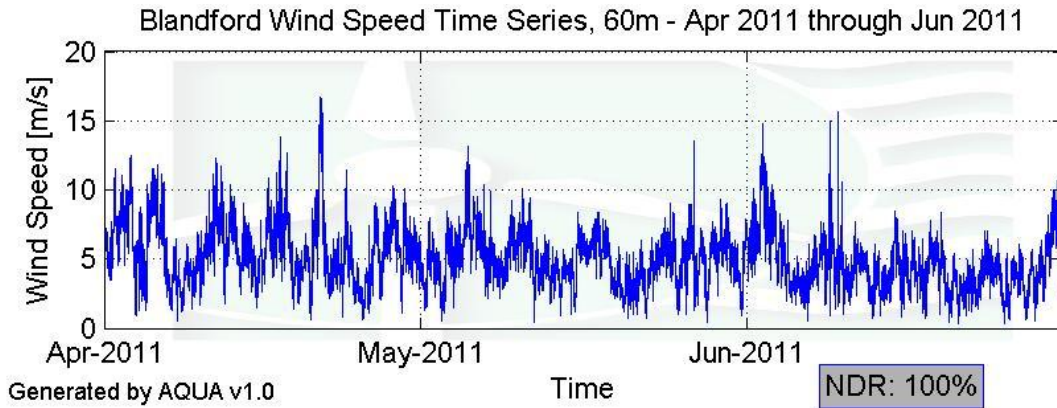


Figure 2 - Wind Speed Time Series, April – June 2011

Wind Speed Distributions

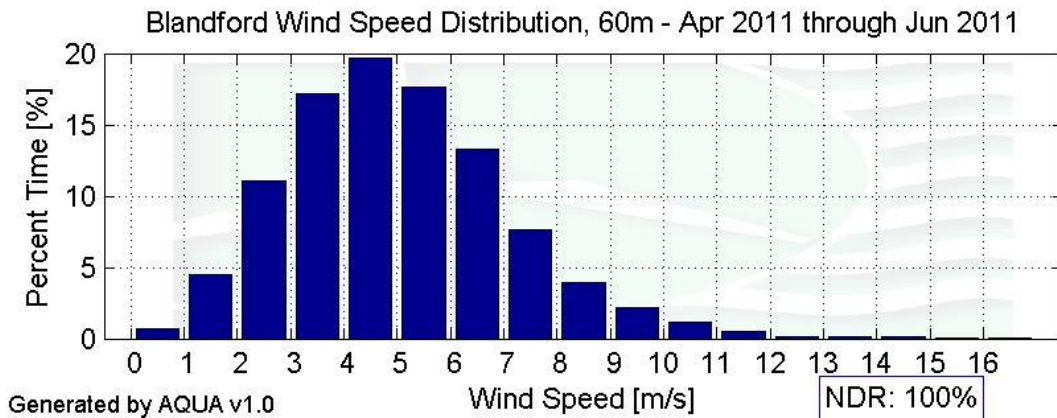


Figure 3 – Wind Speed Distribution, April – June 2011

Monthly Average Wind Speeds

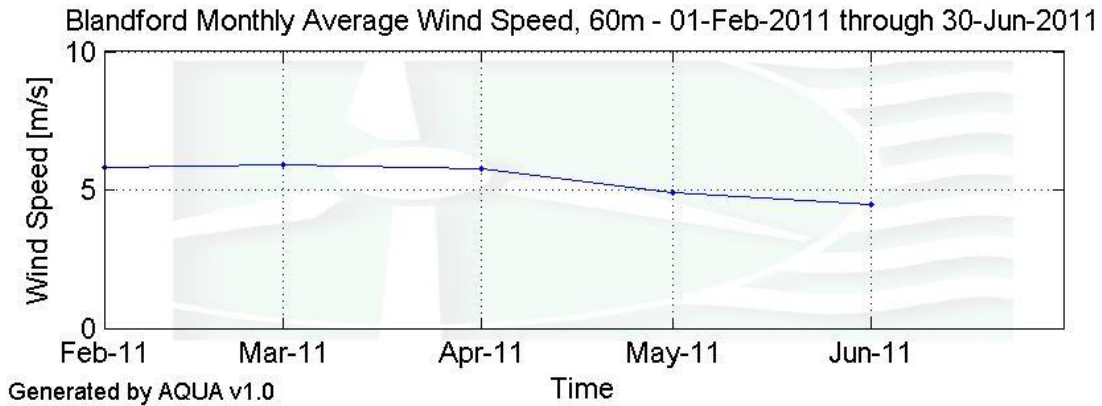


Figure 4 – Monthly Average Wind Speed, April 2010 – June 2011

Diurnal Average Wind Speeds

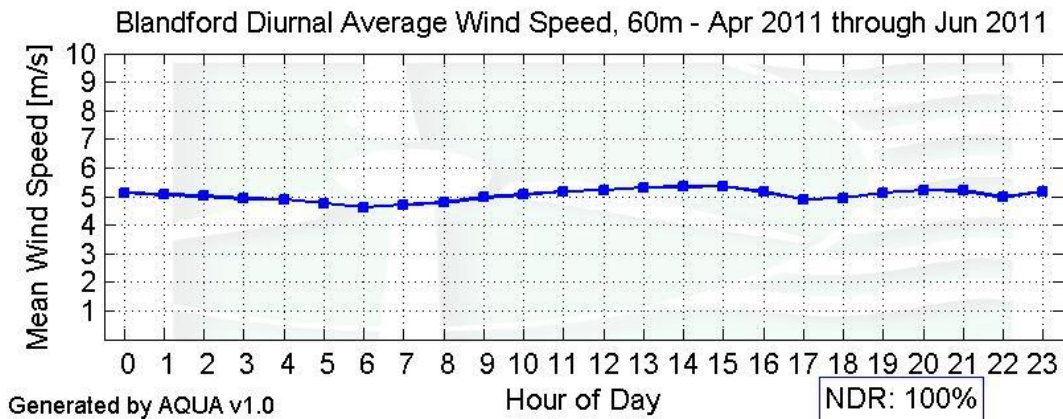


Figure 5 – Diurnal Average Wind Speed, April – June 2011

Turbulence Intensities

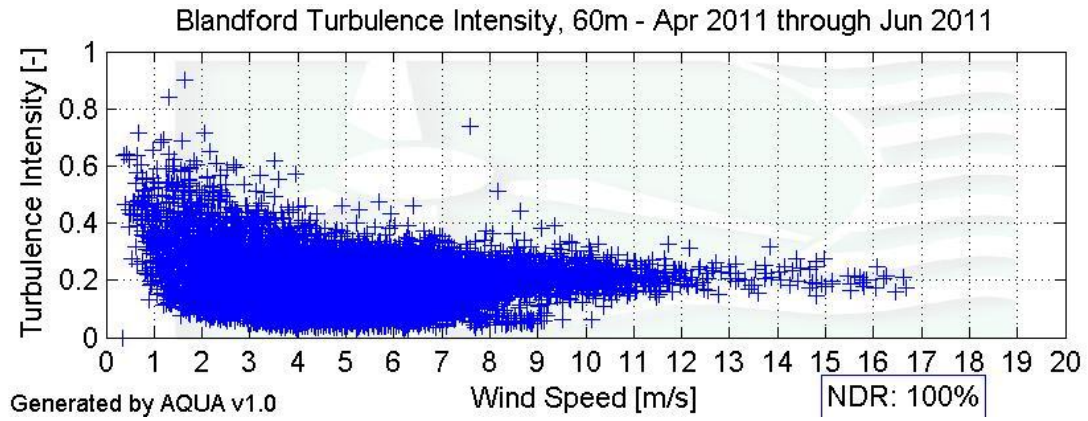
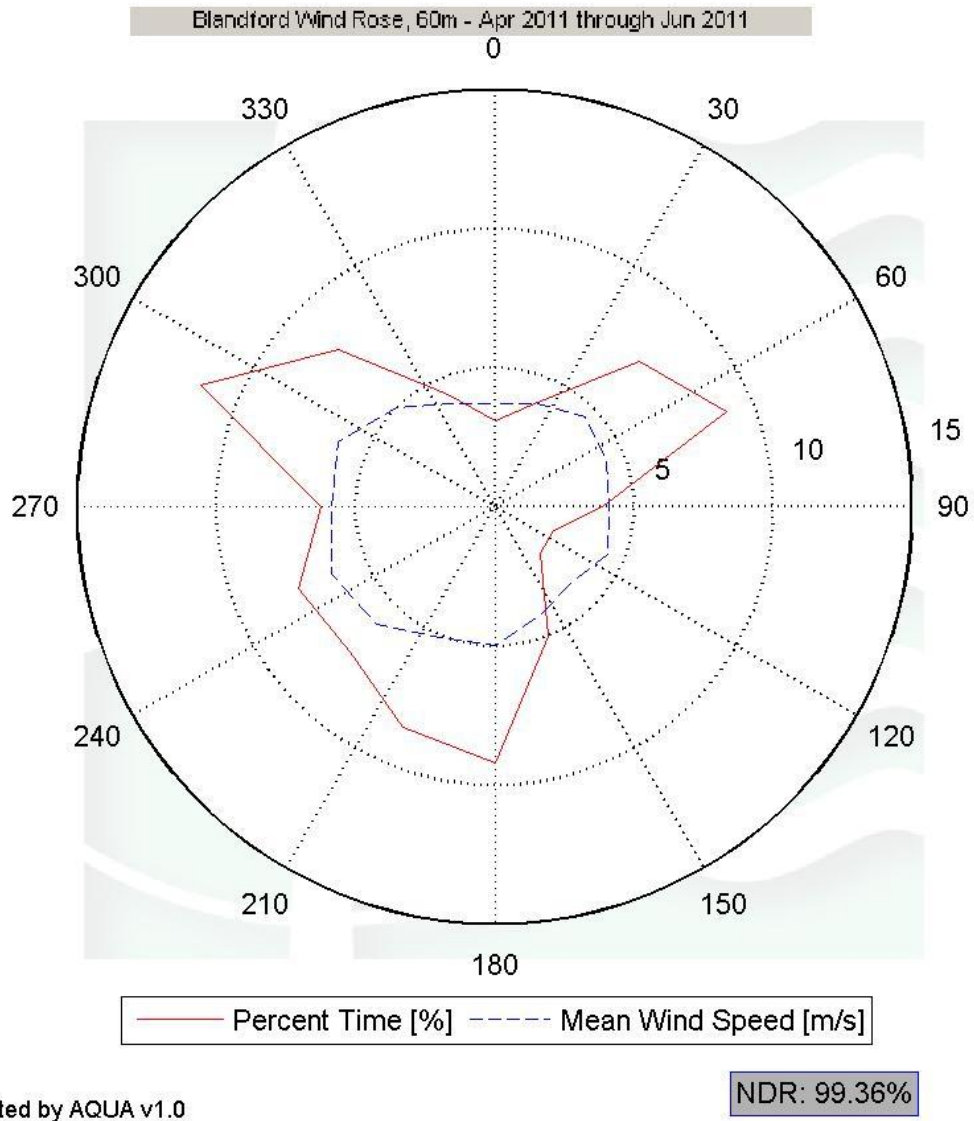


Figure 6 – Turbulence Intensity, April – June 2011

Wind Roses



Generated by AQUA v1.0

NDR: 99.36%

Figure 7 – Wind Rose, April – June 2011

SECTION 5 - Significant Meteorological Events

There were no extreme metrological events during this data collection period.

SECTION 6 - Data Collection and Maintenance

There was no maintenance done at this facility during this data collection period.

SECTION 7 - Data Recovery and Validation

All raw wind data are subjected to a series of tests and filters to weed out data that are faulty or corrupted. Definitions of these quality assurance (QA) controls are given below under Test Definitions and Sensor Statistics. These control filters were designed to automate the quality control process and used many of the previous hand-worked data sets made at UMass to affect a suitable emulation. The gross percentage of data recovered (ratio of the number of raw data points received to data points expected) and net percentage (ratio of raw data points which passed all QA control tests to data points expected) are shown below.

| | |
|--------------------------|----------|
| Gross Data Recovered [%] | 100 % |
| Net Data Recovered [%] | 98.203 % |

Test Definitions

All raw data were subjected to a series of validation tests, as described below. The sensors tested and the parameters specific to each sensor are given in the Sensor Performance Report which is included in APPENDIX A. Data which were flagged as invalid were not included in the statistics presented in this report.

MinMax Test: All sensors are expected to report data values within a range specified by the sensor and logger manufacturers. If a value falls outside this range, it is flagged as invalid. A data value from the sensor listed in Test Field 1 (TF1) is flagged if it is less than Factor 1 (F1) or greater than Factor 2. This test has been applied to the following sensors (as applicable): wind speed, wind speed standard deviation, wind direction, temperature, and solar insolation.

$$F1 > TF1 > F2$$

MinMaxT Test: This is a MinMax test for wind direction standard deviation with different ranges applied for high and low wind speeds. A wind direction standard deviation data value (TF1) is flagged either if it is less than Factor 1, if the wind speed (TF2) is less than Factor 4 and the wind direction standard deviation is greater than

Factor 2, or if the wind speed is greater than or equal to Factor 4 and the wind direction standard deviation is greater than Factor 3.

$$\begin{aligned} &(\text{TF1} < \text{F1}) \\ &\text{or } (\text{TF2} < \text{F4} \text{ and } \text{TF1} > \text{F2}) \\ &\text{or } (\text{TF2} \geq \text{F4} \text{ and } \text{TF1} > \text{F3}) \end{aligned}$$

Icing Test: An icing event occurs when ice collects on a sensor and degrades its performance. Icing events are characterized by the simultaneous measurements of near-zero standard deviation of wind direction, non-zero wind speed, and near- or below-freezing temperatures. Wind speed, wind speed standard deviation, wind direction, and wind direction standard deviation data values are flagged if the wind direction standard deviation (CF1) is less than or equal to Factor 1 (F1), the wind speed (TF1) is greater than Factor 2 (F2), and the temperature (CF2) is less than Factor 3 (F3). To exit an icing event, the wind direction standard deviation must be greater than Factor 4.

$$\text{CF1} \leq \text{F1} \text{ and } \text{TF1} > \text{F2} \text{ and } \text{CF2} < \text{F3}$$

CompareSensors Test: Where primary and redundant sensors are used, it is possible to determine when one of the sensors is not performing properly. For anemometers, poor performance is characterized by low data values. Therefore, if one sensor of the pair reports values significantly below the other, the low values are flagged. At low wind speeds (Test Fields 1 and 2 less than or equal to Factor 3) wind speed data are flagged if the absolute difference between the two wind speeds is greater than Factor 1. At high wind speeds (Test Fields 1 or 2 greater than Factor 3) wind speed data are flagged if the absolute value of the ratio of the two wind speeds is greater than Factor 2.

$$\begin{aligned} &[\text{TF1} \leq \text{F3} \text{ and } \text{TF2} \leq \text{F3} \text{ and } \text{abs}(\text{TF1} - \text{TF2}) > \text{F1}] \\ &\text{or } [(\text{TF1} > \text{F3} \text{ or } \text{TF2} > \text{F3}) \text{ and } (\text{abs}(1 - \text{TF1} / \text{TF2}) > \text{F2} \text{ or } \text{abs}(1 - \text{TF2} / \text{TF1}) > \text{F2})] \end{aligned}$$

Sensor Statistics

A summary of the results of the data collection and filtering are given in the Sensor Performance Report which is included in APPENDIX A. The following categories of information, tabulated for each sensor, are included in that report.

Expected Data Points: the total number of sample intervals between the start and end dates (inclusive).

Actual Data Points: the total number of data points recorded between the start and end dates.

% Data Recovered: the ratio of actual and expected data points (this is the *gross data recovered percentage*).

Hours Out of Range: total number of hours for which data were flagged according to MinMax and MinMaxT tests. These tests flag data which fall outside of an expected range.

Hours of Icing: total number of hours for which data were flagged according to Icing tests. This test uses the standard deviation of wind direction, air temperature, and wind speed to determine when sensor icing has occurred.

Hours of Fault: total number of hours for which data were flagged according to CompareSensors tests. These tests compare two sensors (e.g. primary and redundant anemometers installed at the same height) and flag data points where one sensor differs significantly from the other.

% Data Good: the filter results are subtracted from the gross data recovery percentage to yield the *net data recovered percentage*.

APPENDIX A - Sensor Performance Report

Test Definitions

Blandford Test Definitions

| TestOrder | TestField1 | TestField2 | TestField3 | CalcField1 | CalcField2 | CalcField3 | TestType | Factor1 | Factor2 | Factor3 | Factor4 |
|-----------|------------------|------------------|------------------|-----------------|------------------|------------|----------------|---------|---------|---------|---------|
| 1 | Channel 4>WS_max | | | | | | MinMax | 0 | 50 | 0 | 0 |
| 2 | Channel 6>WS_max | | | | | | MinMax | 0 | 50 | 0 | 0 |
| 3 | Channel 5>WS_max | | | | | | MinMax | 0 | 50 | 0 | 0 |
| 4 | Channel 2>WS_max | | | | | | MinMax | 0 | 50 | 0 | 0 |
| 5 | Channel 4>WS_val | Channel 6>WS_val | | | | | CompareSensors | 1 | 0.25 | 3 | 0 |
| 6 | Channel 4>WS_val | Channel 4>WS_SD | Channel 8>WD_val | Channel 8>WD_SD | Channel 10>T_val | | Icing | 0.5 | 1 | 2 | 4 |
| 7 | Channel 6>WS_val | Channel 6>WS_SD | Channel 8>WD_val | Channel 8>WD_SD | Channel 10>T_val | | Icing | 0.5 | 1 | 2 | 4 |
| 8 | Channel 2>WS_val | Channel 2>WS_SD | Channel 7>WD_val | Channel 7>WD_SD | Channel 10>T_val | | Icing | 0.5 | 1 | 2 | 4 |

Sensor Statistics

Blandford Sensor Statistics
Apr 2011 through Jun 2011

| | Expected Data Points | Actual Data Points | % Data Recovered | Hours Out of Range | Hours of Icing | Hours of Fault | %Data Good |
|------------|----------------------|--------------------|------------------|--------------------|----------------|----------------|------------|
| Channel 10 | 13104 | 13104 | 100 | 0 | 0 | 0 | 100 |
| Channel 11 | 13104 | 13104 | 100 | 0 | 0 | 0 | 100 |
| Channel 4 | 13104 | 13104 | 100 | 0 | 0 | 75.167 | 96.558 |
| Channel 8 | 13104 | 13104 | 100 | 0 | 0 | 0 | 100 |
| Channel 6 | 13104 | 13104 | 100 | 0 | 0 | 210.833 | 90.346 |
| Channel 7 | 13104 | 13104 | 100 | 0 | 14 | 0 | 99.359 |
| Channel 5 | 13104 | 13104 | 100 | 0 | 0 | 0 | 100 |
| Channel 2 | 13104 | 13104 | 100 | 0 | 14 | 0 | 99.359 |
| Total | 104832 | 104832 | 100 | 0 | 28 | 286 | 98.203 |

APPENDIX B - Plot Data

Distribution Data

| Bin Center [m/s] | Percent Time [%] |
|------------------|------------------|
| 0.5 | 0.65 |
| 1.5 | 4.49 |
| 2.5 | 11.02 |
| 3.5 | 17.19 |
| 4.5 | 19.7 |
| 5.5 | 17.64 |
| 6.5 | 13.32 |
| 7.5 | 7.61 |
| 8.5 | 3.94 |
| 9.5 | 2.15 |
| 10.5 | 1.17 |
| 11.5 | 0.55 |
| 12.5 | 0.18 |
| 13.5 | 0.14 |
| 14.5 | 0.13 |
| 15.5 | 0.09 |
| 16.5 | 0.05 |

Monthly Average Wind Speed Data

| Month | Mean Wind Speed [m/s] |
|--------|-------------------------|
| Jul-10 | 5 |
| Aug-10 | 4.963 |
| Sep-10 | 5.495 |
| Oct-10 | 6.064 |
| Nov-10 | 5.345 |
| Dec-10 | 6.931 |
| Jan-11 | 4.94 |
| Feb-11 | 5.834 |
| Mar-11 | 5.93 |
| Apr-11 | 5.743 |
| May-11 | 4.917 |
| Jun-11 | 4.471 |

Diurnal Average Wind Speed Data

| Hour of Day | Mean Wind Speed [m/s] |
|-------------|-----------------------|
| 0 | 5.14 |
| 1 | 5.07 |
| 2 | 5 |
| 3 | 4.92 |
| 4 | 4.9 |
| 5 | 4.76 |
| 6 | 4.63 |
| 7 | 4.72 |
| 8 | 4.79 |
| 9 | 4.96 |
| 10 | 5.06 |
| 11 | 5.17 |
| 12 | 5.22 |
| 13 | 5.31 |
| 14 | 5.34 |
| 15 | 5.36 |
| 16 | 5.16 |
| 17 | 4.9 |
| 18 | 4.94 |
| 19 | 5.13 |
| 20 | 5.22 |
| 21 | 5.2 |
| 22 | 4.96 |
| 23 | 5.17 |

Wind Rose Data

| Bin Center [deg] | Percent Time [%] | Mean Wind Speed [m/s] |
|------------------|------------------|-----------------------|
| 0 | 3.07 | 3.73 |
| 22.5 | 4.06 | 3.99 |
| 45 | 7.38 | 4.59 |
| 67.5 | 9 | 4.35 |
| 90 | 3.89 | 4.1 |
| 112.5 | 2.3 | 4.42 |
| 135 | 2.33 | 3.87 |
| 157.5 | 5.02 | 4.24 |
| 180 | 9.24 | 4.97 |
| 202.5 | 8.61 | 5.11 |
| 225 | 7.39 | 5.99 |
| 247.5 | 7.66 | 6.34 |
| 270 | 6.24 | 5.86 |
| 292.5 | 11.45 | 6.11 |
| 315 | 7.96 | 5.03 |
| 337.5 | 4.39 | 4.02 |