



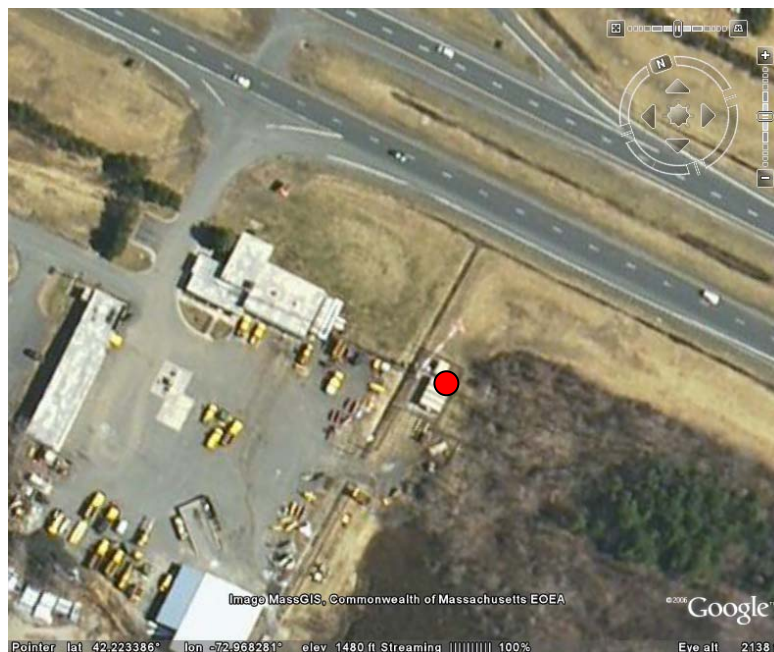
**Data Update for Blandford, MA  
September, 2010**

Prepared for  
Massachusetts Clean Energy Center, 55 Summer Street, 9th Floor, Boston, MA 02110  
By Eric Morgan

**Monthly Data Summary for September, 2010**

**Site Description**

This update summarizes the monthly data results for the Blandford monitoring site in Blandford, MA, at 42.223° N, 72.968° W (NAD 27). The site is located on the MTA tower in Blandford, MA. The picture below shows the location of the tower, with the red circle indicating the location of the tower base.



**Tower and Sensors**

Three anemometers and one wind vane are mounted at the 60 m (197 ft) tower height and one anemometer and one wind vane are mounted at the 40 m (131 ft) tower height. More information on the sensors and site can be found at [http://www.ceere.org/rerl/rerl\\_resourcedata.html](http://www.ceere.org/rerl/rerl_resourcedata.html).

**Data Summary Statistics**

A summary of the data during the reporting period are included in the following table. The wind shear power law exponent is based on the mean wind speeds during the measurement period. For more information on wind shear and turbulence intensity, see: <http://www.ceere.org/rerl/publications/published/communityWindFactSheets/>.

Height	Wind Speed			Prevailing Wind Direction	Wind Shear Power Law Exponent
	Mean [m/s]	Max [m/s]	Mean Turbulence Intensity at 10 m/s		
60 m	5.50	14.19	0.191	225, SW	0.52
40 m	4.44	11.35	0.191	225, SW	

The data can be found at the Renewable Energy Research Laboratory web site: [http://www.ceere.org/rerl/rerl\\_resourcedata.html](http://www.ceere.org/rerl/rerl_resourcedata.html).

**Data Recovery**

All raw wind data are subjected to a series of tests and filters to identify data that are faulty or corrupted. The gross percentage of data recovered (ratio of the number of raw data points received to data points expected) and net data recovered (ratio of raw data points which passed all QA control tests to data points expected) are shown below.

Gross Data Recovered [%]	100
Net Data Recovered [%]	98.99

Information on the tests and filters used can be found at the Renewable Energy Research Laboratory web site: [http://www.ceere.org/rerl/rerl\\_resourcedata.html](http://www.ceere.org/rerl/rerl_resourcedata.html).

**Maintenance Issues and Changes to Site Configuration**

No maintenance or changes were made to the site in this month.

**Monthly Data Time Series**

Below is a graph of wind speed at Blandford for the month of September, 2010 at the height of 60m.

