



# Renewable Energy Research Laboratory

Department of Mechanical and Industrial Engineering  
University of Massachusetts  
160 Governor's Drive  
Amherst, MA 01003-9265

Phone: 413-545-4359  
Fax: 413-577-1301  
www.ceere.org/rel  
rerl@ecs.umass.edu



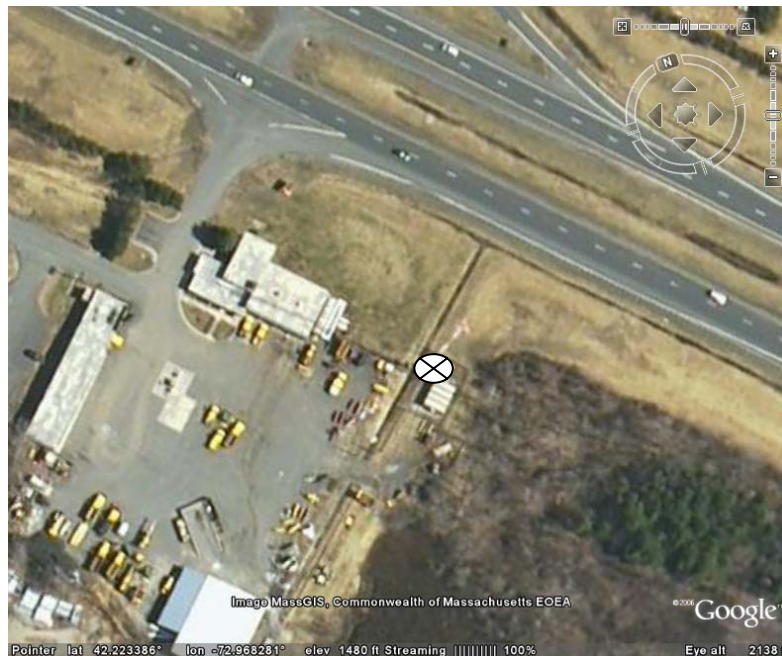
## Data Update for Blandford, MA October 2006

Prepared for  
Massachusetts Technology Collaborative  
75 North Drive, Westborough, MA 01581

By Matthew Lackner

### Monthly Data Summary for October 2006

This update summarizes the monthly data results for the Blandford monitoring site in Blandford, MA, at  $42.223^{\circ}$  N,  $72.968^{\circ}$  W (NAD 27). The site is located on the MTA tower in Blandford, MA. The picture below shows the location of the tower, with the circle and cross indicating the location of the tower base.



The data for October, 2006 begins on October 15, 2006, and so all the summary information presented below covers the period from October 15, 2006 through October 31, 2006.

Two anemometers and one wind vane are mounted at 60 m (197 ft) and 40 m (131 ft). More information on the sensors and site can be found at [http://www.ceere.org/rerl/rerl\\_resourcedata.html](http://www.ceere.org/rerl/rerl_resourcedata.html).

Height	Wind Speed			Prevailing Wind Direction
	Mean [m/s]	Max [m/s]	Turbulence Intensity	
40 m	5.9	15.8	0.24	WNW
60 m	6.9	17.5	0.20	WNW

The data can be found at the Renewable Energy Research Laboratory web site: [http://www.ceere.org/rerl/rerl\\_resourcedata.html](http://www.ceere.org/rerl/rerl_resourcedata.html).

### Data Recovery

All raw wind data are subjected to a series of tests and filters to identify data that are faulty or corrupted. The gross percentage of data recovered (ratio of the number of raw data points received to data points expected) and net data recovered (ratio of raw data points which passed all QA control tests to data points expected) are shown below.

Gross Data Recovered [%]	100
Net Data Recovered [%]	97.8

### Maintenance Issues and Changes to Site Configuration

The following maintenance/equipment problems occurred during October 2006, and the following corrective action was taken:

### Monthly Data Time Series

Below is a graph of wind speed at Blandford for the month of October 2006, at the anemometer height of 60 m.

