

WIND DATA REPORT

Bishop and Clerks

March 1, 2005 – May 31, 2005

Prepared for

Massachusetts Technology Collaborative
75 North Drive
Westborough, MA 01581

by

Christopher N. Elkinton
Anthony L. Rogers
Anthony F. Ellis

June 27, 2005

Renewable Energy Research Laboratory
University of Massachusetts, Amherst
160 Governors Drive, Amherst, MA 01003

www.ceere.org/rerl • (413) 545-4359 • rerl@ecs.umass.edu



NOTICE AND ACKNOWLEDGEMENTS

This report was prepared by the Renewable Energy Research Laboratory (RERL) at the University of Massachusetts, Amherst in the course of performing work sponsored by the Renewable Energy Trust (RET), as administered by the Massachusetts Technology Collaborative (MTC), pursuant to work order number 05-1. The opinions expressed in this report do not necessarily reflect those of MTC or the Commonwealth of Massachusetts, and reference to any specific product, service, process, or method does not constitute an implied or expressed recommendation or endorsement of it.

Further, MTC, the Commonwealth of Massachusetts, and RERL make no warranties or representations, expressed or implied, as to the fitness for particular purpose or merchantability of any product, apparatus, or service, or the usefulness, completeness, or accuracy of any processes, methods or other information contained, described, disclosed, or referred to in this report. MTC, the Commonwealth of Massachusetts, and the contractor make no representation that the use of any product, apparatus, process, method, or other information will not infringe privately owned rights and will assume no liability for any loss, injury, or damage directly or indirectly resulting from, or occurring in connection with, the use of information contained, described, disclosed, or referred to in this report.

TABLE OF CONTENTS

Notice and Acknowledgements	1
Table of Contents	2
Table of Figures	2
Executive Summary	3
SECTION 1 - Station Location	4
SECTION 2 - Instrumentation and Equipment	4
SECTION 3 - Data Collection and Maintenance	6
Data Statistics Summary	7
SECTION 4 - Data Recovery and Validation	7
Test Definitions	7
Sensor Statistics	9
SECTION 5 - Data Summary	9
SECTION 6 - Graphs	11
Wind Speed Time Series	11
Wind Speed Distributions	11
Wind Roses	12
APPENDIX A - Sensor Performance Report	13
Test Definitions	13
Sensor Statistics	13
APPENDIX B - Plot Data	14
Wind Speed Distribution Data	14
Wind Rose Data	15

TABLE OF FIGURES

Figure 1 - Site location at Bishop & Clerks light	4
Figure 2 - Anemometry mast and data collection equipment at Bishop & Clerks	5
Figure 3 - Railing stiffener connecting PV bracket to rail	6
Figure 4 - Wind Speed Time Series, March 2005 – May 2005	11
Figure 5 - Wind Speed Distribution, March 2005 – May 2005	11
Figure 6 - Wind Rose, March 2005 – May 2005	12

EXECUTIVE SUMMARY

All the work presented in this Wind Data Report including installation and decommissioning of the meteorological tower and instrumentation, and the data analysis and reporting was performed by the Renewable Energy Research Laboratory (RERL) at the University of Massachusetts, Amherst.

This wind measurement station is installed on the Bishop & Clerks US Coast Guard (USCG) automated lighthouse, almost 3 miles south-southeast of Pt. Gammon on Cape Cod, MA. Installed in November of 2000, the wind monitoring station has been in continuous operation to this day. The two anemometers and wind vanes are mounted 15 m (49 ft) above the Mean Low Water Level.

During the season covered by this report, March 2005 – May 2005, the mean recorded wind speed was 7.45 m/s (16.8 mph)* and the prevailing wind direction was from the north-northeast. The gross data recovery percentage (the actual percentage of expected data received) was 99.99% and the net data recovery percentage (the percentage of expected data which passed all of the quality assurance tests) was 98.62%. Both of these percentages are very high, indicating that the sensors and data logger were performing well. The small percentage of erroneous data are due primarily to icing events in March.

Additional information about interpreting the data presented in this report can be found in the Fact Sheet, “Interpreting Your Wind Resource Data,” produced by RERL and the Massachusetts Technology Collaborative (MTC). This document is found through the RERL website:

www.ceere.org/rerl/about_wind/RERL_Fact_Sheet_6_Wind_resource_interpretation.pdf.

* 1 m/s = 2.25 mph.

SECTION 1 - Station Location

Bishop & Clerks was originally a small island south of Hyannis in the 1800's. Over time, it has eroded down to a few exposed rocks. The concrete and stone base of the lighthouse is currently the largest remaining piece above water. The lighthouse is located within the three-mile state limit of Massachusetts' waters, at $41^{\circ}34'27.6''$ North, $070^{\circ}14'59.5''$ West (Figure 1). A photo of the lighthouse as it stands today can be seen at www.ceere.org/reerl/reerl_offshore.html. The wind monitoring station at Bishop and Clerks is located on the top of the USCG lighthouse facility. Relative to the Mean Low Water Level, the anemometry is mounted at a height of 15 m (49 ft).

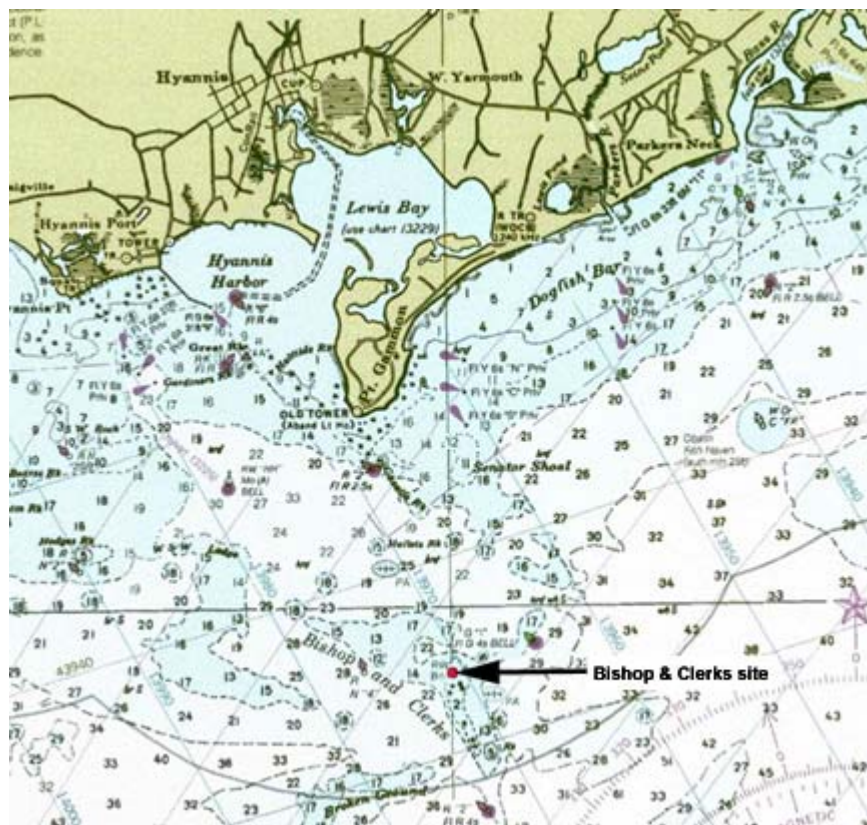


Figure 1 - Site location at Bishop & Clerks light

SECTION 2 - Instrumentation and Equipment

The wind monitoring equipment is mounted on a 12 ft long, 3" diameter, aluminum mast that is secured to the deck railing at the top of the lighthouse (Figure 2). All the remaining monitoring equipment comes from NRG Systems, and consists of the following items:

- Model 9300 Cellogger®, serial # 0258
- Electrical enclosure box with 5 watt PV panel
- Yagi directional antenna and mount
- 2 – #40 Anemometers, standard calibration (Slope - 0.765 m/s, Offset – 0.350 m/s)
- 2 - #200P Wind direction vanes
- 4 – Sensor booms, 43” length
- Lightning rod and grounding cable
- Shielded sensor wire



Figure 2 - Anemometry mast and data collection equipment at Bishop & Clerks

Limitations of this setup are that the mast height is low relative to the diameter of the lighthouse and the fact that the warning light and a PV panel mounted on top of the tower can interfere with the free flow of air. The mast height is limited by the stiffness of the railing. In fact, it was necessary to reinforce the free end of the railing to the USCG lighthouse PV panel brackets in order to use even the 12 ft mast (Figure 3) which otherwise shook severely in high winds.



Figure 3 - Railing stiffener connecting PV bracket to rail

The NRG 9300 system logger is equipped with a built-in cell phone so that the data can be transmitted weekly to a PC, located at the University of Massachusetts, Amherst. The logger samples wind speed and direction once every second. These are then combined into 10-minute averages, and along with the standard deviation for those 10-minute periods, are put into a binary file. These binary files are converted to ASCII text files using the NRG software BaseStation®. These text files are then imported into a database software program where they are subjected to quality assurance (QA) tests prior to using the data.

SECTION 3 - Data Collection and Maintenance

The following maintenance/equipment problems occurred during the report period, and the following corrective actions taken:

- There were 3 isolated instances of single missing data. These are most likely due to interruptions in the measurements during the data transmission process.
- The majority of the faulty data were flagged by the icing filter.
- An upgrade of the communication software was made at the RERL office on 4/7/05.

Data Statistics Summary

Date	Mean Wind Speed [m/s]	Max Wind Speed [m/s]	Turbulence Intensity []	Prevailing Wind Direction []
Mar 2005	7.4	19.38	0.11	WNW
Apr 2005	7.54	21.39	0.1	SW
May 2005	7.42	22.68	0.13	NNE
Mar 05 – May 05	7.45	22.68	0.11	NNE

No measurement of wind speed can be perfectly accurate. Errors occur due to anemometer manufacturing variability, anemometer calibration errors, the response of anemometers to turbulence and vertical air flow and due to air flows caused by the anemometer mounting system. Every effort is made to reduce the sources of these errors. Nevertheless, the values reported in this report have an expected uncertainty of about $\pm 2\%$ or ± 0.2 m/s.

SECTION 4 - Data Recovery and Validation

All raw wind data are subjected to a series of tests and filters to weed out data that are faulty or corrupted. Definitions of these QA controls are given below under Test Definitions and Sensor Statistics. The gross percentage of data recovered (ratio of the number of raw data points received to data points expected) and net percentage (ratio of raw data points which passed all QA control tests to data points expected) are shown below.

Gross Data Recovered [%]	99.992
Net Data Recovered [%]	98.619

The high Gross Data Recovery Percentage is an indication that the logger was recording and transmitting properly. The high Net Data Recovery Percentage is an indication that the sensors were functioning properly and that little or no icing conditions were present.

Test Definitions

All raw data were subjected to a series of validation tests, as described below. The sensors tested and the parameters specific to each sensor are given in the Sensor Performance Report which is included in APPENDIX A. Data which were flagged as invalid were not included in the statistics presented in this report.

MinMax Test: All sensors are expected to report data values within a range specified by the sensor and logger manufacturers. If a value falls outside this range, it is flagged as invalid. A data value from the sensor listed in Test Field 1 (TF1) is flagged if it is less than Factor 1 (F1) or greater than Factor 2. This test has been applied to the following sensors (as applicable): wind speed, wind speed standard deviation, wind direction, temperature, and solar insolation.

$$F1 > TF1 > F2$$

MinMaxT Test: This is a MinMax test for wind direction standard deviation with different ranges applied for high and low wind speeds. A wind direction standard deviation data value (TF1) is flagged either if it is less than Factor 1, if the wind speed (TF2) is less than Factor 4 and the wind direction standard deviation is greater than Factor 2, or if the wind speed is greater than or equal to Factor 4 and the wind direction standard deviation is greater than Factor 3.

$$\begin{aligned} & (TF1 < F1) \\ & \text{or } (TF2 < F4 \text{ and } TF1 > F2) \\ & \text{or } (TF2 \geq F4 \text{ and } TF1 > F3) \end{aligned}$$

Icing Test: An icing event occurs when ice collects on a sensor and degrades its performance. Icing events are characterized by the simultaneous measurements of near-zero standard deviation of wind direction, non-zero wind speed, and near- or below-freezing temperatures. Wind speed, wind speed standard deviation, wind direction, and wind direction standard deviation data values are flagged if the wind direction standard deviation (CF1) is less than or equal to Factor 1 (F1), the wind speed (TF1) is greater than Factor 2 (F2), and the temperature (CF2) is less than Factor 3 (F3). To exit an icing event, the wind direction standard deviation must be greater than Factor 4 (F4).

$$CF1 \leq F1 \text{ and } TF1 > F2 \text{ and } CF2 < F3$$

CompareSensors Test: Where primary and redundant sensors are used, it is possible to determine when one of the sensors is not performing properly. For anemometers, poor performance is characterized by low data values. Therefore, if one sensor of the pair reports values significantly below the other, the low values are flagged. At low wind speeds (Test Fields 1 and 2 less than or equal to Factor 3) wind speed data are flagged if the absolute difference between the two wind speeds is greater than Factor 1. At high wind speeds (Test Fields 1 or 2 greater than Factor 3) wind speed data are flagged if the absolute value of the ratio of the two wind speeds is greater than Factor 2.

$$\begin{aligned} & [TF1 \leq F3 \text{ and } TF2 \leq F3 \text{ and } \text{abs}(TF1 - TF2) > F1] \\ & \text{or } [(TF1 > F3 \text{ or } TF2 > F3) \text{ and } (\text{abs}(1 - TF1 / TF2) > F2 \text{ or } \text{abs}(1 - TF2 / TF1) > F2)] \end{aligned}$$

Sensor Statistics

Expected Data Points: the total number of sample intervals between the start and end dates (inclusive).

Actual Data Points: the total number of data points recorded between the start and end dates.

% Data Recovered: the ratio of actual and expected data points (this is the *gross data recovered percentage*).

Hours Out of Range: total number of hours for which data were flagged according to MinMax and MinMaxT tests. These tests flag data which fall outside of an expected range.

Hours of Icing: total number of hours for which data were flagged according to Icing tests. This test uses the standard deviation of wind direction, air temperature, and wind speed to determine when sensor icing has occurred. It should be noted that, while this test is tuned to detect sensor icing events, it is possible for the conditions that are representative of icing to occur at other times. The error due to this possibility is considered to be insignificant.

Hours of Fault: total number of hours for which data were flagged according to CompareSensors tests. These tests compare two sensors (e.g. primary and redundant anemometers installed at the same height) and flag data points where one sensor differs significantly from the other.

% Data Good: the filter results are subtracted from the gross data recovery percentage to yield the *net data recovered percentage*.

SECTION 5 - Data Summary

This report contains several types of wind data graphs. Unless otherwise noted, each graph represents data from 1 quarter (3 months). The following graphs are included:

- Time Series – 10-minute average wind speeds are plotted against time. The wind speed time series is shown in Figure 4.
- Wind Speed Distribution – A histogram plot giving the percentage of time that the wind is at a given wind speed. This plot shows a broad peak. The wind speed distribution is shown in Figure 5.
- Wind Rose – A plot, by compass direction showing the percentage of time that the wind comes from a given direction and the average wind speed in that direction. This wind rose shows that the prevailing direction was from the

northwest, although a large percentage of the wind was from the southwest. Typically, the spring winds at this site are from the southwest. The wind rose is shown in Figure 6.

SECTION 6 - Graphs

Data for the wind speed histograms, monthly and diurnal average plots, and wind roses are included in APPENDIX B.

Wind Speed Time Series

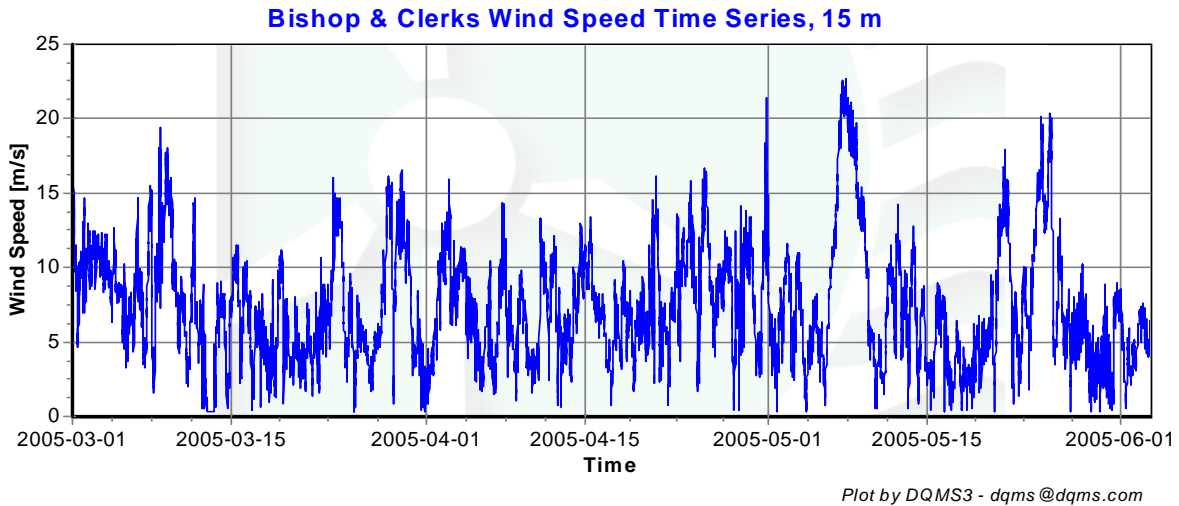


Figure 4 - Wind Speed Time Series, March 2005 – May 2005

Wind Speed Distributions

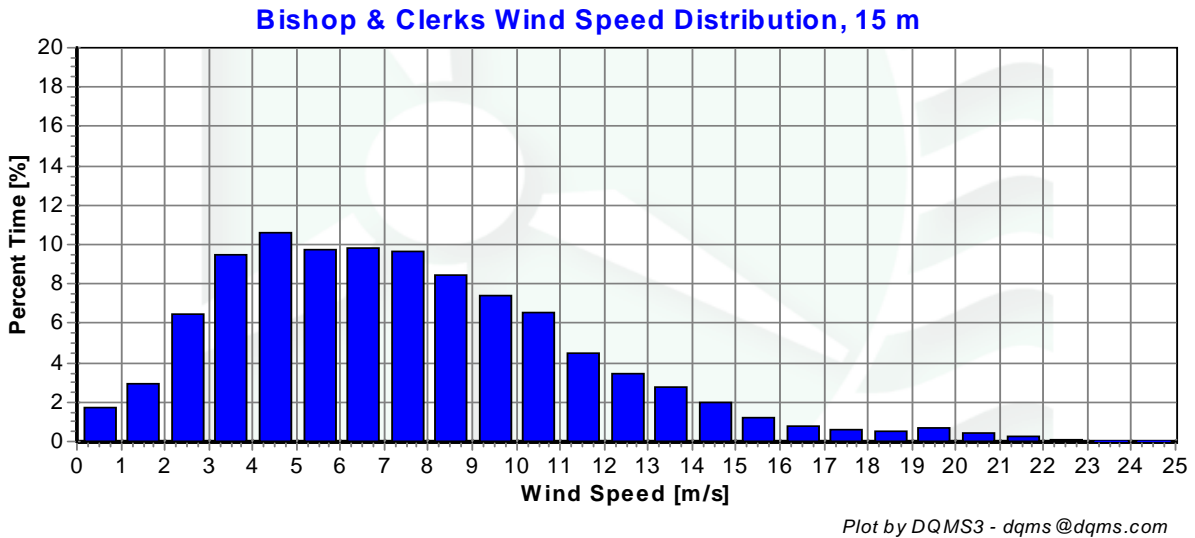


Figure 5 - Wind Speed Distribution, March 2005 – May 2005

Wind Roses

Bishop & Clerks Wind Rose, 15m

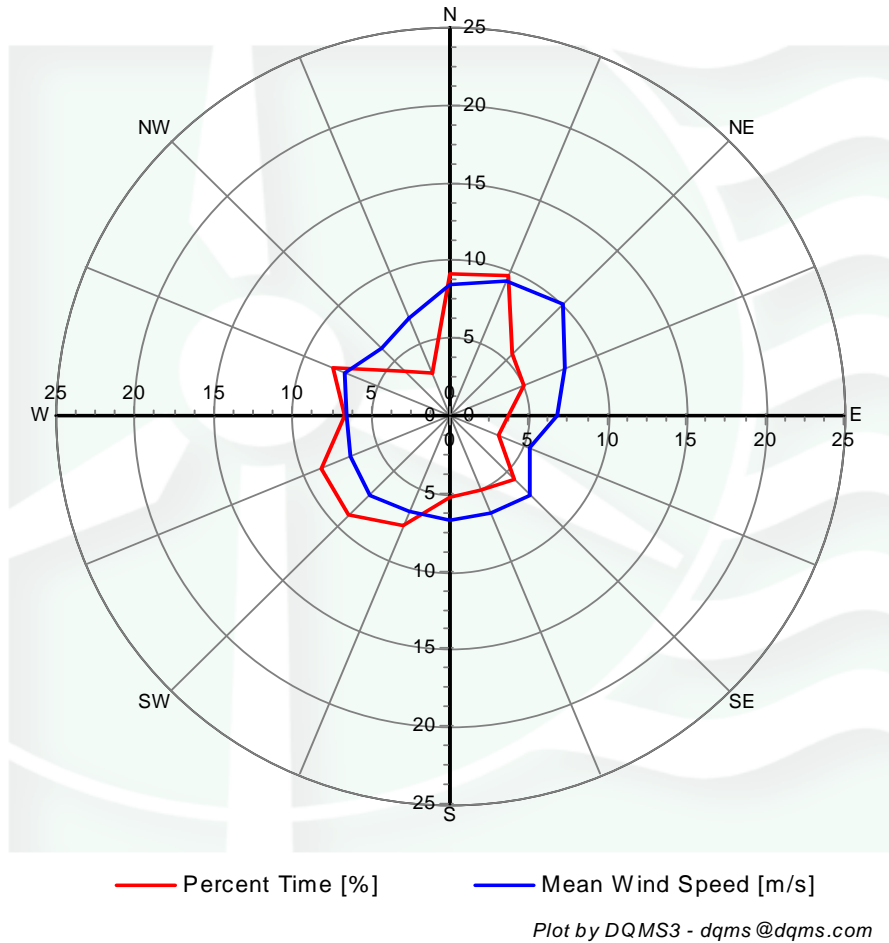


Figure 6 - Wind Rose, March 2005 – May 2005

APPENDIX A - Sensor Performance Report

Test Definitions

Test Order	Test Field1	Test Field2	Test Field3	Calc Field1	Calc Field2	Calc Field3	TestType	Factor 1	Factor 2	Factor 3	Factor 4
1							TimeTest Insert				
3	ltmp13aDEGC						MinMax	-30	60		
4	Batt13aVDC						MinMax	10.5	15		
10	Anem15aMS						MinMax	0	90		
11	Anem15bMS						MinMax	0	90		
12	Anem15yMS						MinMax	0	90		
20	AnemSD15aMS						MinMax	0	4		
21	AnemSD15bMS						MinMax	0	4		
22	AnemSD15yMS						MinMax	0	4		
30	Vane15aDEG						MinMax	0	359.9		
31	Vane15bDEG						MinMax	0	359.9		
32	Vane15yDEG						MinMax	0	359.9		
50	Turb15zNONE						MinMax	0	2		
200	VaneSD15aDEG	Anem15aMS					MinMaxT	0	100	100	10
201	VaneSD15bDEG	Anem15bMS					MinMaxT	0	100	100	10
300	Anem15aMS	AnemSD15aMS	Vane15aDEG	VaneSD15aDEG	ltmp13aDEGC		Icing	0.5	1	2	2
301	Anem15bMS	AnemSD15bMS	Vane15bDEG	VaneSD15bDEG	ltmp13aDEGC		Icing	0.5	1	2	2
400	Anem15aMS	Anem15bMS					CompareSensors	1	0.25	3	

Sensor Statistics

Sensor	Expected Data Points	Actual Data Points	% Data Recovered	Hours Out of Range	Hours of Icing	Hours of Fault	% Data Good
ltmp13aDEGC	13248	13247	99.992	0	0	0	99.992
Batt13aVDC	13248	13247	99.992	0	0	0	99.992
Anem15aMS	13248	13247	99.992	0.333	34.167	5.333	98.188
AnemSD15aMS	13248	13247	99.992	0.333	34.167	5.333	98.188
Anem15bMS	13248	13247	99.992	0.167	35.833	4.5	98.158
AnemSD15bMS	13248	13247	99.992	0.167	35.833	4.5	98.158
Vane15aDEG	13248	13247	99.992	0.667	34.167	0	98.415
VaneSD15aDEG	13248	13247	99.992	0.667	34.167	0	98.415
Vane15bDEG	13248	13247	99.992	0.667	35.833	0	98.339
VaneSD15bDEG	13248	13247	99.992	0.667	35.833	0	98.339
Total	132480	132470	99.992	3.667	280	19.667	98.619

APPENDIX B - Plot Data

Wind Speed Distribution Data

Bin Center Wind Speed [m/s]	Percent of Time [%]
0.5	1.69
1.5	2.92
2.5	6.42
3.5	9.5
4.5	10.57
5.5	9.75
6.5	9.85
7.5	9.63
8.5	8.45
9.5	7.41
10.5	6.54
11.5	4.52
12.5	3.41
13.5	2.72
14.5	2
15.5	1.23
16.5	0.76
17.5	0.58
18.5	0.54
19.5	0.7
20.5	0.43
21.5	0.28
22.5	0.08
23.5	0
24.5	0

Table 1 - Wind Speed Distribution

Wind Rose Data

Direction	Percent Time [%]	Mean Wind Speed [m/s]
N	9.08	8.42
NNE	9.76	9.43
NE	5.65	10.17
ENE	5.07	7.93
E	3.76	6.85
ESE	3.31	5.46
SE	5.83	7.24
SSE	5.16	6.75
S	5.31	6.73
SSW	7.62	6.68
SW	9.02	7.21
WSW	8.88	6.77
W	6.7	6.57
WNW	7.97	7.27
NW	3.97	6.21
NNW	2.91	6.81

Table 2 - Wind Rose, Time Percentage and Mean Wind Speed by Direction