



2013 REPORT ON ANNUAL INDICATORS

University Performance Measurement System

July, 2013



The University of Massachusetts

Amherst • Boston • Dartmouth • Lowell • Worcester • UMassOnline

DEFINITIONS AND SOURCES

ACADEMIC QUALITY INDICATORS

Doctoral Degrees Awarded. Total number of Doctorates awarded by UMass campuses for the academic year 2011-12, which includes September 2011, January 2012, and May 2012 award dates. The data includes both research/scholarship and first-professional doctoral degrees.

Research Expenditures. FY 2012 data as reported to the National Science Foundation (NSF) through its annual Survey of R&D Expenditures at Universities and Colleges. This survey is now called the Higher Education Research and Development (HERD) Survey.

License Income. Amount of annual income from license agreements as reported to the Association of University Technology Managers for its annual survey.

ACCESS AND AFFORDABILITY INDICATORS

Tuition and Fees as a Percentage of Family Income. Tuition and mandatory fees for in-state undergraduates (FY 2012) as a percentage of state-wide median family income as reported by US Census in 2012 inflation-adjusted dollars (latest available). Comparative data are from IPEDS and US Census.

Percentage of undergraduate students from Massachusetts. Percentage of Fall 2012 undergraduate state-supported students from in-state as determined by tuition residency classification.

Online course enrollments and Rate of growth in online course enrollments. Total course enrollments in online courses. Percentage rate of growth in annual course registrations. Academic Year 2012-12 represents Fall 2011, Winter 2012, Spring 2012, and Summer 2012 enrollments. Data are for fully online (100%) and blended courses. Source: *UMassOnline*.

STUDENT SUCCESS AND SATISFACTION INDICATORS

Percentage of Undergraduate Students of Color. Fall 2012 undergraduates who are Black (including Cape Verdean), Hispanic/Latino, Asian and/or Native American, divided by total U.S. citizens and permanent residents who report race/ethnicity. Comparative data for 2012 public high school graduates are from the MA Department of Education.

Percentage Undergraduates who are International. Percentage of all undergraduates who are studying at the university on a student visa. International students include all eligible visa types as long as they are enrolled for a credit

course; i.e., international students do not include U.S. citizens, U.S. permanent residents or refugees.

SERVICE TO THE COMMONWEALTH INDICATORS

Enrollment of Massachusetts residents. Number of first-year undergraduates enrolling at each institution who are residents of Massachusetts. Data are from Fall 2012 IPEDS Enrollment student residency table.

Enrollment by region. In-state undergraduate enrollment by region for Fall 2012.

Degrees conferred by field. 2011-12 degrees conferred by UMass campuses by field. IPEDS 2011-12 Completions data.

UMass degrees as Percent of all Massachusetts degrees. Degrees awarded by UMass as % of total degrees awarded by colleges and universities in the state in 2011-12 based on IPEDS Completions Survey.

Percent of graduates who live in Massachusetts. Percentage of total undergraduate and graduate degree recipients who currently reside in Massachusetts based on alumni records as of Fall 2012.

MTEL Science & Math Test-Takers. Total number of students who took the Massachusetts Tests for Educator Licensure (MTEL) subject tests in science and math fields. Data compiled from the campuses' MTEL Annual Institution reports.

FINANCIAL HEALTH INDICATORS

Endowment assets. Market value of true and quasi-endowment assets. Data from the UMass Foundation Advancement Report to the Board of Trustees. Comparative data are from IPEDS, financial statements and NACUBO survey.

Private Funds Raised Annually. Private funds raised includes restricted and unrestricted revenues from individuals, foundations, corporations and other organizations. Includes private grant revenues but not private contract revenues. Totals for each year include pledges made in that year as well as the value of in-kind contributions. Data from the UMass Foundation Advancement Report to the Board of Trustees.

Return on Net Assets. Increase/decrease in net assets divided by total net assets at beginning of the year. Peer data from published financial statements.

Financial Cushion. Unrestricted net assets as a percentage of operating expenditures and interest expense. Peer data are from published financial statements. Not comparable to prior years.

Debt Service to Operations. Debt service payments as a percentage of operating expenditures and interest expense. Peer data from published financial statements. Not comparable to prior years.

Total Deferred Maintenance (DM) Cost & Deferred Maintenance Cost (DM) per Square Foot of Space.

These new indicators better reflect the condition of campus facilities and are based on work being done with the facilities asset advisory firm *Sightlines* utilizing their *The Return on Physical Assets (ROPA sm)* methodology.

Total Deferred Maintenance (DM) Cost. Includes deferred and other maintenance dollars needed to maintain the current function of the campus. This is the amount needed to address the deferred maintenance backlog plus the code work that would be mandated to allow the campus to continue to use the space once the repairs were complete.

DM Cost per Square Foot. The total deferred maintenance cost per square foot of space. This ratio quantifies the average dollar level of deferred maintenance work needed per square foot of space.

PEER INSTITUTIONS FOR UMASS SYSTEM

Peer University Systems

University of Connecticut
University of California
University of Colorado
University of Illinois
University of Maryland
University of Missouri

New England Public Universities

University of Connecticut
University of Maine
University of New Hampshire
University of Rhode Island
University of Vermont

Massachusetts Private Universities

Boston College
Boston University
Brandeis University
Clark University
Harvard University
Massachusetts Institute of Technology
Northeastern University
Suffolk University
Tufts University

Please Note: Unless otherwise specified, all data are from the UMPO - Office of Institutional Research.

HEADLINES FROM THE 2013 ANNUAL INDICATORS

ACADEMIC QUALITY

The Top American Research Universities (TARU - The Center) identifies nine performance indicators as measures of academic quality to evaluate the comparative performance of public and private research universities that generate over \$40 million in federal research annually. Included in this group are ten public research universities with a Carnegie classification of very high research activity (RU/VH) with which the Amherst campus is comparing its progress on these and other indicators. All but two of the peers, the Universities of Connecticut and Delaware, are among the 61 members of the Association of American Universities (AAU). AAU institutions are recognized for their excellence in research and education. Therefore, the benchmark for the Amherst campus is quite high, and its performance is generally lower than its peers. In 2013, the University of Oregon, an AAU institution, replaced the University of Nebraska from UMA's list of institutional peers. Historical data have been adjusted to reflect this change.

Student Academic Quality. The academic profile of entering students has made impressive gains in recent years, evidenced by growth in both high school GPA and SAT scores. The high school GPA of entering students increased from 3.56 in 2008 to 3.66 in 2012. Ninety-nine percent of students entered UMA with a high school GPA of 3.0 and above. Average SAT scores improved by 55 points over the five-year period, but still fall below the median of the peer group at the 75th percentile. However, the campus is making progress in closing the gap. Further, seniors report high satisfaction with their undergraduate experience. Results from the National Survey of Student Engagement (NSSE) show that 86% of seniors rated their UMass Amherst educational experience positively, and increasing numbers rated it as excellent.

Advanced Training. The campus has demonstrated strength in the education and training of pre- and post-doctoral researchers. Here, too, UMass Amherst is below the peer median for the number of degrees awarded. In recent years, the number of post-doctorates receiving training has declined, some of which can be attributed to the 2012 implementation of the campus's first postdoc union contract.

Research and Creative Activity. Total and federal research dollars in science and engineering (R&D) are key measures of an institution's commitment to and success in research. The Amherst campus faculty has been successful in competing for these dollars. Total

R&D spending in Science and Engineering increased by 17%, and total R&D expenditures per faculty increased by 11% in the past five years. The campus ranks 68th among public research universities on R&D expenditures (TARU). Despite improvements in research spending, the campus consistently performs below the median of its peers.

The number of academic honors and awards bestowed on its faculty is another indicator of an institution's quality. UMass Amherst's faculty has shown strength in this area, but has been below the peer median on faculty awards for the past two years. The number of National Academy members has remained stable, but below the peer median.

In recent years, the campus invested in tenure-system faculty, and the number of faculty exceeded 1,000 for the first time since 2001. Nevertheless, it is considerably smaller than top public research universities. Continued growth in the tenure-system faculty will be required for the campus to make significant progress in improving academic quality and research productivity, and to advance in the research university rankings.

ACCESS AND AFFORDABILITY

Providing an affordable and accessible education of high quality is stated in the University's mission. In the 2011-12 academic year, the neediest in-state students at UMA (23%) received aid in the form of Pell grants. Eighty-six percent of financial need was met for in-state students who applied for aid. The campus continues to recognize its commitment to students with financial need, and has increased institutional need-based aid accordingly.

STUDENT SUCCESS AND SATISFACTION

Most UMass Amherst students have a positive educational experience. Eighty-eight percent of students return for their sophomore year, 70% graduate within six years from UMA, and 11% graduate from another institution. This is the highest graduation rate since the campus began tracking this statistic. The retention and graduation rates have improved in recent years but remain somewhat below the peer median. The campus is implementing and expanding programs that will enrich the college experience with a goal of increasing retention and graduation rates. Such initiatives include a *First-Year Intelligence* program, SophoMORE, and expanded research and scholarship opportunities for undergraduates. Changes in the design and delivery of

the General Education curriculum, including an integrative experience requirement for all upper division students also serve to enhance and enrich the student academic experience.

The campus has made progress in increasing the diversity of the campus. The fall 2012 entering class was one of the most diverse groups of students in recent history. Many will be the first in their families to complete the baccalaureate. The campus will continue to attract a diverse student body and to encourage greater appreciation for diverse populations.

SERVICE TO THE COMMONWEALTH

The Amherst campus has invested in programs to promote the enrollment and graduation of undergraduate and graduate students in the sciences and mathematics. In fall 2012, 31% of baccalaureate and 30% of graduate students were enrolled in Science, Technology, Engineering and Mathematics (STEM) programs, and over one-quarter of degrees awarded at the undergraduate and graduate levels were in STEM. These investments will continue.

FINANCIAL HEALTH

The fiscal goals of the campus are to develop reliable income streams to supplement state support of campus operations and to devote more of its unrestricted revenue to capital improvements. Funds will also be allocated to replenish faculty strength. Investment in capital improvements and restoration of faculty are necessary if the campus is to remain nationally competitive. Through these investments, the campus will enhance its academic mission and bolster its reputation.

The campus recently announced the launch of *UMass Rising*, a comprehensive fundraising campaign with a goal of \$300 million. The campaign is designed to enhance excellence and contribute to the long-term sustainability of the campus.

The campus is also engaged in the first phase of a strategic plan, *Innovation and Impact: Renewing the Promise of the Public Research University*. This has been an open, participatory and transparent process and more than 130 members of the campus community contributed to the draft document. The resulting plan will set an agenda for the campus, and will guide subsequent institutional-level and departmental implementation plans.

2012 ANNUAL INDICATORS AT A GLANCE

ACADEMIC QUALITY

• Average HS GPA of Freshmen	3.66
• Average SAT Scores of Freshmen	
<i>Arithmetic Mean</i>	1197
<i>25th – 75th Percentile</i>	1110 – 1280
• Average GPA of Entering Transfer Students	3.27
• Student Satisfaction with Educational Experience	87%
• No. of Doctoral Degrees Awarded	305
• No. of Postdoctoral Appointees	167
• Total R&D Expenditures	\$194.8M
• Federal R&D Expenditures	\$115.3M
• Total R&D/per Tenure-track Faculty	\$172,681
• Patent Applications	26
• License Income	\$0.95M
• New Tenured/Tenure-Track Faculty Hired	56
• Change in Tenured/Tenure-Track Faculty	16
• Change in Faculty FTE	20
• Faculty Awards	6
• National Academy Members	9

ACCESS AND AFFORDABILITY

• % Pell Grant Recipients	23%
• % of Need Met for In-State Students Awarded	
Need-Based Aid	86%
• % Undergraduates from Massachusetts	78%
• Online Course Enrollments	18,076
• Annual Growth in Online Course Enrollments	10%

STUDENT SUCCESS AND SATISFACTION

• % Undergraduates who are Students of Color	21%
--	-----

• % Undergraduates who are First Generation	
in College	26%
• % Undergraduates with English as a Second	
Language	10%
• % Undergraduates who are International	2%
• Number Undergraduates who Participated in a	
Study Abroad Program	1,074
• Freshman One-Year Retention Rate	88%
• Freshman Six-Year Graduation Rate	70%
• Transfer (Full-time) One-Year Retention Rate	86%
• Transfer (Upper Division) Four-Year	
Graduation Rate	74%

SERVICE TO THE COMMONWEALTH

• Percent Alumni who remain in MA	51%
• Enrollment in STEM Programs	8,353 (31%)
<i>Undergraduate</i>	6,624 (31%)
<i>Graduate</i>	1,729 (30%)
• Degrees Awarded in STEM Fields	1,833 (26%)
<i>Undergraduate</i>	1,381 (25%)
<i>Graduate</i>	452 (27%)
• MTEL Science and Math Test-Takers	19

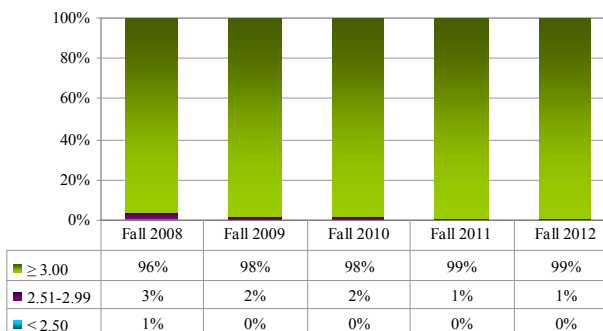
FINANCIAL HEALTH

• Total Endowment	\$230.6M
• Annual Growth in Endowment	10%
• Endowment Per Annualized Student FTE	\$8,544
• Private Funds Raised Annually	\$31.3M
• Return on Net Assets	11.3%
• Financial Cushion	24.8%
• Debt Ratio	5.5%
• Deferred Maintenance per GSF	\$162

ACADEMIC QUALITY

High School GPA of Freshmen

UMass Amherst entering first-year students are strong academically with an average high school GPA of 3.66. The Fall 2012 entering class was at a historical high with 99% of students earning a GPA of 3.0 and above. This was the sixth consecutive year of increases. There were 4,592 students in the Fall 2012 entering class.



	2008	2009	2010	2011	2012
<i>Average</i>	3.56	3.60	3.61	3.64	3.66

Average SAT Scores of Freshmen

First-year students entered UMA with a mean SAT of 1197, posting an increase of 55 over the five-year period. This is another historical high for the campus. SAT scores have improved by 20 points at the 75th percentile and 60 points at the 25th percentile since Fall 2008. The campus is above the median of the peer group at the 25th percentile, but still lags the peers at the 75th.

	Fall 2008	Fall 2009	Fall 2010	Fall 2011	Fall 2012
<i>75th Percentile</i>	1260	1280	1250	1270	1280
<i>25th Percentile</i>	1050	1060	1080	1100	1110
<i>Peer Median</i>					
<i>75th Percentile</i>	1290	1295	1305	1310	1305
<i>25th Percentile</i>	1070	1065	1075	1085	1075
<i>UMA Rank</i>					
<i>75th Percentile</i>	9	8	10	8	8
<i>25th Percentile</i>	8	6	8	5	4

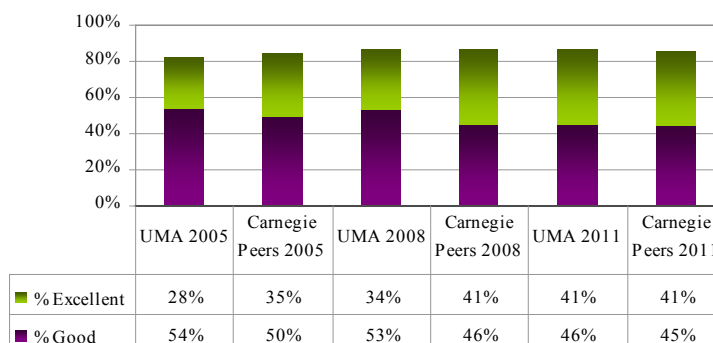
Average GPA of Entering Transfer Students

The transfer grade-point remained high. It consistently surpasses the mandated Department of Higher Education minimum of 2.00 for transfer students.

	Fall 2008	Fall 2009	Fall 2010	Fall 2011	Fall 2012
<i>UMA</i>	3.16	3.23	3.25	3.29	3.27

Student Satisfaction With Educational Experience

Seniors evaluate their UMA educational experience quite positively in the National Survey of Student Engagement (NSSE). In 2011, almost 90% of students rated their experience as good or excellent. These rates are comparable with other Carnegie VH Research Universities. The proportion of students who rated the experience as excellent has shown strong gains since 2005, increasing from 28% in 2005 to 41% in 2011. The survey will be administered again in Spring 2014.



Doctoral Degrees Awarded

The number of doctorates awarded at UMA, both research scholarship and professional practice degrees, increased in 2011-12. Professional Practice doctorates have increased since the campus began reporting this award. In contrast, the number of research/scholarship degrees at peer institutions decreased. UMA remains near the bottom of the peer group on this measure.

UMA Doctoral Degrees Awarded	2007-08	2008-09	2009-10	2010-11	2011-12
<i>Research/Scholarship Doctorates</i>	291	255	259	258	268
<i>Professional Practice Doctorates</i>	-	-	22	24	37
Total Doctoral Degrees Awarded	291	255	281	282	305

Research/Scholarship Doctorates	2007-08	2008-09	2009-10	2010-11	2011-12
UMA	291	255	259	258	268
Peer Median	335	329	301	359	345
Rank	8	9	9	9	8

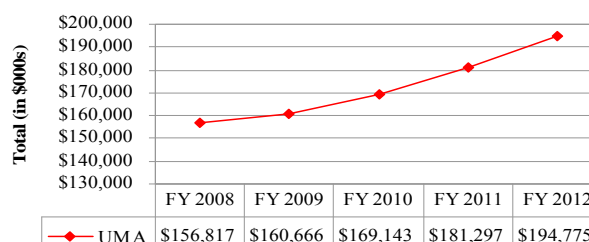
Postdoctoral Appointees

UMass Amherst senior faculty mentor recent PhDs with science and engineering degrees. The number of post-doctoral scholars has dropped in the past few years. This can be explained by the 2012 implementation of the campus' first postdoc union contract. The negotiated stipend increases and benefits resulted in some postdoc layoffs, non-reappointments, and, for some PIs, a decrease in the number of new hires.

	2007-08	2008-09	2009-10	2010-11	2011-12	2012-13
UMA	178	224	209	218	202	167
Peer Median	174	160	167	196	NA	NA
Rank	6	4	5	6	NA	NA

Total Research & Development (R&D) Expenditures

Total R&D spending for the campus in FY12 was about \$195 million, of which over \$178 million was in science and engineering (S&E). S&E spending has increased 17% in total dollars and one-third in federal dollars since FY2007. The rate of growth from FY08-11 for the campus has exceeded that of peer institutions. S&E expenditures were about four-fifths of the median of the peer group in FY11. American Recovery and Reinvestment Act (ARRA) funds are included in Federal R&D in FY10 and FY11.



Total R&D Expenditures (\$000's)	2008	2009	2010	2011	2012
S&E UMA	\$152,884	\$156,216	\$164,854	\$176,545	\$178,207
S&E Peer Median	\$214,044	\$220,020	\$209,899	\$232,565	NA
Rank	8	8	7	8	NA

Federal R&D Expenditures (\$000's)	2008	2009	2010	2011	2012
UMA	\$80,432	\$80,950	\$97,937	\$107,683	\$115,280
S&E UMA	\$79,736	\$80,163	\$88,860	\$101,940	\$106,470
S&E Peer Median	\$102,771	\$96,483	\$114,136	\$128,714	NA
Rank	8	9	9	9	NA

Total R&D Expenditures per Tenure System Faculty

The Total R&D Expenditures dollars per faculty increased by 11% between FY2008 and FY 2012. Federal spending increased by 29% during the same period.

Total R&D Per Tenure System Faculty	2008	2009	2010	2011	2012
Total	\$156,037	\$161,149	\$168,805	\$173,253	\$172,681
Federal	\$80,032	\$81,194	\$89,235	\$105,675	\$103,169

Patent Applications

Presently, UMass Amherst files approximately one patent application for every \$6 million in sponsored research spending, which is on par with peer universities.

	FY 2008	FY 2009	FY 2010	FY 2011	FY 2012
UMA	33	27	28	29	26

License Income

License income received in FY 2012 nearly doubled from FY 2011. The campus received over \$650,000 in sponsored research support from its licensees and optionees in FY 2012. FY 2010 was a record-setting year in licensing income received and included a large one-time payment for a paid-up license.

	FY 2008	FY 2009	FY 2010	FY 2011	FY 2012
UMA	\$697,008	\$861,496	\$2,353,519	\$513,500	\$952,738

New Tenured/Tenure-Track Faculty Hired

The campus has made significant investments in tenure system faculty hires in recent years. There were 56 such hires in FY13. The campus remains committed to supporting the strongest faculty possible and increasing the number of tenure-system faculty.

	AY 2008-09	AY 2009-10	AY 2010-11	AY 2011-12	AY 2012-13
UMA	72	40	33	57	56

Change in Tenured/Tenure-Track Faculty

Fall 2012 saw a small one-year increase in the tenure-system faculty, and an increase of 34 since Fall 2007. This was the first time since 2001 that the number of faculty exceeded 1,000. Investment in faculty is required to maintain the campus as a nationally competitive public research university.

	Fall 2008	Fall 2009	Fall 2010	Fall 2011	Fall 2012	1-year Change
UMA	975	972	978	993	1,009	16

Change in Faculty FTE

Faculty full-time equivalent (both full and part-time) showed a one-year increase of 20 and has grown by 54 since Fall 2008. About two thirds of the growth has been accounted for by tenure system faculty.

	Fall 2008	Fall 2009	Fall 2010	Fall 2011	Fall 2012	1-year Change
UMA	1,266	1,254	1,264	1,300	1,320	20

Faculty Awards

UMass Amherst faculty members are recipients of many prominent awards in the arts, humanities, science, engineering and health fields. The number of awards has dropped in the past few years, and the UMA rank is near the bottom of the peer group.

	2007	2008	2009	2010	2011
UMA	11	14	12	8	6
Peer Median	11	11	14	13	11
Rank	6	3	6	8	8

National Academy Members

Several UMass faculty members have been elected to some of the most prestigious disciplinary organizations: the National Academy of Science, the National Academy of Engineering, or the Institute of Medicine. These are some of the highest honors academic faculty can receive. This number has remained stable over time. The campus ranks somewhat below its peers on this measure. The absence of a medical school limits the ability of UMA faculty to be elected to the IOM.

	2007	2008	2009	2010	2011
UMA	9	9	9	9	9
Peer Median	11	10	11	11	11
Rank	7	7	7	7	7

ACCESS AND AFFORDABILITY

Percent (In-State) Pell Grant Recipients

The proportion of in-state students receiving Pell Grants has decreased in the last few years and reverted to FY08 levels. The campus has significantly increased its need-based institutional grant aid to support these students. This rate is competitive with other flagship campuses.

	Fall 2007	Fall 2008	Fall 2009	Fall 2010	Fall 2011
UMA	23%	24%	25%	24%	23%

Percent Need Met for In-State Students Awarded Need-Based Aid

The campus remains committed to providing need-based aid for in-state undergraduates as it strives to provide a quality and affordable education.

	2007-08	2008-09	2009-10	2010-11	2011-12
UMA	88%	90%	91%	87%	86%

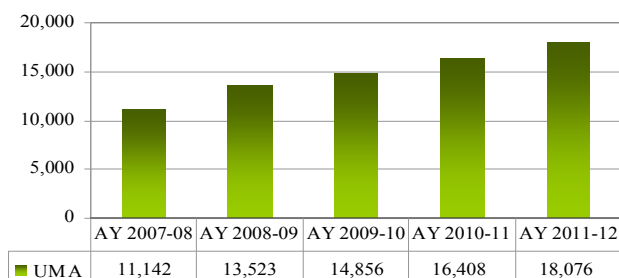
Percent Undergraduates from Massachusetts

The campus is committed to maintaining access to a quality education for residents of the Commonwealth. About four-fifths of UMass Amherst students enrolled in state-supported programs are residents of the state.

	Fall 2008	Fall 2009	Fall 2010	Fall 2011	Fall 2012
Number	15,521	15,953	16,046	16,211	16,090
Percent	80%	81%	80%	79%	78%

Online Course Enrollments

The Amherst campus offers six undergraduate and four graduate degree programs and five certificate programs that can be completed partially or fully online. These programs range from a certificate in Journalism and Criminal Justice Studies to a B.S. in Hospitality and Tourism Management, a Master's of Business Administration and a Doctorate in Nursing Practice. In addition, a variety of other courses are offered. Online course enrollments grew by 10% in the most recent year, and over 62% since AY2007-08.



Annual Growth in Online Course Enrollments

There has been considerable growth in online course enrollment on the Amherst campus in recent years. Enrollments have almost doubled since 2006-07. Online programs afford students flexibility in course-taking.

	AY 2007-08	AY 2008-09	AY 2009-10	AY 2010-11	AY 2011-12
UMA	21%	21%	10%	10%	10%

STUDENT SUCCESS AND SATISFACTION

Percent Undergraduates who are Students of Color

The Amherst campus is committed to enrolling a diverse student body. This is evidenced by the growth in the proportion of undergraduates (including CPE) who are students of color. Undergraduates enrolled in the past two years were the most diverse group of students in recent history.

	Fall 2008	Fall 2009	Fall 2010	Fall 2011	Fall 2012
Number	3,470	3,607	3,924	3,943	3,960
Percent	19.2%	20.1%	20.9%	20.9%	21.0%

Percent Undergraduates who are First Generation in College

Although most entering students have parents who are college-educated, many UMass Amherst students will be the first in their families to earn the baccalaureate. About one-fourth of entering first-year students are first generation.

	Fall 2008	Fall 2009	Fall 2010	Fall 2011	Fall 2012
Percent	26%	26%	29%	29%	26%

Percent Undergraduates with English as a Second Language

English is not the first language of about one-tenth of first-year students entering UMass Amherst. This is another indicator of the diversity of the campus.

	Fall 2008	Fall 2009	Fall 2010	Fall 2011	Fall 2012
Percent	7%	9%	9%	10%	10%

Percent Undergraduate Students who are International

The Amherst campus attracts a small number of undergraduate international students, many of whom are studying on the campus as part of an international exchange program. These numbers have increased by over two-thirds since Fall 2008. In contrast, almost one-fourth (1,416) of graduate students are international. The campus is exploring ways to increase the number of international undergraduate students.

	Fall 2008	Fall 2009	Fall 2010	Fall 2011	Fall 2012
Number	251	262	304	378	421
Percent	1%	1%	1%	2%	2%

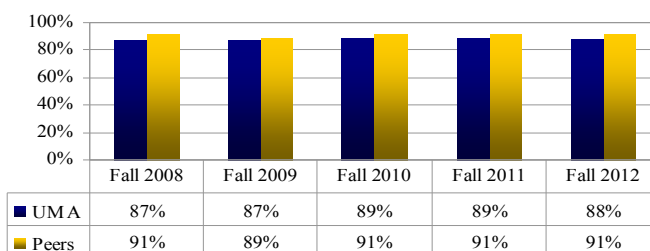
Number Undergraduates who Participated in a Study Abroad Program

About 1,100 UMass undergraduates participated in a study abroad experience during the 2011-12 academic year. The campus encourages students to take advantage of these enriching global learning opportunities.

	Fall 2007- Summer 08	Fall 2008- Summer 09	Fall 2009- Summer 10	Fall 2010- Summer 11	Fall 2011- Summer 12
UMA	1,015	1,031	1,035	1,117	1,074

Freshman One-Year Retention Rate

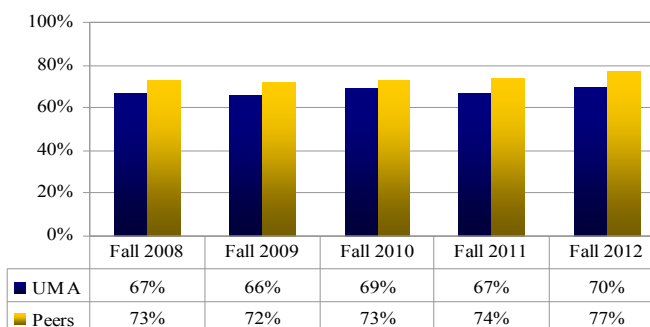
The one-year retention rate has been consistently high, but the relative position of UMass with respect to its peers has not changed. New strategies are being developed and implemented to improve the first-year experience and hence student retention. There were 4,669 entering full-time students in Fall 2011.



	Fall 2008	Fall 2009	Fall 2010	Fall 2011	Fall 2012
UMA Rank	8	8	7	7	7

Freshman Six-Year Graduation Rate

Seventy percent of full-time Amherst campus students graduate within six years of entrance from UMA, and another 11% receive their degree from another institution. This is the first time the rate has exceeded 70% since the campus began tracking graduation rates beginning with the fall 1984 entering cohort (64%). The 2012 rate remains below the peer median; but improvements in the four-year graduation rates suggest that the 6-year rates will continue to improve. Numbers reflect rates for the Fall 2002-Fall 2006 entering cohorts.



	Fall 2008	Fall 2009	Fall 2010	Fall 2011	Fall 2012
UMA Rank	7	11	8	9	8

Transfers (Full-Time) One-Year Retention Rate

The one-year retention rate for transfers has remained steady at 86%. This includes a small number of students who graduate in one year. Transfer students represent approximately one-fifth of the entering fall class.

	Fall 2008	Fall 2009	Fall 2010	Fall 2011	Fall 2012
UMA	85%	85%	86%	86%	86%

Transfers (Upper Division) Four-Year Graduation Rate

Almost three quarters of upper division transfers who enroll complete the baccalaureate degree within four years of entry. Many have already earned an Associate's degree. This surpasses the freshman six-year graduation rate. Upper Division transfers represent less than half of total transfer students. The rate has remained fairly stable over time. Numbers are reported for the Fall 2004-2008 cohorts.

	Fall 2008	Fall 2009	Fall 2010	Fall 2011	Fall 2012
UMA	72%	74%	73%	74%	74%

SERVICE TO THE COMMONWEALTH

Percent Alumni Who Live in Massachusetts

Over half of the 193,000 undergraduate students who earned a degree from UMA, and about two-fifths of the 50,000 recipients of the master's and doctorate degrees reside in Massachusetts. This number has been fairly consistent over time.

	Fall 2008	Fall 2009	Fall 2010	Fall 2011	Fall 2012
Undergraduate	55%	55%	56%	56%	54%
Graduate	41%	41%	41%	41%	39%
All	52%	52%	53%	53%	51%

Enrollment in STEM Programs

There are several initiatives on the Amherst campus to promote the enrollment and graduation of students in science, technology, engineering and mathematics (STEM) fields. Another goal is to increase the enrollment and persistence of underrepresented minorities in STEM. There has been an upward trend in the number and percent of undergraduates in STEM programs. Presently, 31% of undergraduate and 30% of graduate students are enrolled in such programs.

Undergraduate

	Fall 2008	Fall 2009	Fall 2010	Fall 2011	Fall 2012
Total	19,964	20,287	20,791	21,265	21,448
STEM	4,906	5,282	5,680	6,104	6,624
Percent STEM	25%	26%	27%	29%	31%

Graduate

	Fall 2008	Fall 2009	Fall 2010	Fall 2011	Fall 2012
Total	5,150	5,546	5,677	5,770	5,792
STEM	1,401	1,503	1,601	1,677	1,729
Percent STEM	27%	27%	28%	29%	30%

Grand Total STEM	6,307	6,785	7,281	7,781	8,353
Grand Total Percent STEM	25%	26%	28%	29%	31%

Degrees Awarded in STEM Fields

The upward trend in STEM enrollment has been mirrored in the number of degrees awarded. One-fourth of the 5,500 undergraduate degree recipients and over one-fourth of graduate degree recipients are awarded degrees in STEM fields.

Undergraduate

	2007-08	2008-09	2009-10	2010-11	2011-12
Total Degrees	4,707	4,860	5,090	5,290	5,470
STEM	886	936	1,096	1,150	1,381
Percent STEM	19%	19%	22%	22%	25%

Graduate

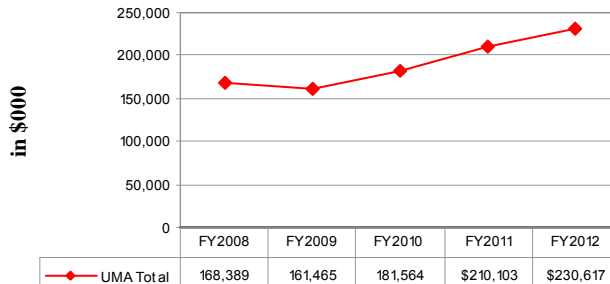
	2007-08	2008-09	2009-10	2010-11	2011-12
Total Degrees	1,561	1,431	1,513	1,661	1,683
STEM	428	355	361	387	452
Percent STEM	27%	25%	24%	23%	27%

Grand Total STEM	1,314	1,291	1,457	1,537	1,833
Grand Total Percent STEM	21%	21%	22%	22%	26%

FINANCIAL HEALTH

Endowment Assets and Annual Growth in Endowment

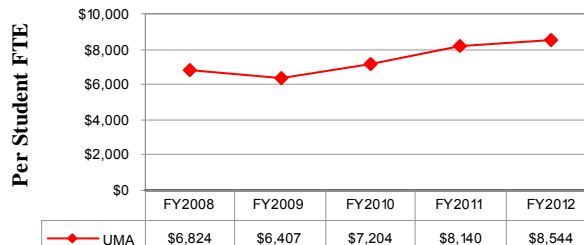
The campus endowment is one of the lowest in the country for a public flagship campus. In FY2012 the endowment increased due to gifts and better investment performance. The campus is in the midst of a \$300M fundraising campaign and expects to see growth in the endowment from increased gifts. In addition, investment earnings should increase as the economy continues to recover.



	FY 2008	FY 2009	FY 2010	FY 2011	FY 2012
Annual Change	25%	-4%	12%	16%	10%

Endowment per Annualized Student FTE

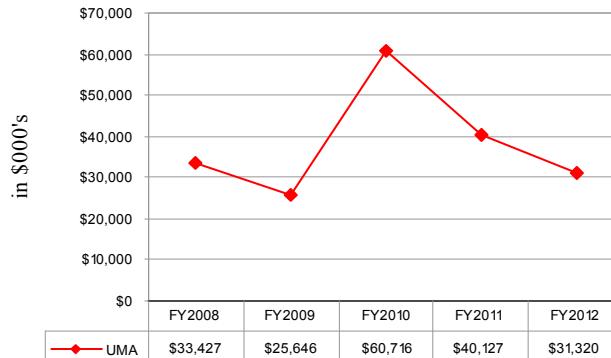
The campus endowment is one of the lowest in the country for a public flagship campus. FY09 saw a sharp decline in the annual growth due to the market downturn. FY2010, FY2011, and FY2012 have improved as the financial markets have improved. Steady growth is projected in endowment earnings due to improved financial markets as well as increased fundraising activities.



	FY 2008	FY 2009	FY 2010	FY 2011	FY 2012
Peers	\$14,915	\$11,137	\$10,840	\$12,309	\$14,226

Private Funds Raised Annually

The impact of the “UMass Rising: Campaign for UMass Amherst” is reflected starting in FY2010 punctuated with 8-figure gift commitments both in FY2010 and FY2011. Annual fluctuations can be expected through the course of the campaign when such large non-repeating gifts are received, but the general five year trend is projected to be higher than in previous years. Significant estate commitments are being solicited and received during the campaign period and are not reflected in this report.



Return on Net Assets

Return on net assets for the campus is above the peer average. The ratio will remain solid through FY13 and beyond as a result of an infusion of state funding for capital projects.

	FY 2008	FY 2009	FY 2010	FY 2011	FY 2012
UMA	8.0%	3.7%	11.8%	8.3%	11.3%
Peers	5.3%	2.1%	5.5%	6.5%	4.3%

Financial Cushion

Financial cushion represents an institution's capacity to sustain itself during difficult financial times. Although lower than its peers, the ratio for the Amherst campus still compares favorably. The financial cushion will decline over the next several years as accumulated unrestricted funds designated for capital improvements are spent on these projects and the net asset converts to Net Investment in Plant.

	FY 2008	FY 2009	FY 2010	FY 2011	FY 2012
UMA	19.3%	18.9%	25.9%	24.1%	24.8%
Peers	26.8%	25.3%	27.2%	31.2%	31.2%

Debt Service to Operations

The debt service ratio for the campus has grown as the campus continues its investment in infrastructure improvements. This ratio will escalate to 8% over the next five years as the campus invests in new classroom space, science laboratories, as well as a new residence hall.

	FY 2008	FY 2009	FY 2010	FY 2011	FY 2012
UMA	4.7%	5.9%	5.8%	5.7%	5.5%
Peers	4.8%	6.6%	5.7%	5.8%	6.0%

Deferred Maintenance per GSF

This ratio tracks the progress the campus anticipates making in reducing its deferred maintenance backlog over the next few years. It is based on currently identified projects in the capital plan with \$175 million of spending included in the five year projection for infrastructure improvements.

	FY 2008	FY 2009	FY 2010	FY 2011	FY 2012
UMA	\$208	\$194	\$149	\$164	\$162

DEFINITIONS AND SOURCES

ACADEMIC QUALITY INDICATORS

High School GPA of Freshmen. Cumulative GPA for college prep courses with additional weight to honor and AP courses, according to BHE admissions policy, reported on all first-year students.

Average SAT Scores of freshmen. Average SAT Scores of freshmen is based on the Arithmetic Mean. 25th & 75th percentile are based on combined SAT scores of all first-year students. Peer data are from IPEDS.

Average GPA of entering transfer students. Cumulative GPA for college-level courses transferred to UMA according to admissions policy.

Student Satisfaction with Educational Experience. Percent of seniors who responded “good” or “excellent” to the question, “How would you evaluate your entire educational experience at this institution?” on the National Survey of Student Engagement administered in Spring 2011.

Doctoral degrees awarded. Number of Doctorates awarded for the academic year 2012, which includes August 2011, January 2012, and May 2012 award dates. These include both Research/Scholarship and Professional Practice Doctorates. Peer comparison data are based on Research/Scholarship doctorates only.

Postdoctoral Appointees. The number of postdoctoral appointees as reported to NSF.

Total R&D Expenditures. R&D expenditures in all academic fields from all sources (federal, state, local governments, industry, private and institutional) as reported to NSF. Peer data reported in The Top American Research Universities. Beginning 2010 data are from NSF. Peer comparison data are based on S&E R&D.

Total Research Expenditures per Tenure System Faculty. R&D expenditures in all academic fields from all sources (federal, state, local governments, industry, private and institutional) as reported to NSF, divided by total tenure system faculty as reported to IPEDS. Peer data reported in The Top American Research Universities. Beginning in 2010 data reported by NSF.

Patent Applications. Number of U.S. Patent applications filed per year. Data Source: Data reported by campuses to UMass President’s Office, Office of CVIP.

License Income. Amount of annual income from license agreements. Data Source: Data reported by campuses to UMass President’s Office, Office of CVIP.

New Tenured/Tenure-track Faculty. The number of new tenured/tenured-track faculty members hired to start their new positions in the academic year.

Change in Tenured/Tenure-track Faculty. The difference in the number of tenured/tenure-track faculty from one fall semester to the next. Includes faculty members who are on paid leave. Does not include individuals whose primary responsibility is administrative. For the 2013 PMS report, the difference will be between the figure for Fall 2012 and Fall 2011.

Change in Faculty FTE. The difference in the total FTE, from one fall semester to the next, for all full-time and part-time instructional faculty teaching state-supported courses. Includes faculty members who are on paid leave. Does not include individuals whose primary responsibility is administrative. For the 2013 PMS report, the difference will be between the figure for Fall 2012 and Fall 2011. Definition of Faculty FTE is per the Common Data Set, and includes all faculty teaching credit courses, including credit courses offered via Continuing Education.

Faculty Awards. Number of faculty with awards from a list of 24 prominent grant and fellowship programs in the arts, humanities, science, engineering and health fields (e.g., Fulbright American Scholars, Guggenheim Fellows, MacArthur Foundation Fellow, National Endowment for the Humanities Fellows, NSF Career Awards, Sloan Research Fellows). Data reported in The Top American Research Universities and were obtained from directories or web based listings.

National Academy Members. Number of faculty with active or emeritus status who have been elected to membership in the National Academy of Sciences, the National Academy of Engineering, or the Institute of Medicine. Data reported in The Top American Research Universities.

ACCESS AND AFFORDABILITY INDICATORS

Percent Pell Grant Recipients (In-State). Federal Pell Grants are awarded to low-income undergraduates based on their expected family contribution. Data as reported by campuses to the UMass President’s Office of in-state students with Pell Grants in the Financial Aid Template.

Percent of Need Met for In-State Students Awarded Need-based Aid. The average percentage of demonstrated financial need that is met by the institution’s award of need-based financial aid to undergraduate students. Data as reported to the UMass President’s Office in the Financial Aid Template.

Percentage Undergraduate from Massachusetts.

Percentage of total undergraduate students who currently reside in Massachusetts based on tuition residency and/or permanent address for continuing education students.

Online Course Registrations. Enrollments or course registrations for the academic year for online credit courses. Academic year includes summer, fall, intersession, and spring. These do not include hybrid courses, but fully online only offered via *UMassOnline*.

Annual Growth in Online Course Registrations.

Percentage rate of growth in enrollments or course registrations for the fiscal year for online credit courses. Fiscal year includes summer, fall, intersession, and spring. These do not include hybrid courses, but fully online only offered via *UMassOnline*.

STUDENT SUCCESS AND SATISFACTION INDICATORS**Percent Undergraduate who are Students of Color.**

Undergraduates who are African American/Black, American Indian/Alaska Native, Asian, Hawaiian/Pacific Islander, More than One Race, or Hispanic/Latino divided by total U.S. citizens and permanent residents who report race/ethnicity. Due to recent changes in IPEDS race and ethnicity classifications, trend data on students of color should be viewed with caution.

Percent Undergraduates who are First Generation in College.

First-generation college students are defined as those students with neither parent having earned the bachelor's degree. Data are from Cooperative Institutional Research Program (CIRP) Freshman Survey.

Percent Undergraduates with English as a Second Language. Percentage of undergraduates whose first language was not English. Data are from Cooperative Institutional Research Program (CIRP) Freshman Survey 2011.

Percent Students who are International. Percentage of all undergraduates who are studying at the university on a student visa. International students include all eligible visa types as long as they are enrolled for a credit course; i.e., international students do not include U.S. citizens, U.S. permanent residents or refugees.

Number Undergraduates who Participated in a Study Abroad Program. Data are numbers of students who participated in a credit bearing study abroad program as reported on the Institute of International Education Open Doors survey for Fall 2011 through Summer 2012.

Freshmen One-Year Retention Rate. Percent of first-time, full-time freshmen who entered in previous fall and were

still enrolled at UMA as of the next fall. Peer data as reported to IPEDS.

Freshmen Six-Year Graduation Rate. Percent of first-time, full-time freshmen who entered in a given fall and had graduated within six years from UMA. Peer data as reported to IPEDS.

Transfer (full-time) One-year Retention Rate. Percent of full-time transfer students at any level who entered in the prior fall and were still enrolled at UMA or graduated as of the next fall.

Transfer (Upper-Division) Four-year Graduation Rate. Percent of full-time upper division transfers (60+ credits) who entered in a given fall and had graduated within four years from UMA.

SERVICE TO THE COMMONWEALTH INDICATORS

Percent of alumni who live in Massachusetts. Percentage of total alumni who currently reside in Massachusetts based on alumni records.

Enrollment in Science, Technology, Engineering, and Mathematics (STEM) Programs. Unduplicated count of students enrolled in STEM programs. STEM programs are those fields of study defined in the National Science & Mathematics Access to Retain Talent (SMART) Grant with the exclusion of foreign languages. Enrollment count includes undergraduate, graduate and certificate students.

Degrees Awarded in STEM Fields. Number of undergraduate and graduate degrees and certificates awarded in STEM fields. STEM fields are those defined in the National Science & Mathematics Access to Retain Talent (SMART) Grant with the exclusion of foreign languages.

MTEL Science & Math Test-Takers. Total number of students who took the Massachusetts Tests for Educator Licensure (MTEL) subject tests in science and math fields.

FINANCIAL HEALTH INDICATORS

Endowment Assets and Annual Growth in Endowment. Annual growth in total UMass Amherst endowment balance.

Endowment per Annualized Student FTE. Total UMass Amherst endowments per annualized FTE student, where FTE of peer institutions is standardized to UMass formula.

Private Funds Raised Annually. Private funds raised includes restricted and unrestricted revenues from individuals, foundations, corporations and other organizations. Includes private grant revenues but not private contract revenues. Totals for each year include

pledges made in that year as well as the value of in-kind contributions.

Return on Net Assets. Increase/decrease in net assets divided by total net assets at beginning of the year. Peer data from published financial statements.

Financial Cushion. Unrestricted net assets as a percentage of total operating expenditures. Peer data are from published financial statements.

Debt Service to Operations. Debt service as a percentage of total operating expenditures. Peer data are from published financial statements.

Deferred Maintenance per GSF. Deferred Maintenance per Gross Square Footage includes deferred and other maintenance dollars needed to maintain the current function of the campus, calculated by the “Sightlines” Return on Physical Assets methodology (ROPA sm) and shown per square foot of space.

PEER INSTITUTIONS FOR UMASS AMHERST

Indiana University-Bloomington

*Iowa State University

*Rutgers University System

Stony Brook University

*University of California-Santa Barbara

*University of Colorado-Boulder

*University of Connecticut System

University of Delaware

*University of Maryland-College Park

University of Oregon

***Financial Peer**

Please Note: Unless otherwise specified, all data are from the Campus Office of Institutional Research.