

Impact of Plainridge Park Casino (PPC) on Traffic Issues in Plainville

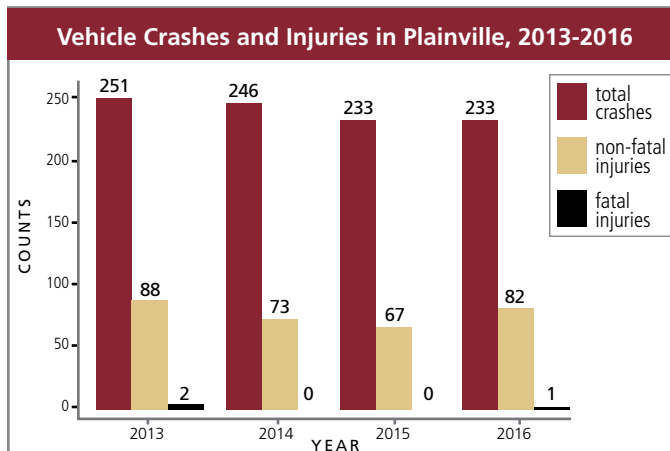
This fact sheet provides an overview of the traffic conditions before and after the construction (beginning in April 2014) and opening (June 2015) of PPC. Traffic volumes, crashes, and complaints were studied in Plainville and the surrounding communities of Attleborough, Foxborough, Mansfield, North Attleborough, and Wrentham. For more information see the [Social and Economic Impacts of Plainridge Park Casino: 2018](#) report.

There was no change in the number of crashes or injuries in Plainville from before, during, or after the construction of PPC.

Traffic Collisions and Complaints in Plainville and the PPC H&SC Recorded by Plainville Police			
	2010-2015 Average	2016-2017 Average	% Change
Plainville			
Traffic Collisions	312.0	329.0	5.4% increase
Traffic Complaints	234.8	329.5	40.3% increase
Plainridge Park Casino H&SC			
Traffic Collisions	4,583.2	4,975.0	8.5% increase
Traffic Complaints	1,692.4	1,946.5	15.0% increase

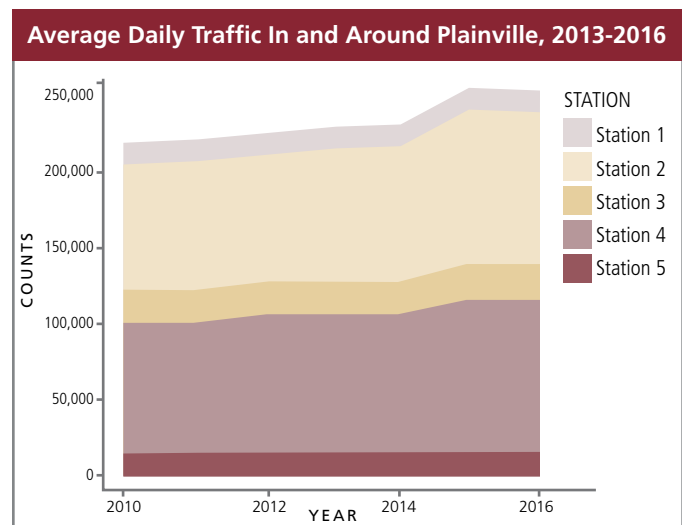
Source: [Analysis of changes in police data after two years of operation at Plainridge Park Casino \(Bruce, 2018\)](#)

Plainville did experience a 9% increase in traffic volume between 2014 and 2016 compared with earlier years.



Source: [MA Department of Transportation](#)

The average number of recorded traffic collisions and complaints did increase in the two years after PPC's opening compared to the five years prior. This was likely due to an increased number of visitors to the area.



Source: [MA Department of Transportation](#)

SEIGMA PROJECT OVERVIEW

SEIGMA is a project that uses experts from several disciplines to carry out the different parts of the Massachusetts Gaming Commission's research effort. The project team is dedicated to working closely with many other groups throughout the Commonwealth. The study uses a state-of-the-art design, rigorous data collection and research methods, and a careful analytic approach to establish the effects of casino gambling at state, regional, and local levels. The SEIGMA team collects its own data as well as using data gathered by other organizations. The SEIGMA study is funded by the Massachusetts Gaming Commission.