

name:

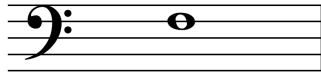
date:

— *Practice Exam Version 1* —
University of Massachusetts
Graduate Diagnostic Examination
in Music Theory (Jazz)

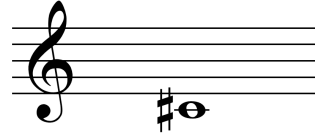
Make no marks on this page below this line

area	results
Rudiments <i>[1 point each]</i> 1 2 3 4 5 6 7 8 9 10	<i>[7 points needed to pass]</i>
Advanced chords and scales <i>[1 point per chord]</i> 11 12 13 14 15 <i>[1 point per scale]</i> 16 17 18 19 20	<i>[7 points needed to pass]</i>
Harmonic analysis <i>[20 points at 1 point per chord]</i>	<i>[14 points needed to pass]</i>

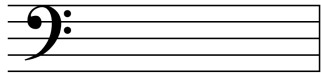
(1) Write the pitch that is a perfect fifth (P5) *below* the given pitch. [1 point]



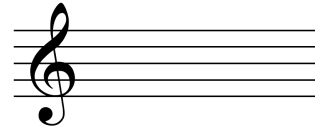
(2) Write the pitch that is a minor seventh (m7) *above* the given pitch. [1 point]



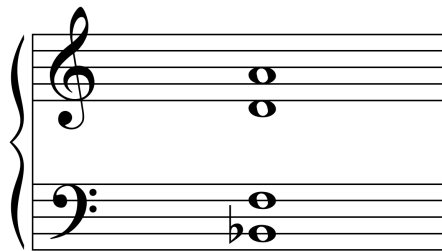
(3) Write an A-major triad in second inversion. [1 point]



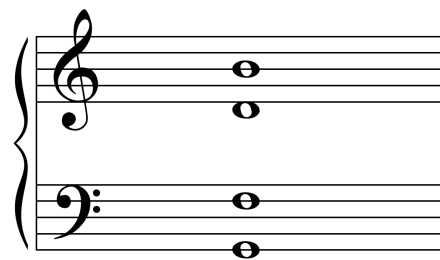
(4) Write a B-major triad in first inversion. [1 point]



(5) Add accidentals to the upper three voices of the following chord to form a minor-minor seventh chord. Do not add any accidentals to the bass note. [1 point]



(6) Add accidentals to the upper three voices of the following chord to form a half-diminished seventh chord. Do not add any accidentals to the bass note. [1 point]



(7) Add three pitches above the given pitch to complete the given figured bass.
[1 point]

(8) Add three pitches above the given pitch to complete the given figured bass.
[1 point]

(9) Here is a pitch:

Rewrite the pitch in each of the following clefs. Keep the pitch in the same octave.
[1 point]

(10) Here is an excerpt for Trumpet in B-flat. This is the part the player reads. Rewrite the excerpt at concert pitch in the proper octave on the blank staff below. [1 point]

Trumpet in B \flat

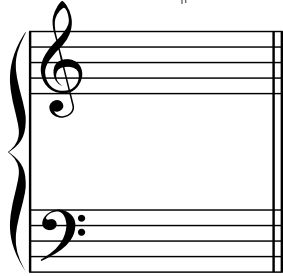
Presto

ff *subito p*

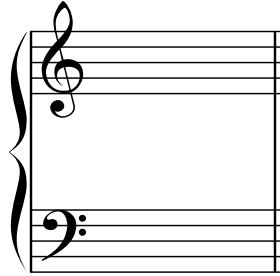
concert pitch

For Questions 11–15, spell the chord indicated. [1 point per chord]

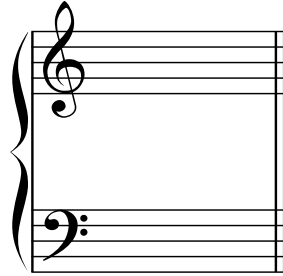
(11) $E_b^7(\sharp 11)$

A blank musical staff with a treble clef on top and a bass clef on the bottom, enclosed in a brace on the left. The staff is empty, intended for the student to write the chord spelling for $E_b^7(\sharp 11)$.

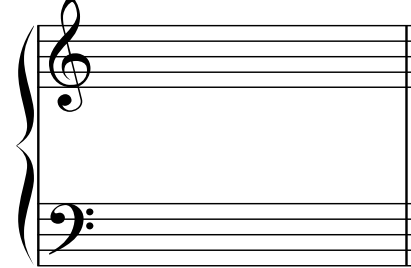
(12) $A^\circ(\text{maj}7)$

A blank musical staff with a treble clef on top and a bass clef on the bottom, enclosed in a brace on the left. The staff is empty, intended for the student to write the chord spelling for $A^\circ(\text{maj}7)$.

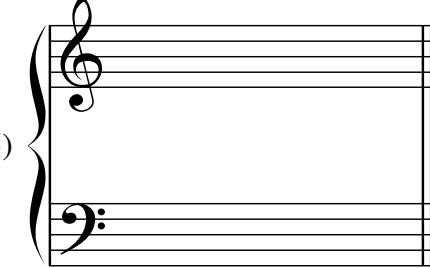
(13) $D_b^{\text{maj}7}(\sharp 5)$

A blank musical staff with a treble clef on top and a bass clef on the bottom, enclosed in a brace on the left. The staff is empty, intended for the student to write the chord spelling for $D_b^{\text{maj}7}(\sharp 5)$.

(14) E_m^9

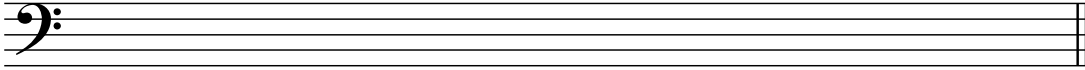
A blank musical staff with a treble clef on top and a bass clef on the bottom, enclosed in a brace on the left. The staff is empty, intended for the student to write the chord spelling for E_m^9 .

(15) $B_b^{13}(\text{sus}^4)$

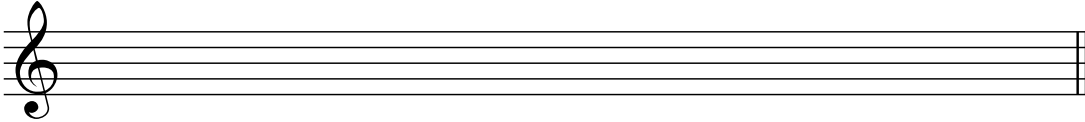
A blank musical staff with a treble clef on top and a bass clef on the bottom, enclosed in a brace on the left. The staff is empty, intended for the student to write the chord spelling for $B_b^{13}(\text{sus}^4)$.

For Questions 16–20, spell the scale indicated. [1 point per scale]

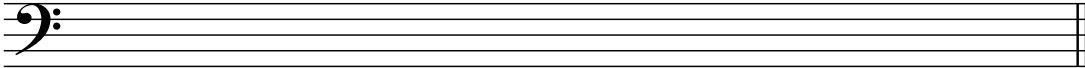
F Mixolydian

(16) 

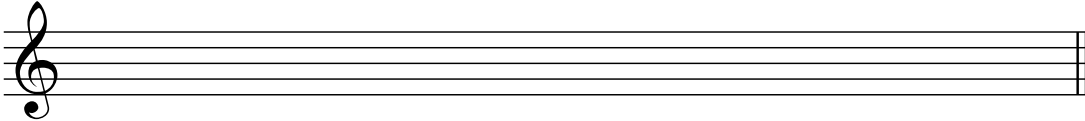
B Melodic Minor

(17) 

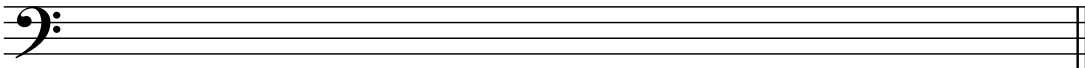
G-sharp Phrygian

(18) 

D Diminished

(19) 

G Dorian

(20) 

Analyze each harmony in the passage below. Identify Roman numerals, chord functions, and any modulations where appropriate. [20 points at 1 point per chord]

1 E7 Am7 D7

7 Dm7 G7 Cmaj7 E7 A7

14 Dm7 Fmaj7 Fm7 Fm6

19 Em7 A7 Dm7 G7 C6 Eb7 Dm7 G7