

ZUBE LECTURE SERIES

Thursdays 4-5 pm

Design Building 170

Spring 2017

2/2

Robert Pirani

Restoration and Adaptation
in the NY-NJ Harbor

2/16

Mei Po Kwan

The Uncertain Geographic
Context Problem:
Implications for Population
and Health Research

2/23

Matthew

Cunningham

Current Projects of Matthew
Cunningham Landscape
Design LLC

3/2

Carolina Aragón

Energy Gardening

3/23

Elizabeth Hahn

Massachusetts Downtowns:
Efforts at the State Level

4/6

LA Alumni Panel

4/12

Wednesday

Joanne Westphal

Using Predictive Capacity
to Improve Therapeutic Site
Design

4/13

Victoria Basolo

Housing and Climate
Adaptation

4/13

6:00PM

Bernard Tschumi

Architecture Concepts

*Co-host with Five Colleges Architectural Studies,
Amherst College, Hampshire College, Mount Holyoke
College, Smith College, and UMass/ A&S

4/20

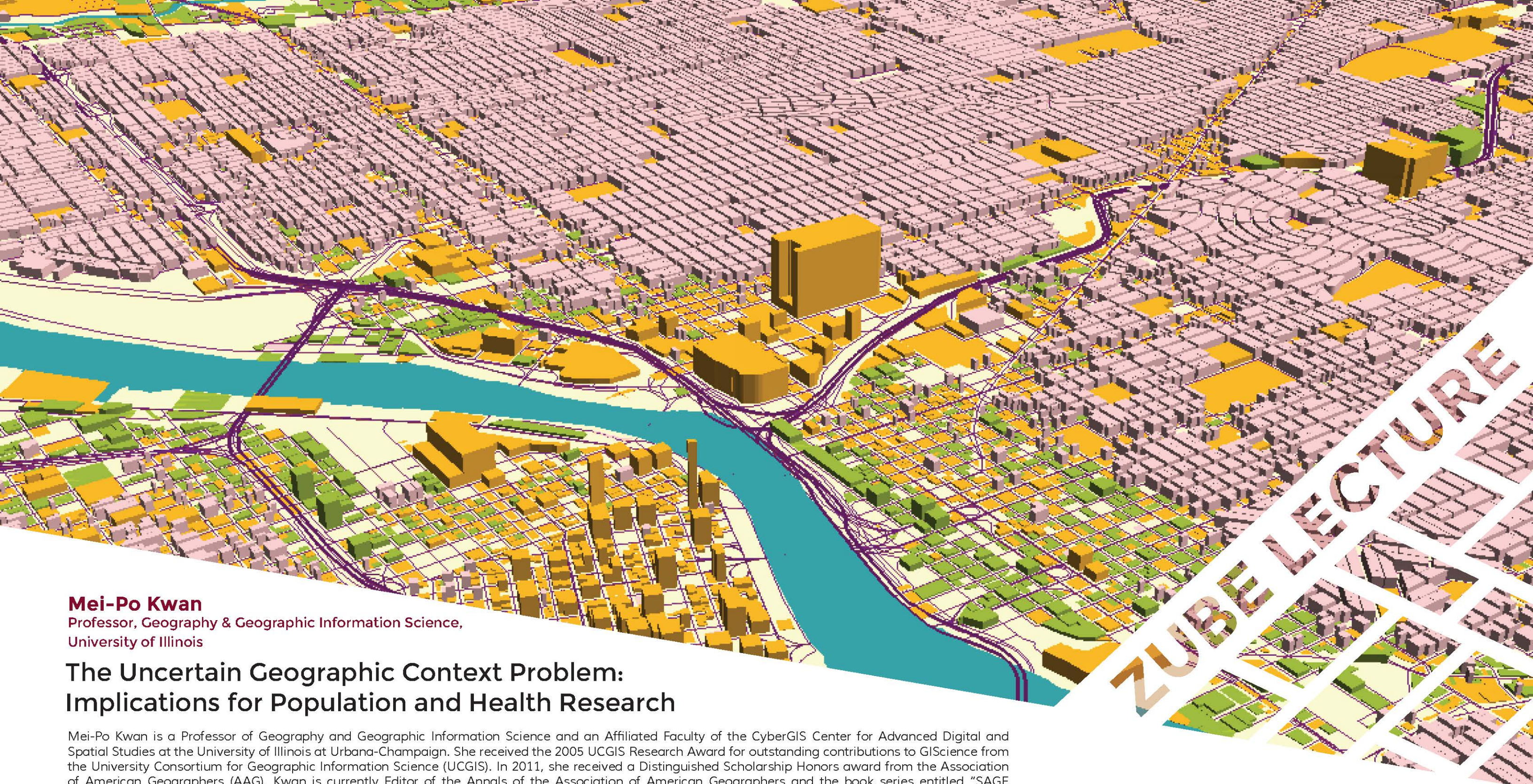
Dirk Sijmons

Landscape Architecture and
Urbanism

LA&RP Landscape Architecture
& Regional Planning

UMassAmherst

Background image featuring Carolina Aragón's art installation "High Tide" by Matt Conti.



Mei-Po Kwan

Professor, Geography & Geographic Information Science,
University of Illinois

The Uncertain Geographic Context Problem: Implications for Population and Health Research

Mei-Po Kwan is a Professor of Geography and Geographic Information Science and an Affiliated Faculty of the CyberGIS Center for Advanced Digital and Spatial Studies at the University of Illinois at Urbana-Champaign. She received the 2005 UCGIS Research Award for outstanding contributions to GIScience from the University Consortium for Geographic Information Science (UCGIS). In 2011, she received a Distinguished Scholarship Honors award from the Association of American Geographers (AAG). Kwan is currently Editor of the Annals of the Association of American Geographers and the book series entitled "SAGE Advances in Geographic Information Science and Technology." She is Associate Editor of Travel Behaviour and Society, and an editorial board member of the Journal of Transport Geography, Applied Geography, and Geographical Analysis. She has made outstanding contributions to geographic information science and geography, especially in developing geocomputational algorithms for implementing space time accessibility measures that are sensitive to individual differences, 3D interactive geovisualization, network-based 3D topological data models, GIS-based intelligent emergency response systems (GIERS), the protection of geoprivacy through geographical masks, and computational-process modeling of activity-travel decisions.

Thursday 2/16/17



Matthew Cunningham

Principal, Matthew Cunningham Landscape Design LLC

Current Projects of Matthew Cunningham Landscape Design LLC

Matthew Cunningham is an award-winning landscape architect who derives immeasurable passion from the landscapes of New England and from his roots in the verdant, rocky coast of rural Maine. He combines 25 years of plant expertise with a deep appreciation of local history and traditional Yankee building techniques. He has committed his career to merging excellence in design with ecologically sustainable principles. Each of his landscapes bridges clients' indoor and outdoor lifestyles. He is a hands-on professional and works closely with only the finest craftspeople to ensure beautiful and robust landscapes that feel almost instantly contextual, established, and mature.

Matthew holds landscape architecture degrees from the Harvard University Graduate School of Design (MLA II) and from the College of Social and Behavioral Sciences at the University of Massachusetts Amherst (BSLA). His distinguished academic record includes Certificates of Honor from the American Society of Landscape Architects at both institutions. Prior to starting his practice in 2004, he worked for the renowned firm Reed Hilderbrand Associates where he contributed to dozens of nationally celebrated design projects.

Matthew's gardens have been widely published in New England Home, Design New England, Architectural Digest, The Designer, and Garden Design Magazine. His firm was named "Best of Boston Home" by Boston Home Magazine in 2013 and 2016 and "Best of Houzz" by Houzz.com for 2013, 2014, 2015, and 2016. In April of 2013, Matthew was also named a 2013 "Five Under Forty" award winner by New England Home Magazine, the first landscape architect to receive the honor.

ZUBE LECTURE

Thursday 2/23/17



Carolina Aragón
Assistant Professor, Landscape Architecture, UMass

Energy Gardening

Carolina Aragón is a public artist and an Assistant Professor in the Landscape Architecture and Regional Planning Department at the University of Massachusetts Amherst. Her artwork seeks to connect communities to their local landscapes by creating interactive installations that act as environmental sensors, and engaging communities in the creation of landscape inspired art pieces. Her work seeks to appeal to the visceral and the intellectual, sharpening our senses and heightening our understanding of the world around us. As an artist and academic, her research and creative work focus on public art as a medium to experiment with innovative materials, transform urban landscapes, and engage communities.

Carolina's work has been recognized by the BSLA Western Massachusetts chapter, and has been displayed in the National Park Service's "100 Years of Arts in the Parks." Some of her most recent work includes "High Tide," a kinetic temporary installation on the RFK Greenway in Boston that helps visualize the potential future flooding due to projected sea level rise, and her "Photoluminescent Labyrinth" which demonstrated the application of self-illuminating materials to create engaging outdoor spaces.

ZUBELECTURE

Thursday 3/2/17

Ann & Robert H. Lurie Children's Hospital, Chicago, IL by Mikyoung Kim Design

Joanne M. Westphal

PhD, DO, FASLA, FCELA

Professor Emeritus,
Landscape Architecture, Michigan State University

Using Predictive Capacity to Improve Therapeutic Site Design

Joanne M. Westphal, ASLA, AMA, AOA is a practicing landscape architect and licensed physician in Michigan. A member of the School of Planning, Design, and Construction at Michigan State University for 28 years, she recently retired from the program in May, 2015. Her specialty areas continue to involve environmental planning, therapeutic site design, regional landscape design, and research methodology. Dr. Westphal has focused on issues of the built environment, including place identity, visual management, design in medicine, post-construction evaluation of planning & design projects, resource sustainability, and open space protection.

Her research interests encompass two broad areas of the environment: 1) factors that affect human health in the built environment, and 2) issues affecting landscape assessment, regional planning, landscape identity, and resource protection. Current work has tended to focus on design theory affecting highly vulnerable populations like dementia patients, stroke victims, or individuals subjected to traumatic brain injury. However, work continues on land use issues in rural and urban areas, including visual management, environmental knowing, place identity, farmland preservation, and spatial orientation in unfamiliar environments.

ZUBE LECTURE

Wednesday 4/12/17

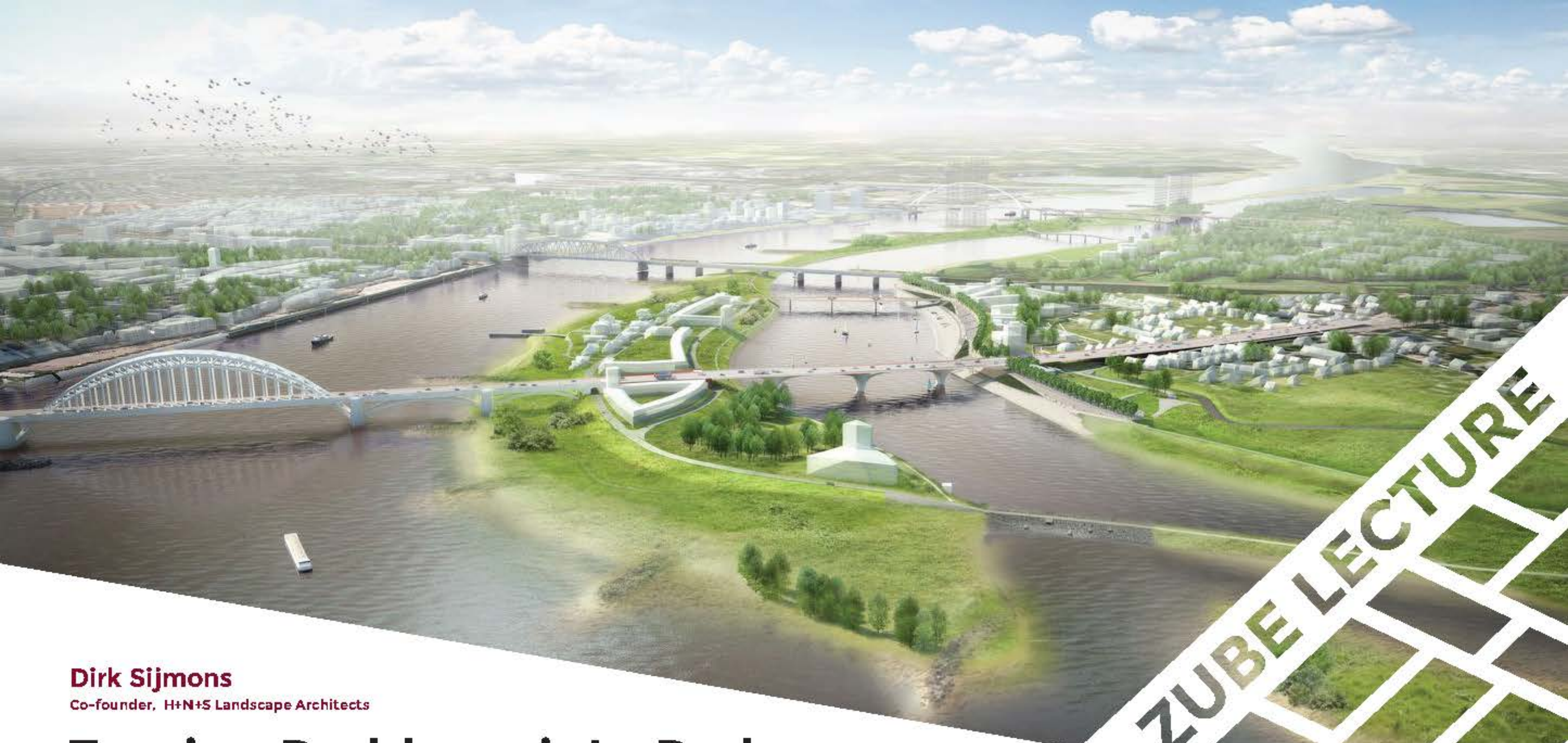


Victoria Basolo PhD, AICP
Professor, Urban Planning and Public Policy, UC Irvine

State Housing Policies: The Emergence of a New “new” Federalism?

Victoria Basolo, Ph.D., AICP, is an Associate Professor in the Department of Planning, Policy, and Design at the University of California, Irvine (UCI) and affiliated faculty for the Program in Demographic and Social Analysis. Her research interests include housing and economic development policy, intergovernmental relations, urban politics, public choice theory, institutional theory, disaster preparedness, and regionalism. Her work has been funded by the National Science Foundation, California Policy Research Center, the U.S. Department of Housing and Urban Development, the National Center for the Revitalization of Central Cities, as well as local governments and nonprofit organizations.

Thursday 4/13/17



ZUBE LECTURE

Dirk Sijmons

Co-founder, H+N+S Landscape Architects

Turning Problems into Parks

Dirk Sijmons (1949) Worked at several Ministries and the State Forestry Service (1977-1989). In 1990 he was one of the founders of H+N+S Landscape-architects. H+N+S received the Prince Bernard Culture award in 2001. In 2002 he received the Rotterdam-Maaskant award. His book publications in English are = Landscape (1998), Greetings from Europe (2008), Landscape and Energy (2014) & Moved Movement, (2015). Sijmons was appointed first State Landscape Architect of the Netherlands (2004-2008). He held the chair of Environmental Design (2008-2011) and that of Landscape Architecture (2011-2015) at the TU-Delft. Dirk Sijmons was the curator of IABR--2014 themed Urban-by-Nature.

Thursday 4/20/17