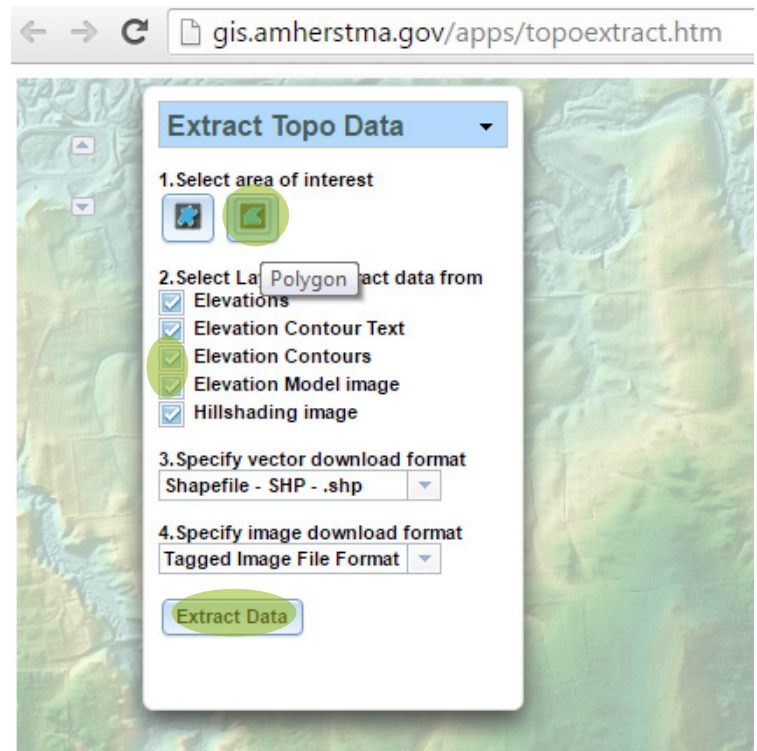


## Get Data - Amherst GIS Data

<https://www.amherstma.gov/1432/Get-Amherst-GIS-Data>

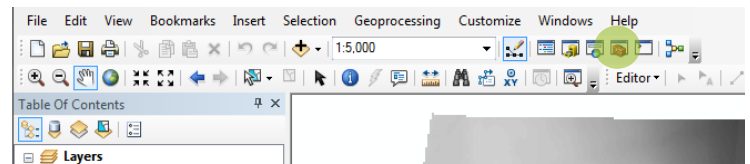
- Choose Topo data
- Select area of interest
- check **Elevation Contours** & **Elevation Model image**
- Extract Data
- Unzip the data folder to the same location as your other gis data files.



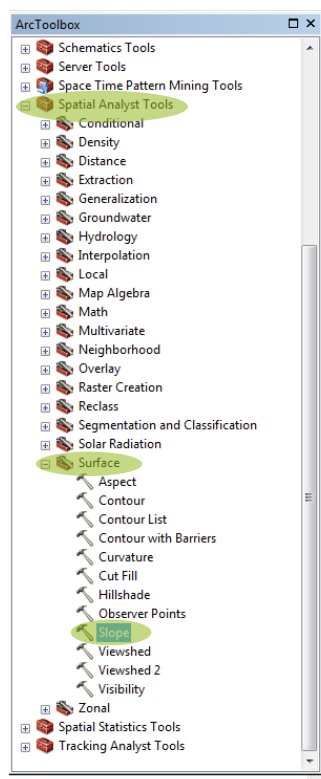
## Open Topo Data in ArcMap

## Generate Slope map from Elevation Model

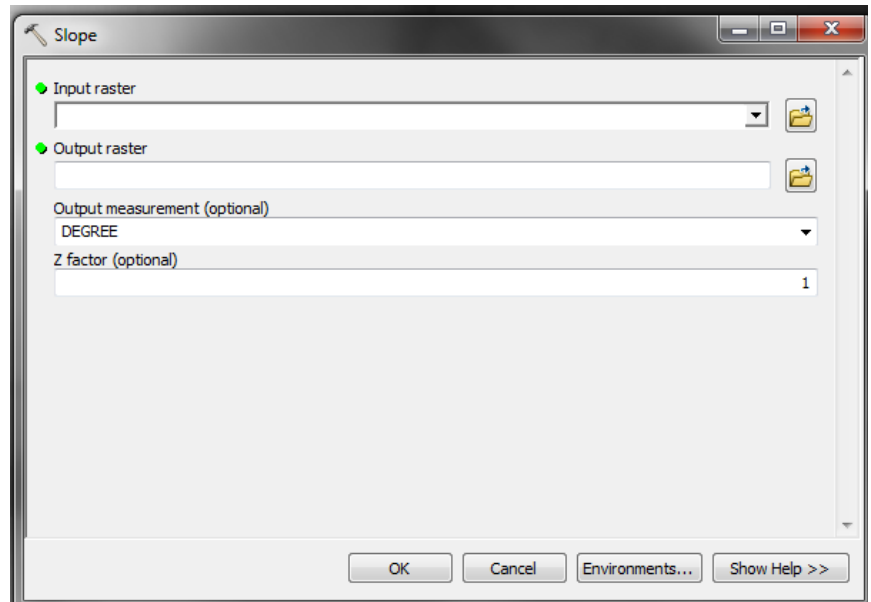
- Open ArcToolBox - Spatial Analysis Tools
- Surface - Slope



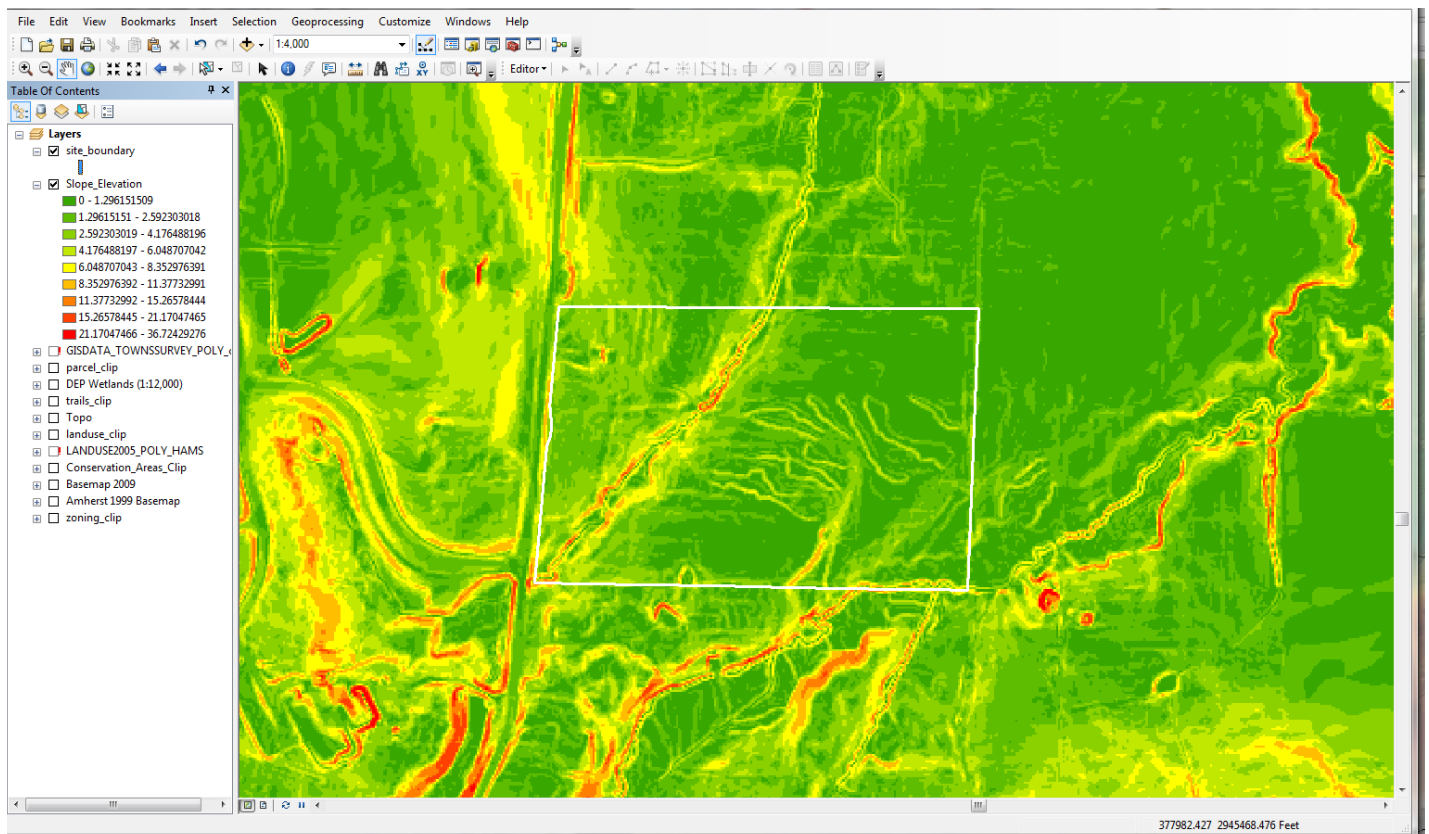
To activate the Spatial Analyst Tool:  
**Customize - Extentions**  
- check "Spatial Analyst"



- **INPUT RASTER**  
Choose the Elevation Model
- **OUTPUT RASTER** is the new raster that will be created.  
Remember NO SPACES IN FILE NAME.
- **OK.** The system will process and the new raster will be added to the map.



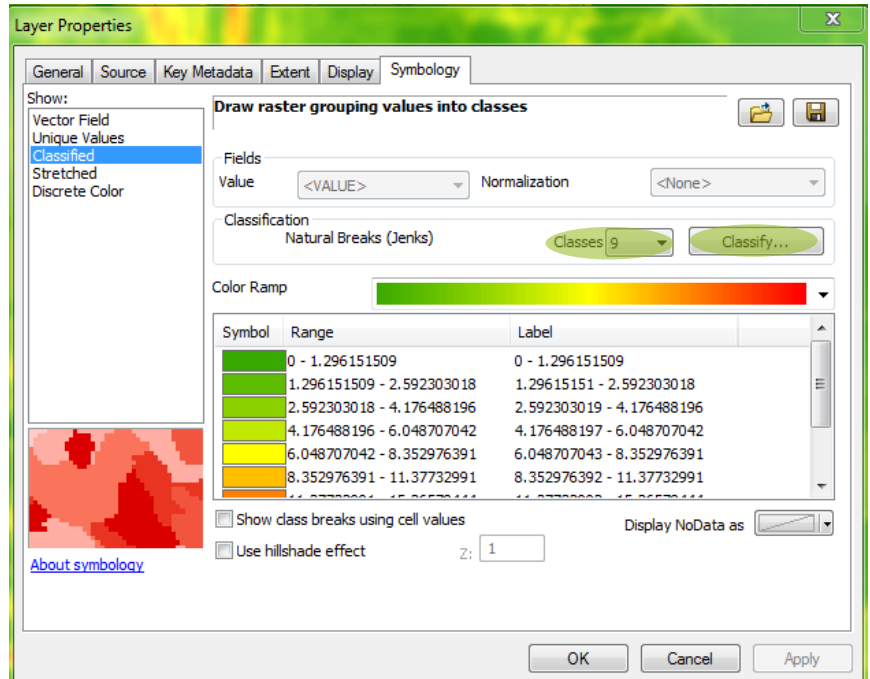
Your Map should look like this...



## Edit Symbols & Labels

Double click the layer name to open **LAYER PROPERTIES - Symbology - Classified**

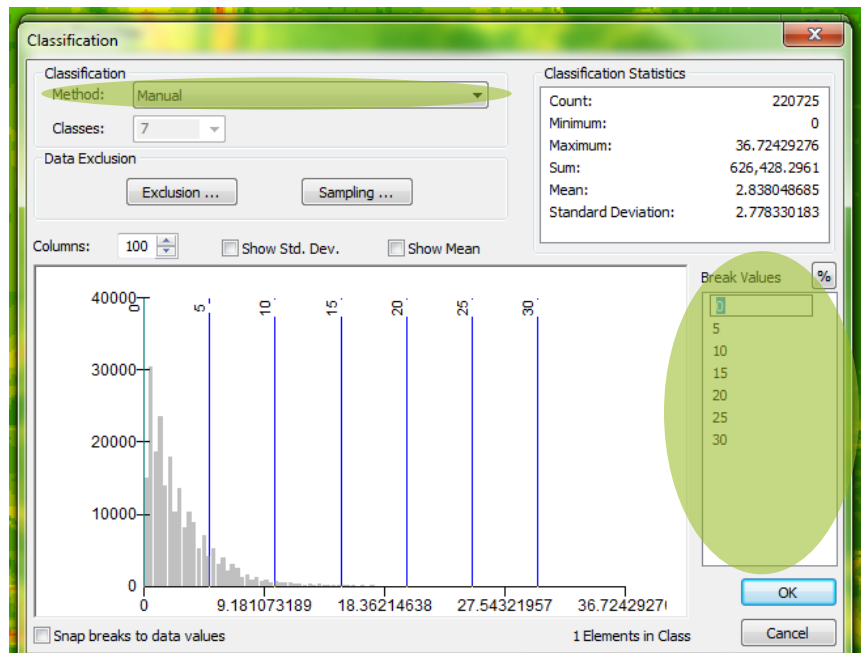
Choose the number of classes - Classify



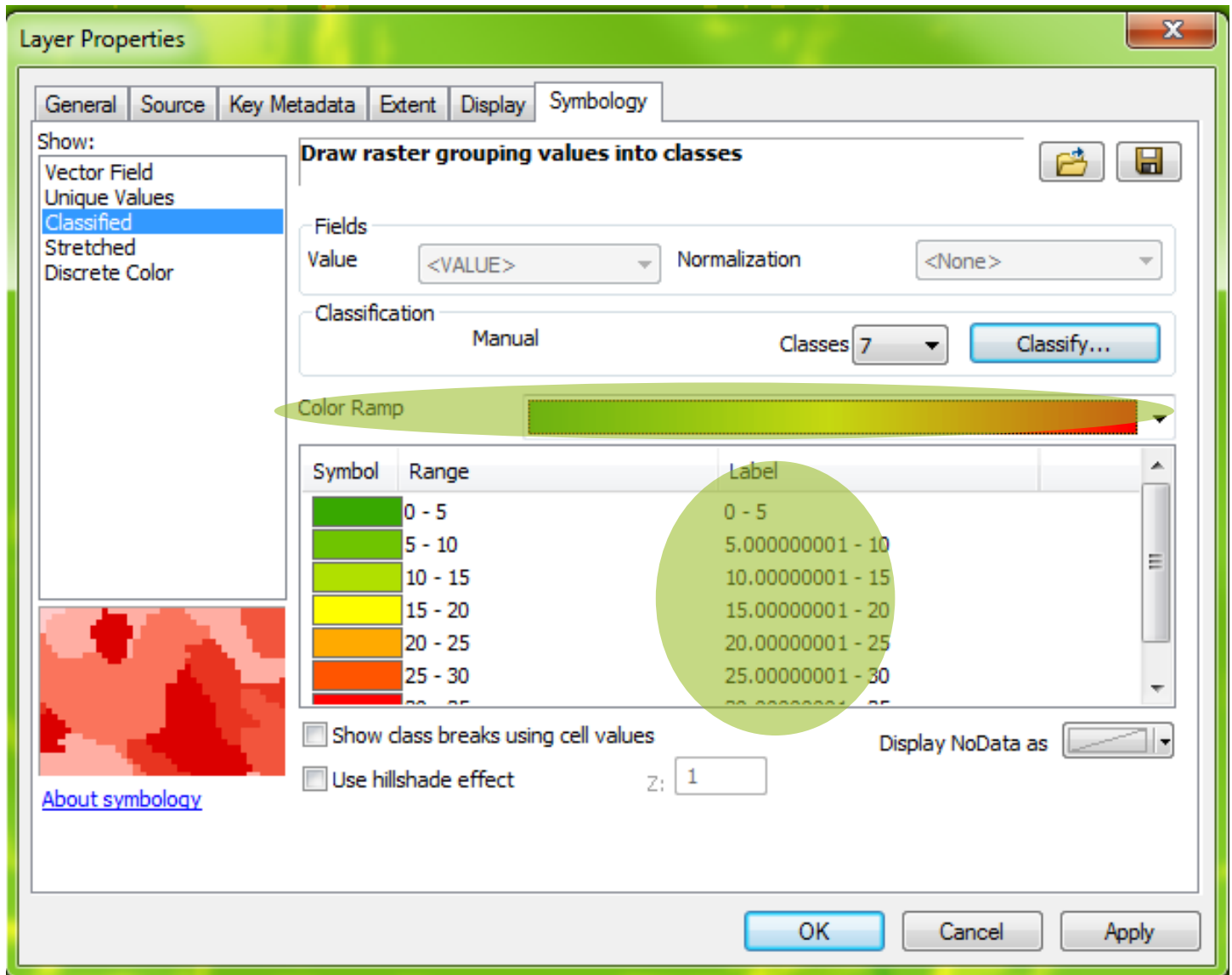
Classification Method - Manual

Click to edit Break Values

OK



Your Symbology should look like this...



You may change the "Label" so it reads the same as the "Range".  
You may change the Color Ramp as well.  
Then, click on "OK"