

HMRC Technical Note of *Kwan-Jin Jung, Ph.D.*

Subject: Standard Images in fMRI Tools

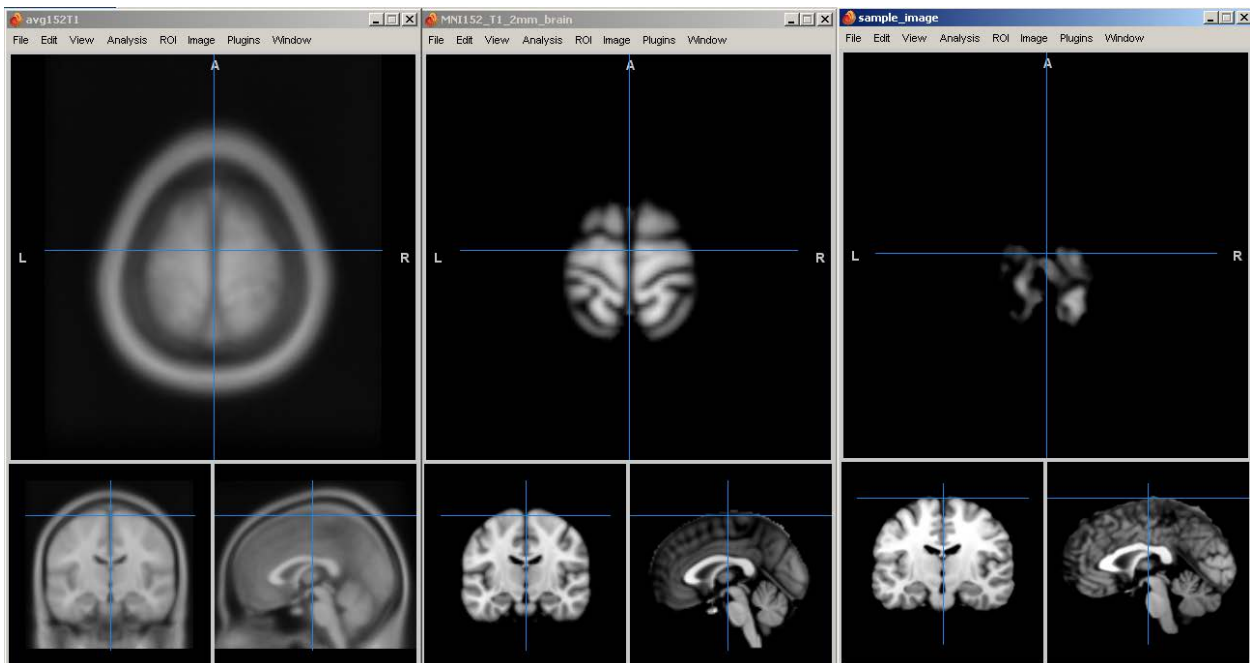
Introduction

There are differences in standard images of fMRI tools, which can introduce errors in registration and atlas naming.

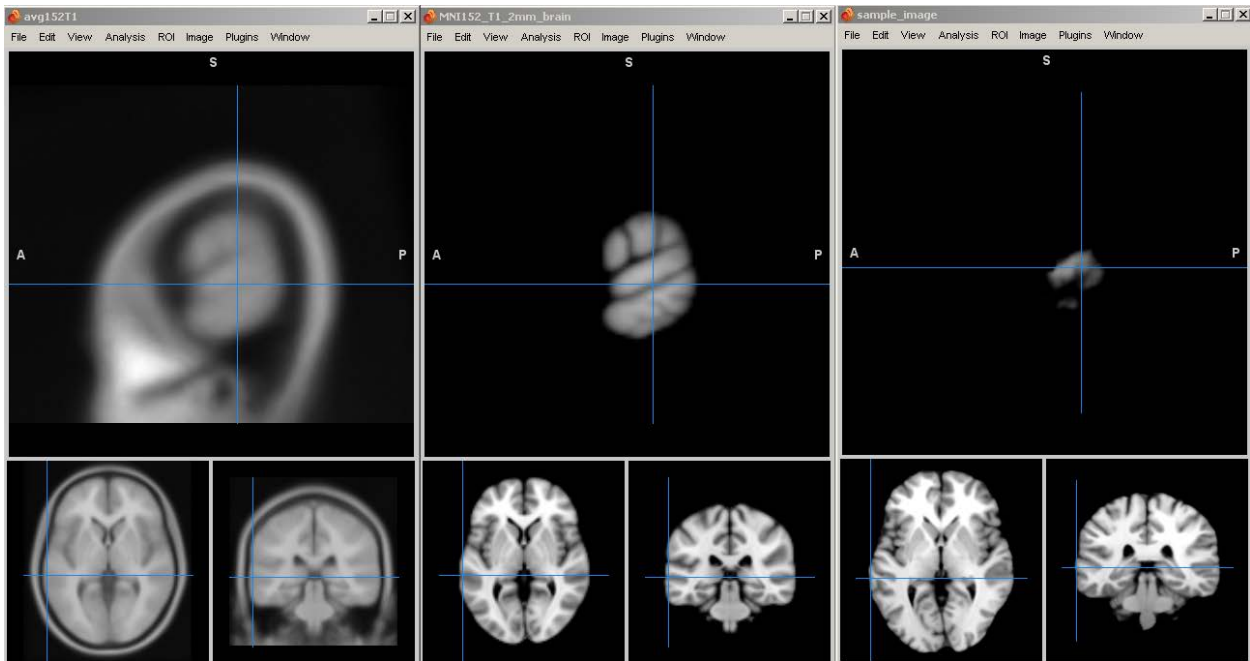
Comparisons of MNI standard images

Tool	File location	File name	Resolution
SPM	C:\Programs\spm12\canonical	Avg152T1.nii	2x2x2 mm
FSL	%FSLDIR/data/standard	MNI152_T1_2mm_brain.nii.gz	2x2x2 mm
Mango	C:\Users\jusername\MangoTempData	Sample_image.nii.gz	1x1x1 mm

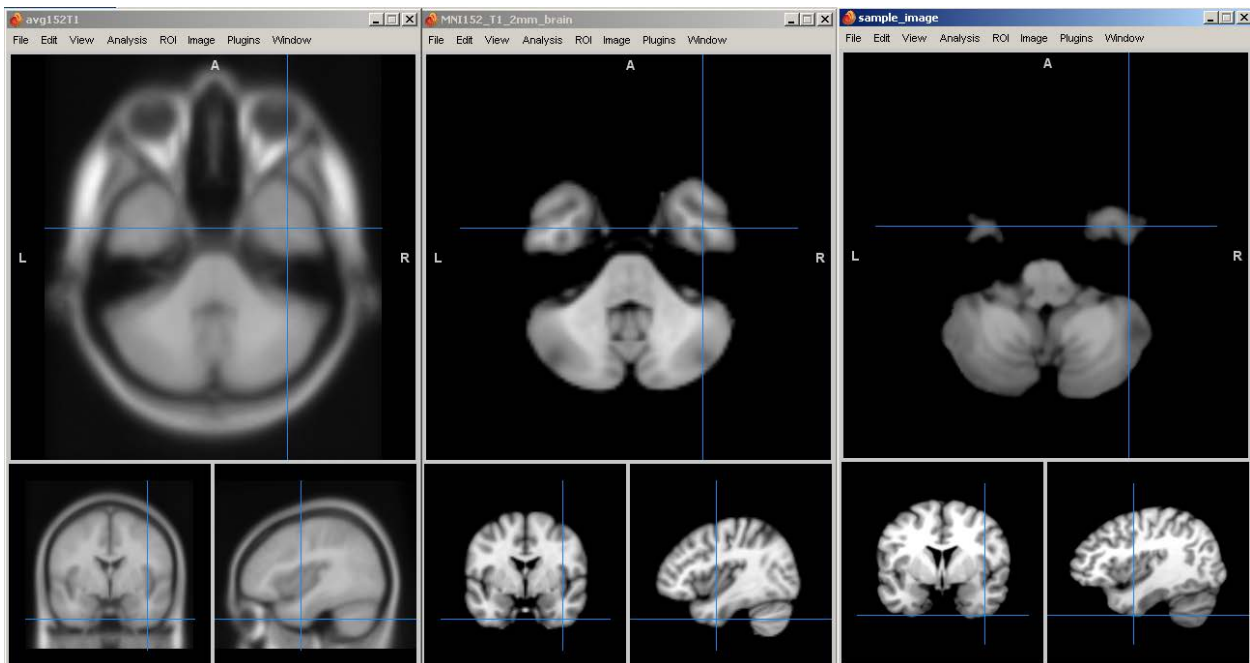
- The standard image in Mango is smaller than others. Therefore, the fMRI z-stat map overlaid on the Mango' example image can be placed outside the brain.
- SPM uses the head rather than the brain.
- Boundary comparisons (SPM, FSL, Mango): Superior



- Boundary comparisons (SPM, FSL, Mango): Left



- Boundary comparisons (SPM, FSL, Mango): Inferior temporal



Suggestions

- Use the image viewer of the same tool as your analysis
- Copy the images of the fMRI analysis to the viewer's standard image folder.