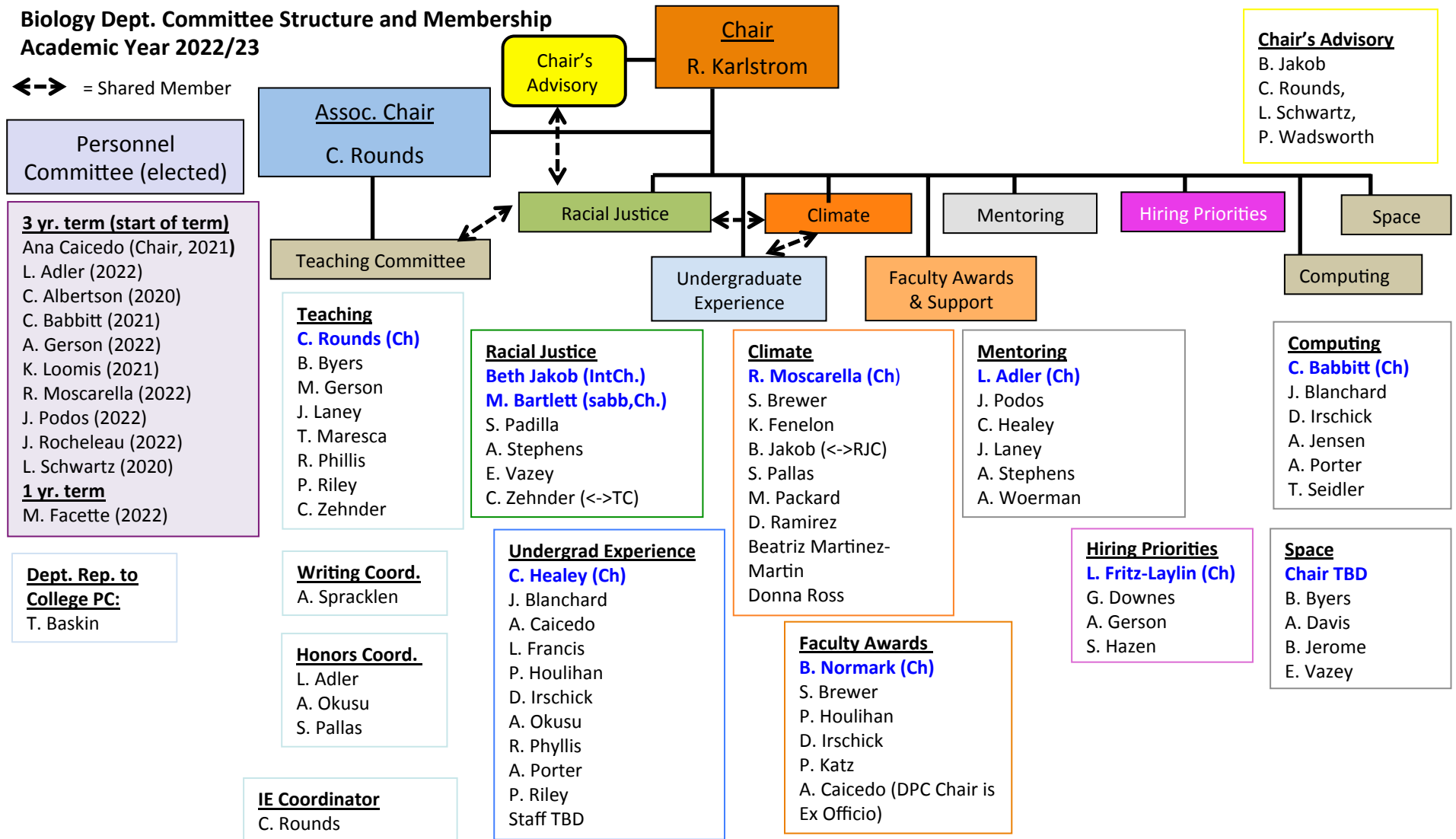


**Biology Dept. Committee Structure and Membership  
Academic Year 2022/23**

←→ = Shared Member



Fac. Searches, Task Forces, Seminars, etc.

**Workload Equity Task Force**  
**Peg Riley (Ch)**, Paul Katz, Elena Vazey, Jeff Laney, Kari Loomis

**2022-2023: Genetics/Genomics TT Search:**  
**G. Downes (Ch)**, C. Babbitt, M. Facette, L. Fritz-Laylin, J. Rocheleau, Jesse Mager (VetAnSci)

**Kauleneaus Lecture:**  
Amanda Woerman

**AQAD Task Force 2023-2024**  
TBD