

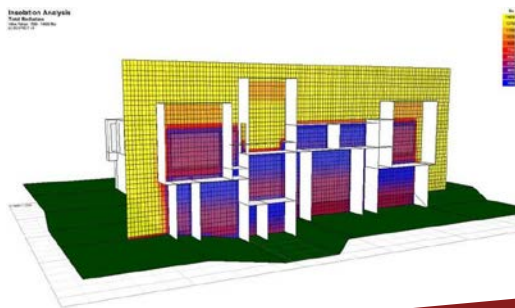
ENERGY ANALYSIS OF BUILDINGS FROM THE MODERNIST PERIOD

BCT RESEARCH SPOTLIGHT

About

The geometry of the United States' iconic modernist residences have been frequently examined and written about, but literature relating to the buildings' performance or response mechanisms to climate demands has focused more on generic discussion and overall suppositions.

This research program aims to shine a type of digital searchlight, back some seventy years, **to examine the environmental and energy performance of modernist icons through the use of state of the art techniques.**



Top image: **Sustaining Modernity: An Analysis of a Modern Masterpiece, the Gropius House**

Left image: **Climate Responsive Design and the Milam Residence**

Key Publications

FIOCCHI, C.; *Sustaining Modernity: An Analysis of The Gropius House*. Autodesk Sustainability Workshop (2013)

FIOCCHI, C.; HOQUE, S.; *Sustaining Modernity: An Analysis of a Modern Masterpiece -The Gropius House*. 13th Canadian Conference on Building Science and Technology (2011)

FIOCCHI, C.; HOQUE, S.; SHAHADAT, M.: *Climate Responsive Design and the Milam Residence*. Journal of Sustainability (2011) p. 2289 – 2306.

LEARN MORE: bct.eco.umass.edu/research