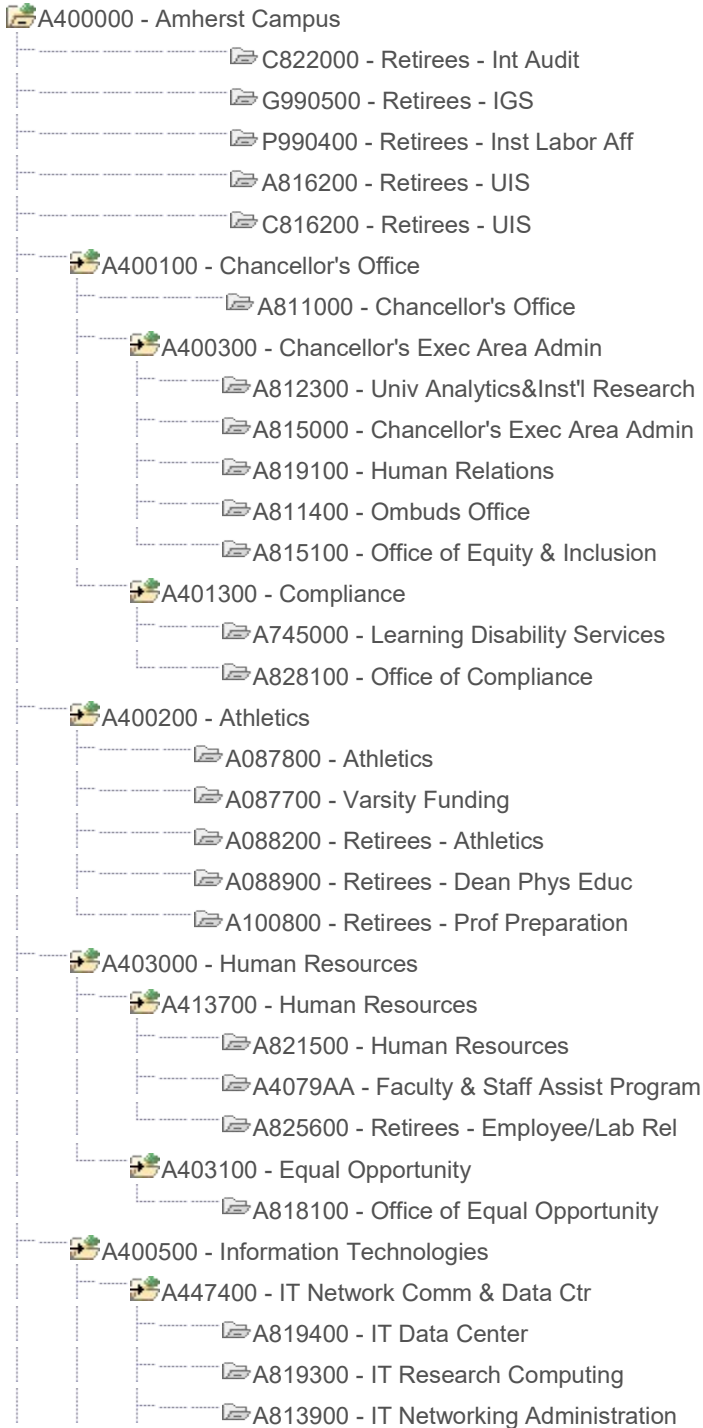
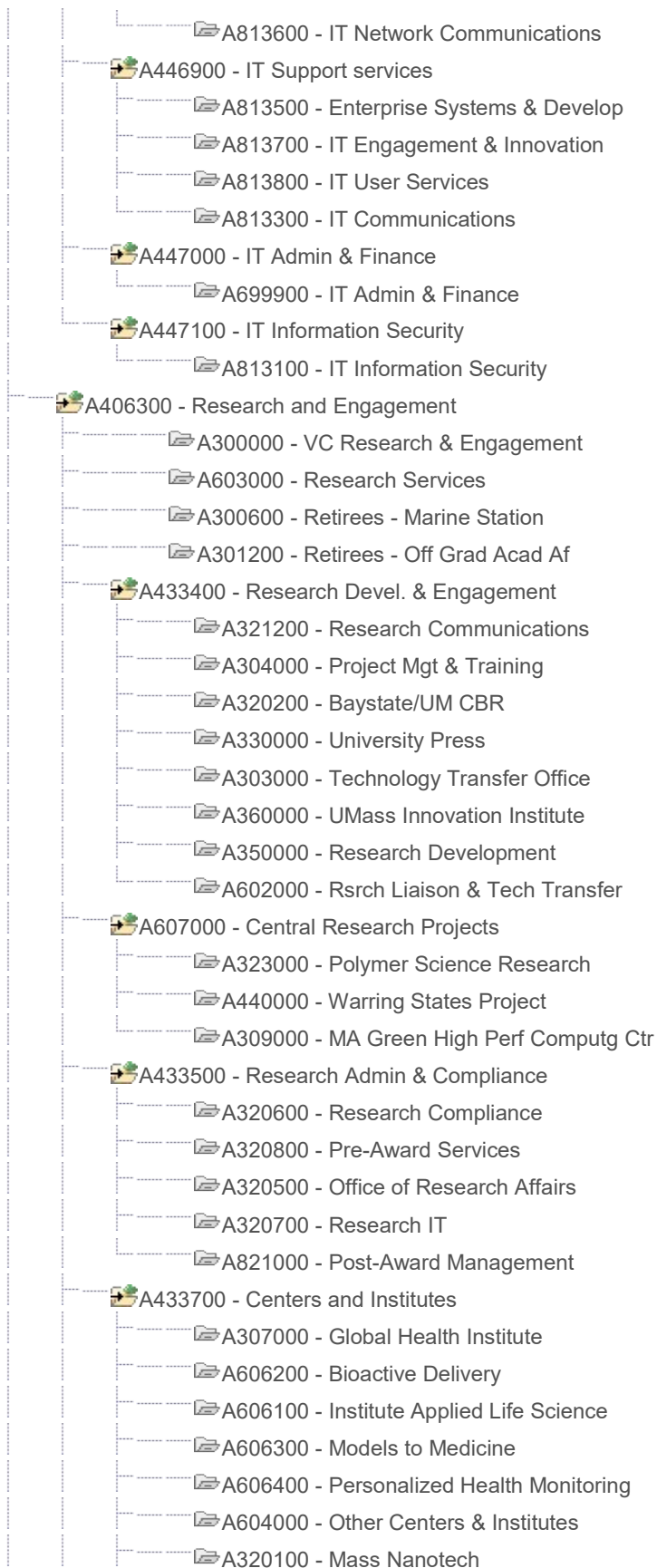
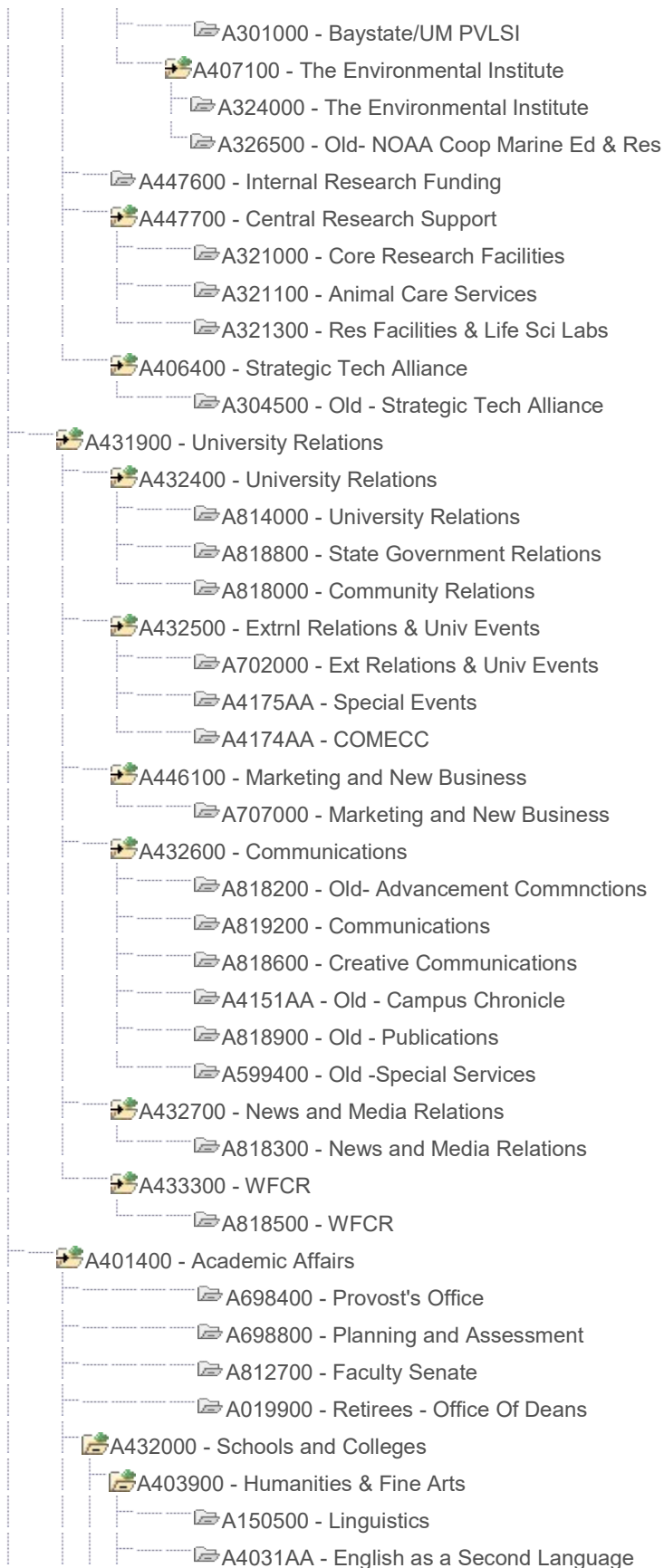


Set ID UMAMH
Effective Date 07/01/2019
Tree Name DEPT_SECURITY

Last Audit Valid Tree
Status Active
Amherst Security







- A221100 - Afro-American Studies
- A084700 - Arts Extension Service
- A084500 - OE: HFA
- A100200 - Art
- A103300 - Architecture
- A100400 - History of Art & Architecture
- A150400 - Classics
- A150100 - English
- A220500 - History
- A111800 - Foreign Language Resource Ctr
- A039900 - Judaic & Near Eastern Studies
- A100500 - Music & Dance
- A150900 - Philosophy
- A102000 - Programs and Centers
- A110600 - Slavic & East European Studies
- A100700 - Theater
- A499300 - Women, Gender, Sexuality Studies
- A150000 - Languages, Literat. & Cultures
 - A110500 - Spanish & Portuguese
 - A030100 - East Asian Languages & Culture
 - A150300 - Comparative Literature
 - A110200 - French & Italian Studies
 - A110300 - Germanic Languages/ Literature
- A101600 - Dean - Humanities & Fine Arts
- A150600 - Writing Program
- A101800 - Retirees - Int Film Stu Pro
- A100300 - Retirees - Art History
- A404100 - Social & Behavioral Sciences
 - A060200 - Journalism
 - A084200 - OE: SBS
 - A050500 - Resource Economics
 - A220200 - Anthropology
 - A326400 - Archeological Services
 - A011100 - Resources Economics
 - A431500 - CLACLS
 - A060100 - Communication
 - A220400 - Economics
 - A220900 - ISSR
 - A052300 - Labor Center
 - A020400 - Landscape Arch & Regional Plan
 - A149900 - Legal Studies
 - A221200 - PERI

- A220700 - Political Science
- A222400 - Public Policy & Administration
- A220800 - Sociology
- A221700 - STPEC
- A221600 - Dean - Social & Behavioral Sci
- A662000 - MA Inst For Social & Econ Res
- A200300 - Ctr for Research on Families
- A221800 - Advising Center
- A220300 - Law & Society Association
- 🌿 A432100 - College of Natural Sciences
 - A020700 - Vet Tech Program
 - A100000 - Grad - STEM K-12
 - A083100 - OE: CNS
 - A254000 - Dean - Natural Sciences
 - A328000 - NEAGAP - Northeast Alliance
 - A042800 - Hatch Nutrition
 - A200100 - Psychology and Brain Sci
 - 🌿 A044100 - Interdisciplinary Programs
 - A040500 - Plant Biology
 - A042900 - Organismic/Evolutionary Biolgy
 - A221000 - Neuroscience & Behavior
 - A041600 - Molecular & Cellular Biology
- 🌿 A404000 - Natural Sciences & Mathematics
 - A170700 - CNS Advising Center
 - A190100 - Astronomy
 - A191500 - Atlas Project
 - A041400 - Biochemistry/Molecular Biology
 - A040100 - Biology
 - A190500 - Chemistry
 - A191400 - Geosciences
 - A170100 - Mathematics & Statistics
 - A190200 - Physics
 - A090700 - Polymer Science & Engineering
 - A170300 - Scientific Reasoning Res Inst
 - A170500 - Dean - Natural Sciences & Math
 - A040200 - Retirees - Botany
 - A040700 - Retirees - Zoology
- 🌿 A404300 - Natural Resources & the Envrmt
 - 🌿 A012000 - Center for Agriculture
 - 🌿 A405700 - UMass Extension
 - A082300 - UMass Extension
 - A4059AA - Natural Res & Environ Conserv

- 📁 A4058AA - Agroecology
- 📁 A4060AA - 4-H Youth & Family Development
- 📁 A663200 - Retirees - Nutrit Food Extn
- 📁 A661900 - Retirees - 4-H - Extension
- 📁 A690000 - Retirees - UMass Extension
- 📁 A690200 - Retirees - Berkshre Cnty Ex
- 📁 A690300 - Retirees - Bristol Cnty Ext
- 📁 A690500 - Retirees - Essex Cnty Extns
- 📁 A690600 - Retirees - Frnkln Cnty Extn
- 📁 A690700 - Retirees - Hampdn Cnty Extn
- 📁 A690800 - Retirees - Hampshre Cnty Ex
- 📁 A691000 - Retirees - Norfolk Cnty Ext
- 📁 A691100 - Retirees - Plymth Cnty Extn
- 📁 A691200 - Retirees - Suffolk Cty Extn
- 📁 A691300 - Retirees - Worcstr Cty Extn
- 📁 A690400 - Retirees - Dukes County Ext
- 📁 A690900 - Retirees - Middlesex County Ex
- 📁 A325000 - Water Resources Research Ctr
- 📁 A010000 - Plant, Soil & Insect Sciences
- 📁 A130100 - Consumer Studies
- 📁 A042100 - Entomology
- 📁 A042000 - Environmental Sciences
- 📁 A011300 - Food Sciences
- 📁 A041100 - Microbiology
- 📁 A011400 - Environmental Conservation
- 📁 A040000 - Organismic & Evolutionary Biol
- 📁 A010300 - Plant and Soil Science
- 📁 A691400 - Stockbridge Sch of Agriculture
- 📁 A010400 - Veterinary & Animal Sciences
- 📁 A011800 - Dean - Natural Res & Environ
- 📁 A327000 - Marine Station
- 📁 A663500 - Agri Exp Sta
- 📁 A661400 - Cranbry Stat Ext
- 📁 A663400 - Retirees - Subr Expr Stat
- 📁 A012200 - Retirees - Seed Lab Ctl
- 📁 A040400 - Retirees - Plant Pathology
- 📁 A090300 - Retirees - Food Engr
- 📁 A404200 - College of Nursing
 - 📁 A120300 - Dean - College of Nursing
 - 📁 A083200 - OE: Nursing
- 📁 A404400 - Public Health/ Health Sciences
 - 📁 A041900 - Biostatistics & Epidemiology

- A083400 - OE: SPHHS
- A122000 - Communication Disorders
- A112000 - Health Promotion & Policy
- A122700 - Dean - Pub Health & Health Sci
- A121400 - Environmental Health Sciences
- A089800 - Kinesiology
- A042400 - Nutrition
- A043000 - Nutrition Ed - Old
- A113000 - Public Health

 A404500 - College of Education

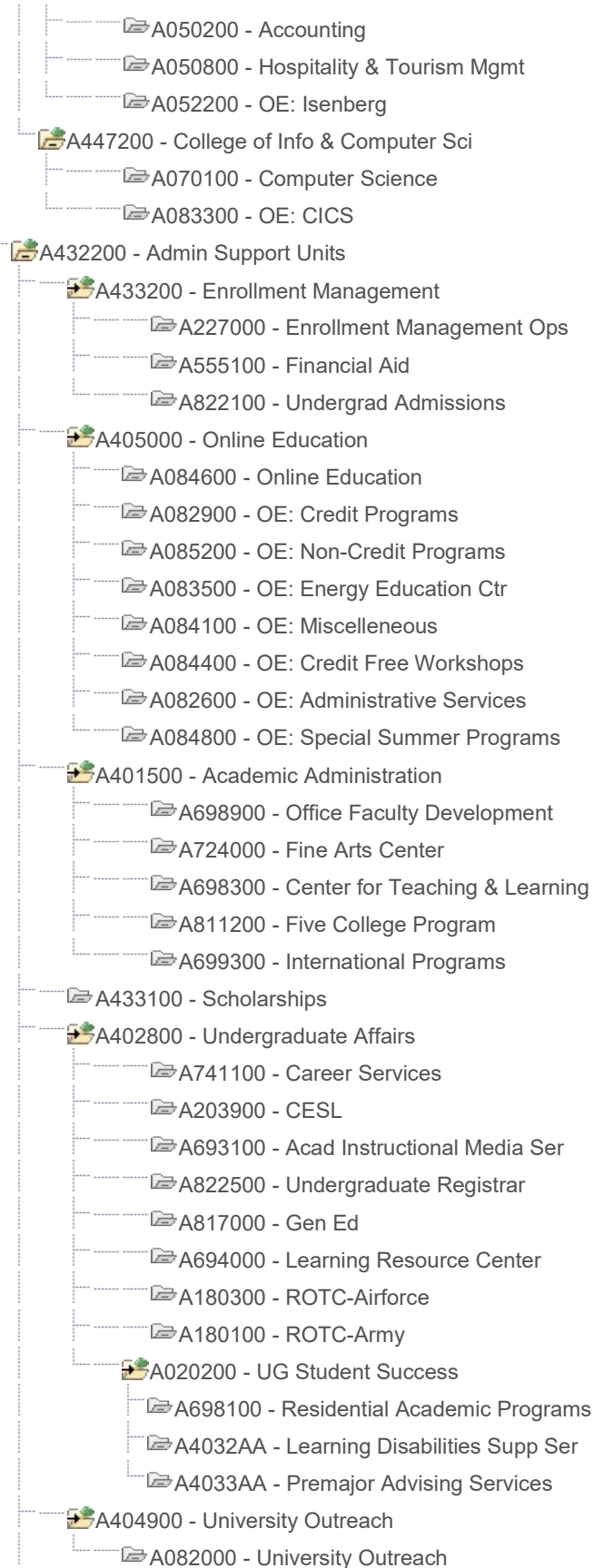
- A080000 - Dean - College of Education
- A084000 - OE: Education
- A086000 - Educ Policy, Research & Admin
- A081000 - Student Development
- A4046AA - K-12 Outreach
- A083000 - Teacher Ed/Curriculum Studies
- A080100 - Retirees - Acad Support Edu
- A080200 - Retirees - Off Of Res & Dev
- A499100 - Retirees - Sw Res Col
- A085000 - Retirees - Division I-Educ

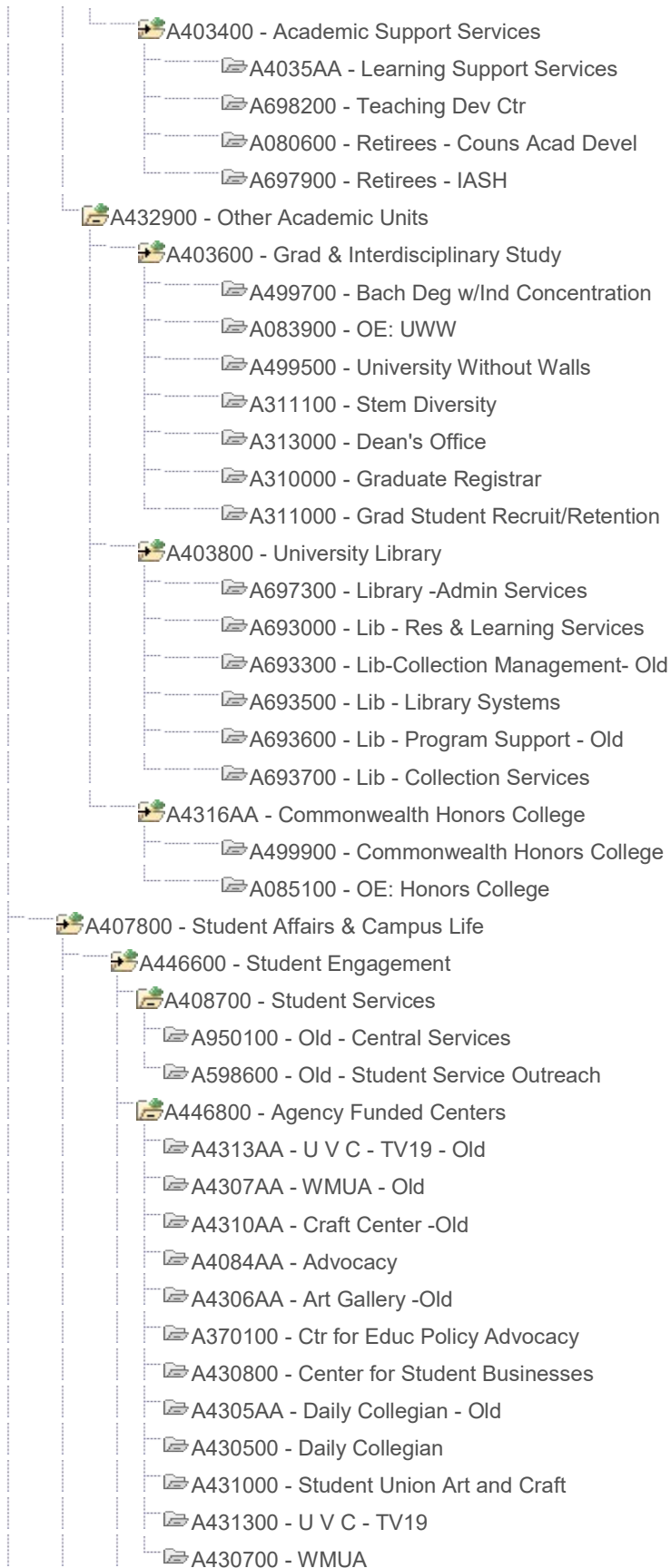
 A404700 - Engineering

- A090600 - Chemical Engineering
- A090800 - Civil & Environ Engineering
- A090900 - Elect & Computer Engineering
- A091000 - Mech & Industrial Engineering
- A093000 - Engineering Minority Program
- A092700 - Acad Support Eng
- A091100 - UMass Trans Ctr
- A092600 - Dean - Engineering
- A091300 - Retirees - Ind Engin Op Res
- A431700 - Engineering Research Center
- A091200 - Biomedical Engineering
- A084300 - OE: Engineering

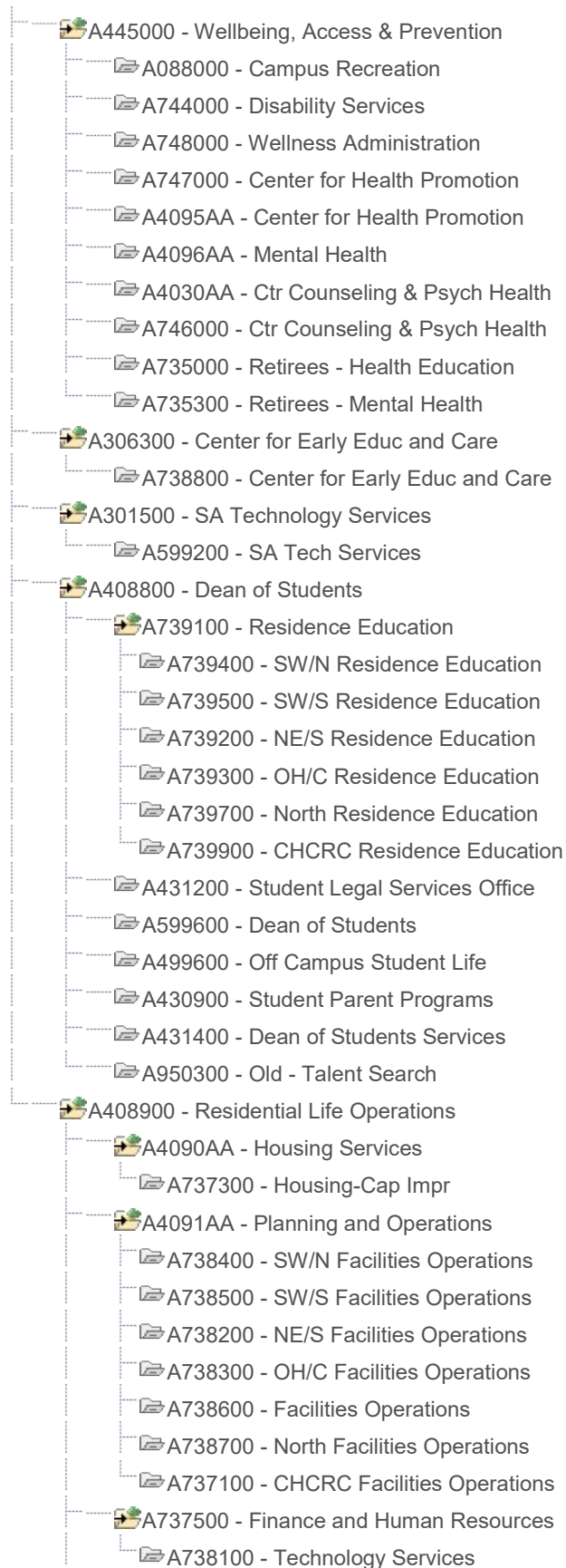
 A404800 - Management

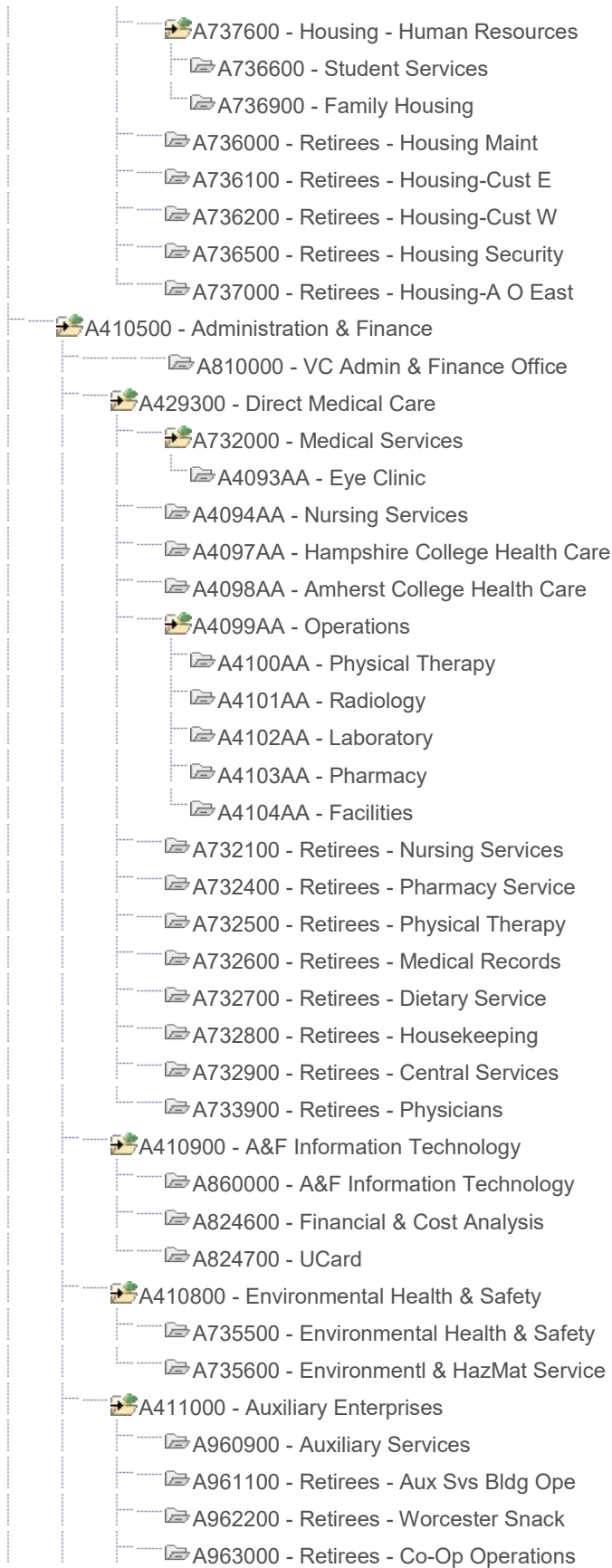
- A050700 - Sport Management
- A050400 - Operations Managemnt
- A050300 - Finance
- A050600 - Management
- A050900 - Marketing
- A051100 - MA Small Business Dev Ctr
- A089900 - Sports Studies
- A052100 - Dean - Isenberg School



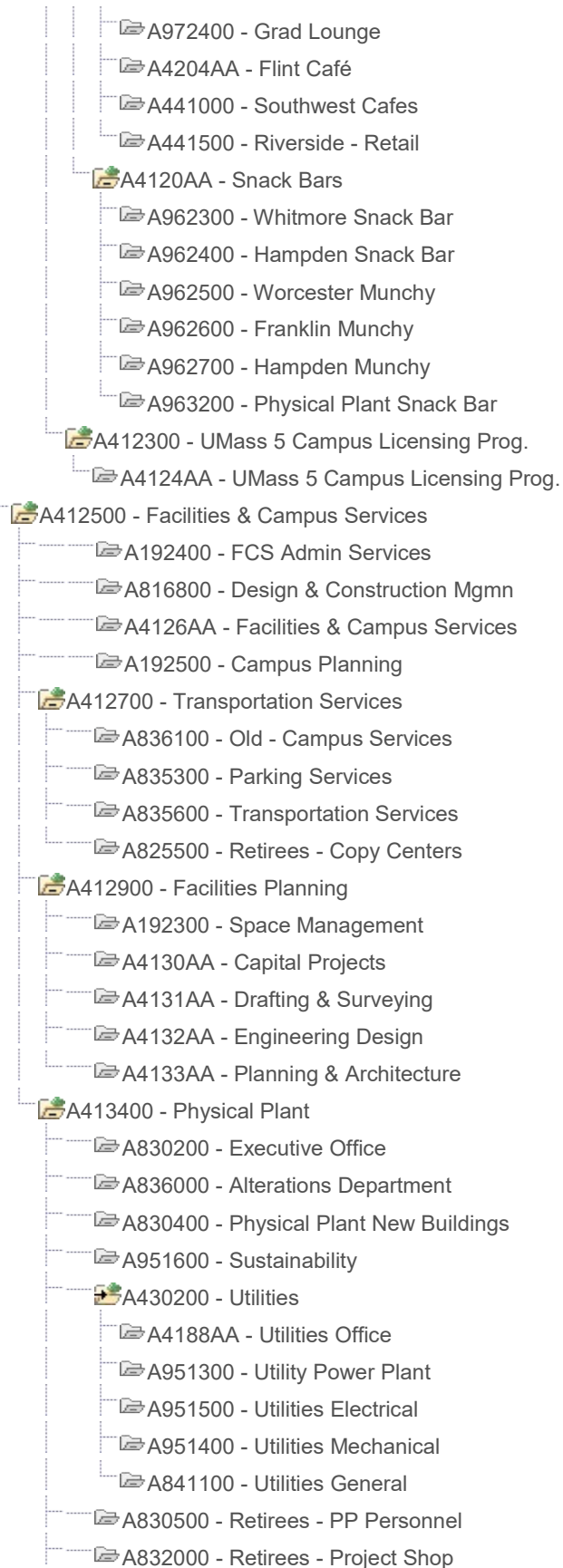


- 📁 A446700 - Student Governance
 - 📁 A312000 - Grad Student Senate
 - 📁 A420100 - Student Government Assoc
 - 📁 A431100 - Office of ALANA Affairs
 - 📁 A4086AA - Student Engagement AA
 - 📁 A4308AA - Center for Student Busin - Old
 - 📁 A4085AA - Student Engagement Coaches
 - 📁 A4311AA - Office of ALANA Affairs - Old
 - 📁 A598800 - Fraternities & Sororities- Old
 - 📁 A4309AA - Commuter Serv/Housing Re - Old
 - 📁 A4312AA - Student Legal Services O - Old
 - 📁 A902500 - UALRC
 - 📁 A813200 - BCP
 - 📁 A697500 - CCEBMS
 - 📁 A713200 - Student Activities & Involmnt
 - 📁 A430600 - Emergency Medical Services
 - 📁 A713100 - Student Engagement Admin
 - 📁 A713300 - Registered Stdnt Org Councils
- 📁 A429500 - Student Affairs Administration
 - 📁 A741200 - Assessment
 - 📁 A599100 - SACL Shared Services
 - 📁 A599900 - SA Administrative Operations
 - 📁 A599700 - Retirees - Division of Stu Aff
- 📁 A306100 - Assoc. Vice Chancellor, SACL
 - 📁 A306200 - Assoc. Vice Chancellor, SACL
- 📁 A408000 - University Police Department
 - 📁 A817100 - University Police Department
 - 📁 A4081AA - Police Operations
 - 📁 A4082AA - Security Operations
- 📁 A447500 - Assessment/Student Transitions
 - 📁 A950200 - New Students Orientation
- 📁 A446400 - Advocacy, Inclusion & Sup Prog
 - 📁 A699500 - Cultural and Diversity Educ
 - 📁 A305000 - AISP Administration
 - 📁 A699800 - Int'l Student/Scholars Support
 - 📁 A601000 - CMASS - Ctr Multicul Advancmnt
 - 📁 A699700 - Men and Masculinity Programs
 - 📁 A699600 - Center for Women and Community
 - 📁 A741000 - Veterans Services
 - 📁 A431600 - Student Bridges
 - 📁 A599000 - Stonewall Center
 - 📁 A600000 - Religious & Spiritual Life

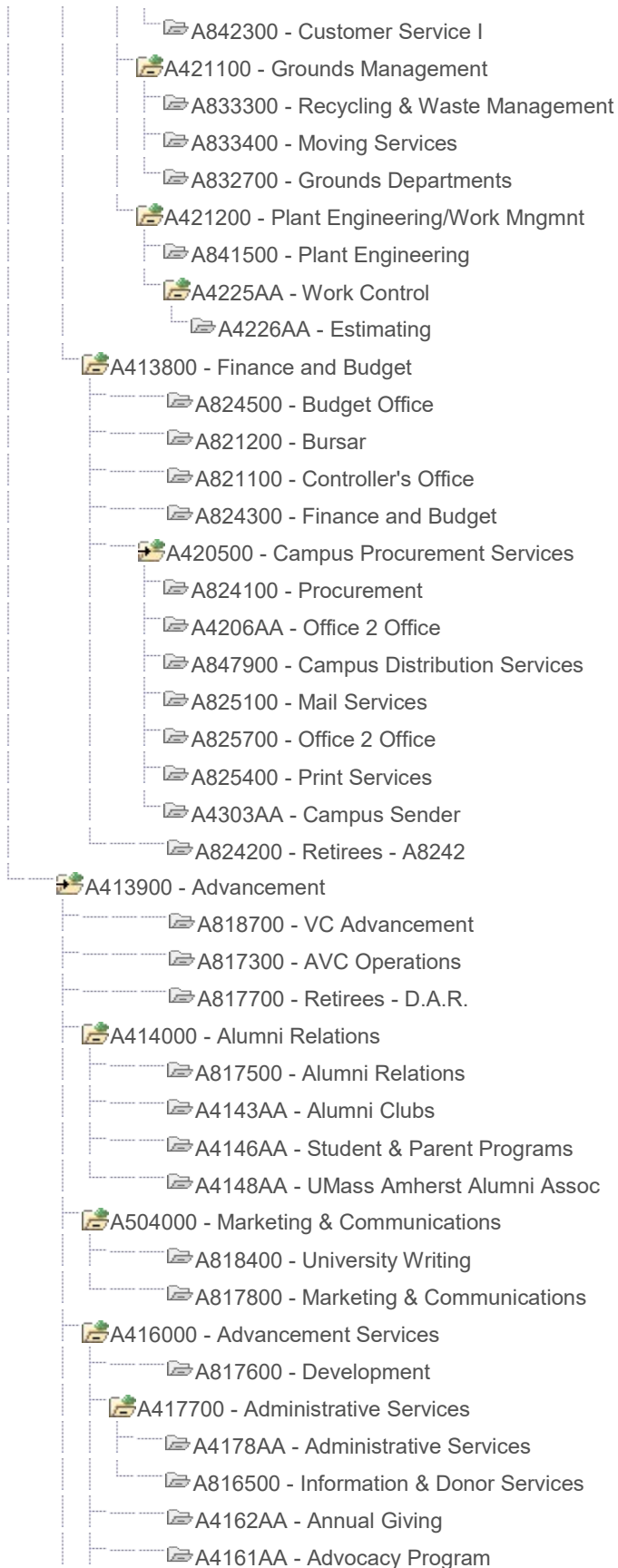




- [-] A973100 - Retirees - Textbook
- [-] A973200 - Retirees - Tradebook
- [-] A974100 - Retirees - Supply Dept Admin
- [-] A961300 - Retirees - Purchase & Warehouse
- [-] A961400 - Retirees - Bake Shop
- [-] A971000 - Retirees - Phys Plant Ops
- [-] A972600 - Retirees - Cafe
- [+] A411100 - Campus Center/Student Union
 - [-] A4112AA - Campus Center/Student Union
 - [-] A870900 - University Store
 - [-] A972800 - Book Store/ Textbook Annex
 - [-] A974500 - Conference Services
 - [-] A4113AA - Facilities Services
 - [+] A4114AA - Hotel
 - [-] A974200 - Accommodations
 - [-] A974300 - Accommodations Laundry
 - [+] A4115AA - Retail Services
 - [-] A970100 - Retail Services
 - [-] A970500 - Post Office
 - [-] A970600 - Print Shop
 - [-] A970900 - Ticket Office
 - [-] A970800 - Vending & Amusement Dept.
- [+] A411600 - Dining Services
 - [+] A4119AA - Dining Halls
 - [-] A441100 - Riverside - Board
 - [-] A961000 - Meal Plan Office
 - [-] A961600 - Worcester Dining Commons
 - [-] A962000 - Mt Ida Dining
 - [-] A961700 - Franklin Dining Commons
 - [-] A961800 - Hampshire Dining Commons
 - [-] A961900 - Berkshire Dining Commons
 - [-] A441200 - Central Bakery
 - [-] A441300 - DS Maintenance
 - [-] A441400 - Warehouse
 - [+] A420200 - Retail Food
 - [-] A4122AA - University Club
 - [-] A4118AA - Concessions, Commissary, Trucks
 - [-] A4213AA - Northeast Cafes
 - [-] A962100 - Food Service Retail Admin
 - [-] A971800 - Blue Wall Cafe
 - [-] A972200 - Hatch Cafe
 - [-] A972300 - Catering Food



- A832300 - Retirees - Masonry Shop
- A832400 - Retirees - Painting Shop
- A834400 - Retirees - HVAC
- A835400 - Retirees - Cmps Parking Garage
- A835500 - Retirees - Parking Security
- A836600 - Retirees - Metal Working
- A836700 - Retirees - Radio/TV Comm
- A836800 - Retirees - Refrigeration
- A837000 - Retirees - Machine Shop
- A844100 - Retirees - Elevator Shop
- A844300 - Retirees - Fire & Sec Syst
- A844600 - Retirees - Watch Tour
- A848100 - Retirees - Garage Motor Pool
- A848200 - Retirees - Power Plant
- A833000 - Retirees - Support Shop
- A835800 - Retirees - Zone 1
- A835900 - Retirees - Zone 2
- A834100 - Retirees - Zone 3
- A835700 - Retirees - Zone 4
- A834000 - Retirees - Zone 5
- A836400 - Retirees - Asbestos Shop
- A837400 - Retirees - Utilities Electric
- A420700 - Building Maintenance/Utilities
 - A838000 - Building Maintenance
 - A835100 - Zone Shops
 - A4182AA - Zone 6
 - A430100 - Central Shop
 - A833900 - Central Shop
 - A832200 - Building Maintenance
 - A832100 - Mechanical Maintenance
 - A4187AA - Tech. Services Group
 - A832500 - Electrical Maintenance
 - A4304AA - Support Trades
 - A834300 - Control System
- A420800 - Business Management
 - A830300 - Business Management
 - A848000 - Purchasing & Warehouse
 - A4192AA - HR Section
- A420900 - Custodial Services
 - A834500 - Custodial Services
- A421000 - Customer Services
 - A834900 - Customer Serv & Work Managemnt



- 📁 A4164AA - Gifts & Estate Planning
- 📁 A4168AA - Stewardship
- 📁 A4170AA - School & Col Develop Offices
- 🏡 A416500 - Development
- 📁 A817400 - Asst VC for Development

