

LONG TERM SITE WIND DATA QUARTERLY REPORT

Bishop and Clerks

April 1, 2011 – June 30, 2011

Prepared for

Massachusetts Clean Energy Center
55 Summer Street, 9th Floor
Boston, MA 02110

by

Frederick Letson
James F. Manwell
Anthony F. Ellis

August 29, 2011

Report template version 1.0

Renewable Energy Research Laboratory
University of Massachusetts, Amherst
160 Governors Drive, Amherst, MA 01003
www.ceere.org/rerl • (413) 545-4359 • rerl@ecs.umass.edu



NOTICE AND ACKNOWLEDGEMENTS

This report was prepared by the Wind Energy Center (WEC) at the University of Massachusetts, Amherst in the course of performing work sponsored by the Renewable Energy Trust (RET), as administered by the Massachusetts Clean Energy Center (MassCEC). The opinions expressed in this report do not necessarily reflect those of MTC or the Commonwealth of Massachusetts, and reference to any specific product, service, process, or method does not constitute an implied or expressed recommendation or endorsement of it.

Further, MassCEC, the Commonwealth of Massachusetts, and the Wind Energy Center make no warranties or representations, expressed or implied, as to the fitness for particular purpose or merchantability of any product, apparatus, or service, or the usefulness, completeness, or accuracy of any processes, methods or other information contained, described, disclosed, or referred to in this report. MassCEC, the Commonwealth of Massachusetts, and the Wind Energy Center make no representation that the use of any product, apparatus, process, method, or other information will not infringe privately owned rights and will assume no liability for any loss, injury, or damage directly or indirectly resulting from, or occurring in connection with, the use of information contained, described, disclosed, or referred to in this report.

TABLE OF CONTENTS

Notice and Acknowledgements	1
Table of Contents	2
Table of Figures	3
Executive Summary	4
SECTION 1 - Station Location	5
SECTION 2 - Instrumentation and Equipment	5
SECTION 3 - Data Summary	7
SECTION 4 - Graphs	9
Wind Speed Time Series	9
Wind Speed Distributions	10
Monthly Average Wind Speeds	10
Diurnal Average Wind Speeds	11
Turbulence Intensities	11
Wind Roses	12
SECTION 5 - Significant Meteorological Events	12
SECTION 6 - Data Collection and Maintenance	13
SECTION 7 - Data Recovery and Validation	13
Test Definitions	13
Sensor Statistics	15
APPENDIX A - Sensor Performance Report	16
Test Definitions	16
Sensor Statistics	16
APPENDIX B - Plot Data	17
Wind Speed Distribution Data	17
Monthly Average Wind Speed Data	17
Diurnal Average Wind Speed Data	18
Wind Rose Data	19

TABLE OF FIGURES

Figure 1 - Site location at Bishop & Clerks light.....	5
Figure 2 - Anemometry mast and data collection equipment at Bishop & Clerks	6
Figure 3 - Railing stiffener connecting PV bracket to rail.....	7
Figure 4 – Wind Speed Time Series	9
Figure 5 – Wind Speed Distribution	10
Figure 6 – Monthly Average Wind Speed	10
Figure 7 – Diurnal Average Wind Speeds	11
Figure 8 – Turbulence Intensity	11
Figure 9 – Wind Rose	12

EXECUTIVE SUMMARY

All the work presented in this Wind Data Report including installation and decommissioning of the meteorological tower and instrumentation, and the data analysis and reporting was performed by the Wind Energy Center (WEC) at the University of Massachusetts, Amherst.

This wind measurement station is installed on the Bishop & Clerks US Coast Guard (USCG) automated lighthouse, almost 3 miles south-southeast of Pt. Gammon on Cape Cod, MA. Installed in November of 2000, the wind monitoring station has been in continuous operation to this day. The two anemometers and wind vanes are mounted 15 m (49 ft) above the Mean Low Water Level.

This quarterly report covers the period April 1, 2011 – June 30, 2010. During this period, the mean recorded wind speed at 15 m was 7.2 m/s (16.2 mph) and the prevailing wind direction was from the northwest. The average turbulence intensity at 15 m was 0.074. The gross data recovery percentage (the actual percentage of expected data received) was 97.2% and the net data recovery percentage (the percentage of expected data which passed all of the quality assurance tests) was 53.2%. This low recovery percentage is due the failure of several sensors. Due to multiple sensor redundancies, statistics presented in this report are based on data covering 95% or more of each reporting period.

Additional information about interpreting the data presented in this report can be found in the Fact Sheet, “Interpreting Your Wind Resource Data,” produced by the Renewable Energy Research Lab (RERL) and the Massachusetts Technology Collaborative (MTC). This document is found through the RERL website:

http://www.ceere.org/rerl/about_wind/RERL_Fact_Sheet_6_Wind_resource_interpretation.pdf

* 1 m/s = 2.237 mph.

SECTION 1 - Station Location

Bishop & Clerks was originally a small island south of Hyannis in the 1800's. Over time, it has eroded down to a few exposed rocks. The concrete and stone base of the lighthouse is currently the largest remaining piece above water. The lighthouse is located within the three-mile state limit of Massachusetts' waters, at $41^{\circ}34'27.6''$ North, $070^{\circ}14'59.5''$ West (Figure 1). The wind monitoring station at Bishop and Clerks is located on the top of the USCG lighthouse facility. Relative to the Mean Low Water Level, the anemometry is mounted at a height of 15 m (49 ft).

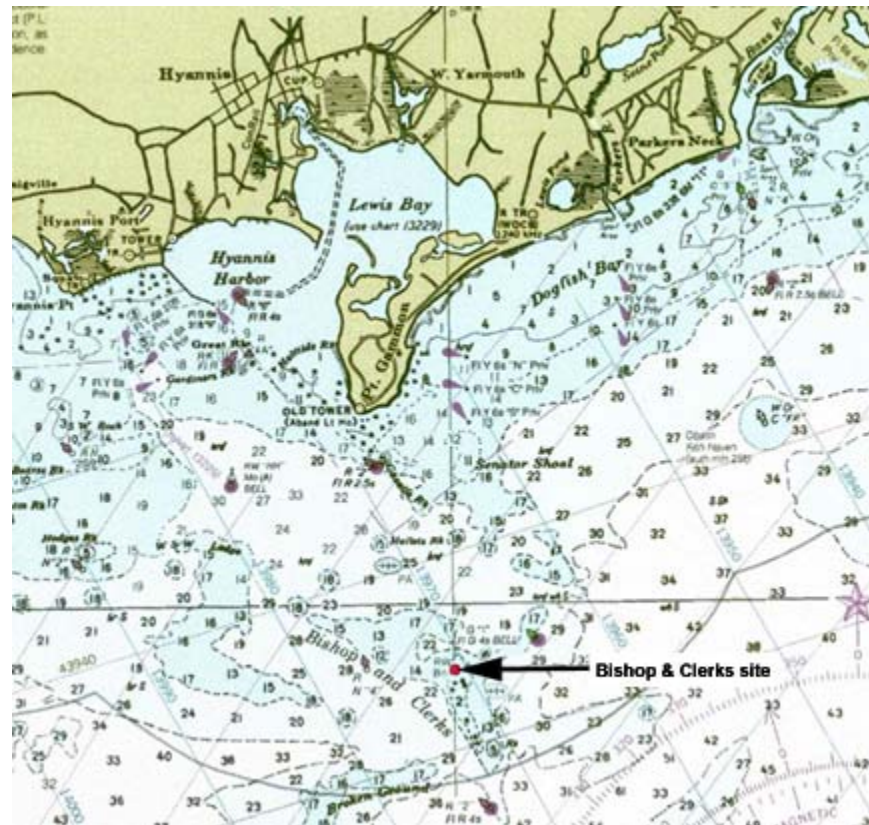


Figure 1 - Site location at Bishop & Clerks light

SECTION 2- Instrumentation and Equipment

The wind monitoring equipment is mounted on a 12 ft long, 3" diameter, aluminum mast that is secured to the deck railing at the top of the lighthouse (Figure 2). All the remaining monitoring equipment comes from NRG Systems, and consists of the following items:

- Symphonie ® Data Logger with iPack Modem

- Electrical enclosure box with 5 watt PV panel
- 2 – #40 Anemometers, standard calibration (Slope - 0.765 m/s, Offset – 0.350 m/s)
- 2 – 2 RM Young anemometer/ wind vanes
- 4 – Sensor booms, 43” length
- Lightning rod and grounding cable
- Shielded sensor wire

Note: The sensor load-out of this site was changed on June 22, 2011. The new sensors will be reflected in the next quarterly report.



Figure 2 - Anemometry mast and data collection equipment at Bishop & Clerks

Limitations of this setup are that the mast height is low relative to the diameter of the lighthouse and the fact that the warning light and a PV panel mounted on top of the tower can interfere with the free flow of air. The mast height is limited by the stiffness of the railing. In fact, it was necessary to reinforce the free end of the railing to the USCG lighthouse PV panel brackets in order to use even the 12 ft mast (Figure 3) which otherwise shook severely in high winds.

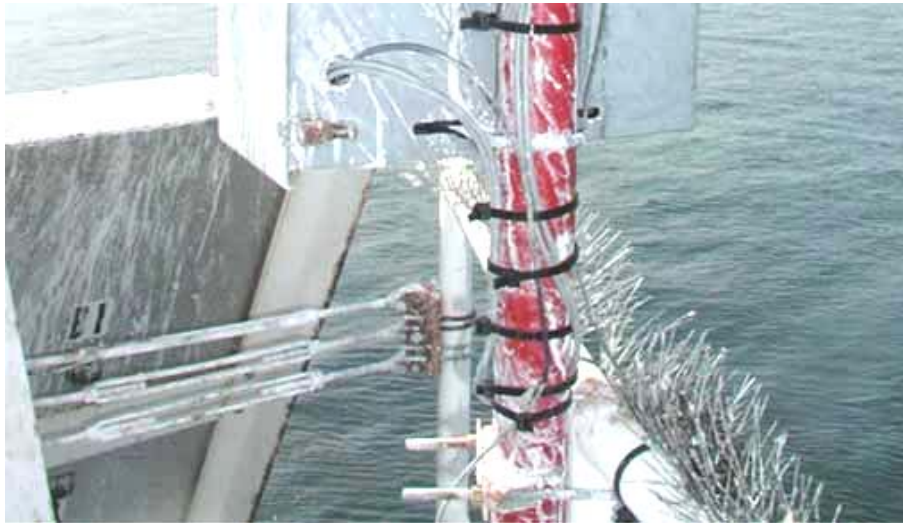


Figure 3 - Railing stiffener connecting PV bracket to rail

The Symphonie® logger is equipped with a built-in cell phone so that the data can be transmitted to a PC, located at the University of Massachusetts, Amherst. The logger samples wind speed and direction once every two seconds. These are then combined into 10-minute averages, and along with the standard deviation for those 10-minute periods, are put into a binary file. These binary files are converted to ASCII text files. These text files are then imported into a database software program where they are subjected to quality assurance (QA) tests prior to using the data.

SECTION 3- Data Summary

A summary of the wind speeds and wind directions measured during the reporting period is included in Table 1. Table 1 includes the mean wind speeds, the maximum instantaneous wind speed and the prevailing wind direction. These values are provided for each month of the reporting period and for the whole reporting period.

Table 1. Wind Speed and Direction Data Summary

Month	Mean Wind Speed [m/s]	NDR [%]	Max Wind Speed [m/s]	NDR [%]	Prevailing Direction [deg]	NDR [%]	TI at 10 m/s [-]	NDR [%]
Apr-11	8.225	99.88	20.91	99.88	SW	99.86	0.07418	99.88
May-11	7.062	99.8	18.6	99.8	NNE	99.98	0.07083	99.8
Jun-11	6.454	99.44	15.8	99.44	W	98.94	0.07592	99.44
Quarter	7.246	99.71	20.91	99.71	SW	99.6	0.07362	99.71

A summary of the turbulence intensity during the reporting period is also included in Table 1. These values are provided for each month of the reporting period and for the whole reporting period. Turbulence Intensity is calculated by dividing the standard deviation of the wind speed by the mean wind speed and is a measure of the gustiness of a wind resource. Lower turbulence results in lower mechanical loads on a wind turbine. Turbulence intensity varies with wind speed. The average turbulence intensity presented in Table 1 is the mean turbulence intensity when the wind speed at each measurement height is between 10 and 11 m/s.

Wind data statistics in the table are reported when more than 90% of the data during the reporting period are valid. In cases when a larger amount of data is missing, the percent of the available data that are used to determine the data statistics is noted. No measurement of wind speed or direction can be perfectly accurate. Wind speed measurement errors occur due to anemometer manufacturing variability, anemometer calibration errors, the response of anemometers to turbulence and vertical air flow and due to air flows caused by the anemometer mounting system. Every effort is made to reduce the sources of these errors. Nevertheless, the values reported in this report have an expected uncertainty of about $\pm 2\%$ or ± 0.2 m/s, whichever is greater. Wind direction measurement errors occur due to sensor measurement uncertainty, tower effects, boom alignment measurement errors and twisting of the sensor mast and booms. Efforts are also made to reduce these errors, but the reported wind directions are estimated to have an uncertainty of ± 5 degrees.

SECTION 4 - Graphs

This report contains several types of wind data graphs. Unless otherwise noted, each graph represents data from 1 quarter (3 months). The following graphs are included:

- Time Series – 10-minute average wind speeds are plotted against time.
- Wind Speed Distribution – A histogram plot giving the percentage of time that the wind is at a given wind speed.
- Monthly Average – A plot of the monthly average wind speed over a 12-month period. This graph shows the trends in the wind speed over the year.
- Diurnal – A plot of the average wind speed for each hour of the day.
- Turbulence Intensity – A plot of turbulence intensity as a function of wind speed. Turbulence Intensity is calculated as the standard deviation of the wind speed divided by the wind speed and is a measure of the gustiness of a wind resource. Lower turbulence results in lower mechanical loads on a wind turbine.
- Wind Rose – A plot, by compass direction showing the percentage of time that the wind comes from a given direction and the average wind speed in that direction.

Data for the wind speed histograms, monthly and diurnal average plots, and wind roses are included in APPENDIX B.

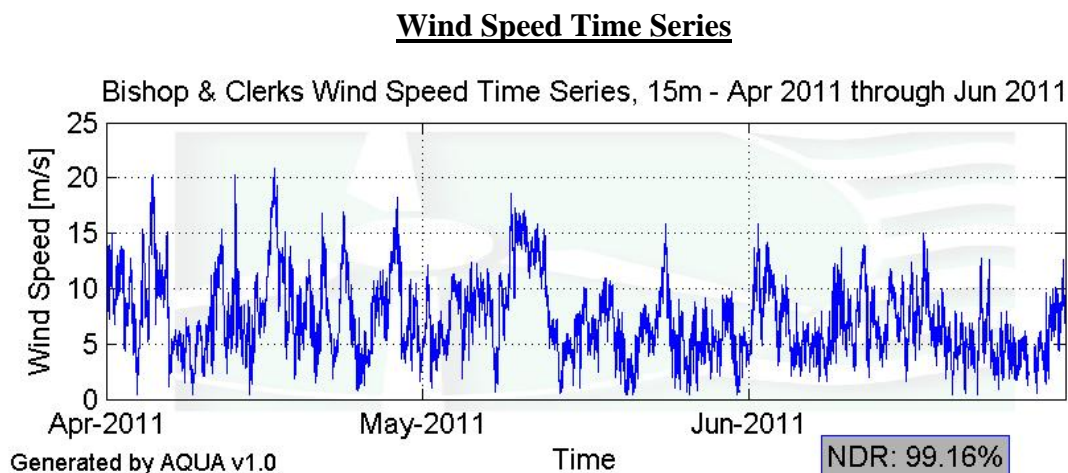


Figure 4 – Wind Speed Time Series

Wind Speed Distributions

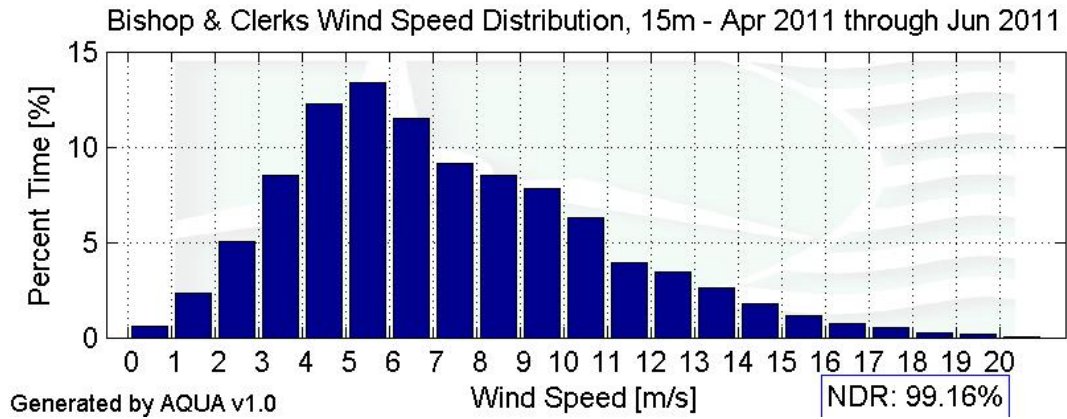


Figure 5 – Wind Speed Distribution

Monthly Average Wind Speeds

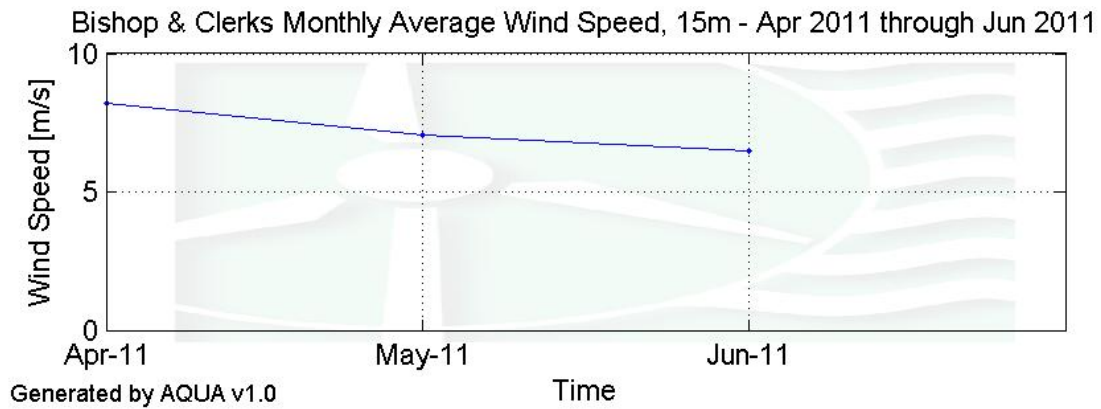


Figure 6 – Monthly Average Wind Speed

Diurnal Average Wind Speeds

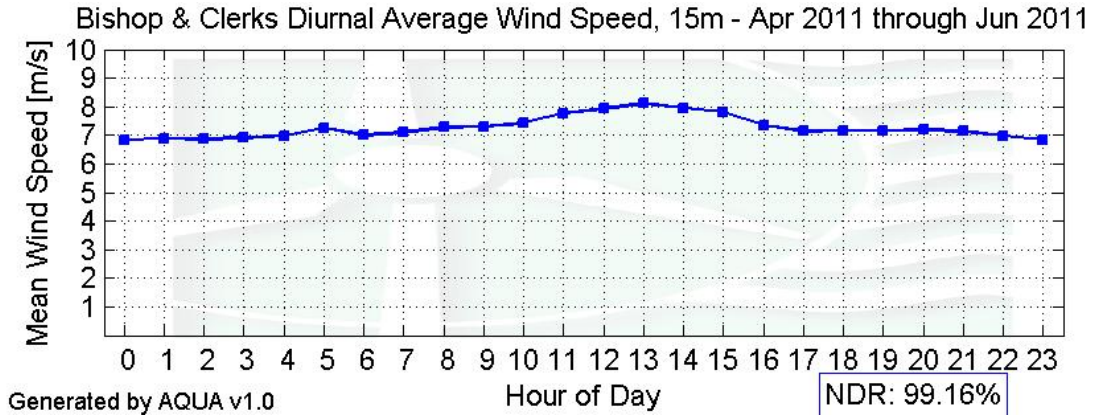


Figure 7 – Diurnal Average Wind Speeds

Turbulence Intensities

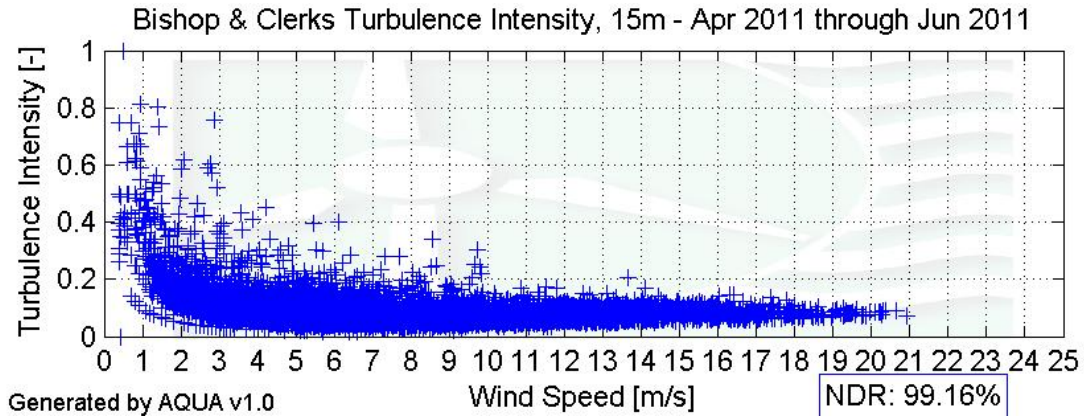


Figure 8 – Turbulence Intensity

Wind Roses

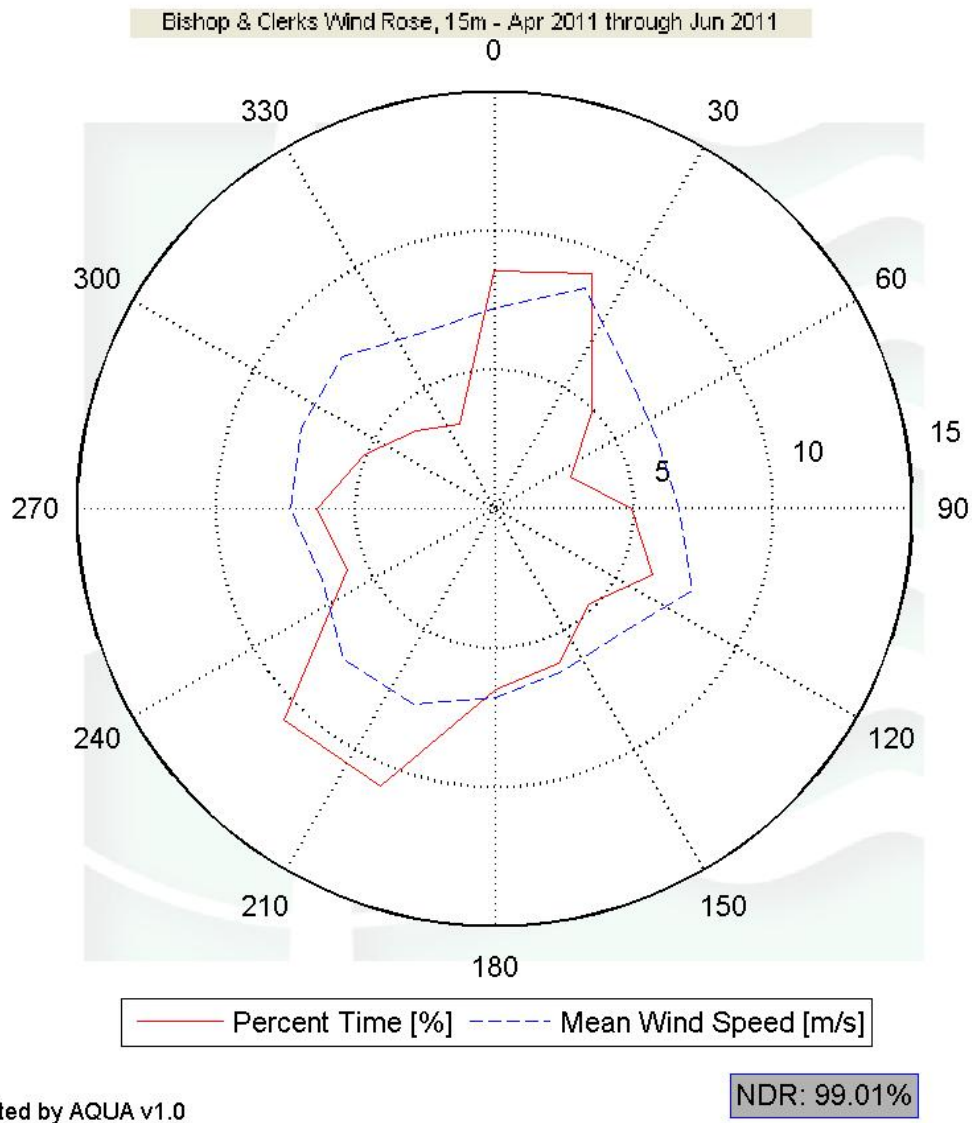


Figure 9 – Wind Rose

SECTION 5 - Significant Meteorological Events

No meteorological events occurred in this reporting period in the vicinity of Bishop and Clerks that were significant enough to affect quarterly statistics.

SECTION 6 - Data Collection and Maintenance

- On June 22, 2011, much of the equipment at Bishop & Clerks was replaced. The mast was moved from the badly rusted railing to a more secure location, attached to a large solar panel mount. The booms and sensors were replaced at this time.
- It was discovered during the maintenance trip described above that the direction of the wind vane booms had shifted, due to the insecure mounting of the mast on a badly rusted railing. Subsequently an analysis was performed using wind direction data from the nearby Massachusetts Military Reservation met tower to correct direction data for Bishop and Clerks. Data between December 13, 2010 and June 22, 2011 were corrected to reflect the actual position of the Bishop and Clerks wind vane booms during that period.

SECTION 7 - Data Recovery and Validation

All raw wind data are subjected to a series of tests and filters to weed out data that are faulty or corrupted. Definitions of these quality assurance (QA) controls are given below under Test Definitions and Sensor Statistics. These control filters were designed to automate the quality control process and used many of the previous hand-worked data sets made at UMass to affect a suitable emulation. The gross percentage of data recovered (ratio of the number of raw data points received to data points expected) and net percentage (ratio of raw data points which passed all QA control tests to data points expected) are shown below.

Gross Data Recovered [%]	97.29
Net Data Recovered [%]	53.23

Low net data recovery in this period is primarily due to poor performance of the Voltage sensor, secondary cup anemometer, primary RM Young anemometer, and secondary vane. Due to multiple sensor redundancies, statistics presented in this report are based on data covering 95% or more of each reporting period.

Test Definitions

All raw data were subjected to a series of validation tests, as described below. The sensors tested and the parameters specific to each sensor are given in the Sensor Performance Report which is included in APPENDIX A. Data which were flagged as invalid were not included in the statistics presented in this report.

MinMax Test: All sensors are expected to report data values within a range specified by the sensor and logger manufacturers. If a value falls outside this range, it is flagged as invalid. A data value from the sensor listed in Test Field 1 (TF1) is flagged if it is less

than Factor 1 (F1) or greater than Factor 2. This test has been applied to the following sensors (as applicable): wind speed, wind speed standard deviation, wind direction, temperature, and solar insolation.

$$F1 > TF1 > F2$$

MinMaxT Test: This is a MinMax test for wind direction standard deviation with different ranges applied for high and low wind speeds. A wind direction standard deviation data value (TF1) is flagged either if it is less than Factor 1, if the wind speed (TF2) is less than Factor 4 and the wind direction standard deviation is greater than Factor 2, or if the wind speed is greater than or equal to Factor 4 and the wind direction standard deviation is greater than Factor 3.

$$\begin{aligned} & (TF1 < F1) \\ & \text{or } (TF2 < F4 \text{ and } TF1 > F2) \\ & \text{or } (TF2 \geq F4 \text{ and } TF1 > F3) \end{aligned}$$

Icing Test: An icing event occurs when ice collects on a sensor and degrades its performance. Icing events are characterized by the simultaneous measurements of near-zero standard deviation of wind direction, non-zero wind speed, and near- or below-freezing temperatures. Wind speed, wind speed standard deviation, wind direction, and wind direction standard deviation data values are flagged if the wind direction standard deviation (CF1) is less than or equal to Factor 1 (F1), the wind speed (TF1) is greater than Factor 2 (F2), and the temperature (CF2) is less than Factor 3 (F3). To exit an icing event, the wind direction standard deviation must be greater than Factor 4.

$$CF1 \leq F1 \text{ and } TF1 > F2 \text{ and } CF2 < F3$$

CompareSensors Test: Where primary and redundant sensors are used, it is possible to determine when one of the sensors is not performing properly. For anemometers, poor performance is characterized by low data values. Therefore, if one sensor of the pair reports values significantly below the other, the low values are flagged. At low wind speeds (Test Fields 1 and 2 less than or equal to Factor 3) wind speed data are flagged if the absolute difference between the two wind speeds is greater than Factor 1. At high wind speeds (Test Fields 1 or 2 greater than Factor 3) wind speed data are flagged if the absolute value of the ratio of the two wind speeds is greater is greater than Factor 2.

$$\begin{aligned} & [TF1 \leq F3 \text{ and } TF2 \leq F3 \text{ and } \text{abs}(TF1 - TF2) > F1] \\ & \text{or } [(TF1 > F3 \text{ or } TF2 > F3) \text{ and } (\text{abs}(1 - TF1 / TF2) > F2 \text{ or } \text{abs}(1 - TF2 / TF1) > F2)] \end{aligned}$$

Sensor Statistics

A summary of the results of the data collection and filtering are given in the Sensor Performance Report which is included in APPENDIX A. The following categories of information, tabulated for each sensor, are included in that report.

Expected Data Points: the total number of sample intervals between the start and end dates (inclusive).

Actual Data Points: the total number of data points recorded between the start and end dates.

% Data Recovered: the ratio of actual and expected data points (this is the *gross data recovered percentage*).

Hours Out of Range: total number of hours for which data were flagged according to MinMax and MinMaxT tests. These tests flag data which fall outside of an expected range.

Hours of Icing: total number of hours for which data were flagged according to Icing tests. This test uses the standard deviation of wind direction, air temperature, and wind speed to determine when sensor icing has occurred.

Hours of Fault: total number of hours for which data were flagged according to CompareSensors tests. These tests compare two sensors (e.g. primary and redundant anemometers installed at the same height) and flag data points where one sensor differs significantly from the other.

% Data Good: the filter results are subtracted from the gross data recovery percentage to yield the *net data recovered percentage*.

APPENDIX A - Sensor Performance Report

Test Definitions

TestOrder	TestField1	TestField2	TestField3	CalcField1	CalcField2	CalcField3	TestType	Factor1	Factor2	Factor3	Factor4
1	itmp>T_val						MinMax	-30	60	0	0
2	VDC>V_val						MinMax	10.5	90	0	0
3	anem15a>WS_val						MinMax	0.3501	90	0	0
4	anem15a>WS_SD						MinMax	0	4	0	0
5	anem15b>WS_val						MinMax	0.3501	90	0	0
6	anem15b>WS_SD						MinMax	0	4	0	0
7	RMY15a>WS_val						MinMax	0.3501	90	0	0
8	RMY15a>WS_SD						MinMax	0	4	0	0
9	RMY15b>WS_val						MinMax	0.3501	90	0	0
10	RMY15b>WS_SD						MinMax	0	4	0	0
11	RMYvane15a>WD_val						MinMax	0	359.9	0	0
12	RMYvane15a>WD_SD						MinMax	0.01	100	0	0
13	RMYvane15b>WD_val						MinMax	0	359.9	0	0
14	RMYvane15b>WD_SD						MinMax	0.01	100	0	0
15	anem15a>WS_val	anem15b>WS_val					CompareSensors	1	0.25	3	0

Sensor Statistics

	Expected Data Points	Actual Data Points	% Data Recovered	Hours Out of Range	Hours of Icing	Hours of Fault	%Data Good
itmp	13104.000	13032.000	99.451	4.167	0.000	0.000	99.260
VDC	13104.000	13032.000	99.451	1979.000	0.000	0.000	8.837
anem15a	13104.000	13032.000	99.451	8.167	0.000	0.000	99.077
anem15b	13104.000	13032.000	99.451	1974.167	0.000	8.833	8.654
RMY15a	13104.000	11898.000	90.797	1924.833	0.000	0.000	2.663
RMY15b	13104.000	11898.000	90.797	7.833	0.000	0.000	90.438
RMYvane15a	13104.000	13032.000	99.451	8.167	0.000	0.000	99.077
RMYvane15b	13104.000	13032.000	99.451	1782.000	0.000	0.000	17.857
Total	104832.000	101988.000	97.287	7688.333	0.000	8.833	53.233

APPENDIX B- Plot Data

Wind Speed Distribution Data

Bin Center Wind Speed [m/s]	Percent Time [%]
0.5	0.60
1.5	2.33
2.5	5.05
3.5	8.53
4.5	12.25
5.5	13.40
6.5	11.51
7.5	9.10
8.5	8.48
9.5	7.83
10.5	6.30
11.5	3.90
12.5	3.47
13.5	2.63
14.5	1.75
15.5	1.12
16.5	0.76
17.5	0.50

Monthly Average Wind Speed Data

Month	Wind Speed at 15 m 10 min Average [m/s]
Apr-11	6.158
May-11	5.207
Jun-11	4.764

Diurnal Average Wind Speed Data

Hour of Day	Mean Wind Speed [m/s]
0	6.85
1	6.88
2	6.86
3	6.90
4	6.98
5	7.26
6	7.00
7	7.08
8	7.27
9	7.31
10	7.43
11	7.76
12	7.92
13	8.10
14	7.95
15	7.82
16	7.36
17	7.13
18	7.16
19	7.17
20	7.18
21	7.13
22	6.98
23	6.85

Wind Rose Data

Bin Center [deg]	Percent Time [%]	Mean Wind Speed [m/s]
0	8.56	7.21
22.5	9.16	8.57
45	4.92	6.80
67.5	2.94	6.37
90	4.92	6.61
112.5	6.16	7.70
135	4.81	6.38
157.5	6.02	6.35
180	6.49	6.77
202.5	10.80	7.59
225	10.74	7.69
247.5	5.72	6.73
270	6.41	7.35
292.5	5.07	7.54
315	3.98	7.74
337.5	3.29	6.86