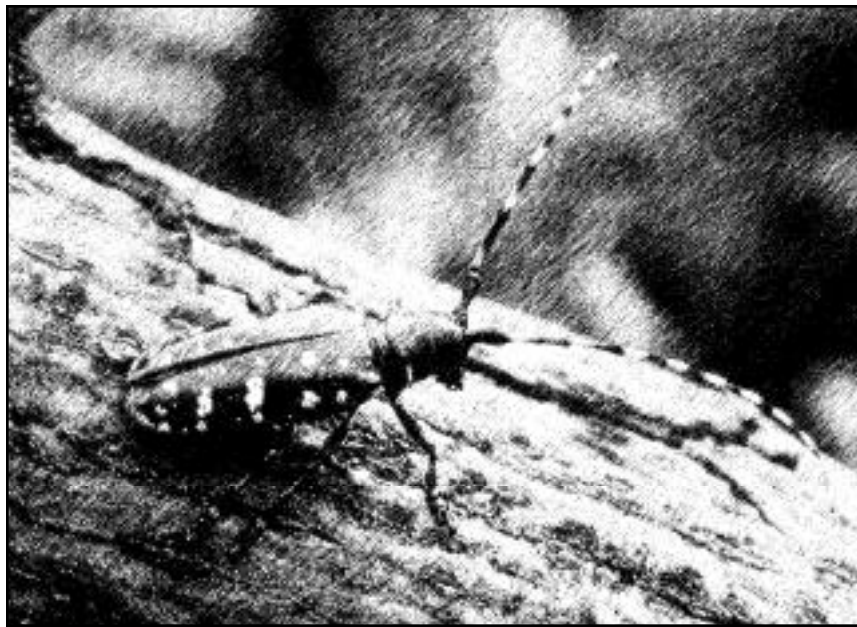


TRAINING RESOURCE MODULES -

MANAGING THE ASIAN LONGHORNED BEETLE IN THE NORTHEAST

Ver. 1.0



*Training Curriculum Materials for the
Identification of the Asian Longhorned Beetle*

*prepared by
USDA Forest Service, Northeastern Area
in cooperation with
USDA Animal and Plant Health Inspection Service (APHIS)
New York ReLeaf, Region 2
New York Department of Environmental Conservation
University of Massachusetts/Amherst*



United States
Department of Agriculture

Forest Service

Northeastern
Area



TABLE OF CONTENTS

OVERVIEW: THE TRAINING MODULES

MODULE A: IDENTIFICATION OF ALB HOST TREE SPECIES

MODULE B: ALB LIFE CYCLE AND IDENTIFICATION

MODULE C: DECISION TABLE FOR IDENTIFICATION OF ALB

MODULE D: DECISION TABLE FOR VISUAL SYMPTOMS IN TREES

MODULE E: FREQUENTLY ASKED QUESTIONS OF SURVEY TEAMS



*ASIAN LONGHORNED BEETLE
TRAINING RESOURCE MODULES*

OVERVIEW

THE TRAINING MODULES



ASIAN LONGHORNED BEETLE TRAINING RESOURCE MODULES

OVERVIEW

THE TRAINING MODULES

Recently, an introduced pest, the Asian Longhorned Beetle (ALB) has been found attacking and killing trees in the United States. The primary locations that the ALB has been found is in New York City, Long Island and Chicago. To aid in the control of this damaging insect, this modular training curriculum has been designed for use as a self-study or group instructional guide.

Five modules in the manual describe the various aspects of ALB damage on trees, including identification of ALB host trees, ALB life cycle, ALB identification, separating ALB damage on trees from other boring insects, and frequently asked questions of survey teams looking for ALB.

Used as an informational resource, the training modules offer pertinent information on many facets of the ALB. Used as a study guide, the booklet will help individuals or groups prepare for surveying quarantine areas where ALB is suspected of damaging trees. Each module includes activities to help learn the study material and concludes with a self-quiz that allows the user to test themselves on the information contained in the module.

Materials for this modular resource were compiled by the USDA Forest Service Northeast Center for Urban and Community Forestry at UMass Amherst with contribution and cooperation from the following agencies and sources:

*USDA Forest Service, Northeastern Area
USDA Forest Service, Durham Field Office
USDA Animal and Plant Health Inspection Service (APHIS)
New York ReLeaf, Region 2
New York Department of Environmental Conservation
University of Vermont
University of Massachusetts/Amherst*

