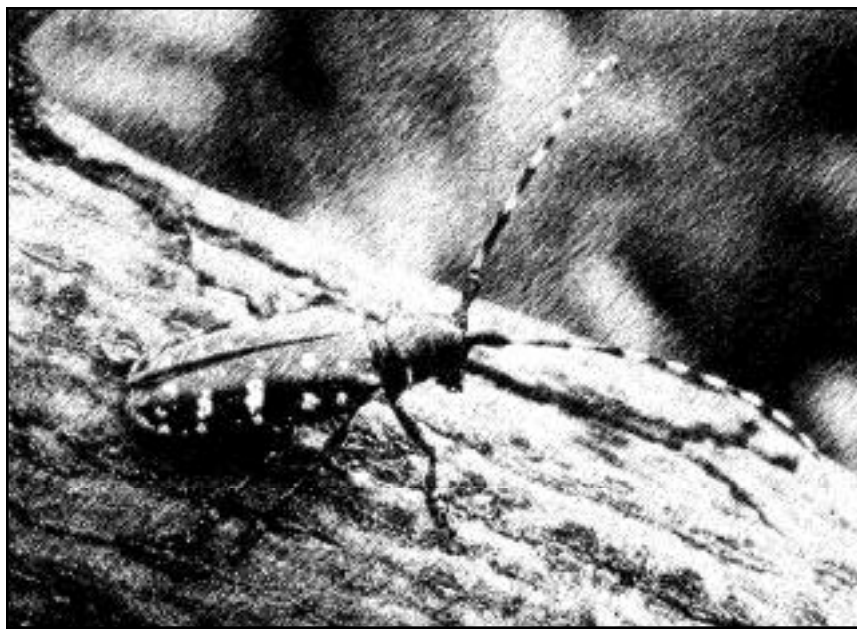


TRAINING RESOURCE MODULES -

MANAGING THE ASIAN LONGHORNED BEETLE IN THE NORTHEAST

Ver. 1.0



*Training Curriculum Materials for the
Identification of the Asian Longhorned Beetle*

*prepared by
USDA Forest Service, Northeastern Area
in cooperation with
USDA Animal and Plant Health Inspection Service (APHIS)
New York ReLeaf, Region 2
New York Department of Environmental Conservation
University of Massachusetts/Amherst*



United States
Department of Agriculture

Forest Service

Northeastern
Area



*ASIAN LONGHORNED BEETLE
TRAINING RESOURCE MODULES*

MODULE E

FREQUENTLY ASKED QUESTIONS OF SURVEY TEAMS



Module E: Frequently Asked Questions of Survey Teams

Materials

- 42. FAQ Sheets
- 43. Pencils for participants
- 44. Citizens guides
- 45. Beetle ID Card (Business size)

Goals

To provide participants with an overview of questions that are asked by the general public.

Objectives

At the end of this module participants will be able to:

- 12. Answer questions from the public regarding the ALB survey work in progress;
- 13. Provide the public with an overview of the inspection process
- 14. Provide the public with contact information for ALB sightings

Activities

PRESENTATION: FAQ sheets

WORKSHEET: Mini-quiz on 5 FAQ's.

FIELD EXERCISE: Class will divide into groups and ask questions of each other, with scores for correct answers.

Module Length: 1.5 hours

Module E: Frequently Asked Questions of Survey Teams

ACTIVITY 1: Presentation

When performing surveys for ALB, community residents, pedestrians, or drivers may ask questions regarding your activity. If community members are aware of the ALB phenomenon, they may express concern about the trees in their community and the tree(s) in front of their residence. The list of frequently asked questions (FAQ) offers proper responses to questions asked of survey team members as they conduct surveys of quarantine areas.

Knowing how to respond to queries about the survey team's activities and how to address residents' concerns about community trees will help survey team members maintain composure and defuse residents' concerns.

ACTIVITY 2: Inside Lab

Use the FAQ sheets to review questions that may be posed to you during surveys of quarantine areas and the appropriate responses to give to the questions. Becoming familiar with the questions and responses will help you handle situations that may arise during surveys of quarantine areas and will allow comfortable interaction with community members who are interested in your survey activities.

In groups of two or more, organize role-playing activities where one person impersonates an interested community member, asking questions of the survey team. The remaining persons pretend to be an actual survey team surveying a quarantine area. Team members should develop a protocol to handle queries. The protocol should facilitate communication between the team and the community member, the protocol should ensure that the community member's concerns are addressed and questions answered according to the responses provided in the packet.

ACTIVITY 3: Mini-Quiz Frequently Asked Questions of Survey Teams

A 10 question mini-quiz is provided to test your skill at responding to FAQ posed during surveys of quarantine areas. Take 10 minutes to complete the quiz.

Module E: Mini-Quiz
Frequently Asked Questions of Survey Teams

For questions 1-10, provide the appropriate response to the question asked:

- 1) What is being done to prevent more Asian longhorned beetles from getting into the country?
- 2) What does the Asian longhorned beetle look like?
- 3) Does the Asian longhorned beetle infest oak trees?
- 4) Wacha doin' mister, lookin' for boids?
- 5) What happens if you find a tree infested with the Asian longhorned beetle?
- 6) Will the Asian longhorned beetle get into my furniture or house?
- 7) How often can I expect you to come here?
- 8) Why are you doing this?
- 9) Where does the Asian longhorned beetle come from?
- 10) Where can I get more and updated information?