

Attention:

Hospital Environmental Services and Infection Prevention Officers

Insect Problems in Health Care Facilities: Flies and Bedbugs



⁶
Wednesday, April 1, 2009
3:00 to 5:00 p.m.
Holiday Inn, Marlborough MA

A two-hour program concerning the two major pest problems of health care facilities.

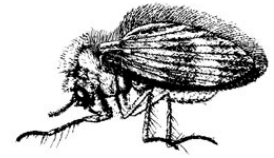
We will discuss the health risks caused by these pests and how to prevent, identify and eliminate infestations



Attention: Hospital Environmental Services and Infection Prevention Officers

Insect Problems in Health Care Facilities: Flies and Bedbugs

Wednesday, April 1, 2009 - 3:00 to 5:00 p.m.
Holiday Inn, Marlborough MA



Flies are a public health nuisance and have been implicated in the spread of many diseases. A number of fly species are common pests in health care facilities. These flies are very specific in their feeding habits and breeding areas. This workshop will show that by learning about fly biology, facilities managers can easily correct conducive conditions and prevent fly problems.

Bed bugs are becoming increasingly commonplace in public areas. They can easily be transported and, once established, are difficult to eradicate. The workshop will discuss bed bug biology, health effects, inspection techniques and methods used to avoid and eradicate infestations. Situations of hospitals and health care facilities will be emphasized.

Pesticide contact hours will be awarded:

Registration Form: The **pre-registration** fee is \$20 for employees of health care facilities (these registrations are subsidized by a grant from the Massachusetts Department of Agricultural Resources). Registration for all others, and at the door, is \$30. Send to: IPM Training, UMass Extension, French Hall, 230 Stockbridge Rd., Amherst, MA 01003.
Make checks payable to UMass.



UMass
Extension

Name(s) _____

Company _____
Address _____
City _____ State _____ Zip _____
Daytime phone # _____ Fax # _____
Email address _____
(confirmations will be emailed whenever possible)

Institutions may pre-register using a PR or PO #. FAX those registrations to (413) 577-1620.

PR/PO#:

Do you need an invoice sent to process this PO?
(Circle one) YES / NO



For more information, contact UMass Extension at (413) 545-0895, eweeks@umext.umass.edu, or Craig Hollingsworth at 413-545-1055, chollingsworth@umext.umass.edu.

This program is held in cooperation with and support from the
Massachusetts Department of Agricultural Resources.