

Research & Engagement

Mike Malone
Vice Chancellor

Update for the Faculty Senate
November 17, 2011



Agenda

- Extramural Funding
- UMass Innovation Institute
- AdQUAD – the “Development” phase
 - Organizational Changes
 - Research Development
- Engagement

Sponsored Research Awards

FY	N	Direct	Indirect	Total
2011	1,094	\$109,083,423	\$31,651,374	\$140,734,797
2010	1,135	\$133,466,649	\$36,526,859	\$169,993,508
2009	1,140	\$108,569,487	\$28,834,658	\$137,404,145

ARRA totals

2011	\$ 5,523,231
2010	\$39,973,864
2009	\$ 2,374,395

Institutional Peers – FY 2009

DRAFT	Research	TS	Expend per	
	Expenditures	Faculty	TSF	
Stony Brook	258,098	933	277	
Maryland	409,190	1527	268	
UC Santa Barbara	215,728	814	265	
Colorado	282,530	1155	245	
Rutgers	351,564	1569	224	
Iowa State	224,311	1334	168	
Nebraska	190,335	1171	163	
UMass Amherst	156,216	997	157	
Delaware	124,475	914	136	
Indiana	147,767	1523	97	
UConn	101,900	1216	84	

Source: NSF, institutions & ipeds. Dollars in 1000s.

Federal Funding

- President bullish on research, esp. NSF, NIST, DOE Science
 - http://assets.opencrs.com/rpts/R41706_20110329.pdf
- 2011: (CR) NSF -1% actual vs. +8% request
- 2012: (CR) in process, 0%H/-2.4%S, but +2.5% Conference
- 2013: OMB directed agencies to plan for -5 and -10%
- What we are doing
 - New firms for federal agency and legislative relations
 - Research Development, Reorganization and Staff additions
 - Supporting legislation for state matching funds (H 3563)
- What you can do
 - Support legislative input via professional societies
 - Take advantage of new support as it becomes available
 - Larger initiatives, especially related to innovation
 - Private sector funding via UMII

Innovation

- An urgent national priority

“... many other nations have been markedly progressing, thereby affecting America’s relative ability to compete effectively for new factories, research laboratories, administrative centers—and *jobs*. While this progress by other nations is to be both encouraged and welcomed, so too is the notion that Americans wish to continue to be among those peoples who prosper.

The only promising avenue for achieving this latter outcome, in the view of the Gathering Storm committee and many others, is through innovation.”

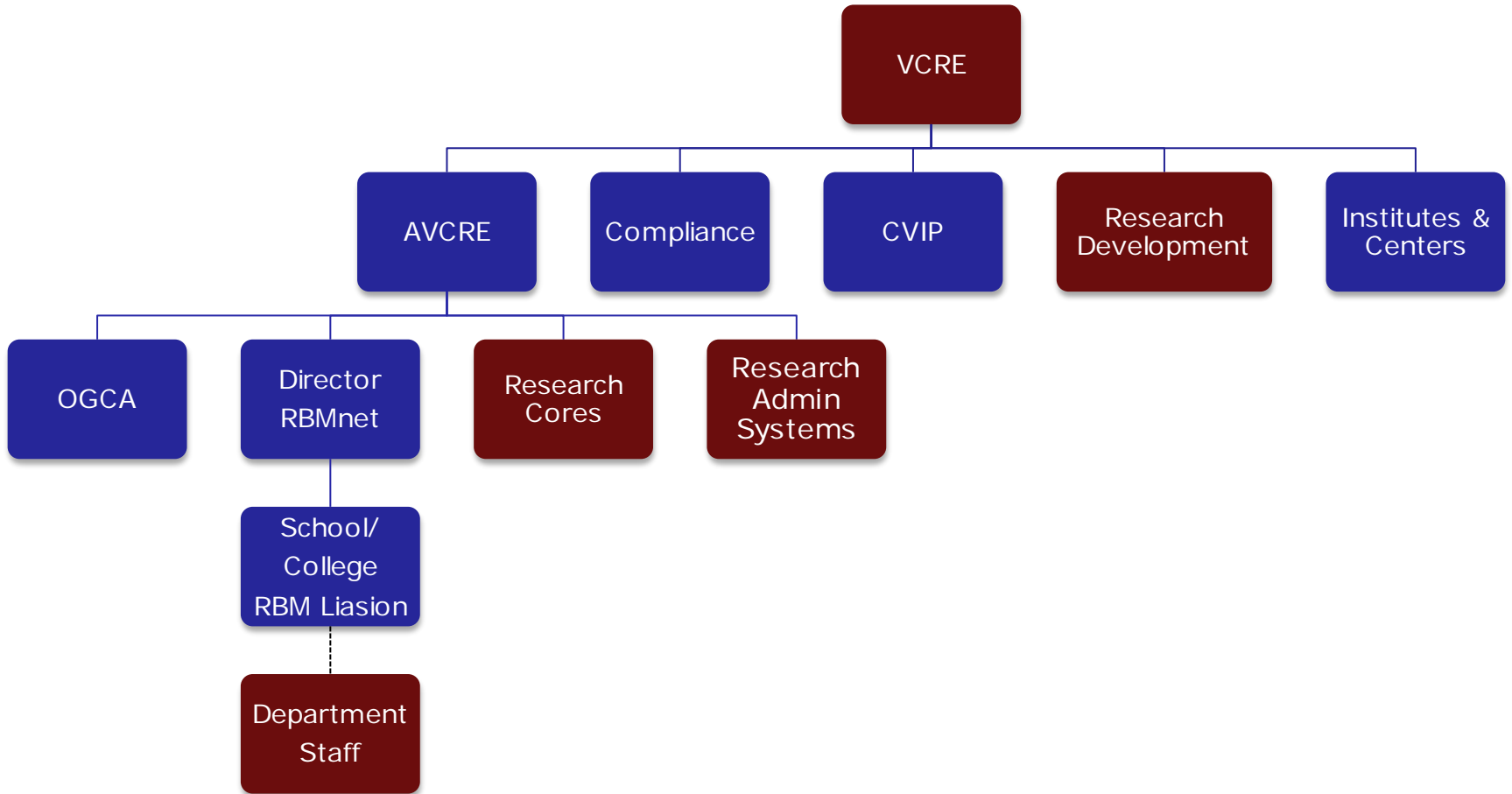
-- Rising Above the Gathering Storm, Revisited:
Rapidly Approaching Category 5, NAP (2011)

- that is fully aligned with the Land Grant mission and
- the Massachusetts Innovation Economy.

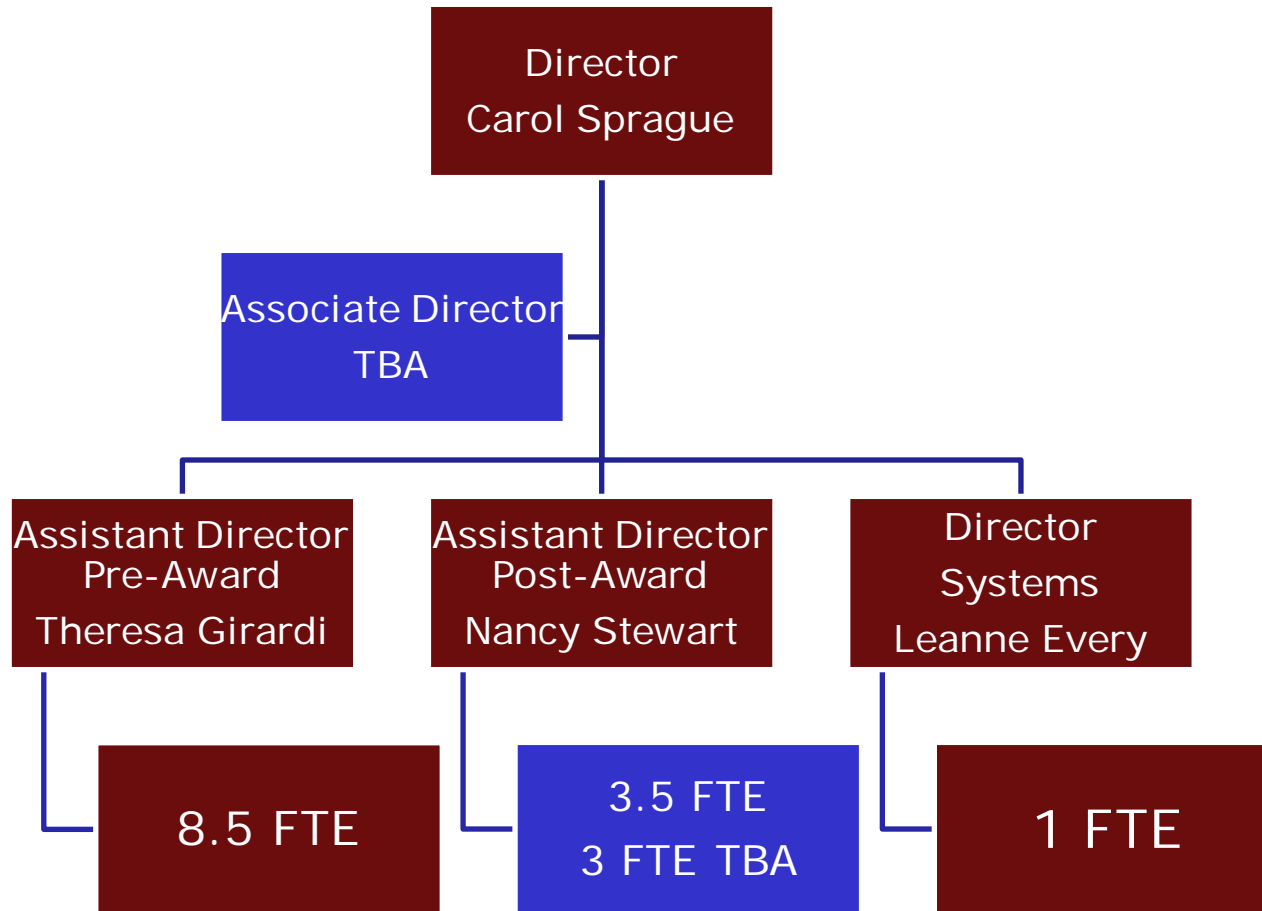
UMass Innovation Institute (UMII)

- Campus institute focused on applied research to complement existing research with an emphasis on innovation.
- Established summer 2011 with endorsement of the campus and the President's office. Senate review in process.
- Single point of contact for private sector, with flexible terms to facilitate new applied research
- Applied: \$1.5 m + \$2 m in progress
- Related Basic: \$675,000 + \$ 425,000 in progress
- Jim Capistran, capistran@umass.edu, 577-1518

Organization



Grants and Contracts Reorganization



Research Development

- Services
 - Early Stage Proposal Development
 - Research Development Workshops
 - Government Relations for Research
- Initiatives
 - Life Sciences, Dr. Tom Hankinson
 - Wind Energy, Ms. Carter Wall
 - Cybersecurity, Prof. W. Burleson
- www.umass.edu/research/development
- Loren Walker, 577.3725, loren@research.umass.edu

Academic Analytics – peer selection tool

Peer Institution	Variables in Proximity
Stony Brook University, State University of New York	4
The University of Arizona	3
Northwestern University	2
University of Georgia	2
Stanford University	2
Washington University in St. Louis	2
Case Western Reserve University	2
University of California, Davis	
University of Wisconsin - Madison	
Duke University	
Southern Methodist University	
Arizona State University	
The Pennsylvania State University	
University of Alaska Fairbanks	
Brown University	
The Ohio State University	
University of Michigan	
The University of Chicago	
University of Pittsburgh	
Johns Hopkins University	
University of Pennsylvania	
University of Colorado at Boulder	
University of Connecticut	
Boston University	
Binghamton University, State University of New York	
University of California, Los Angeles	
University of Illinois at Urbana-Champaign	
Brandeis University	
University College London	
University at Albany, State University of New York	
George Washington University	
Wayne State University	
The City University of New York	1
University at Buffalo, State University of New York	1
Harvard University	1
University of South Florida	1

Variables:

Institution Criteria
[Switch To Manual Peer Selection](#)

Academic Analytics Classification:

CGS Region:

State:

Association of American Universities (AAU) Member:

Public or Private:

Land Grants:

Variable Selection

Click the variables and use the arrow buttons to select and un-select the variables to include in the report.

Available Variables		Selected Variables
<ul style="list-style-type: none"> Citations - Citations per Faculty Member Citations - Citations per Publication Citations - Number of Faculty With Citation Citations - Percentage Authors With Citation Citations - Percentage of Faculty With Citation Citations - Total Citations Honors - Awards per Faculty Member Honors - Number of Faculty Members With Award Honors - Percentage of Faculty With Award Honors - Total Awards Journals - Journal Publications per Author Journals - Journal Publications per Faculty Member Journals - Number of Faculty With a Journal Publication Journals - Percentage of Faculty With Journal Publication Journals - Total Journal Publications 	>> <<	<ul style="list-style-type: none"> Grants - Dollars per Grant Grants - Grant Dollars per Faculty Member Grants - Grants per Faculty Member Grants - Number of Faculty Members With Grant Grants - Percentage of Faculty With Grant Grants - Total Grant Dollars Grants - Total Number of Grants

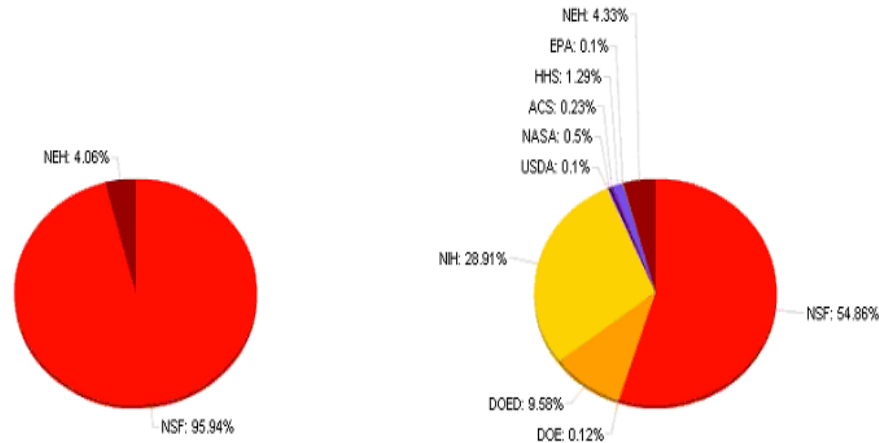
Number of schools above selection to compare:

Number of schools below selection to compare:

Academic Analytics – “Grants Marketshare”

Dept. Health and Human Services	0%	\$1,601,588
Environmental Protection Agency	0%	\$122,192
Federal Aviation Administration	0%	\$0
National Aeronautics and Space Administration	0%	\$615,858
National Endowment For the Arts	0%	\$0
National Endowment for the Humanities	2%	\$5,381,318
National Institutes of Health	0%	\$35,922,602
National Oceanic and Atmospheric Administration	0%	\$0
National Science Foundation	3%	\$68,174,682
Office of Naval Research	0%	\$0

Program | **Funding for AA Classification**



Compliance

- Director of Research Compliance, J. A. Donais (jadonais@research.umass.edu)
- New NIH Conflict of Interest (FCOI) Rules.
- Continued attention to Effort Reporting, especially training and schedule.
- Response to RFI on reduction of burden
 - UMass
 - COGR (<http://www.cogr.edu/>)
 - APLU/AAU (<https://www.aplu.org/>)

Engagement - Research Council

- To advance the research mission of the University
- To advise the Administration on policy issues and major changes regarding the Research Trust Fund expenditures
- To review and make recommendations regarding the awarding of research and scholarship grants and awards
- To make recommendations to the Faculty Senate relating to the approval of new research Centers and Institutes
- Chair: Prof Mike Maroney, Chemistry
- Communications Officer: Prof. Sharon M. Mills-Wisneski, millswis@nursing.umass.edu
- <http://www.umass.edu/research/research-council>

Thank You

Questions

