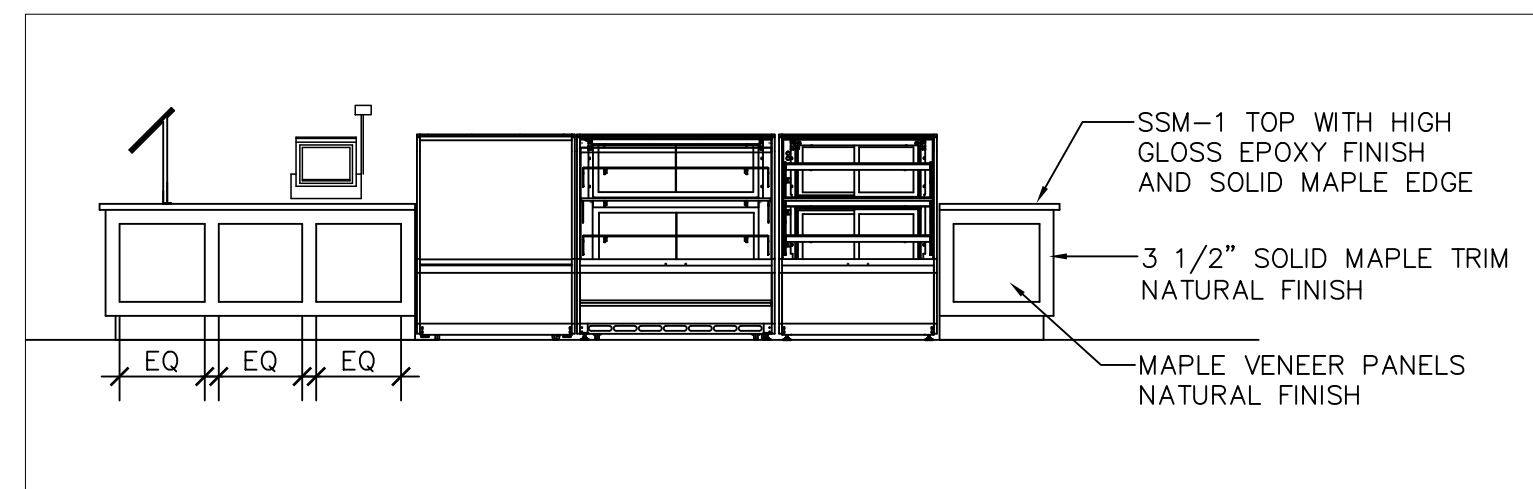
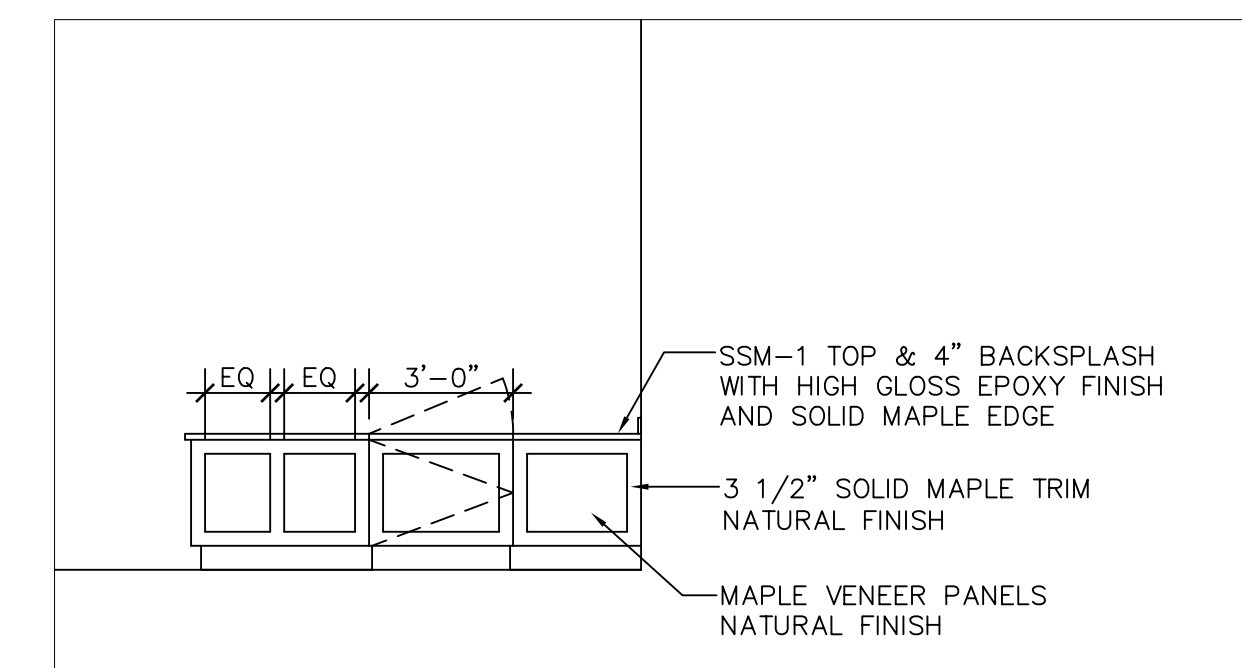


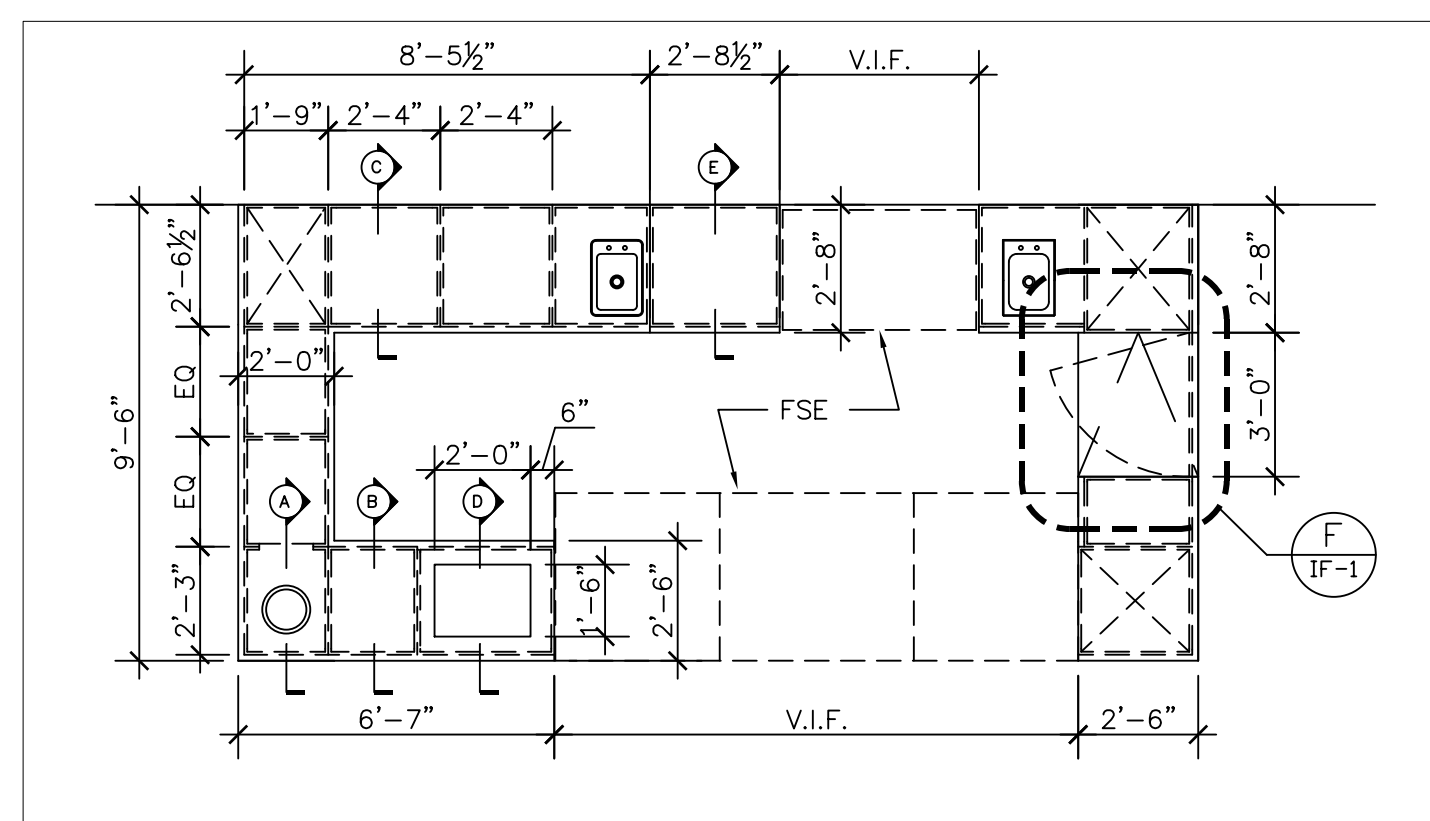
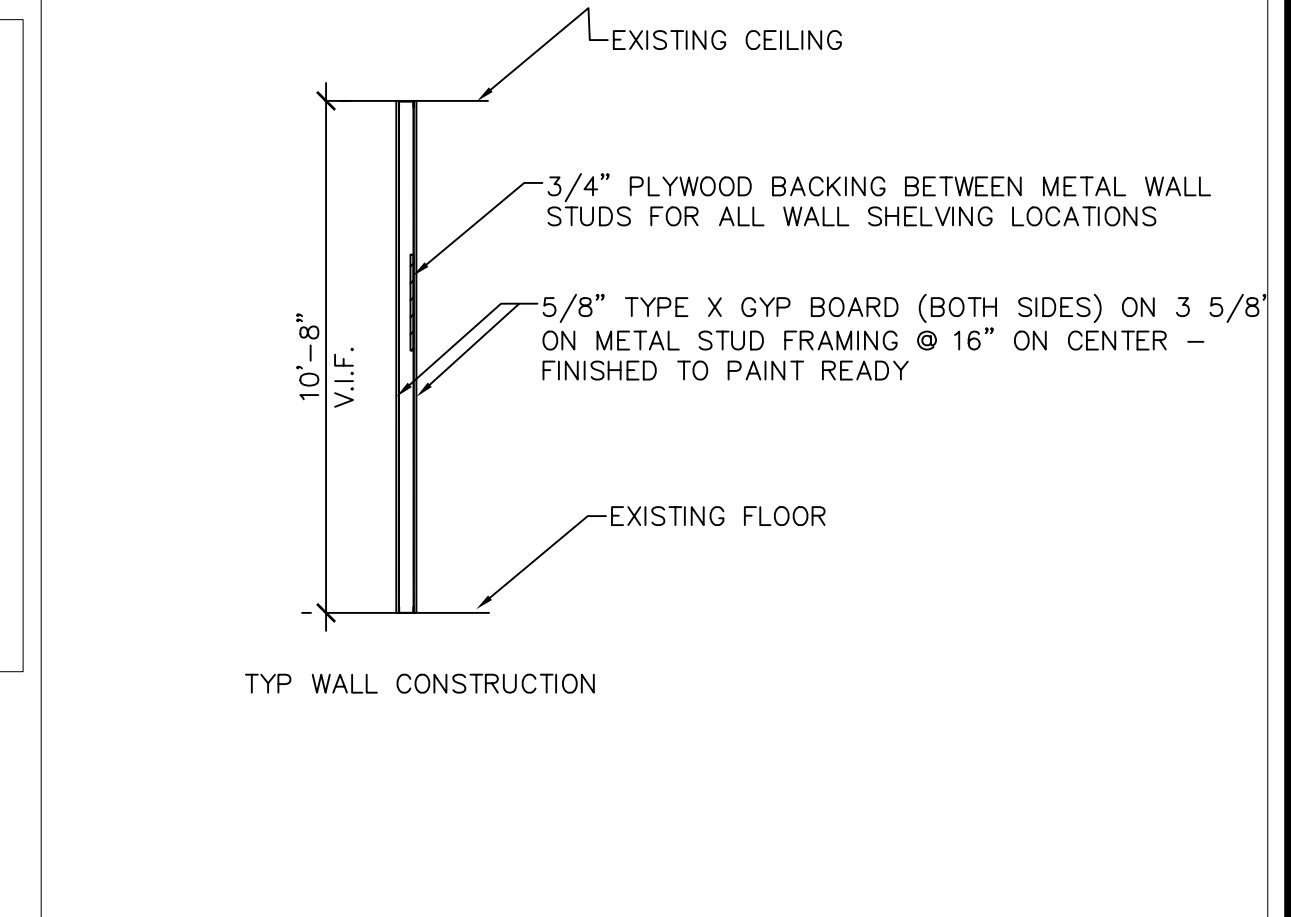
1 ELEVATION
1/4" = 1'-0"



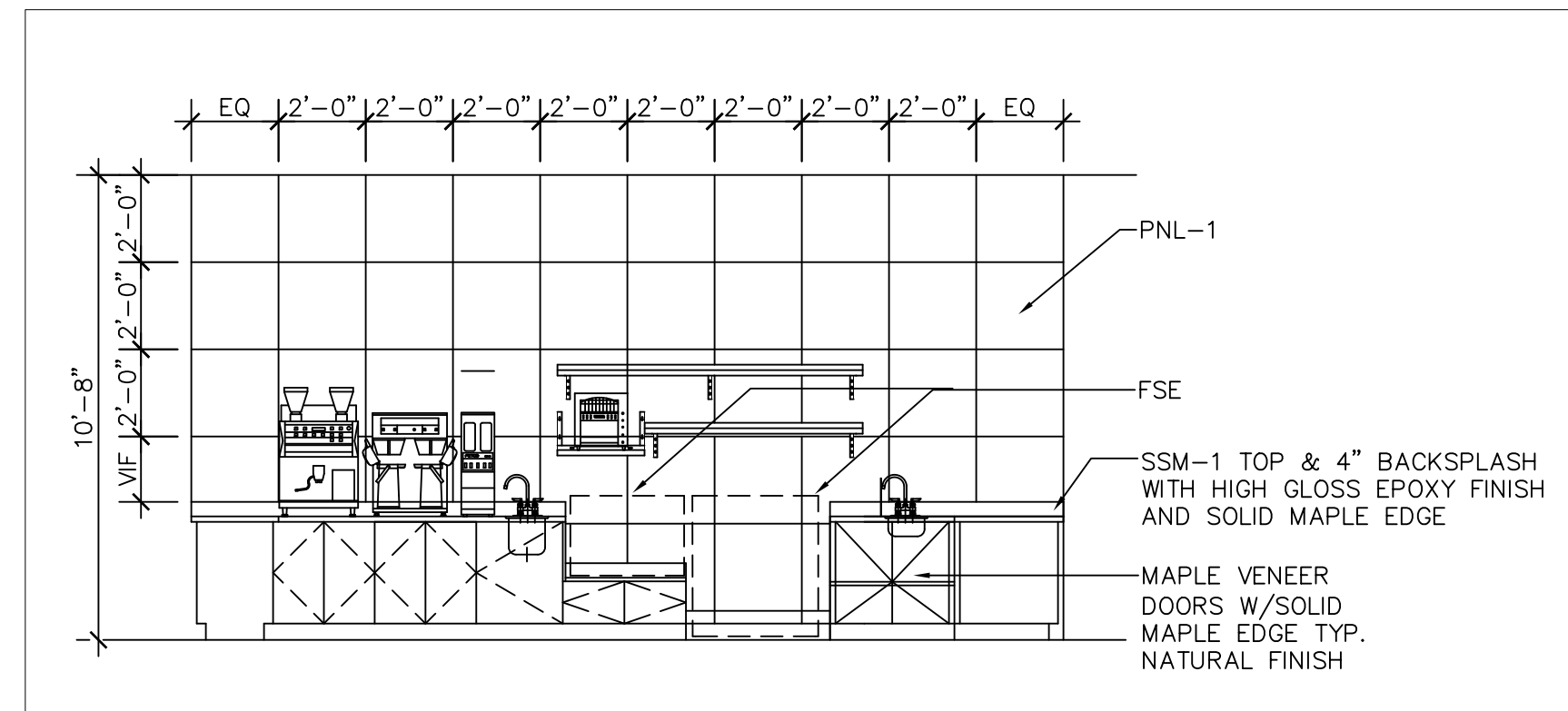
2 ELEVATION
1/4" = 1'-0"



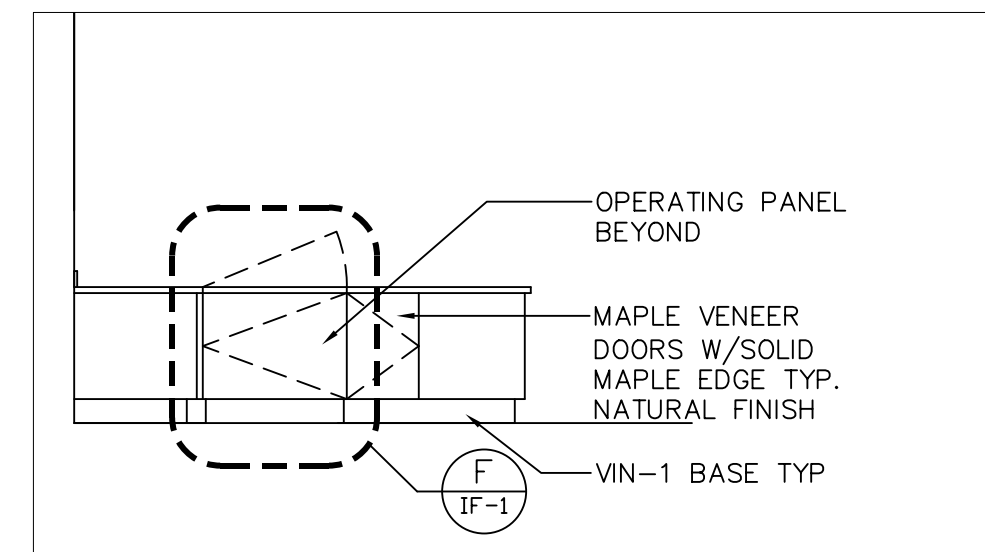
3 ELEVATION
1/4" = 1'-0"



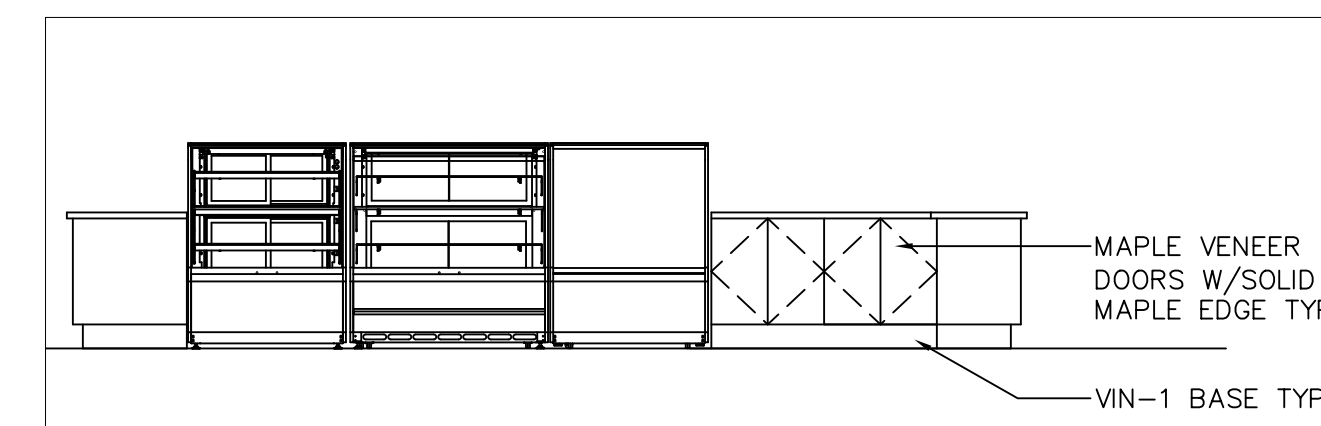
B FLOOR PLAN
1/4" = 1'-0"



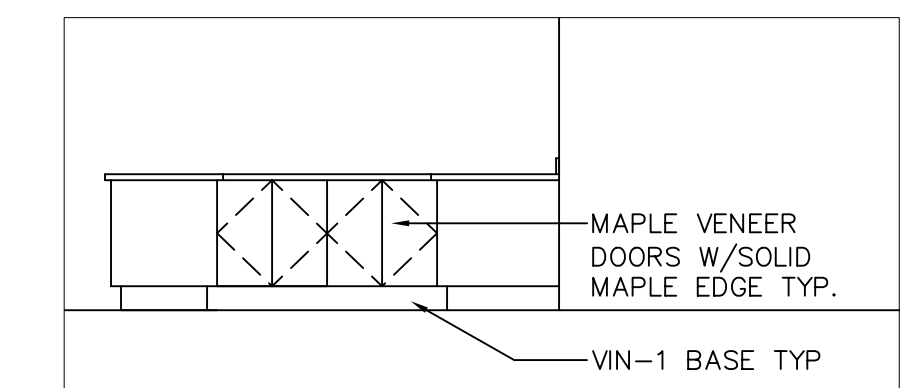
4 ELEVATION BACK WALL DETAIL
1/4" = 1'-0"



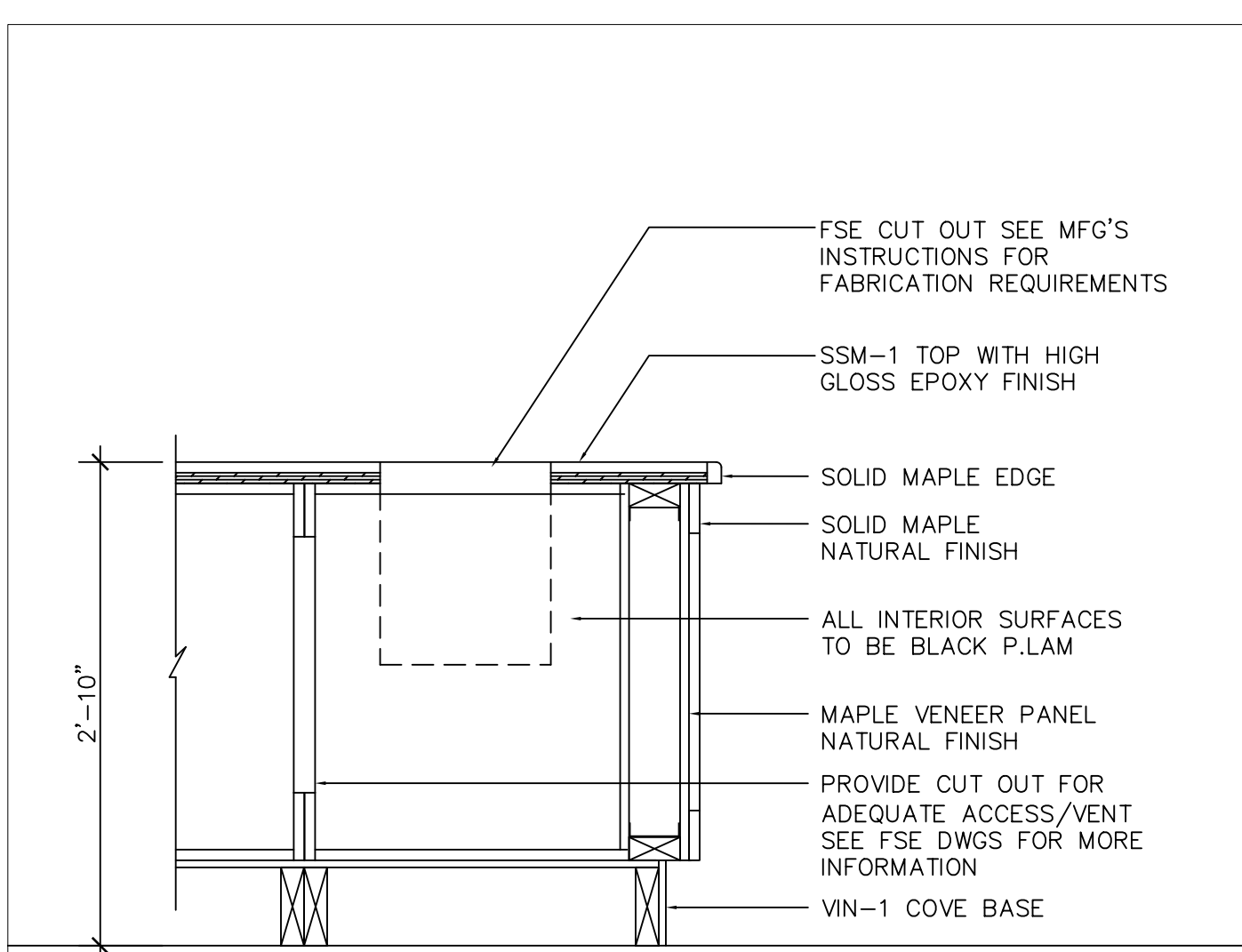
5 ELEVATION
1/4" = 1'-0"



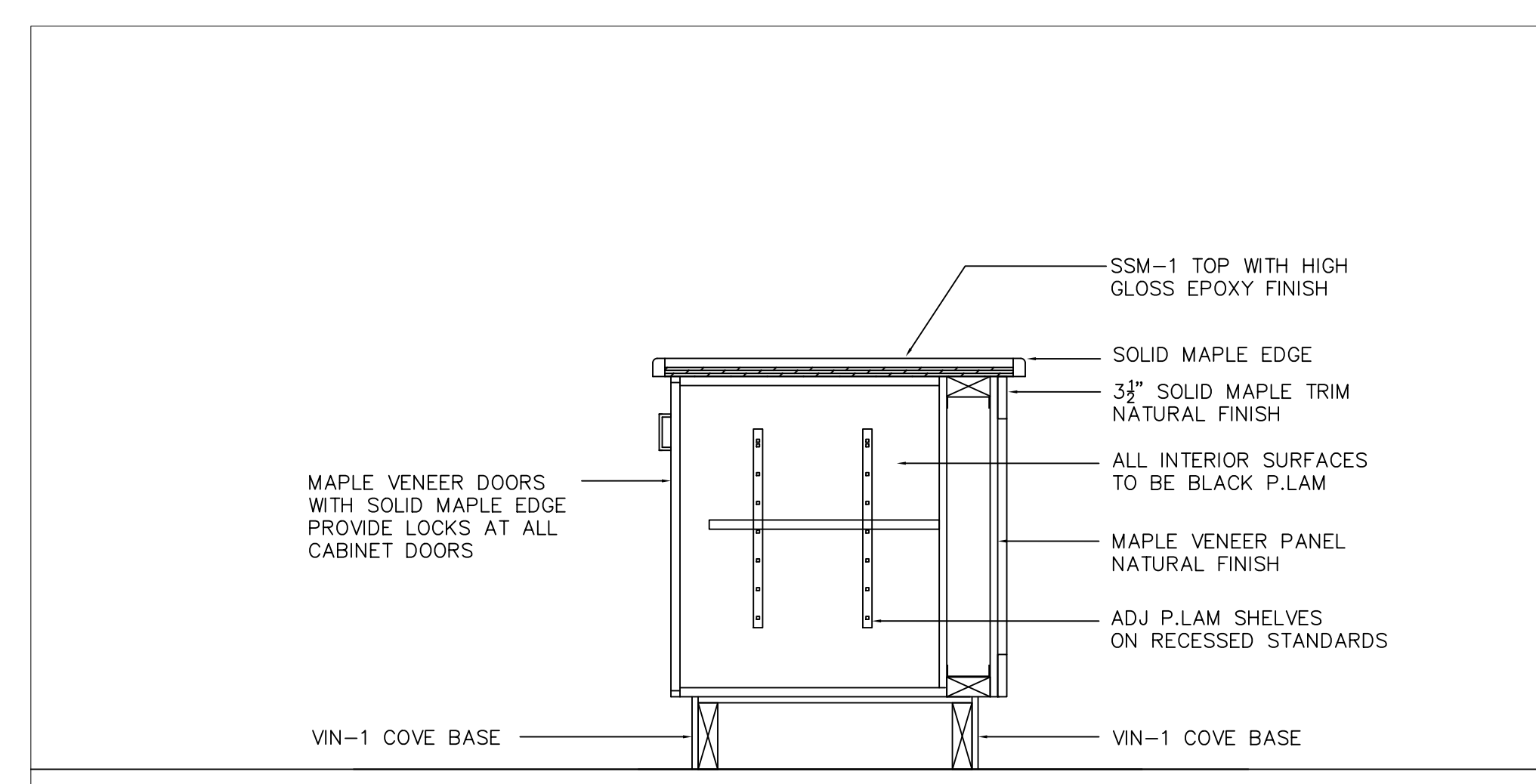
6 ELEVATION
1/4" = 1'-0"



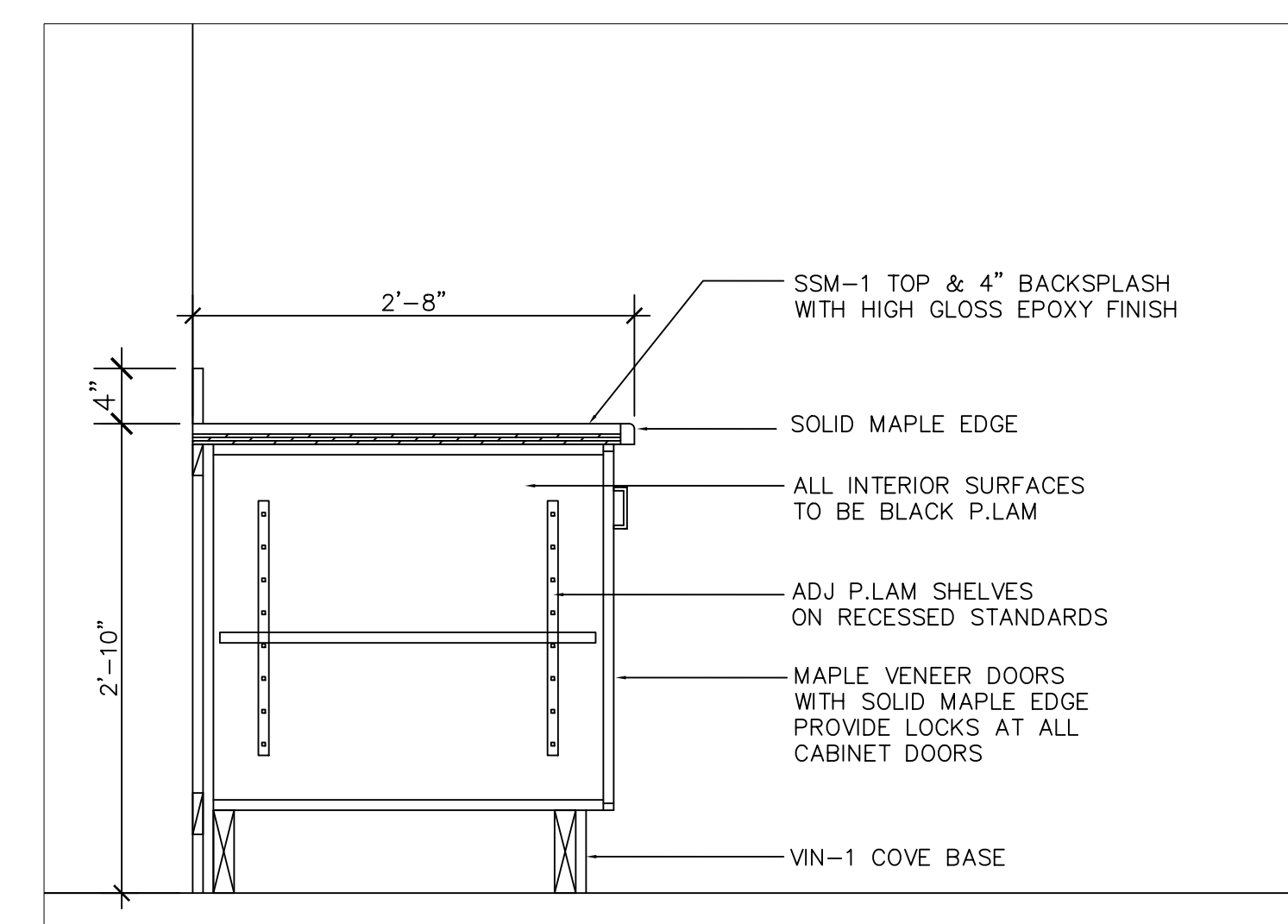
7 ELEVATION
1/4" = 1'-0"



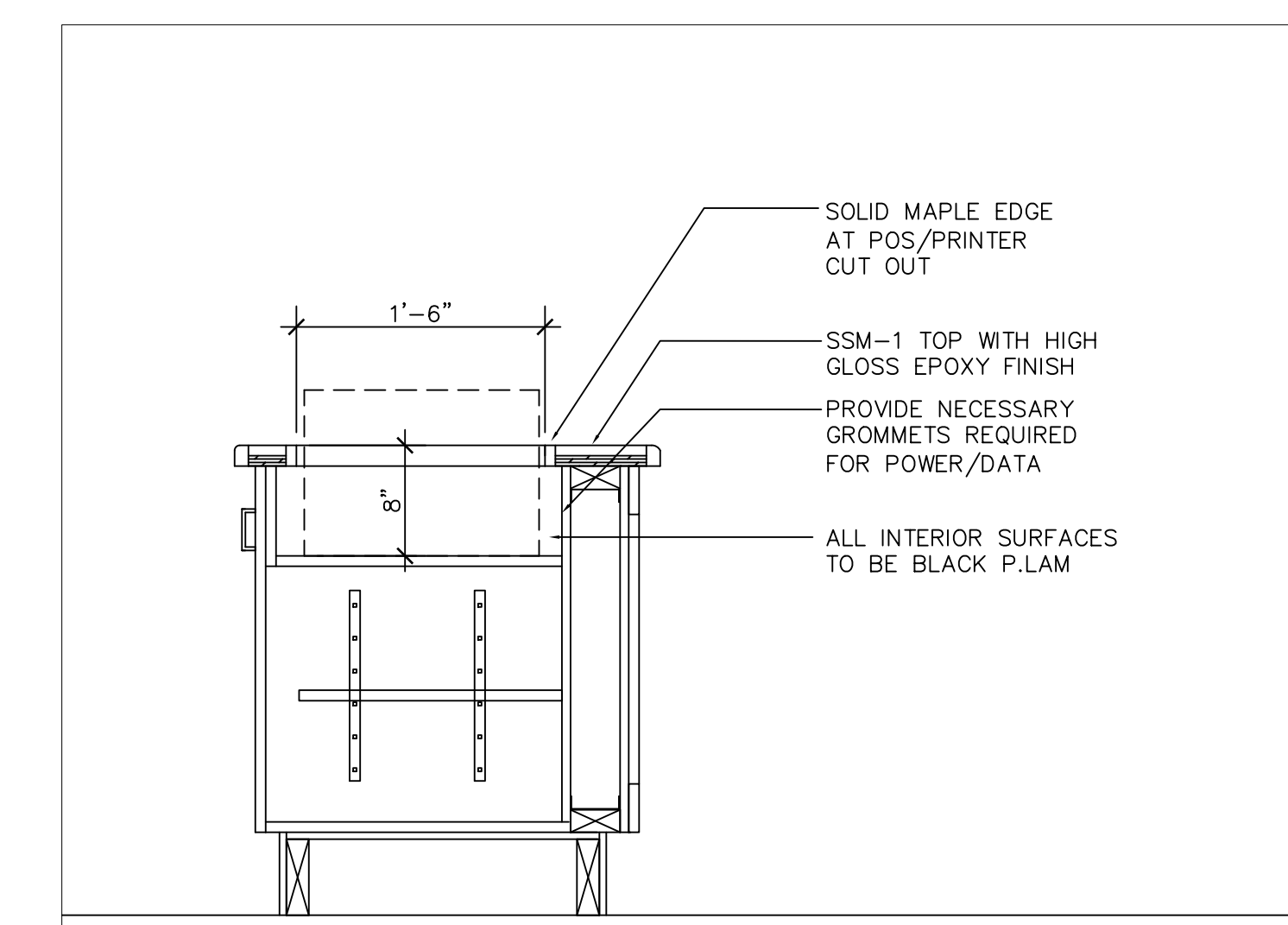
A FLOOR PLAN SECTION @ DROP IN



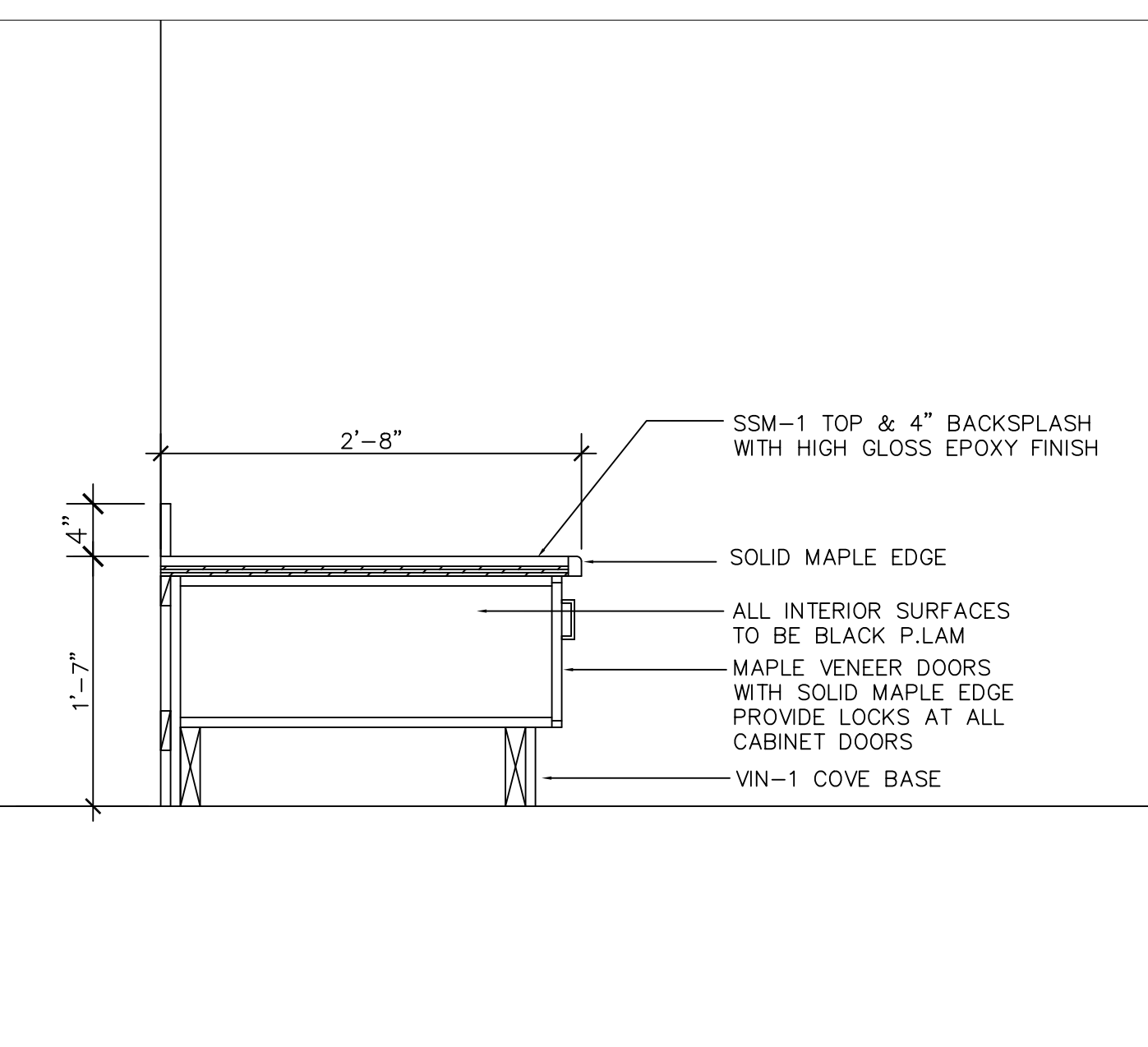
B SECTION @ FRONT/SIDE COUNTER
1" = 1'-0"



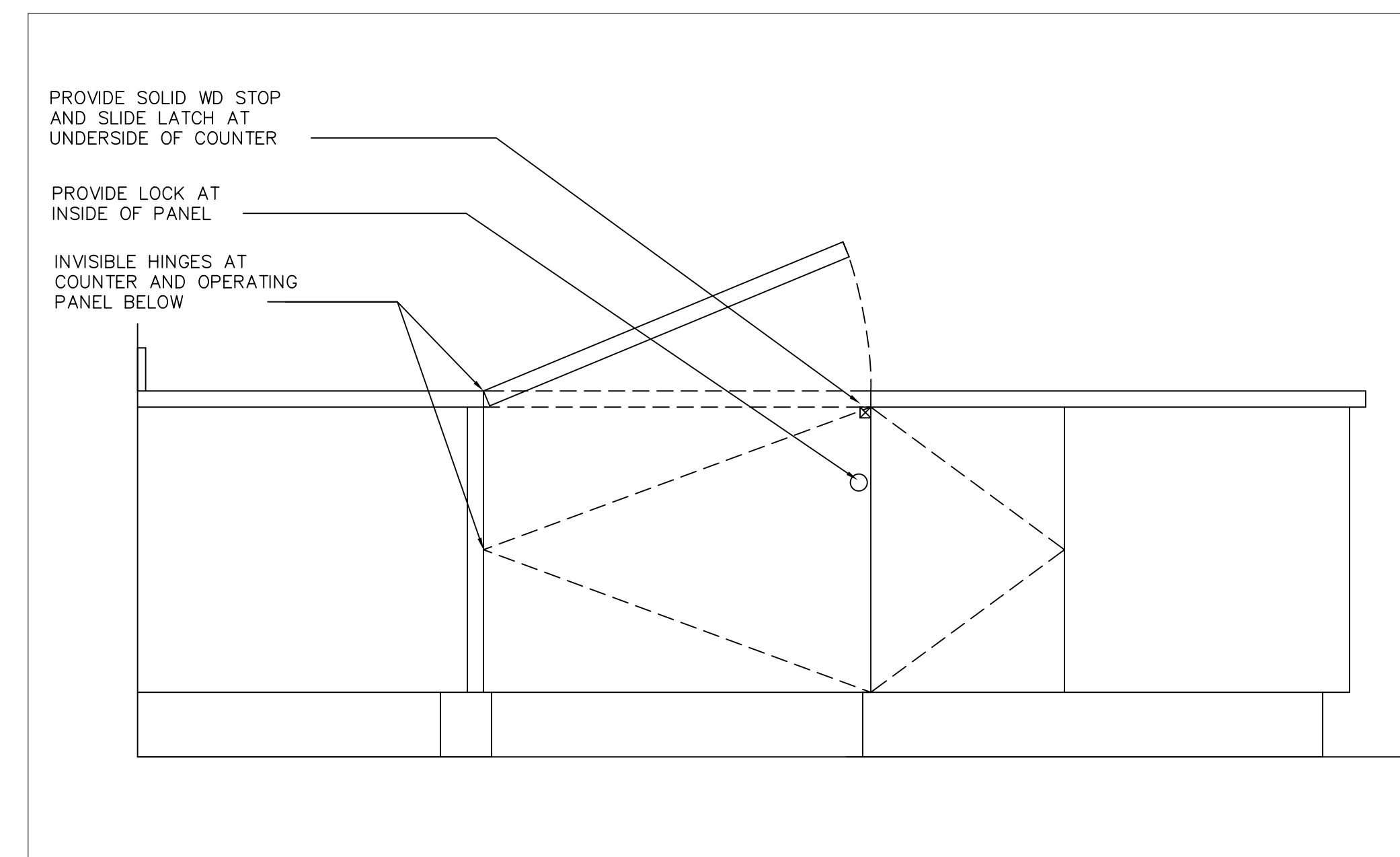
C SECTION @ REAR COUNTER
1" = 1'-0"



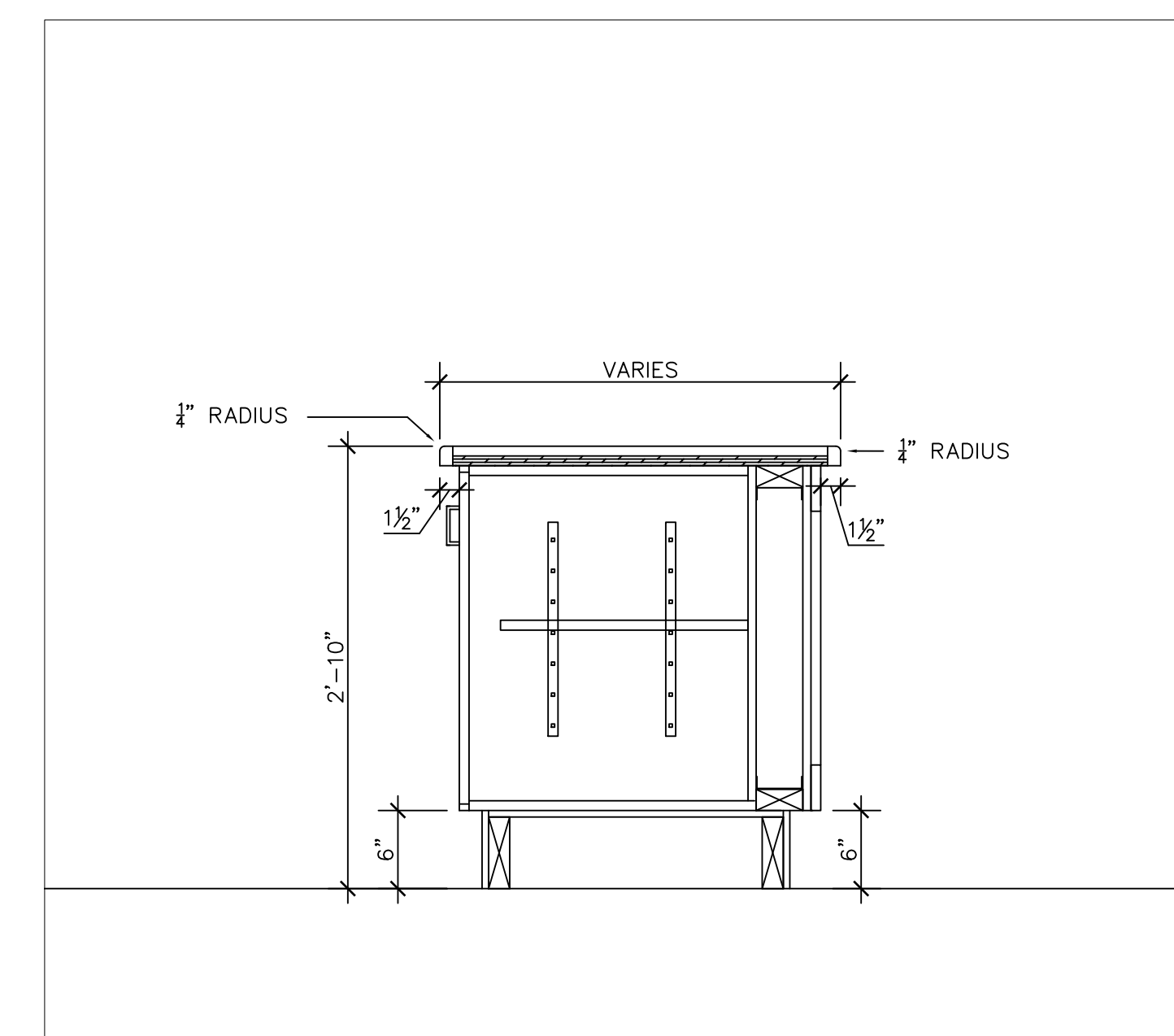
D SECTION AT POS
1" = 1'-0"



E SECTION @ LOW REAR COUNTER
1" = 1'-0"



F DETAIL @ OPERATING PANELS
1 1/2" = 1'-0"



G TYP COUNTER DIMENSIONS
1" = 1'-0"

LEGEND OF MATERIALS

SSM-1	MFG STYLE COLOR SIZE	KIREI USA KIREI BOARD SURFACE HIGH GLOSS EPOXY 20mm
PNL-1	MFG SYSTEM LAMINATE EDGE FINISH	MARLITE CONNECTIONS FORMICA 756-58 NATURAL MAPLE 270 CLEAR SATIN ANODIZED
VIN-1	MFG STYLE COLOR SIZE	JOHNSONITE TRADITIONAL VINYL BASE 40 BLACK 6"

CONTACT
JAMES McEDWARD
(330)260-7627
JMCEDWARD@MARLITE.COM

THIS DOCUMENT INCLUDING THE IDEAS AND DESIGNS INCORPORATED HEREIN ARE THE PROPERTY OF CROMWELL CONSULTING, INC. AND SHALL NOT BE USED IN WHOLE OR PART WITHOUT WRITTEN NOTICE FROM CROMWELL CONSULTING, INC.

CROMWELL CONSULTING, INC.
27 Glen Street, Suite 5, Stoughton, MA 02072
Phone (781)344-7691 Fax (781)344-7694

Revisions

Drawn by	Checked by	Date Issued	Date Printed
SMB	ATC	04/22/2005	04/22/2005

UMASS AMHURST FRENCH MEADOW PROJECT #

IF - 1