



# Sustainability Survey

## UMass Amherst - Fall 2019

### Staff Report

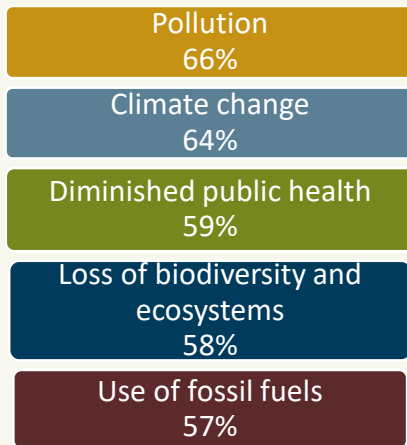
In Fall 2019, UMass Amherst conducted a *Sustainability Survey* to gather information to support the University’s academic, research, and campus initiatives that promote sustainable living practices in a collaborative environment. Representatives from the School of Earth and Sustainability and University Relations collaborated with OAPA to develop the survey in house after reviewing several surveys conducted by other institutions.

The survey employed the United Nations’ definition of sustainability (“*meeting the needs of the present without compromising the ability of future generations to meet their own needs*”), and sets of questions focused on sustainability awareness and attitudes, behaviors and practices consistent with sustainable living, and University efforts and initiatives.

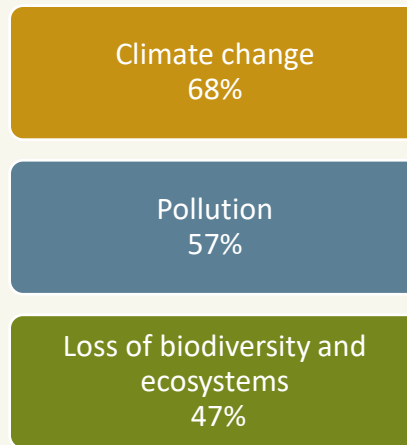
This report communicates survey results for staff. A random sample of 2000 were invited to complete the online, confidential survey and 25.4% (n=506) participated. Table 1 compares demographic characteristics of survey participants with those of the staff population overall.

<b>Table 1: Demographic Characteristics</b>	<b>Survey Participants</b>	<b>Staff Population Overall</b>
<b>Women</b>	64.4%	51.8%
<b>Men</b>	35.6%	48.2%
<b>Asian</b>	4.0%	12.8%
<b>Black or African American</b>	2.6%	5.1%
<b>Hispanic</b>	3.0%	6.2%
<b>White</b>	87.0%	72.4%
<b>Two or more races</b>	1.0%	.9%
<b>Another race/ethnicity</b>	.6%	.6%
<b>Not reported</b>	1.8%	2.1%
<b>Academic Affairs</b>	55.3%	36.2%
<b>Administration &amp; Finance</b>	19.0%	38.3%
<b>Athletics</b>	1.0%	2.7%
<b>Chancellor’s Area</b>	1.0%	.8%
<b>Development &amp; Alumni Relations</b>	1.4%	1.1%
<b>Information Technologies</b>	4.3%	4.0%
<b>Research &amp; Engagement</b>	3.0%	2.2%
<b>Student Affairs &amp; Campus Life</b>	12.1%	12.9%
<b>University Relations</b>	2.8%	1.9%

Conditions that vast majorities believe will negatively impact their generation's quality of life  
(% saying "To a great extent")



The three issues staff are most concerned about  
(% selecting)

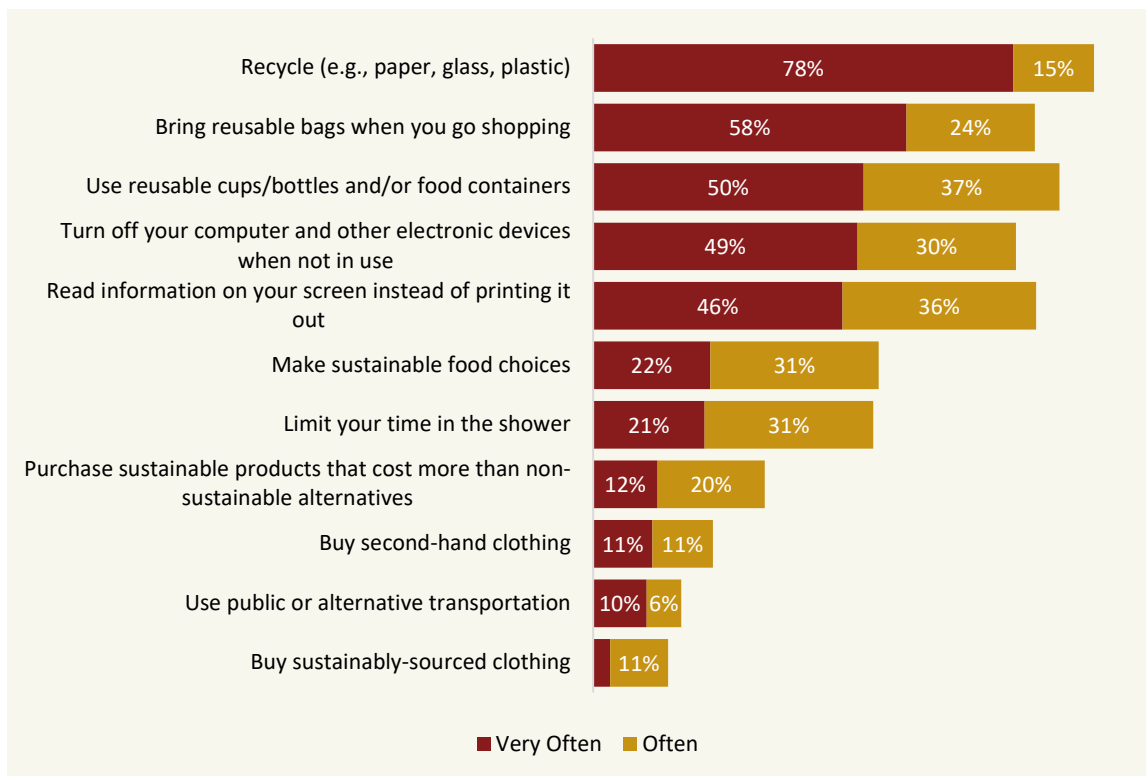


48% perceive that sustainability is a University priority "To very great extent" or "To a great extent"

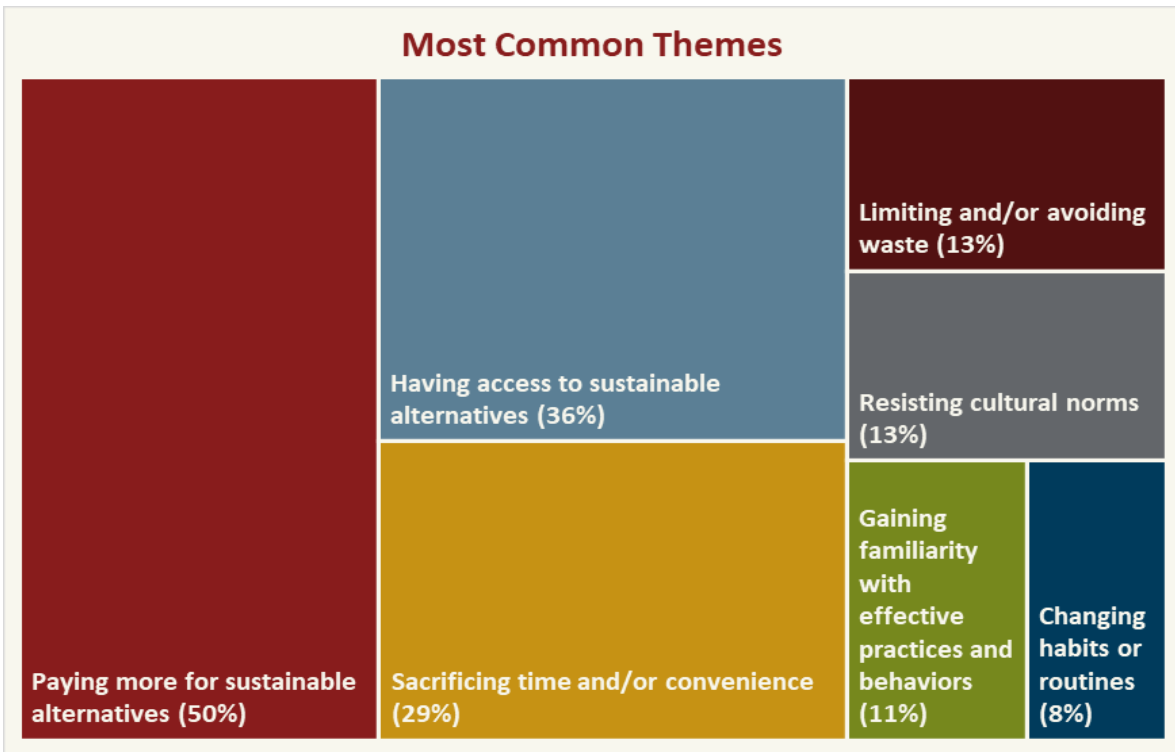
37% are "Very Interested" in contributing to campus sustainability efforts and initiatives

44% are "Very Motivated" to adopt behaviors and practices oriented toward sustainability

### Sustainability-focused behaviors and activities



**When it comes to adopting sustainability-oriented behaviors and practices, what are your biggest challenges? (Open-Ended question, n=331)**



**Awareness of sustainability initiatives at UMass Amherst  
(% Very Aware or Somewhat Aware)**



Three sustainable institutional areas the University should focus on most

Recycling and waste reduction on campus  
61%

Increased use of clean energy to meet campus energy needs  
61%

Prioritizing sustainable purchasing for University supplies and services  
44%

Perceived obstacles to recycling and composting at UMass Amherst

