

DEFINITIONS AND SOURCES

ACADEMIC QUALITY INDICATORS

Doctorates Awarded Total number of Doctorates awarded by UMass campuses for the academic year 2008-09, which includes September 2008, January 2009, and May 2009 award dates.

Research Expenditures. FY 2009 data as reported to the National Science Foundation (NSF) through its annual Survey of R&D Expenditures at Universities and Colleges.

License Income. Amount of annual income from license agreements as reported to the Association of University Technology Managers for its annual survey.

ACCESS AND AFFORDABILITY INDICATORS

Tuition and Fees as a Percentage of Family Income. Tuition and mandatory fees for in-state undergraduates (FY 2009) as a percentage of state-wide median family income as reported by US Census in 2008 inflation-adjusted dollars (latest available). Comparative data are from IPEDS and US Census.

Percentage of undergraduate students from Massachusetts. Percentage of Fall 2008 undergraduate state-supported students from in-state as determined by tuition residency classification. Data for Massachusetts private universities are from Fall 2008 IPEDS.

Rate of growth in distance education enrollments. Percentage rate of growth in annual course registrations. Does not represent headcount enrollments. Academic Year represents Fall, Winter, Spring and Summer enrollments.

STUDENT SUCCESS AND SATISFACTION INDICATORS

Percentage of Undergraduate Students of Color. Fall 2009 undergraduates who are Black (including Cape Verdean), Hispanic/Latino, Asian and/or Native American, divided by total U.S. citizens and permanent residents who report race/ethnicity. Comparative data for 2009 public high school graduates are from the MA Department of Education.

Percentage Undergraduates who are International. Percentage of all undergraduates who are studying at the university on a student visa. International students include all eligible visa types as long as they are enrolled for a credit course; i.e., international students do not include U.S. citizens, U.S. permanent residents or refugees.

SERVICE TO THE COMMONWEALTH INDICATORS

Enrollment of Massachusetts residents. Number of first-year undergraduates enrolling at each institution who are residents of Massachusetts. Data for Massachusetts private universities are from Fall 2008 IPEDS and the universities' institutional research offices.

Enrollment by region. In-state undergraduate enrollment by region for Fall 2008. Data is from HEIRS and defined by DHE's DED/Non-DED Regions.

Degrees conferred by field. 2008-09 degrees conferred by UMass campuses by field. IPEDS 2008-09 Completions data.

UMass degrees as Percent of all Massachusetts degrees. Degrees awarded by UMass as % of total degrees awarded by colleges and universities in the state in 2008-09 based on IPEDS Completions Survey.

Percent of graduates who live in Massachusetts. Percentage of total undergraduate and graduate degree recipients who currently reside in Massachusetts based on alumni records as of Fall 2009.

MTEL Science & Math Test-Takers. Total number of students who took the Massachusetts Tests for Educator Licensure (MTEL) subject tests in science and math fields. Data compiled from the campuses' MTEL Annual Institution reports.

FINANCIAL HEALTH INDICATORS

Endowment assets. Market value of true and quasi-endowment assets. Comparative data are from IPEDS, financial statements and NACUBO survey.

Private Funds Raised Annually. Private funds raised includes restricted and unrestricted revenues from individuals, foundations, corporations and other organizations. Includes private grant revenues but not private contract revenues. Totals for each year include pledges made in that year as well as the value of in-kind contributions (exception: Lowell's equipment gifts in-kind were not included). Comparable peer data are not available.

Return on Net Assets. Increase/decrease in net assets divided by total net assets at beginning of the year. Peer data from published financial statements.

Financial Cushion. Unrestricted net assets as a percentage of operating expenditures and interest

expense. Peer data are from published financial statements. Not comparable to prior years.

Debt Service to Operations. Debt service payments as a percentage of operating expenditures and interest expense. Peer data from published financial statements. Not comparable to prior years.

Total Deferred Maintenance (DM) Cost & Deferred Maintenance Cost (DM) per Square Foot of Space. These new indicators better reflect the condition of campus facilities and are based on work being done with the facilities asset advisory firm *Sightlines* utilizing their *The Return on Physical Assets (ROPA sm)* methodology.

Total Deferred Maintenance (DM) Cost: Includes deferred and other maintenance dollars needed to maintain the current function of the campus. This is the amount needed to address the deferred maintenance backlog plus the code work that would be mandated to allow the campus to continue to use the space once the repairs were complete.

DM Cost per Square Foot: The total deferred maintenance cost per square foot of space. This ratio quantifies the average dollar level of deferred maintenance work needed per square foot of space.

PEER INSTITUTIONS FOR UMASS SYSTEM

Peer University Systems

University of Connecticut
University of California
University of Colorado
University of Illinois
University of Maryland
University of Missouri

New England Public Universities

University of Connecticut
University of Maine
University of New Hampshire
University of Rhode Island
University of Vermont

Massachusetts Private Universities

Boston College
Boston University
Brandeis University
Clark University
Harvard University
Massachusetts Institute of Technology
Northeastern University
Suffolk University
Tufts University

Please Note: Unless otherwise specified, all data are from the UMPO Office of Institutional Research.

HEADLINES FROM THE 2010 ANNUAL INDICATORS

ACADEMIC QUALITY

The Top American Research Universities (The Center) identifies nine performance indicators as measures of academic quality to evaluate the comparative performance of 160 *research* universities. These public and private institutions generate over \$40 million in federal research annually. Included in this group are ten public research universities with a Carnegie classification of very high research activity (RU/VH) with which the Amherst campus is comparing its progress on these and other indicators. All but two of the peers, the Universities of Connecticut and University of Delaware, are among the 63 members of the Association of American Universities (AAU), which are recognized for their excellence in research and education. Hence, the benchmark for the Amherst campus is quite high, and its performance is generally lower than its peers.

Student Academic Quality. The academic profile of entering students has improved in recent years, evidenced by growth in both high school GPA and SAT scores, which were at historical highs in Fall 2009. The high school GPA of entering students rose from 3.56 to 3.60 in one year, and 98% of students entered UMA with a high school GPA of 3.0 and above. SAT scores have increased by 25 points since 2005 but still fall below the median of the peer group. The campus is making progress in closing the gap. Further, seniors report high satisfaction with their undergraduate experience. Results from the National Survey of Student Engagement (NSSE) show that 87% of seniors evaluate their UMass Amherst educational experience positively.

Advanced Training. The campus has demonstrated strength in the education and training of pre- and post-doctoral researchers. Here, too, UMass Amherst is below the peer median for the number of degrees awarded. In recent years, the number of post-doctorates receiving training has increased, and the campus is above the peer median on this measure.

Research and Creative Activity. Total and federal research dollars in science and engineering (R&D) are key measures of an institution's commitment to and success in research. The Amherst campus faculty has been successful in competing for these dollars. Total R&D spending increased by 23%, and per faculty expenditures increased by 21% in the past five years. The campus ranks among the top 75 public research universities on R&D expenditures; however, it consistently performs below the peer median on total spending.

The number of academic honors and awards bestowed on its faculty is another indicator of an institution's quality. UMass Amherst's faculty has shown strength in this area. In particular, it consistently ranks at or above the peer median on faculty awards.

In recent years, the campus has made an investment in tenure-system faculty, but the size of the faculty is below 1,000 and considerably smaller than top public research universities. Growth in the tenure-system faculty will be required for the campus to make significant progress in improving academic quality and research productivity, and hence, advance in the research university rankings.

ACCESS AND AFFORDABILITY

Providing an affordable and accessible education of high quality is stated in the University's mission. In the 2009-10 academic year, the neediest students at UMA (22%) received aid in the form of Pell grants, and 90% of need was met for in-state students. In FY2010, the campus increased the need-based budget in the form of grant aid, and enhanced the financial aid package for the neediest in-state students. This was intended to ease the financial burden on families and continue to make a UMass Amherst education affordable.

STUDENT SUCCESS AND SATISFACTION

Most UMass Amherst students have a positive educational experience. Eighty-seven percent of students return for their sophomore year, and two-thirds graduate within six years. These rates have improved in recent years but remain somewhat below the peer median. The campus hopes to make progress in programs that will enrich the college experience and ultimately increase retention and graduation rates. Such initiatives include a First Year Experience program, expanded research and scholarship opportunities for undergraduates, and changes in the design and delivery of the General Education curriculum, including an integrative experience requirement for all upper division students beginning with the Fall 2010 entering class.

The campus has made progress in increasing the diversity of the campus. The Fall 2009 entering class was the most diverse group of students in recent history. Many will be the first in their families to complete the baccalaureate. The campus will continue to attract a diverse student body and to encourage greater appreciation for diverse populations on the campus.

SERVICE TO THE COMMONWEALTH

The Amherst campus has invested in programs to promote the enrollment and graduation of undergraduate and graduate students in the sciences and mathematics. In fall 2009, 27% of both baccalaureate students and master's and doctoral students were enrolled in STEM programs. These investments will continue.

FINANCIAL HEALTH

The fiscal goals of the campus are to develop reliable income streams to supplement state support of campus operations and to devote more of its unrestricted revenue to capital improvements. Funds will also be allocated to replenish faculty strength. Investment in capital improvements and restoration of faculty are necessary if the campus is to remain nationally competitive. Through these investments, the campus will enhance its academic mission and bolster its reputation

2010 ANNUAL INDICATORS AT A GLANCE

ACADEMIC QUALITY

• Average HS GPA of Freshmen	3.60
• SAT Scores of Freshmen	
<i>Median</i>	1169
25 th – 75th Percentile	1060 – 1280
• Average GPA of Entering Transfer Students	3.23
• Satisfaction With Major	87%
• No. of Doctorates Awarded	255
• No. of Postdoctoral Appointees	209
• Total R&D Expenditures	\$156.22M
• Federal R&D Expenditures	\$80.16M
• Total R&D/Faculty	\$156,687
• Patent Applications	27
• License Income	\$861,496
• New Tenured/Tenure-Track Faculty Hired	35
• Change in Tenured/Tenure-Track Faculty	-3
• Change in Faculty FTE	-12
• Faculty Awards	14
• National Academy Members	9

ACCESS AND AFFORDABILITY

• % Pell Grant Recipients	22%
• % of Need Met for In-State Students Awarded Need-Based Aid	90%
• % Undergraduates from Massachusetts	81%
• Online Course Enrollments	13,523
• Annual Growth in Online Course Enrollments	18%

STUDENT SUCCESS AND SATISFACTION

• % Undergraduates who are Students of Color	20.1%
--	-------

• % Undergraduates who are First Generation in College	24%
• % Undergraduates with English as a Second Language	8%
• % Undergraduates who are International	1.3%
• Number Undergraduates who Participated in a Study Abroad Program	1,031
• Freshman One-Year Retention Rate	87%
• Freshman Six-Year Graduation Rate	66%

SERVICE TO THE COMMONWEALTH

• Enrollment in STEM Programs	
<i>Undergraduate</i>	5,222 (27%)
<i>Graduate</i>	1,491 (27%)
• Degrees Awarded in STEM Fields	
<i>Undergraduate</i>	938 (21%)
<i>Graduate</i>	350(25%)
• MTEL Science and Math Test-Takers	27

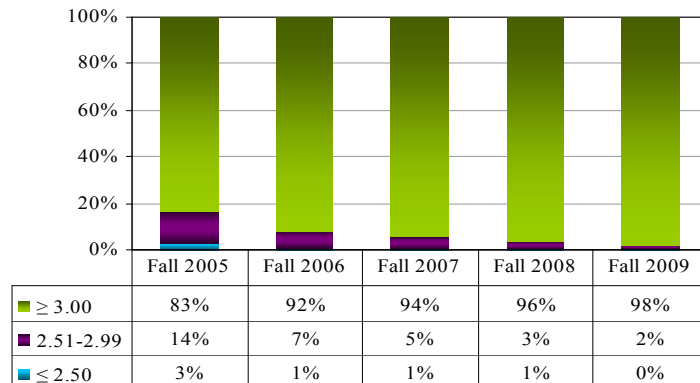
FINANCIAL HEALTH

• Endowment	\$159.62M
• Endowment Per Student	\$6,929
• Return on Net Assets	3.7%
• Financial Cushion	18.9%
• Debt Ratio	5.9%
• Deferred Maintenance per GSF	\$149

ACADEMIC QUALITY

High School GPA of Freshmen

UMass Amherst entering first-year students are strong academically with an average high school GPAs of 3.6. The Fall 2009 entering class was the strongest in the five year period with 98% of students earning a GPA of 3.0 and above in high school.



Mean GPA	2005	2006	2007	2008	2009
UMA	3.38	3.46	3.48	3.56	3.60

SAT Scores of Freshmen

First-year students entered UMA with a mean SAT of 1169. This is the second year that the SAT profile of UMass Amherst students showed double-digit gains. The campus's standing has improved at both the 25th and 75th percentile, but still remains in the lower half of the peer group.

SAT Score	2005	2006	2007	2008	2009
UMA					
25th %ile	1050	1050	1050	1050	1060
75th %ile	1240	1240	1230	1260	1280
Peer Median					
25th %ile	1080	1080	1060	1070	1060
75th %ile	1295	1300	1290	1295	1300
UMA Rank					
25th %ile	10	9	9	8	6
75th %ile	10	10	11	10	9

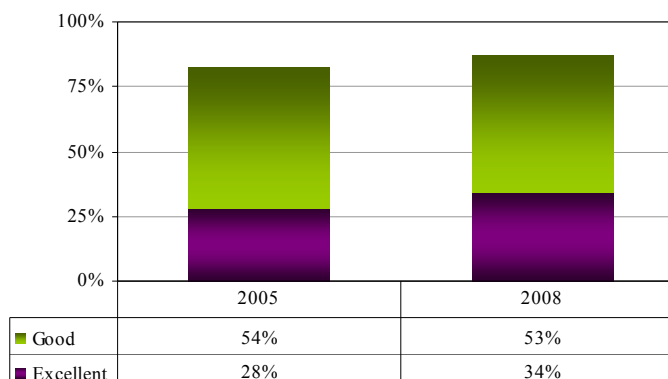
Average GPA of Entering Transfer Students

The transfer grade point average has reached a five-year high and consistently surpasses the mandated Department of Higher Education minimum of 2.00 for transfer students.

Average Transfer GPA	2005	2006	2007	2008	2009
UMA	3.13	3.18	3.14	3.16	3.23

Student Evaluation of Educational Experience

Seniors generally evaluate their UMA educational experience positively. In 2008, almost 90% of students rated their experience as good or excellent. The percentage of students who rated the experience as excellent gained six points between 2005 and 2008. Students will be surveyed again in spring 2011.



Number of Doctorates Awarded

The number of doctorates awarded at UMA dipped in 2009. In contrast, there has been a fairly steady rate of increase at peer institutions.

Doctorates	2005	2006	2007	2008	2009
UMA	267	253	293	291	255
Peer Median	280	325	329	335	347
Rank	7	9	9	8	10

Postdoctoral Appointees

UMass Amherst senior faculty mentor recent PhDs with science and engineering degrees who wish to receive advanced research training. The number of post-doctoral scholars in Fall 2007 was above the peer median, and has continued to grow. This is further evidence of strong research programs.

Post-Docs	2005	2006	2007	2008	2009
UMA	165	182	178	224	209
Peer Median	152	162	163	NA	NA
Rank	5	5	6	NA	NA

Research Expenditures

Total R&D spending in FY09 was about \$161 million, of which over \$156 million was in science and engineering (S&E). S&E expenditures have increased by 23% in total dollars and 20% in federal dollars since FY2005. Despite these gains, the relative position of UMA has changed only slightly and total S&E expenditures are about two-thirds of the median of the peer group.

Total S&E Research (\$000's)	2005	2006	2007	2008	2009
UMA	\$127,487	\$136,057	\$141,538	\$152,884	\$156,217
Peer Median	\$204,916	\$218,924	\$216,032	NA	NA
Rank	8	9	8	NA	NA

Federal S&E Research (\$000's)	2005	2006	2007	2008	2009
UMA	\$66,921	\$69,642	\$71,984	\$79,736	\$80,163
Peer Median	\$100,980	\$105,361	\$97,112	NA	NA
Rank	10	9	9	NA	NA

Total Research Expenditures per Tenure System Faculty

The total S&E dollars per faculty increased by 21% in that same period.

Per Tenure System Faculty FTE	2005	2006	2007	2008	2009
Total	\$129,692	\$137,570	\$141,397	\$152,123	\$156,687
Federal	\$68,078	\$70,417	\$71,912	\$79,339	\$80,404

Patent Applications

The number of patent applications filed per year has more than doubled since 2005. Currently, UMass Amherst files approximately one patent application for every \$5 million in sponsored research spending, which is on par with peer universities.

<i>Number Patent Applications</i>	2005	2006	2007	2008	2009
<i>UMA</i>	13	26	32	33	27

License Income

The licensing revenue for fiscal years 2005 and 2006 include large, one-time payments. In addition to license income, the campus again received over \$1 million in sponsored research support from its licensees in FY09.

<i>License Income</i>	2005	2006	2007	2008	2009
<i>UMA</i>	\$721,219	\$1,585,517	\$652,043	\$697,008	\$861,496

New Tenured/Tenure-Track Faculty Hired

The campus has made significant investments in tenure system faculty hires in recent years. Despite the economic downturn, there were 35 new hires in FY10. The campus will remain committed to supporting the strongest faculty possible.

	<i>AY</i> 2005-06	<i>AY</i> 2006-07	<i>AY</i> 2007-08	<i>AY</i> 2008-09	<i>AY</i> 2009-10
<i>UMA</i>	64	61	68	72	35

Change in Tenured/Tenure-Track Faculty

Fall 2009 saw a one-year loss of three in the tenure-system faculty, and an increase of 18 since Fall 2005. Investment in faculty is required to maintain the campus as a nationally competitive public research university and will continue to be a priority.

	<i>Fall 2005</i>	<i>Fall 2006</i>	<i>Fall 2007</i>	<i>Fall 2008</i>	<i>Fall 2009</i>
<i>UMA</i>	954	961	972	975	972

Change in Faculty FTE

Faculty full-time equivalent has grown by about 100 since Fall 2005, with 70% of the growth in the tenure system faculty. However, the number slipped in 2009.

	<i>Fall 2005</i>	<i>Fall 2006</i>	<i>Fall 2007</i>	<i>Fall 2008</i>	<i>Fall 2009</i>
<i>UMA</i>	1,157	1,231	1,255	1,266	1,254

Faculty Awards

UMass Amherst faculty members are recipients of many prominent awards in the arts, humanities, science, engineering and health fields. In recent years, the campus has performed at or above the median of its peers on this measure, and was in the top third of the peer group in 2008.

<i>Awards</i>	2004	2005	2006	2007	2008
<i>UMA</i>	10	13	19	11	14
<i>Peer Median</i>	11	15	12	11	10
<i>Rank</i>	6	7	1	6	3

National Academy Members

Several UMass faculty members have been elected to some of the most prestigious disciplinary organizations: the National Academy of Science, the National Academy of Engineering, or the Institute of Medicine. These are some of the highest honors academic faculty can receive. The campus ranks somewhat below its peers on this measure. The absence of a medical school limits the ability of UMA faculty to be elected to the IOM.

<i>Members</i>	2004	2005	2006	2007	2008
<i>UMA</i>	7	9	7	9	9
<i>Peer Median</i>	13	12	11	11	10
<i>Rank</i>	9	7	8	7	7

ACCESS AND AFFORDABILITY

Percent Pell Grant Recipients

Over one fifth of UMA undergraduate students receive support in the form of Pell grants. This number has remained steady and is quite favorable.

	<i>Fall 2005</i>	<i>Fall 2006</i>	<i>Fall 2007</i>	<i>Fall 2008</i>	<i>Fall 2009</i>
<i>UMA</i>	23%	22%	23%	23%	22%

Percent of Need Met for In-State Students Awarded Need-Based Aid

The campus has enhanced the financial aid packages of the neediest in-state students for 2009-10 which helped to increase the percent of need met. The number of in-state students receiving need-based grant aid increased as well. The campus strives to provide a quality and affordable education to its students.

<i>Percent Need Met</i>	<i>Fall 2008</i>	<i>Fall 2009</i>
<i>UMA</i>	88%	90%

Percent Undergraduates from Massachusetts

The campus is committed to maintaining access to a quality education for residents of the Commonwealth. Over four-fifths of UMass Amherst students enrolled in state-supported programs are residents of the state.

<i>Percent UG's from MA</i>	<i>Fall 2006</i>	<i>Fall 2007</i>	<i>Fall 2008</i>	<i>Fall 2009</i>
<i>UMA</i>	80.1%	79.7%	80.1%	81.2%

Online Course Enrollments

The Amherst campus offers five undergraduate and graduate degree programs and five certificate programs that can be completed partially or fully online. In addition, a variety of other courses are offered. Online course enrollments have grown about 20% annually.

<i>Online Course Enrollments</i>	<i>Fall 2007</i>	<i>Fall 2008</i>	<i>Fall 2009</i>
<i>UMA</i>	9,175	11,142	13,523

Annual Growth in Online Course Enrollments

There has been considerable growth in online course enrollment on the Amherst campus in recent years. Online programs afford students flexibility in course-taking.

<i>Annual Growth Online</i>	<i>Fall 2007</i>	<i>Fall 2008</i>	<i>Fall 2009</i>
<i>UMA</i>	NA	18%	18%

STUDENT SUCCESS AND SATISFACTION

Percent Undergraduates who are Students of Color

The Amherst campus is committed to enrolling a diverse student body. This is evidenced by the growth in the proportion of undergraduates who are students of color. The Fall 2009 entering class was the most diverse group of students in recent history.

<i>Students of Color (UG's)</i>	<i>Fall 2006</i>	<i>Fall 2007</i>	<i>Fall 2008</i>	<i>Fall 2009</i>
<i>Percent</i>	17.5%	18.4%	19.4%	20.1%

Percent Undergraduates who are First Generation in College

Although most students who enter UMass Amherst have parents who are college-educated, many students who enroll will be the first in their family to earn the baccalaureate.

<i>First Generation College-Going (UG's)</i>	<i>Fall 2008</i>	<i>Fall 2009</i>
<i>Number</i>	1,072	995
<i>Percent</i>	26%	24%

Percent Undergraduates with English as a Second Language

English is not the first language of about 8% of first-year students entering UMass. This is another indicator of the diversity of the campus.

<i>English as a Second Language (UG's)</i>	<i>Fall 2008</i>	<i>Fall 2009</i>
<i>Number</i>	371	347
<i>Percent</i>	9%	8%

Percent Undergraduate Students who are International

The Amherst campus attracts a small number of undergraduate international students, many of whom are studying on the campus as part of an international exchange program. In contrast, 22% of graduate students are international. The campus is exploring ways to increase the number undergraduates who are international.

<i>International Undergraduate</i>		<i>Fall 2006</i>	<i>Fall 2007</i>	<i>Fall 2008</i>	<i>Fall 2009</i>
<i>Number</i>		266	231	251	262
<i>Percent</i>		2%	1%	1%	1%

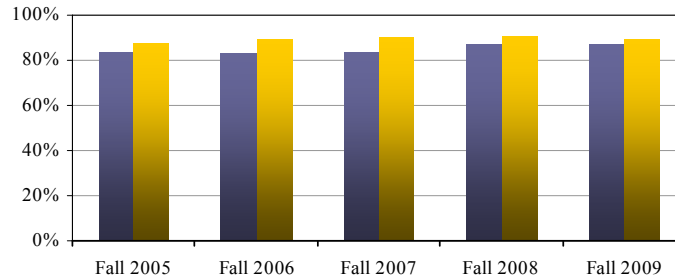
Number Undergraduates who Participated in a Study Abroad Program

Over 1,000 UMass undergraduates participated in a study abroad experience during the 2008-09 academic year. The campus encourages students to take advantage of these enriching global learning opportunities.

<i>Study Abroad (UG's)</i>	<i>2006-07</i>	<i>2007-08</i>	<i>2008-09</i>
<i>Number</i>	1,008	1,015	1,031

Freshman One-Year Retention Rate

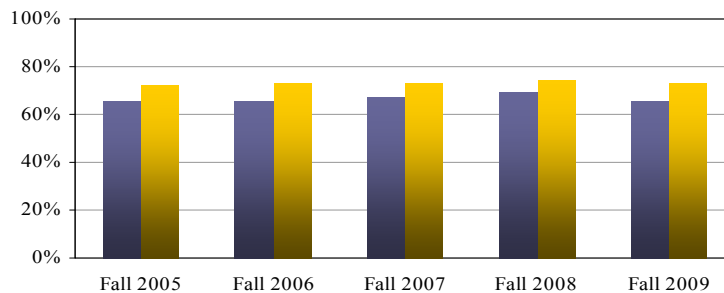
There has been a 3-point gain in the one-year retention rate since Fall 2005. However, the one-year rate remains below the peer median. Improving the first-year experience and hence student retention is a campus priority, and new strategies are being developed and implemented.



	Fall 2005	Fall 2006	Fall 2007	Fall 2008	Fall 2009
UMA	84%	83%	84%	87%	87%
Peer Median	88%	89%	90%	91%	89%
Rank	9	11	9	8	8

Freshman Six-Year Graduation Rate

About two-thirds of full-time Amherst campus students graduate within six years of entrance. The 2009 rate is below the peer median, however improvements in the one-year retention rates in recent years will likely translate to higher graduation rates in the future.



	Fall 2005	Fall 2006	Fall 2007	Fall 2008	Fall 2009
UMA	66%	66%	67%	69%	66%
Peer Median	72%	73%	73%	74%	73%
Rank	8	7	7	7	10

SERVICE TO THE COMMONWEALTH

Enrollment in STEM Programs

There are several initiatives on the Amherst campus to promote the enrollment and graduation of students in science, technology, engineering and mathematics (STEM) fields. An added goal is to increase the enrollment and persistence of underrepresented minorities in STEM. There has been an upward trend in the number and percent of undergraduates in STEM programs. Presently, 27% of undergraduate and graduate students are enrolled in such programs.

Undergraduate

	UMA	Fall 2005	Fall 2006	Fall 2007	Fall 2008	Fall 2009
Total		18,068	18,495	18,769	19,016	19,311
STEM		3,961	4,157	4,455	4,845	5,222
Percent STEM		22%	22%	24%	25%	27%

Graduate

	UMA	Fall 2005	Fall 2006	Fall 2007	Fall 2008	Fall 2009
Total		4,840	4,998	5,018	5,105	5,505
STEM		1,474	1,453	1,413	1,393	1,491
Percent STEM		30%	29%	28%	27%	27%

Degrees Awarded in STEM Fields

Approximately one fifth of undergraduates and one-fourth of graduate students are awarded degrees in STEM fields.

Undergraduate

UMA	2004-05	2005-06	2006-07	2007-08	2008-09
<i>Total Degrees</i>	4,262	4,038	4,235	4,431	4,573
<i>STEM</i>	952	953	919	911	938
<i>Percent STEM</i>	22%	24%	22%	21%	21%

Graduate

UMA	2004-05	2005-06	2006-07	2007-08	2008-09
<i>Total Degrees</i>	1,411	1,402	1,448	1,506	1,378
<i>STEM</i>	393	369	419	427	350
<i>% STEM</i>	28%	26%	29%	28%	25%

FINANCIAL HEALTH

Endowment Assets and Annual Growth in Endowment

The campus endowment is one of the lowest in the country for a public flagship campus. There was a sharp decline in the annual growth in the total endowment due to instability in the financial markets. The campus is ramping up its fundraising staff, and steady growth is projected in endowment earnings.

<i>Endowment (\$000's)</i>	<i>FY 2005</i>	<i>FY 2006</i>	<i>FY 2007</i>	<i>FY 2008</i>	<i>FY 2009</i>
<i>UMA</i>	\$91,193	\$113,724	\$136,954	\$168,241	\$159,620
<i>Annual % change</i>	11%	25%	20%	23%	-5%

Endowment per Student

The campus endowment is one of the lowest in the country for a public flagship campus. There was a sharp decline in FY09 in the annual growth in the total endowment due to instability in the financial markets. The campus is ramping up its fundraising staff, and steady growth is projected in endowment earnings.

<i>Endowment per FTE</i>	<i>FY 2005</i>	<i>FY 2006</i>	<i>FY 2007</i>	<i>FY 2008</i>	<i>FY 2009</i>
<i>UMA</i>	\$4,232	\$5,256	\$6,101	\$7,426	\$6,929
<i>Peers</i>	\$18,529	\$19,769	\$21,304	\$14,915	\$11,137

Return on Net Assets

Return on net assets for the campus is above the peer average. The ratio will remain solid through FY13 as a result of an infusion of \$175 million of state funding for capital projects over the next five years.

	<i>FY 2005</i>	<i>FY 2006</i>	<i>FY 2007</i>	<i>FY 2008</i>	<i>FY 2009</i>
<i>UMA</i>	5.42%	8.4%	17.2%	8.0%	3.7%
<i>Peers</i>	-	3.0%	7.8%	5.3%	2.1%

Financial Cushion

Financial cushion represents an institution's capacity to sustain itself during difficult financial times. Although lower than its peers, the ratio for the Amherst campus still compares favorably. The financial cushion will decline over the next several years as accumulated unrestricted funds, which have been designated for capital improvements are spent on these projects.

	<i>FY 2005</i>	<i>FY 2006</i>	<i>FY 2007</i>	<i>FY 2008</i>	<i>FY 2009</i>
<i>UMA</i>	15.2%	16.7%	18.2%	19.3%	18.9%
<i>Peers</i>	22.4%	22.5%	25.6%	26.8%	25.3%

Debt Service to Operations

The debt service ratio for the campus is slightly below its peers. It will escalate to 8% over the next five years as the campus invests in infrastructure improvements including renovation of science classrooms and laboratories.

	<i>FY 2005</i>	<i>FY 2006</i>	<i>FY 2007</i>	<i>FY 2008</i>	<i>FY 2009</i>
<i>UMA</i>	3.7%	4.6%	4.2%	4.7%	5.9%
<i>Peers</i>	5.9%	4.9%	5.3%	4.8%	6.6%

Deferred Maintenance per GSF

This ratio tracks the progress the campus anticipates making in reducing its deferred maintenance backlog over the next few years. It is based on currently identified projects in the capital plan with \$200 million of spending included in the five year projection for infrastructure improvements.

	<i>FY 2008</i>	<i>FY 2009 (est.)</i>	<i>FY 2010 (est.)</i>
<i>UMA</i>	\$165	\$159	\$149

DEFINITIONS AND SOURCES

ACADEMIC QUALITY INDICATORS

High School GPA of Freshmen. Cumulative GPA for college prep courses with additional weight to honor and AP courses, according to BHE admissions policy, reported on all first-year students.

SAT Scores of freshmen. 25th & 75th percentiles of all first-year students. Peer data are from US News.

Average GPA of entering transfer students. Cumulative GPA for college-level courses transferred to UMA according to admissions policy.

Student Evaluation of Educational Experience. Percent of seniors who responded “good” or “excellent” to the question, “How would you evaluate your entire educational experience at this institution?” on the National Survey of Student Engagement administered in Spring 2008.

Number of Doctorates Awarded. Number of Doctorates awarded for the academic year 2009 which includes September 2008, January 2009, and May 2009 award dates.

Postdoctoral Appointees. The number of postdoctoral appointees as reported to NSF.

Research Expenditures. R&D expenditures in all academic fields from all sources (federal, state, local governments, industry, private and institutional) as reported to NSF. Peer data reported in The Top American Research Universities.

Total Research Expenditures per Tenure System Faculty. R&D expenditures in all academic fields from all sources (federal, state, local governments, industry, private and institutional) as reported to NSF, divided by total tenure system faculty as reported to IPEDS. Peer data reported in The Top American Research Universities.

Patent Applications. Number of U.S. Patent applications filed per year. Data Source: Data reported by campuses to UMass President’s Office, Office of CVIP.

License Income. Amount of annual income from license agreements. Data Source: Data reported by campuses to UMass President’s Office, Office of CVIP.

New Tenured/Tenure-track Faculty. The number of new tenured/tenured-track faculty members hired to start their new positions in the academic year.

Change in Tenured/Tenure-track Faculty. The difference in the number of tenured/tenure-track faculty from one fall semester to the next. Includes faculty members who are on paid leave. Does not include

individuals whose primary responsibility is administrative. For the 2010 PMS report, the difference will be between the figure for Fall 2009 and Fall 2008.

Change in Faculty FTE. The difference in the total FTE, from one fall semester to the next, for all full-time and part-time instructional faculty teaching state-supported courses. Includes faculty members who are on paid leave. Does not include individuals whose primary responsibility is administrative. For the 2010 PMS report, the difference will be between the figure for Fall 2009 and Fall 2008. Definition of Faculty FTE is per the Common Data Set, and includes all faculty teaching credit courses, including credit courses offered via Continuing Education

Faculty Awards. Number of faculty with awards from a list of 24 prominent grant and fellowship programs in the arts, humanities, science, engineering and health fields (e.g., Fulbright American Scholars, Guggenheim Fellows, MacArthur Foundation Fellow, National Endowment for the Humanities Fellows, NSF Career Awards, Sloan Research Fellows). Data reported in The Top American Research Universities and were obtained from directories or web based listings.

National Academy Members. Number of faculty with active or emeritus status who have been elected to membership in the National Academy of Sciences, the National Academy of Engineering, or the Institute of Medicine. Data reported in The Top American Research Universities.

ACCESS AND AFFORDABILITY INDICATORS

Percent Pell Grant Recipients. Federal Pell Grants are awarded to low-income undergraduates based on their expected family contribution. Data as reported by campuses to the UMass President’s Office in the Financial Aid Template.

Percent of Need Met for In-State Students Awarded Need-based Aid. The average percentage of demonstrated financial need that is met by the institution’s award of need-based financial aid to undergraduate students. Data as reported by to the Common Data Set and to the UMass President’s Office in the Financial Aid Template.

Percentage Undergraduate from Massachusetts. Percentage of total undergraduate students who currently reside in Massachusetts based on tuition residency and/or permanent address for continuing education students.

Online Course Registrations. Enrollments or course registrations for the academic year for online credit courses.

Academic year includes summer, fall, intersession, and spring. These do not include hybrid course, but fully online only offered via UMOL.

Annual Growth in Online Course Registrations.

Percentage rate of growth in Enrollments or course registrations for the fiscal year for online credit courses. Fiscal year includes summer, fall, intersession, and spring. These do not include hybrid courses, but fully online only offered via UMOL

STUDENT SUCCESS AND SATISFACTION INDICATORS

Percent Undergraduate who are Students of Color.

Undergraduates who are African American/Black, Cape Verdean, Hispanic/Latino, Asian and/or Native American, divided by total U.S. citizens and permanent residents who report race/ethnicity.

Percent Undergraduates who are First Generation in College.

First-generation college students are defined as those students with neither parent having attended college. Data are from Cooperative Institutional Research Program (CIRP) Freshmen Survey 2009.

Percent Undergraduates with English as a Second Language.

Percentage of undergraduates whose first language was not English. Data are from Cooperative Institutional Research Program (CIRP) Freshmen Survey 2009.

Percent Students who are International. Percentage of all undergraduates who are studying at the university on a student visa. International students include all eligible visa types as long as they are enrolled for a credit course; i.e., international students do not include U.S. citizens, U.S. permanent residents or refugees.

Number Undergraduates who Participated in a Study Abroad Program. Data are numbers of students who participated in a credit bearing study abroad program as reported on the Institute of International Education Open Doors survey for Fall 2008 through Summer 2009.

Freshmen One-Year Retention Rate. Percent of first-time, full-time freshmen who entered in previous fall and were still enrolled as of the next fall. Peer data as reported to IPEDS.

Freshmen Six-Year Graduation Rate. Percent of first-time, full-time freshmen who entered in a given fall and had graduated within six years. Peer data as reported to IPEDS.

SERVICE TO THE COMMONWEALTH INDICATORS

Enrollment in Science, Technology, Engineering, and Mathematics (STEM) Programs. Total number of students

enrolled in STEM programs. STEM programs are those fields of study defined in the National Science & Mathematics Access to Retain Talent (SMART) Grant with the exclusion of foreign languages. Enrollment count includes undergraduate, graduate and certificate students.

Degrees Awarded in STEM Fields. Number of undergraduate and graduate degrees and certificates awarded in STEM fields. STEM fields are those defined in the National Science & Mathematics Access to Retain Talent (SMART) Grant with the exclusion of foreign languages.

FINANCIAL HEALTH INDICATORS

Endowment Assets and Annual Growth in Endowment. Annual growth in total UMass Amherst endowment balance.

Endowment per Student. Total UMass Amherst endowments per annualized FTE student, where FTE of peer institutions is standardized to UMass formula.

Return on Net Assets. Increase/decrease in net assets divided by total net assets at beginning of the year. Peer data from published financial statements.

Financial Cushion. Unrestricted net assets as a percentage of total operating expenditures. Peer data are from published financial statements.

Debt Service to Operations. Debt service as a percentage of total operating expenditures. Peer data are from published financial statements.

Deferred Maintenance per GSF. Deferred Maintenance per Gross Square Footage includes deferred and other maintenance dollars needed to maintain the current function of the campus, calculated by the "Sightlines" Return on Physical Assets methodology (ROPA sm) and shown per square foot of space.

PEER INSTITUTIONS FOR UMASS AMHERST

Indiana University-Bloomington

*Iowa State University

*Rutgers University-New Brunswick

Stony Brook University

*University of California-Santa Barbara

*University of Colorado-Boulder

*University of Connecticut-Storrs

University of Delaware

*University of Maryland-College Park

University of Nebraska-Lincoln

*Financial Peer

Please Note: Unless otherwise specified, all data are from the Campus Office of Institutional Research.