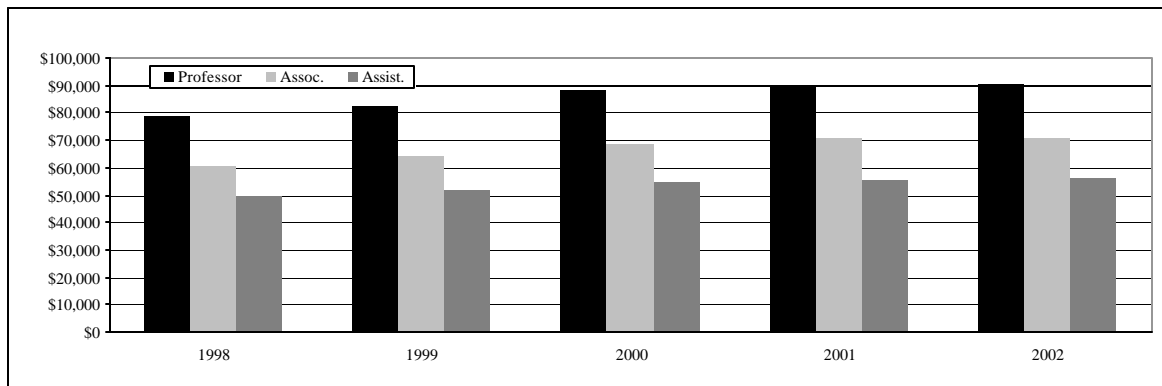


Faculty and Staff

Number and Average Salary of Full-Time Instructional Faculty by Academic Rank Fall 1983 - Fall 2002

Fall	Professor		Associate Professor		Assistant Professor		Instructor		Lecturer		All Ranks	
	Number	Average Salary	Number	Average Salary	Number	Average Salary	Number	Average Salary	Number	Average Salary	Number	Average Salary
1983	598	\$39,320	368	\$31,307	181	\$25,557	18	\$21,894	49	\$20,026	1,214	\$33,802
1984	632	45,742	352	36,037	190	29,046	18	24,882	55	23,441	1,247	39,174
1985	640	48,531	357	38,866	209	30,658	14	28,458	56	24,927	1,276	41,643
1986	629	52,555	353	41,269	233	32,237	9	28,742	57	26,763	1,281	44,434
1987	645	56,268	348	43,915	247	34,273	4	33,173	59	28,793	1,303	47,484
1988	662	60,904	325	47,301	247	36,708	4	36,625	54	31,656	1,292	51,559
1989	651	62,506	325	48,628	233	37,467	5	31,662	57	31,893	1,271	52,873
1990	634	62,425	317	48,108	214	37,673	4	32,950	59	30,924	1,228	52,806
1991	648	62,065	303	47,165	178	37,612	1	‡	48	33,066	1,178	53,336
1992	638	62,324	311	46,517	139	38,109	3	31,855	61	31,537	1,152	53,425
1993	651	70,396	305	53,747	146	43,782	7	38,607	63	35,458	1,172	60,680
1994	641	70,727	310	53,416	148	43,880	9	43,801	66	34,796	1,174	60,545
1995	621	70,468	295	53,162	159	43,281	7	44,638	64	38,088	1,146	60,275
1996	629	75,258	298	57,090	153	45,899	4	47,367	80	39,511	1,164	64,195
1997	619	79,326	280	60,519	167	49,532	2	44,780	86	41,144	1,154	67,546
1998	604	78,474	261	60,644	178	49,874	4	43,397	93	42,814	1,140	66,894
1999	601	82,504	279	63,872	175	51,749	3	42,433	103	44,350	1,161	69,902
2000	595	88,412	282	68,704	172	54,409	3	50,543	103	48,365	1,155	74,867
2001	578	90,044	275	70,510	183	55,723	3	48,763	113	48,332	1,152	75,730
2002	497	90,723	257	70,717	178	55,896	1	‡	130	47,654	1,063	74,742

Average Salary of Full-Time Instructional Faculty
by Academic Rank
Fall 1998-Fall 2002



‡Salaries are not presented in cells with only one entry but are included in the totals.

Note A. **Instructional Faculty:** Faculty whose primary responsibility is instruction; includes department heads and faculty who are on sabbatical or have release time for research; excludes faculty on leave without pay

Note B. Twelve-month (calendar year) salaries were scaled to a nine-month (academic year) basis using a conversion factor of .818

Note C. Faculty salaries for 1998 exclude contracted raises (cost-of-living and merit) that were awarded retroactively

Note D. Faculty Salaries for 1999 include 1998 cost-of-living and merit, as well as partial merit increases for 1999. This causes annual increases to appear larger than they really are.

Note E. Faculty Salaries for 2001 include a FY01 2.8% cost-of-living increase.

Source: OIR faculty census file, October.