

California SAT-9 Testing Results
Statewide Percentile Ranking
Class Comparison
Grade2-LEP and Non-LEP Results

These first two graphs show the growth in LEP and Non-LEP student scores on the SAT-9 test in reading, language and math. The numbers at the top of each bar graph indicate the average percentile score. The dark line shows the 50th percentile. These are all grade two results.

The claim has been made that LEP students have shown a dramatic increase from 1998 through 2001. The graph seems to bear this out. The difference between the LEP and Non-LEP percentile is most notable.

Compiled by Peg Wallace

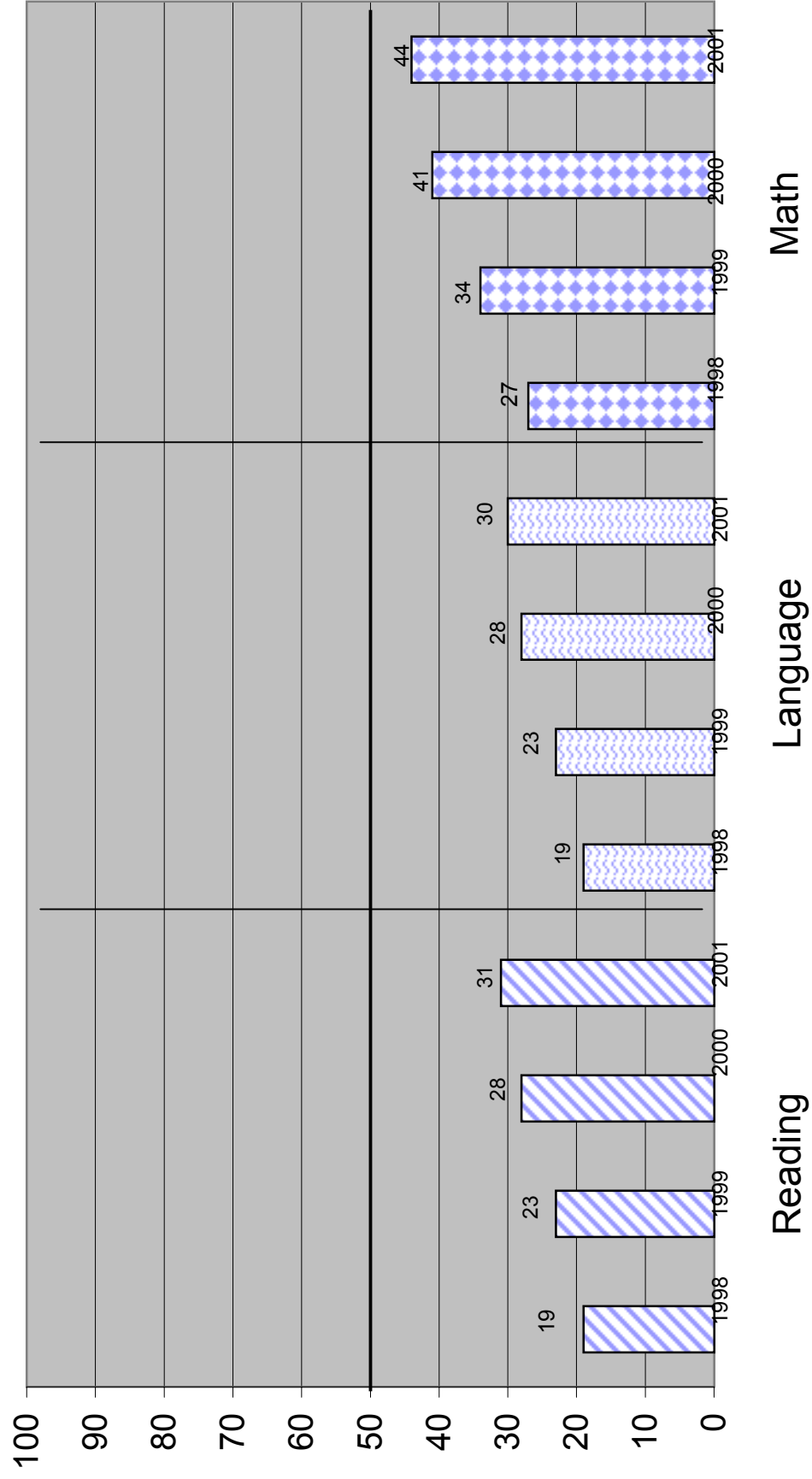
Grade 2 LEP

Reading		Language			Math		
1998	1999	2000	2001	1998	1999	2000	2001
19	23	28	31	19	23	28	30
				1998	1999	2000	2001
				27	34	41	44

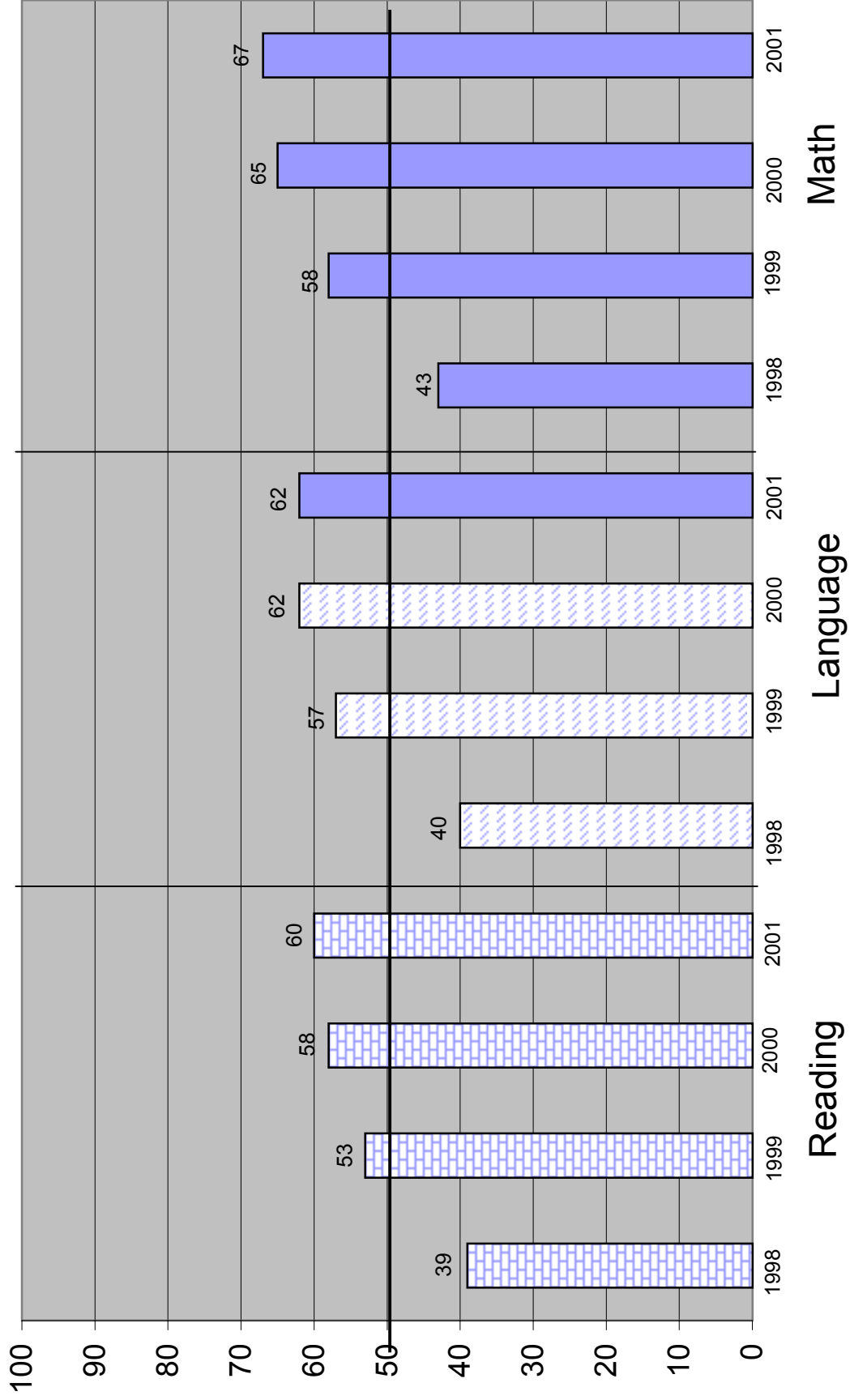
Grade 2 Non-LEP

Reading		Language			Math		
1998	1999	2000	2001	1998	1999	2000	2001
39	53	58	60	40	57	62	62
				1998	1999	2000	2001
				43	58	65	67

California SAT-9 Testing Results
Statewide Percentile Ranking
Class Comparison
Grade 2 - LEP



**California SAT-9 Testing Results
Statewide Percentile Ranking
Class Comparison
Grade 2 Not-LEP**



**California SAT-9 Testing Results
Statewide Percentile Ranking
Class Comparison
Class of 2008, 2009, 2010
Reading, Language and Math**

The following graphs track each Grade Two class as it progresses through the years. One can see that the growth of non-LEP students is progressive. However one can note that the LEP students do not progress at the same rate if at all. Stagnant reading scores are particularly troubling, because as the students progress through the years, all subject matter becomes more dependent on reading ability.

By removing native language support at the early grade levels we seem to be preventing growth for our students.

For more information on the California SAT-9 testing results the web site is www.ed-data.k12.ca.us/star

Compiled by Peg Wallace

Class of 2008

Grade 2	Grade 3	Grade 4	Grade 5
1998	1999	2000	2001
All LEP	Not LEP	Not LEP	Not LEP
19	18	20	18
51	56	55	55
199	18	20	18

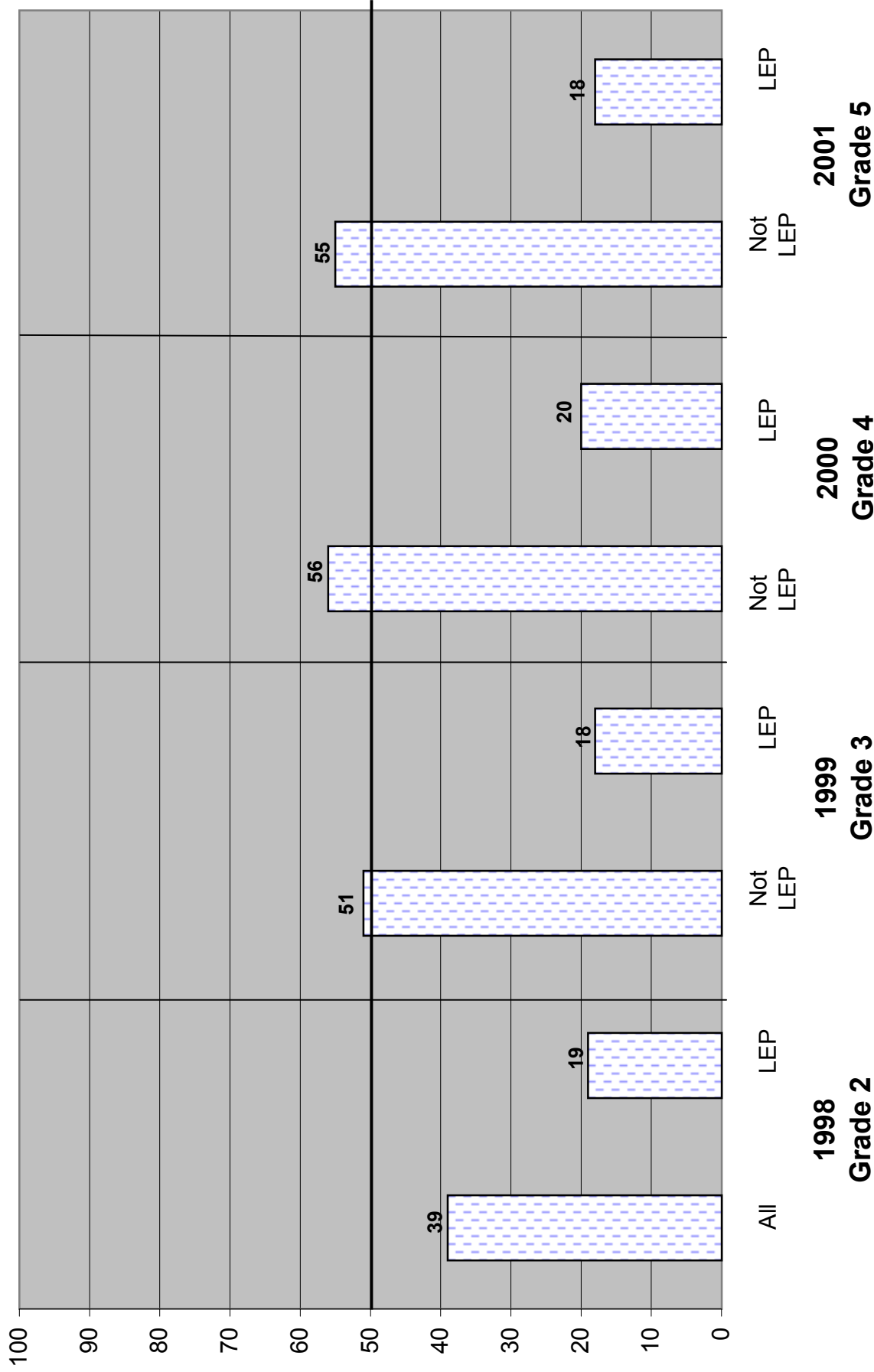
Class of 2009

Grade 2	Grade 3	Grade 4
1999	2000	2001
All LEP	Not LEP	Not LEP
23	21	21
55	59	21

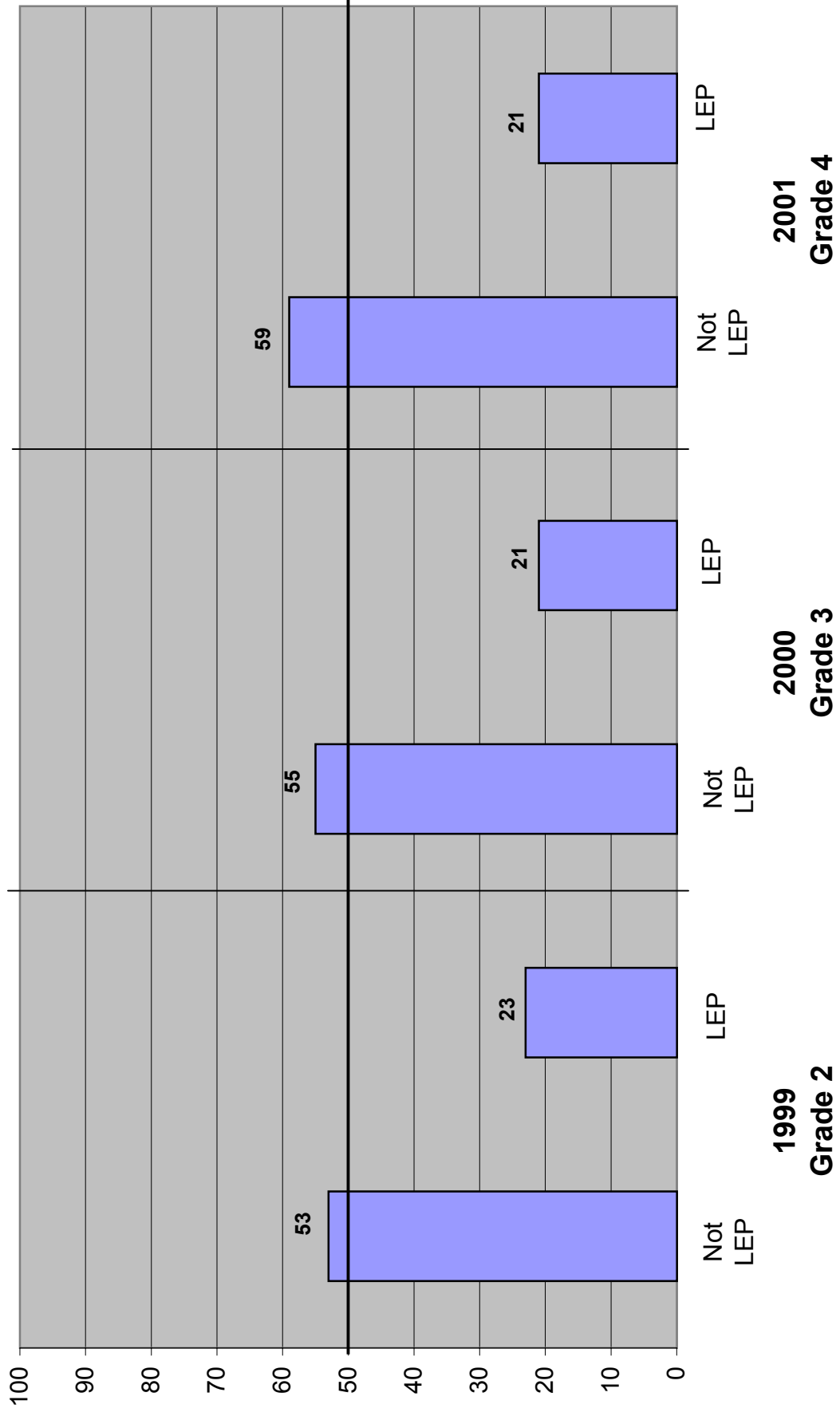
Class of 2010

Grade 2	Grade 3
2000	2001
Not LEP	Not LEP
58	23
28	57

California SAT-9 Testing Results
Statewide 1998-2001
National Percentile Ranking
Class of 2008
Reading - National Percentile Ranking



**California SAT-9 Testing Results
Statewide 1998-2001
National Percentile Ranking
Class of 2009
Reading - National Percentile Ranking**



California SAT-9 Testing Results
Statewide 1998-2001
National Percentile Ranking
Class of 2010
Reading - National Percentile Ranking

