

PeopleSoft Finance 8.9 Browser Setup

Supported browsers:

Windows: IE6, IE7, Firefox 2, Netscape 7.01 and 7.02

Mac: Firefox 2, Netscape 7.01 & 7.02

Trusted Sites:

Add sites *.umassadmin.net and <https://pimsearch.perfect.com> to trusted internet sites.

In Internet Explorer:

1. Open the **Tools** menu.
2. Select **Internet Options**.
3. Click **Security** tab.
4. Select **Trusted Sites** icon.
5. Click **Sites** button.
6. Type *.umassadmin.net in the field "Add this Web site to the Zone".
7. Click **Add**.
8. Type <https://pimsearch.perfect.com> in the field "Add this Web site to the Zone".
9. Click **Add**.
10. Click **OK**.
11. Click **OK** again and then restart Internet Explorer.

Set the Trusted sites security level to the default level of Low.

First make sure you only have sites that you trust in the previous step.

1. Open the **Tools** menu.
2. Select **Internet Options**.
3. Click **Security** tab.
4. Select **Trusted Sites** icon.
5. Select **Default Level** button.
6. Select **Low**.
7. Click **Apply**.
8. Click **OK**.
9. Restart Internet Explorer.

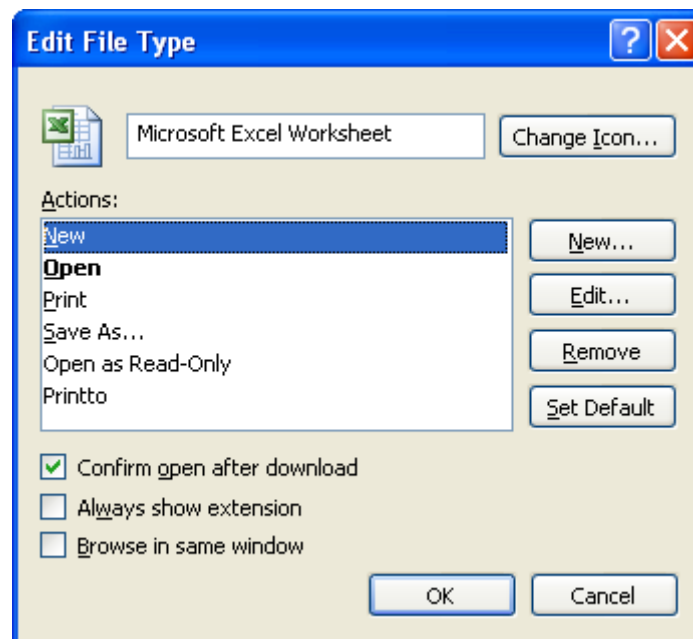
Popup Blocker Configuration:

Configure popup blockers to allow popups from: *.umassadmin.net

To download Excel reports (nVision) from the web in Windows, configure Windows to open Excel spreadsheets in Excel instead of the browser:

As a user with local administrator privileges:

1. Open **My Computer**.
2. On the **Tools** menu (or the View menu), click **Folder Options** (or click **Options**).
3. Click the **File Types** tab.
4. In the Registered file types list, click **XLS – Microsoft Excel Worksheet** and then click **Advanced** (or click **Edit**).
5. In the **Edit File Type** dialog box, clear the **Browse in same window** check box (or clear the **Open Web documents in place** check box).



6. Click **OK**.
7. Restart browser

To Drill down on nVision reports:

In order to drill down on Excel reports, the add-in: DrillToPIA.xla needs to be installed on the client machine. This file can be downloaded from <http://www.umass.edu/af/systems/DrillToPIA.XLA>.

To load the add-in:

1. Place the file DrillToPIA.xla into the Excel add-in directory

If Microsoft Office is installed in %MS_OFFICE%, then the Excel add-ins directory is %MS_OFFICE%\Office\Library.

2. Launch Excel, select Tools, Add-ins, and then select DrillToPIA in the Add-ins dialog box.

Users will see a new menu option when they open Excel from now on:

